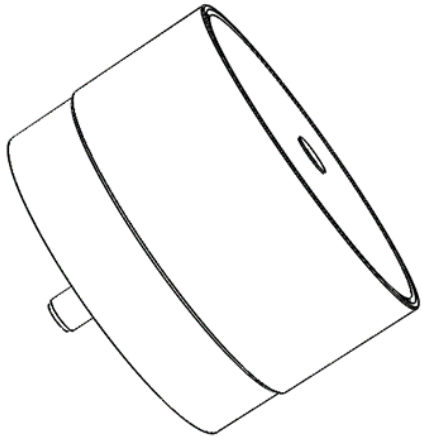


**QMS-00991**

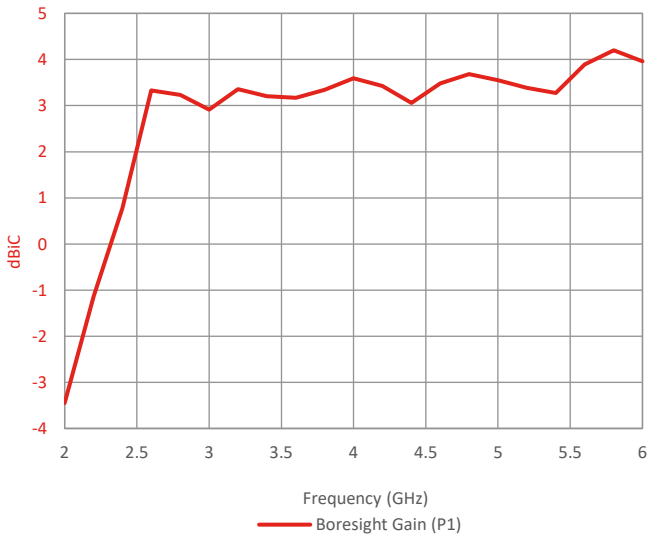


Please contact Steatite Antennas for a full interface control drawing.

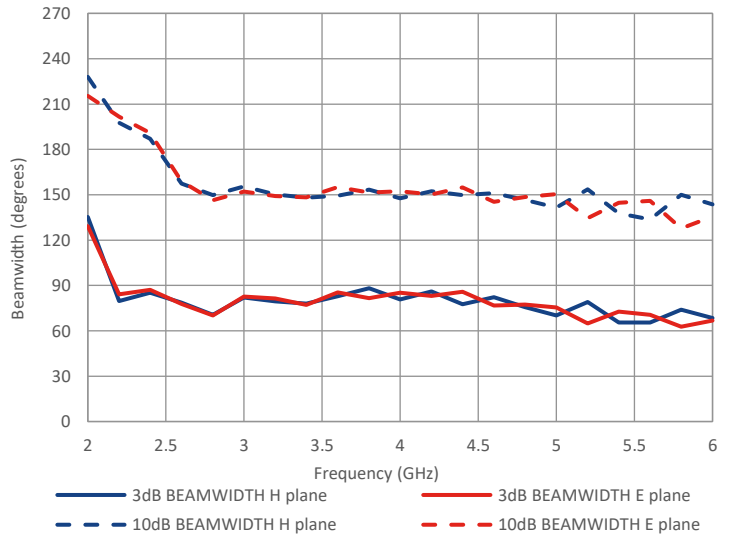
**Typical Specification**

<b>Frequency</b>	2 to 6 GHz
<b>Connector</b>	SMA Female
<b>VSWR</b>	Typically <2:1
<b>Gain</b>	-3.4 to 4.2 dBi
<b>Axial Ratio</b>	0.2 to 5.1 dB
<b>3 dB Beamwidth</b>	62.7 to 135.3 degrees
<b>10 dB Beamwidth</b>	127.7 to 228 degrees
<b>Power</b>	2W CW
<b>Size &amp; Weight</b>	Ø60mm x 49.5mm (D x H), 154g nominal
<b>Mounting</b>	3 x M3 holes (rear mounted) on a Ø38.1 PCD
<b>Environmental</b>	MIL-STD-810H Storage Temperature (-40°C to +55°C), Humidity (60°C, 98% RH) & Shock (on road) DEF-STAN 00-35 Vibration (0.02 gn <sup>2</sup> /Hz from 20 to 50 Hz reducing at 3dB/octave to 500 Hz)

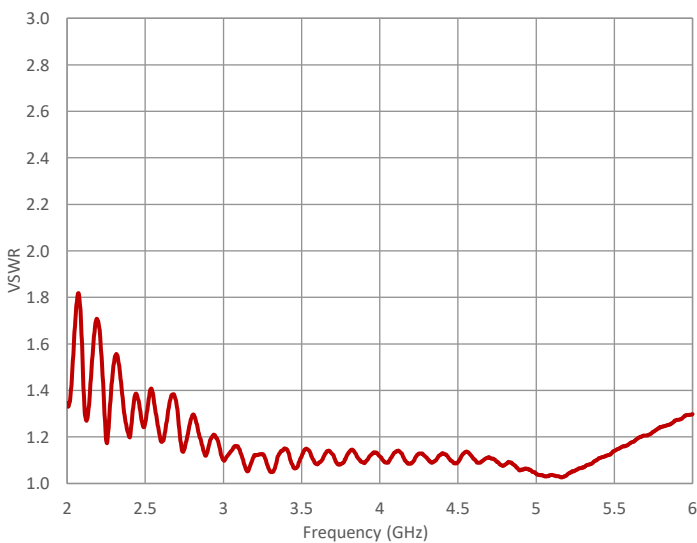
**Typical Gain**



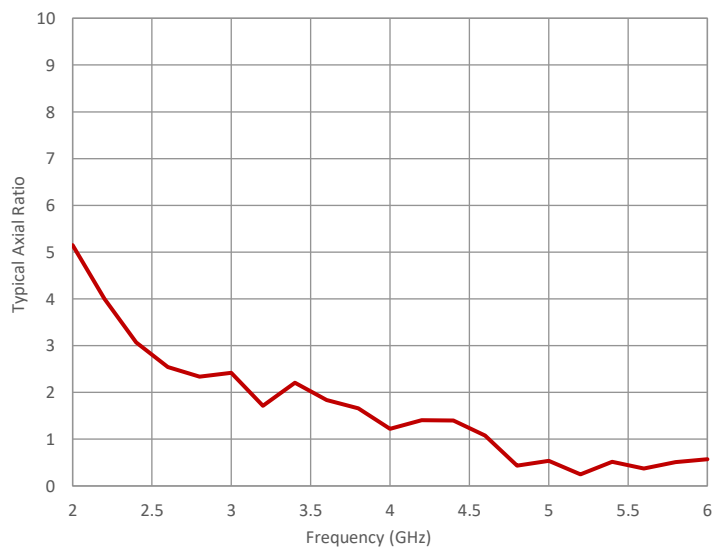
**Typical Beamwidth**



**Typical VSWR**



**Typical Axial Ratio**



Steatite Antennas reserve the right to change and/or update this specification whereby it is deemed that this would improve either the production and/or performance specification of this part. Information herein should not be disclosed to a third party without the prior written consent of Steatite Antennas.

BP 12/06/2024 2969

