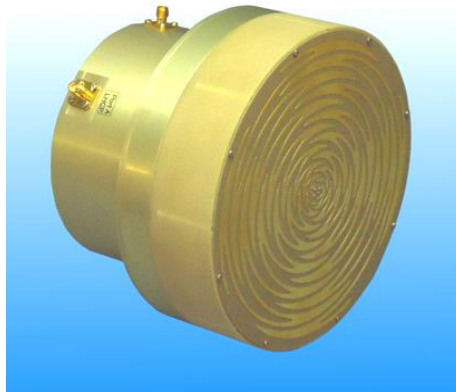


0.7 - 4 GHz Dual Circularly Polarised Sinuous Antenna fitted with SMA type Connectors

Catalogue number **QSI-DC-0.7-4-S-SG**

Q-par reference **QMS-00043**

Contents **Summary**
Typical Gain / Axial Ratio
Typical Beamwidth / Patterns
VSWR

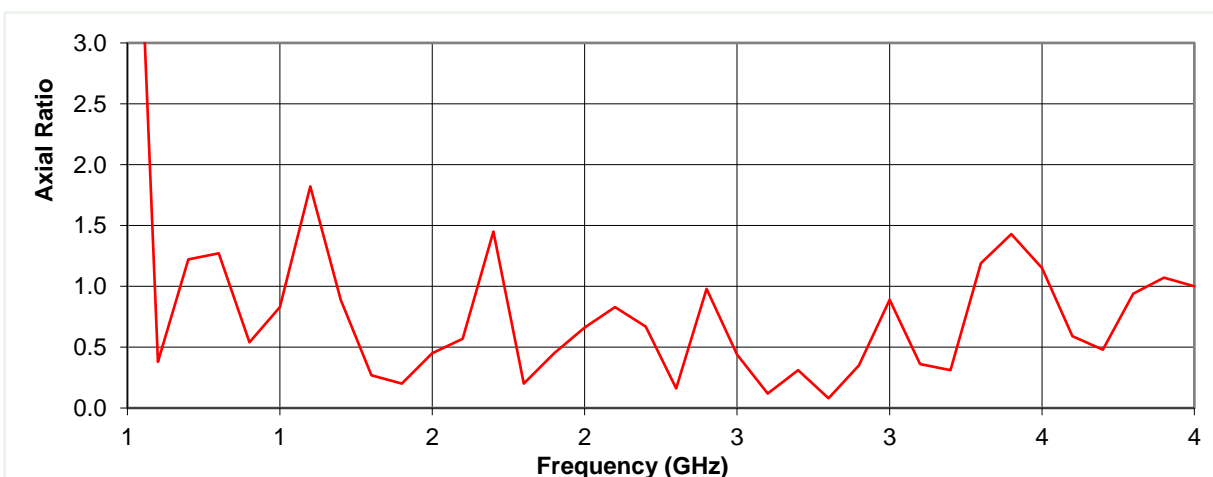
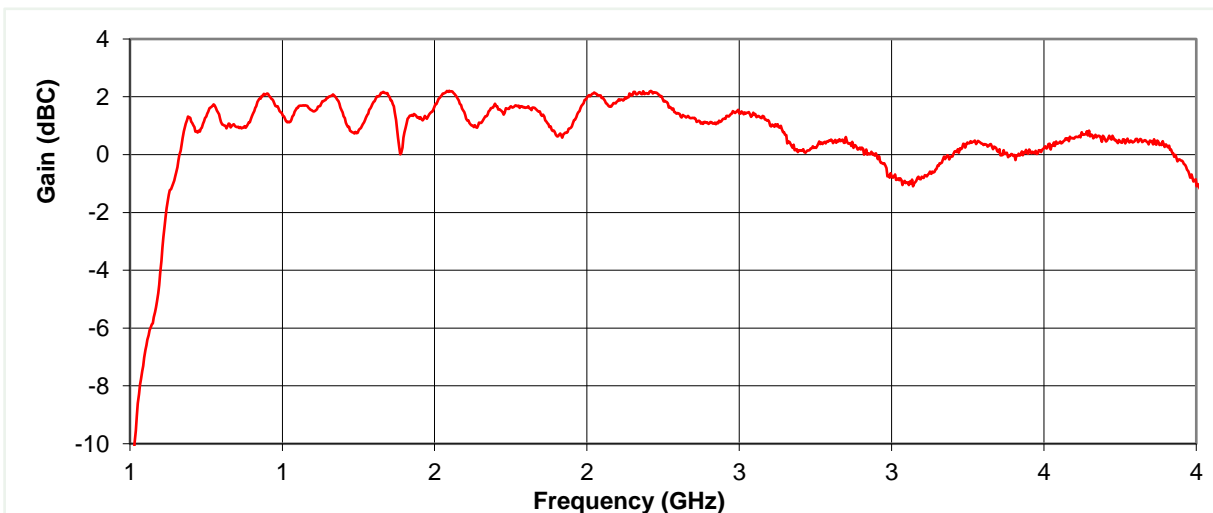


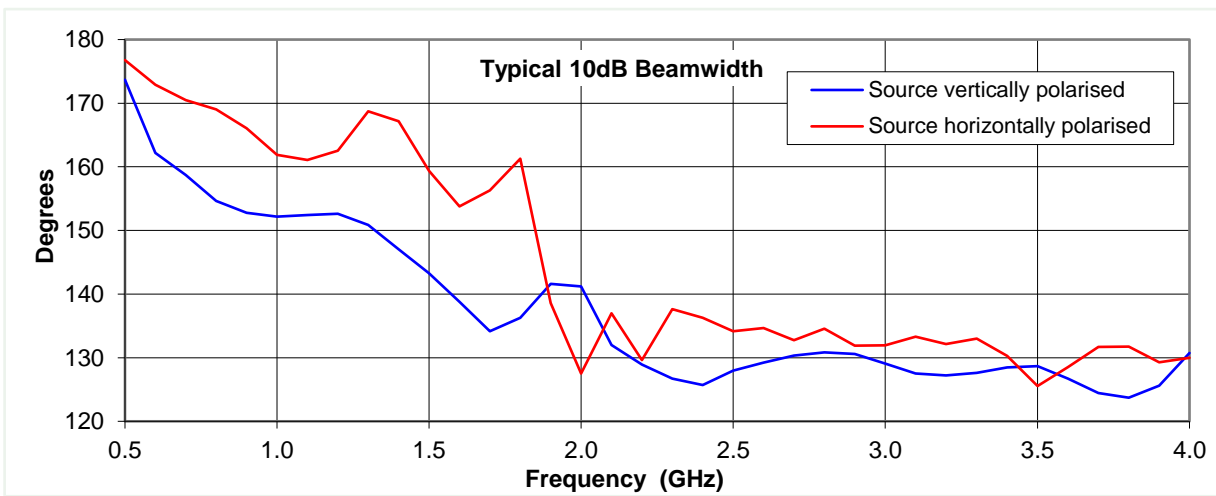
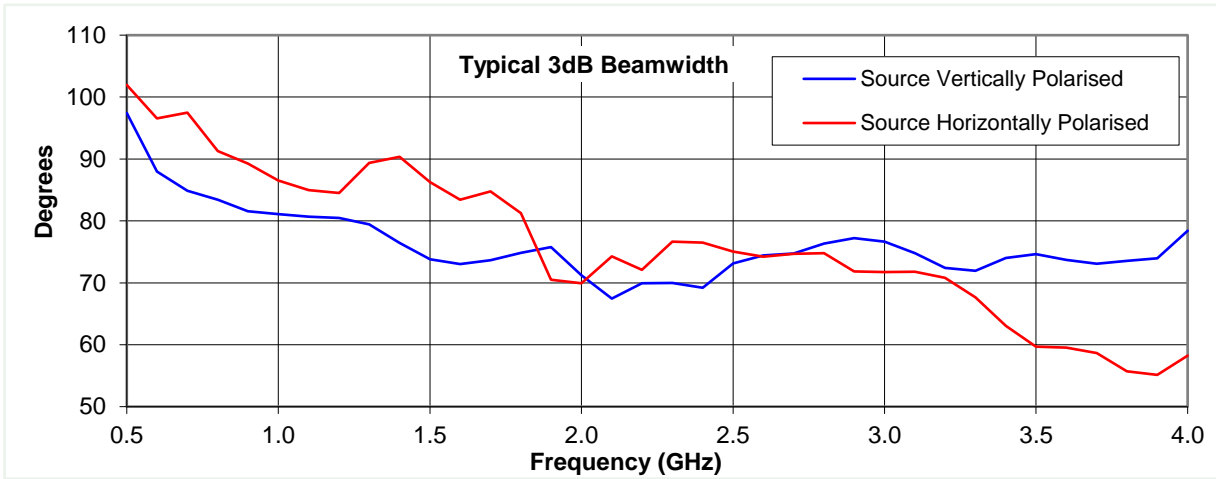
Typical Specification

Frequency	0.7 to 4 GHz
Connector Type	2 x SMA jack
Power Handling	2 Watt c.w.
VSWR	Typically < 1.4 : 1
Gain	-1 to 2.2 dBiC
Antenna Factor	< 2 dB
3dB Beamwidth	55 to 102 degrees
10dB Beamwidth	124 to 177 degrees
Weight	1.3 kg nominal
Maximum Size	152 mm diameter aperture x 109 mm long
Mounting	6 holes, tapped M5 x 7 mm deep, on 137 mm pitch circle diameter
Construction	Aluminium, stainless steel and engineering plastics

Typical Antenna Gain / Factor

This is calculated by reference to standard gain horn antennas, and cross checked with reference to the antenna beamwidth, with an estimated error of +/- 0.8dB.

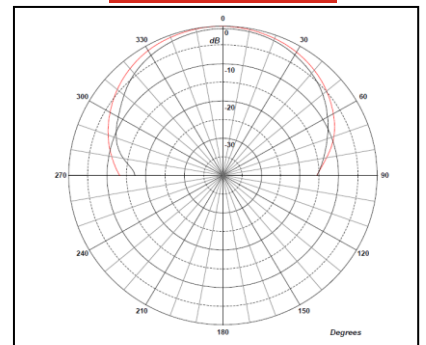
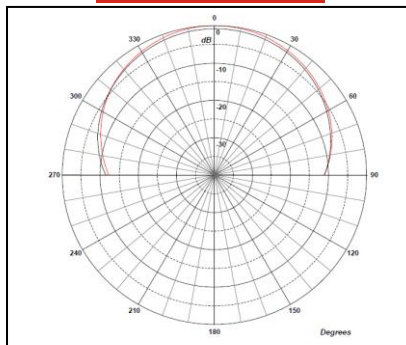
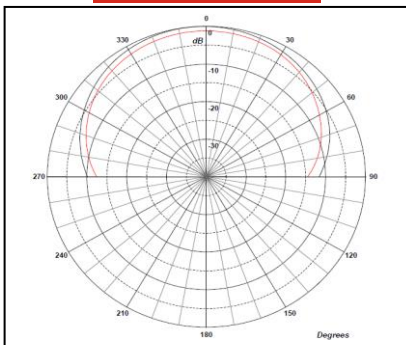




0.7 GHz

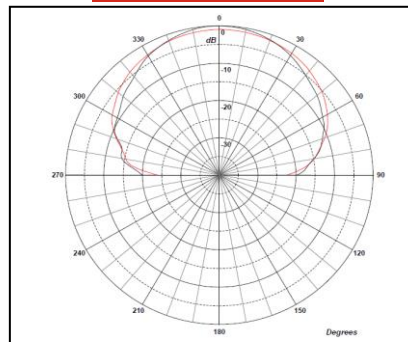
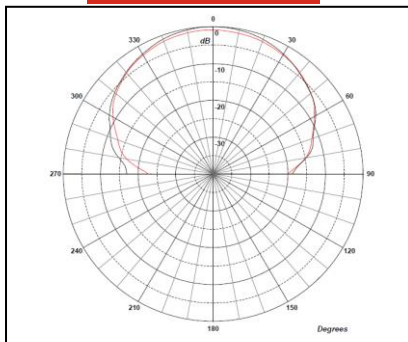
1 GHz

2 GHz



3 GHz

4 GHz



Red trace = E-plane, Blue trace = H-plane cut