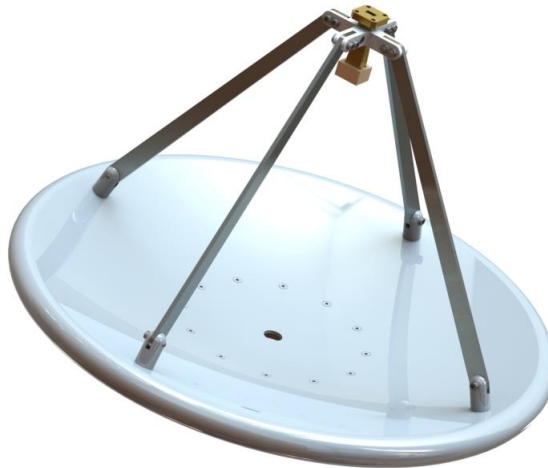


0.34 m Aluminium Reflector & 26 - 40 GHz Wideband Feed fitted with a Waveguide Flange and Radome

Catalogue number **QSR-340-A-200 & QSF-SL-26-40-F-R**

Steatite reference **QMS-00993**

Contents **Summary**
Typical Gain / Antenna Factor
Typical Beamwidth / Patterns



QQD06-2 V7.3

PDM 28/05/2019 3902

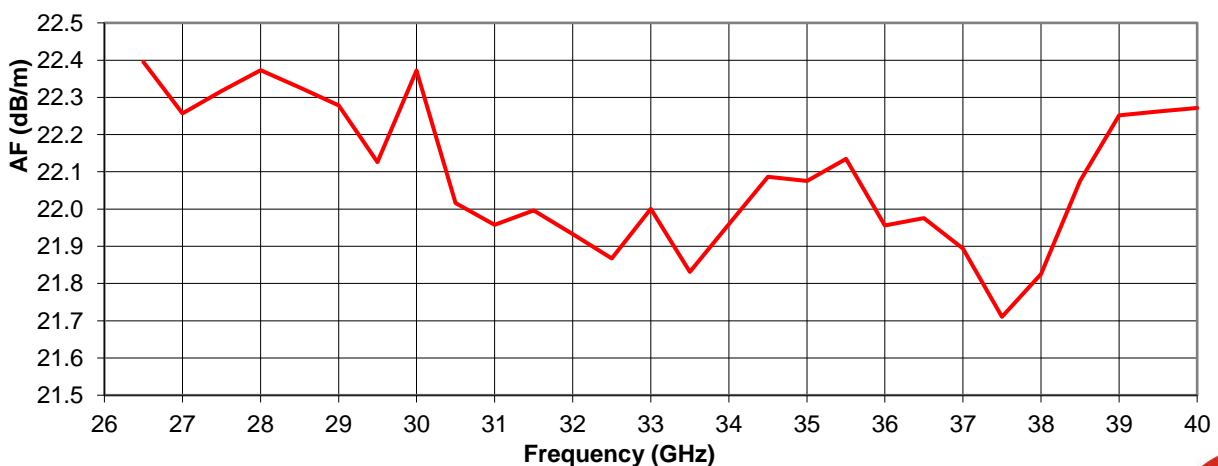
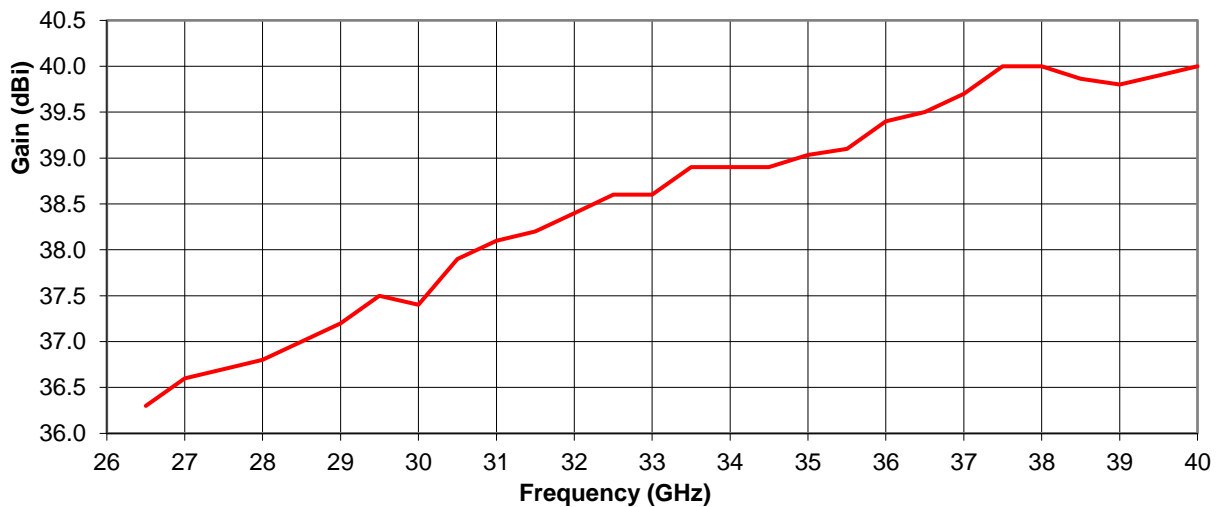


Typical Specification

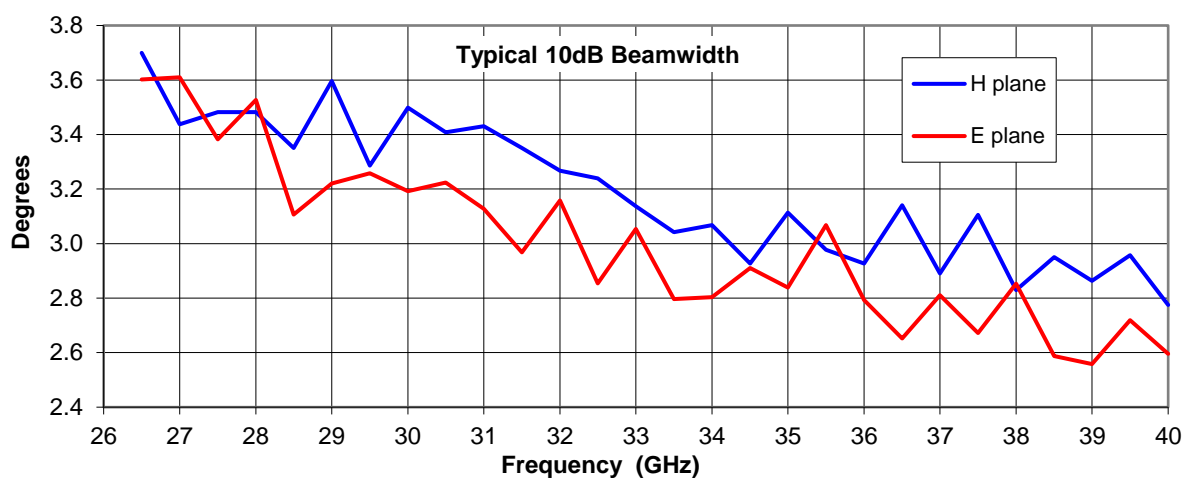
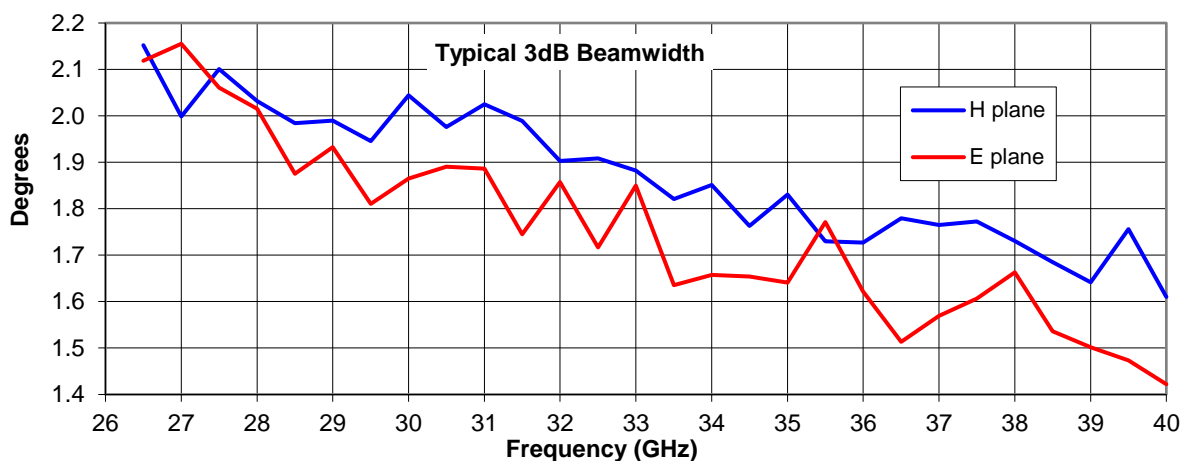
Frequency	26 to 40 GHz
Connector Type	WG22 Flange UG-599/U
Power Handling	5 kW c.w.
VSWR	Typically < 2.0:1
Gain	36.3 to 40 dBi
Antenna Factor	21.7 to 22.4 dB/m
3dB Beamwidth	1 to 2 degrees
10dB Beamwidth	3 to 4 degrees
Weight	2 kg nominal
Maximum Size	Reflector diameter 370 mm max
Mounting	8 holes, tapped M6, 125 mm pitch circle diameter
Construction	Spun aluminium reflector, powdercoat finish. Anodised aluminium legs. Composite feed, painted.

Typical Antenna Gain / Factor

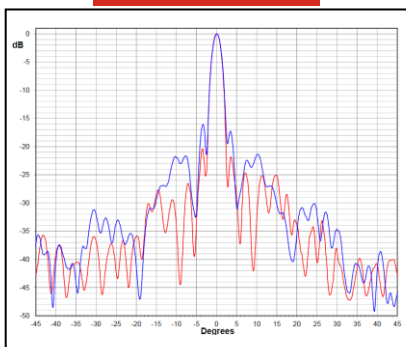
This is calculated by reference to standard gain horn antennas, and cross checked with reference to the antenna beamwidth, with an estimated error of +/- 0.8dB.



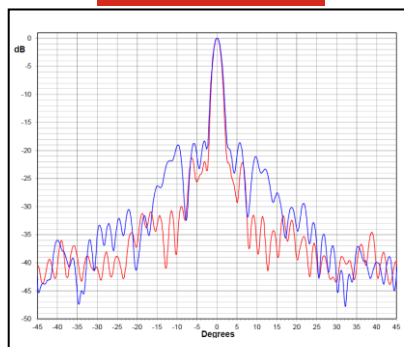
Typical Beamwidth / Radiation Patterns



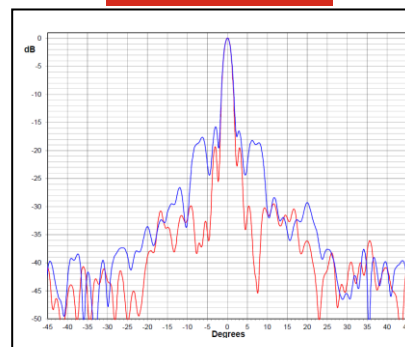
26.5 GHz



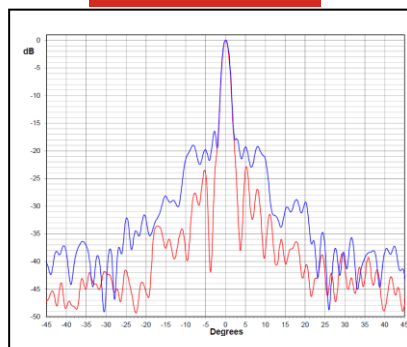
30 GHz



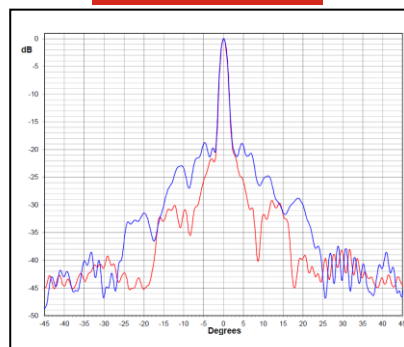
33 GHz



37 GHz



40 GHz



Red trace = E-plane, Blue trace = H-plane cut

