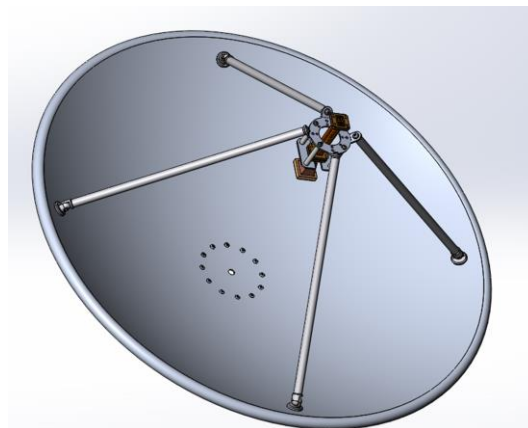


0.9 m Aluminium Reflector & 6.5 - 18 GHz Wideband Feed fitted with a Waveguide Flange and Radome

Catalogue number **QSR-900-A-337 & QWF-SL-6.5-18-F-R**

Steatite reference **QMS-00928**

Contents **Summary**
Typical Gain / Antenna Factor
Typical Beamwidth / Patterns

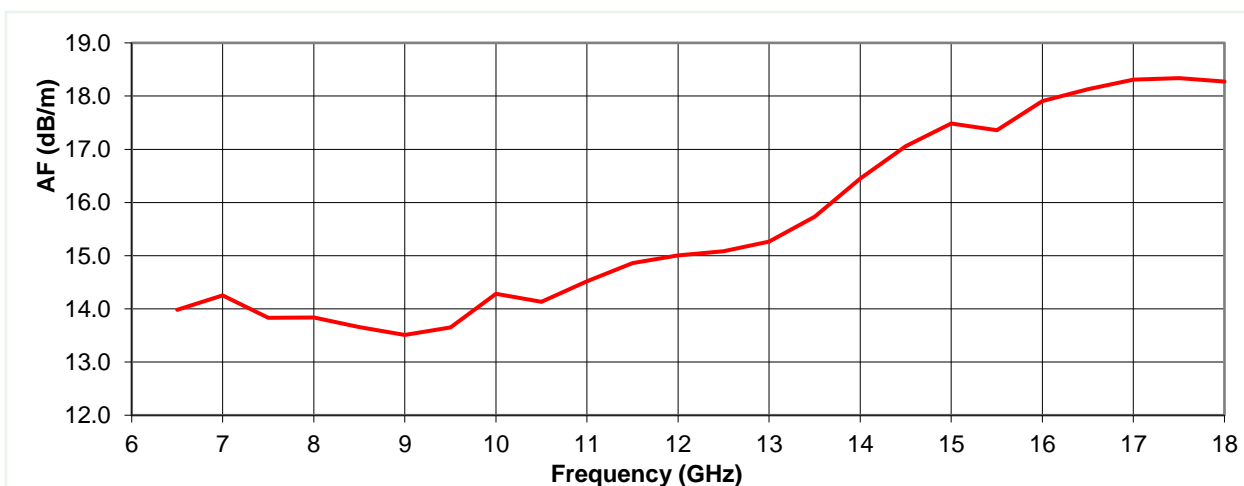
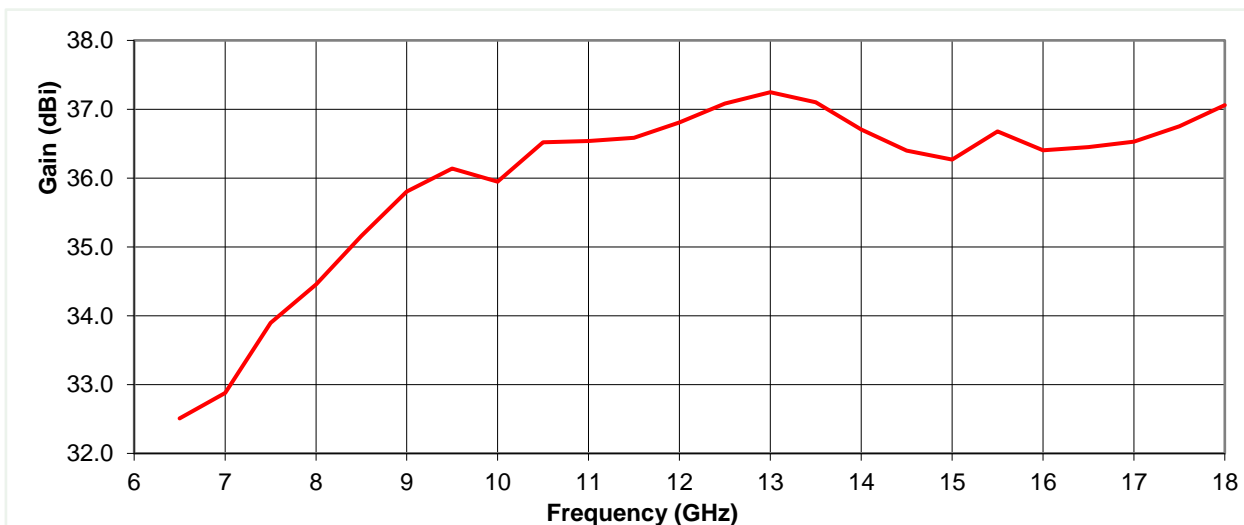


Typical Specification

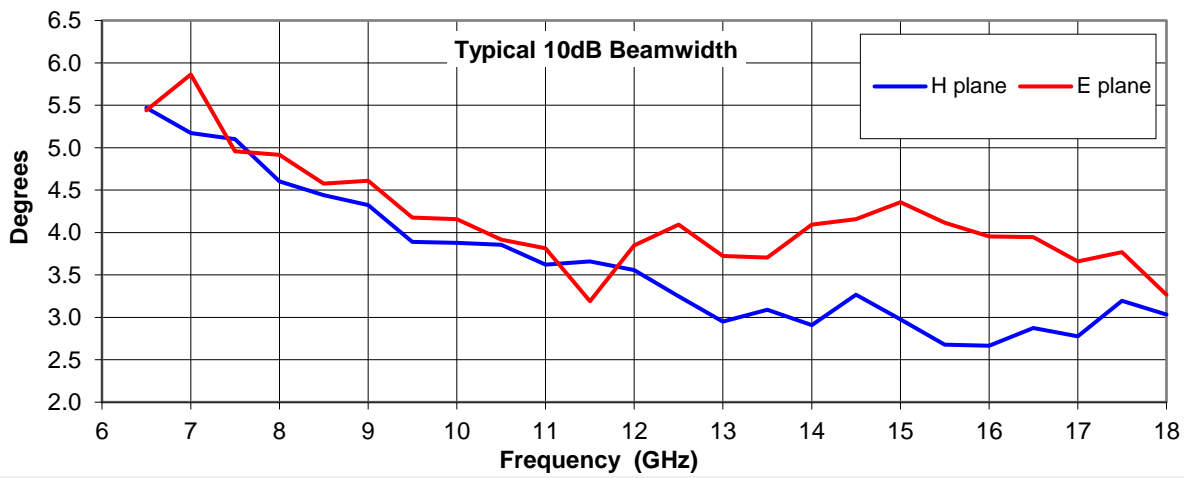
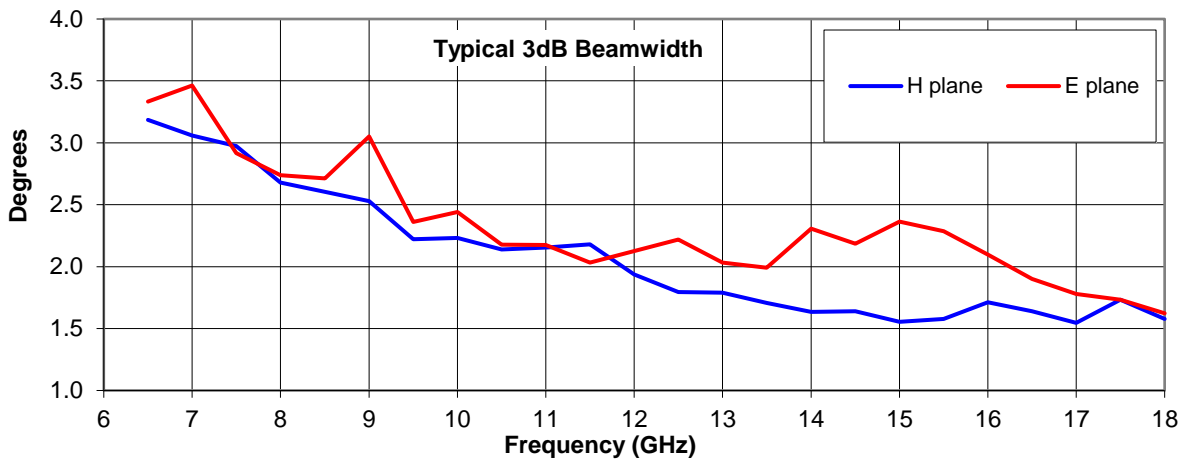
Frequency	6.5 to 18 GHz
Connector Type	WRD-650 Flange
Power Handling	2kW CW (at one atmosphere)
VSWR	Typically < 2.0:1
Gain	32.5 to 37.2 dBi
Antenna Factor	13.5 to 18.3 dB/m
3dB Beamwidth	2 to 3 degrees
10dB Beamwidth	3 to 6 degrees
Weight	7.8 kg nominal
Maximum Size	Reflector diameter 930 mm
Mounting	8 holes, tapped M6, 125 mm pitch circle diameter
Construction	Aluminium reflector, powdercoat finish. Copper horn with plastic radome feed, painted.

Typical Antenna Gain / Factor

This is calculated by reference to standard gain horn antennas, and cross checked with reference to the antenna beamwidth, with an estimated error of +/- 0.8dB.



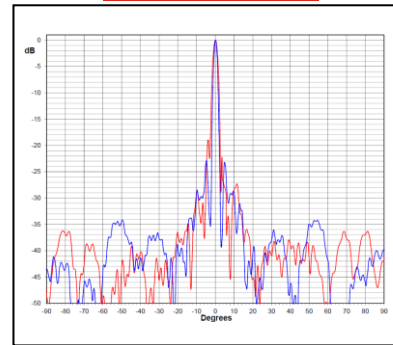
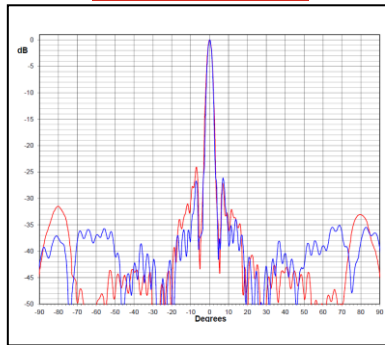
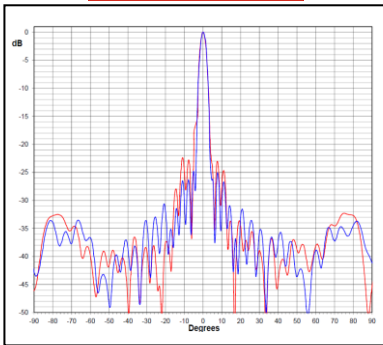
Typical Beamwidth / Radiation Patterns



6.5 GHz

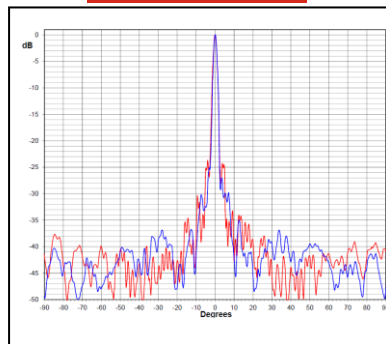
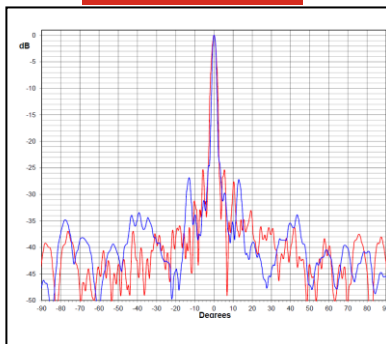
10 GHz

14 GHz



16 GHz

18 GHz



Red trace = E-plane, Blue trace = H-plane cut

