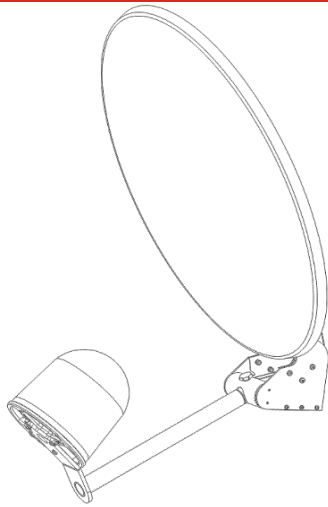




0.7 m Aluminium Offset Reflector & 0.9 - 18 GHz Dual Polar Wideband Horn Antenna fitted with SMA type Connectors and a Radome

QMS-00733

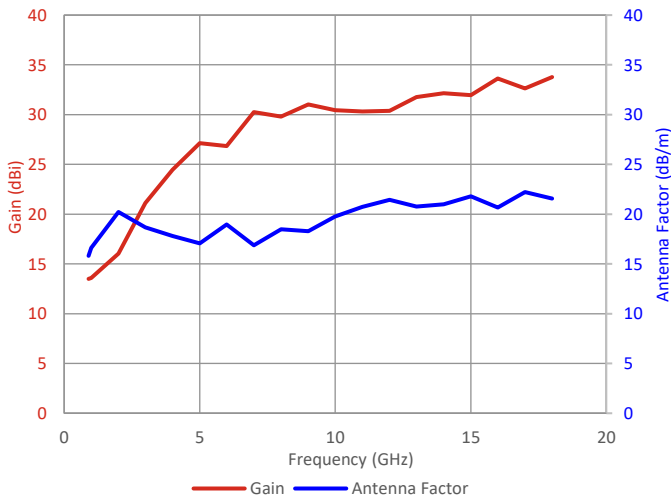


Please contact Steatite Antennas for a full interface control drawing.

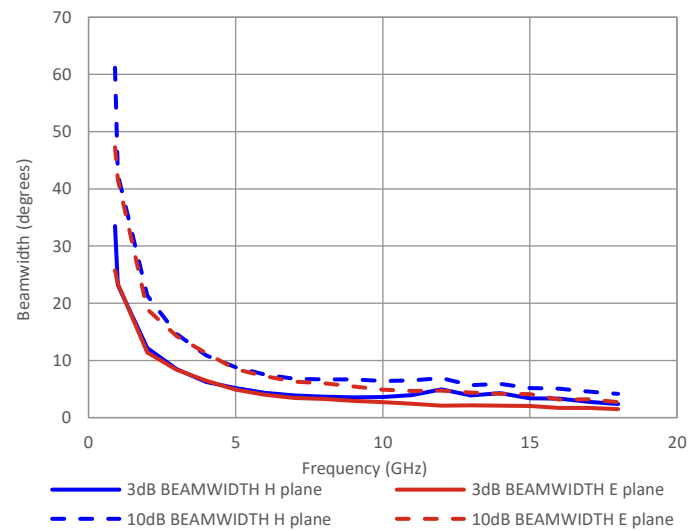
Typical Specification

Frequency	0.9 to 18 GHz
Connector	2 x SMA type jack
VSWR	Typically < 2.5:1.
Gain	13.5 to 33.8 dBi
Isolation	-55.5 to -25.5 dB
3 dB Beamwidth	1.5 to 33.5 degrees
10 dB Beamwidth	3 to 61 degrees
Power	40 Watt c.w.
Size & Weight	Reflector Ø760 mm maximum, 10kg nominal.
Mounting	Tripod mount plate. See interface drawing.
Environmental	MIL-STD-810H Storage Temp -40°C to +70°C. Humidity: 95% RH

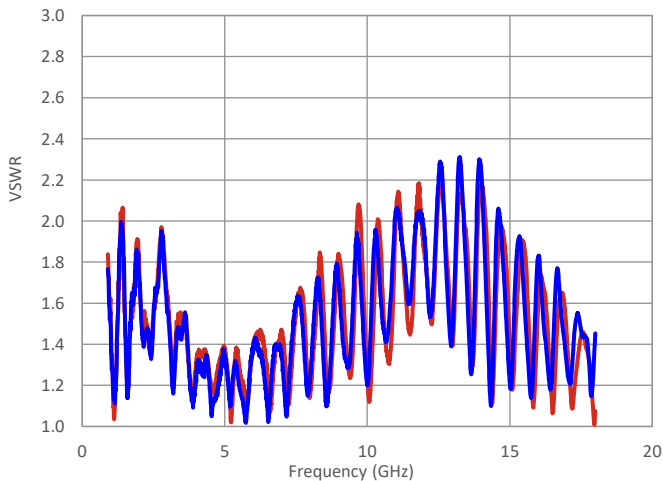
Typical Gain/Antenna Factor



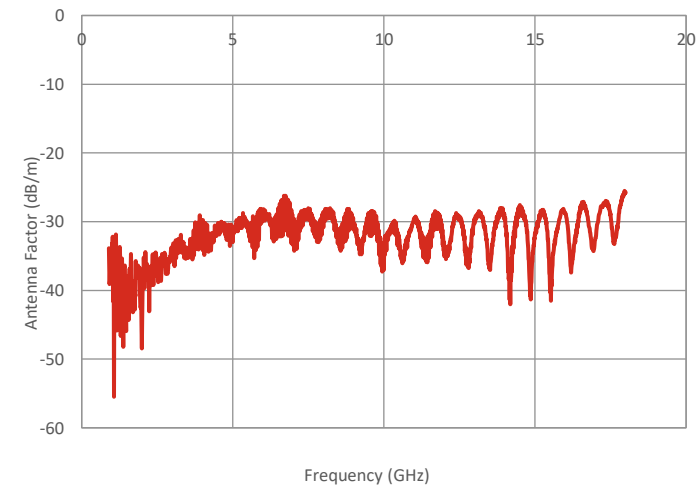
Typical Beamwidth



Typical VSWR



Typical Isolation





QQD06-2 V8.1

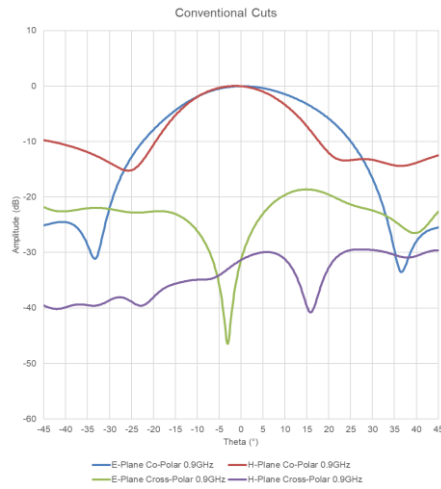
Antenna Radiation Patterns QMS-00733

SP 01/03/22 1893

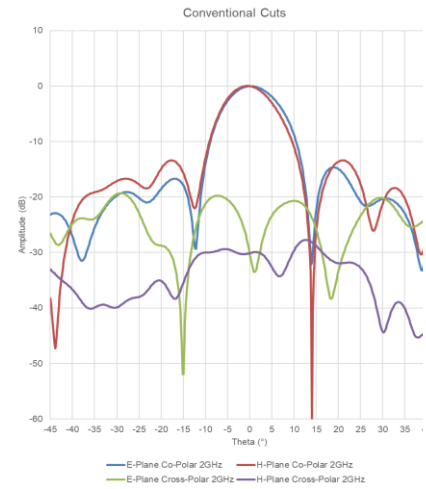
QSR-700-A-OST & QWH-DL-0.9-18-S-SG-R

0.7 m Aluminium Offset Reflector & 0.9 - 18 GHz Dual Polar Wideband Horn Antenna fitted with SMA type Connectors

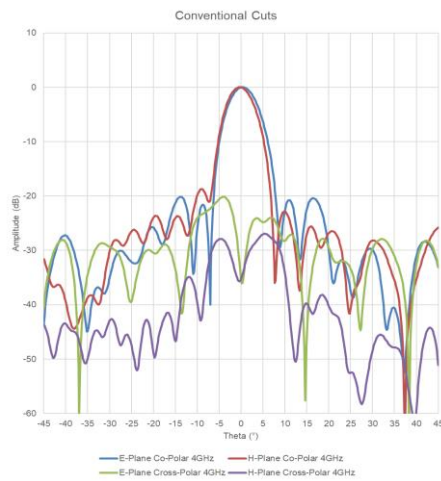
0.9 GHz Port 1



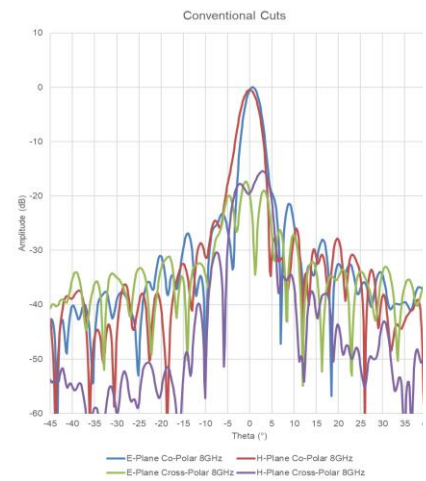
2.0 GHz Port 1



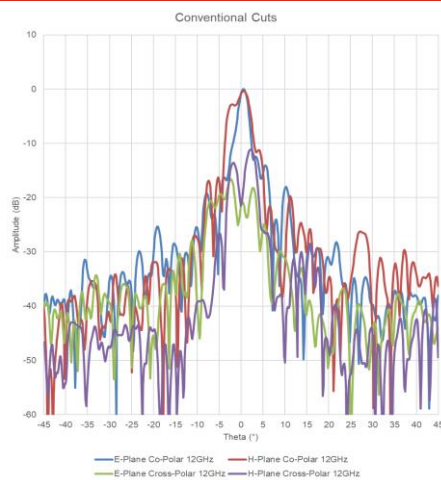
4.0 GHz Port 1



8.0 GHz Port 1



12 GHz Port 1



18 GHz Port 1

