

0.6 m Aluminium Reflector & 2 - 18 GHz Wideband Reflector Feed fitted with an SMA type Connector and a Radome

Catalogue number **QSR-600-A-228 & QWF-SL-2-18-S-R**

Q-par reference **QMS-00617**

Contents **Summary**
Typical Gain / Antenna Factor
Typical Beamwidth / Patterns
VSWR

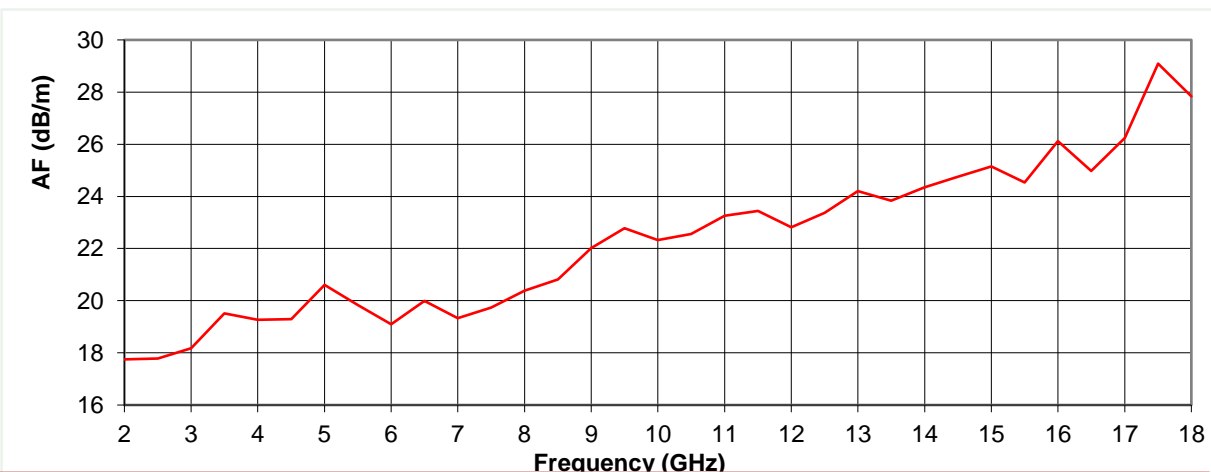
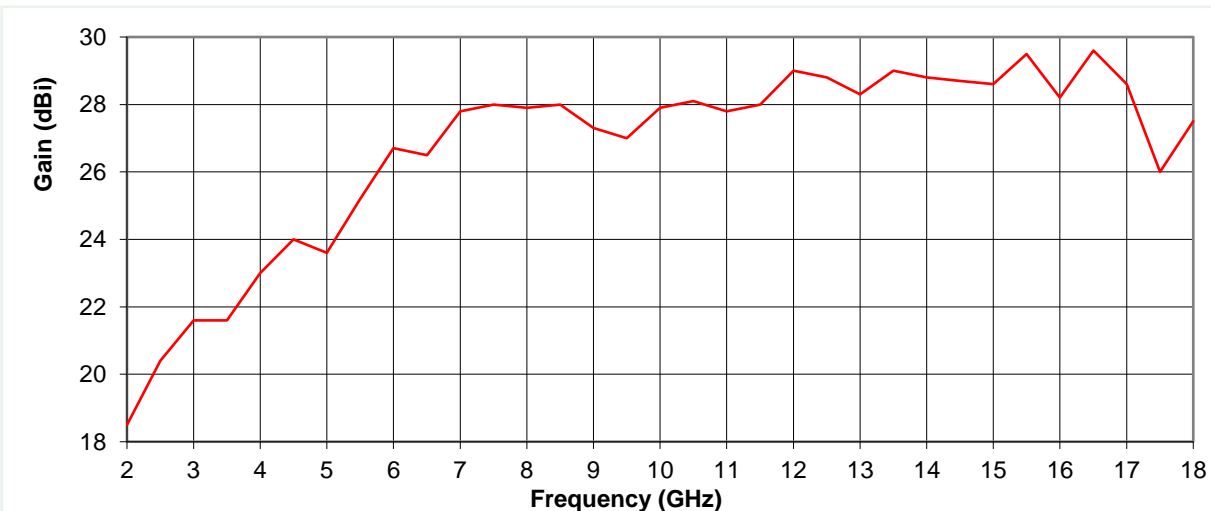


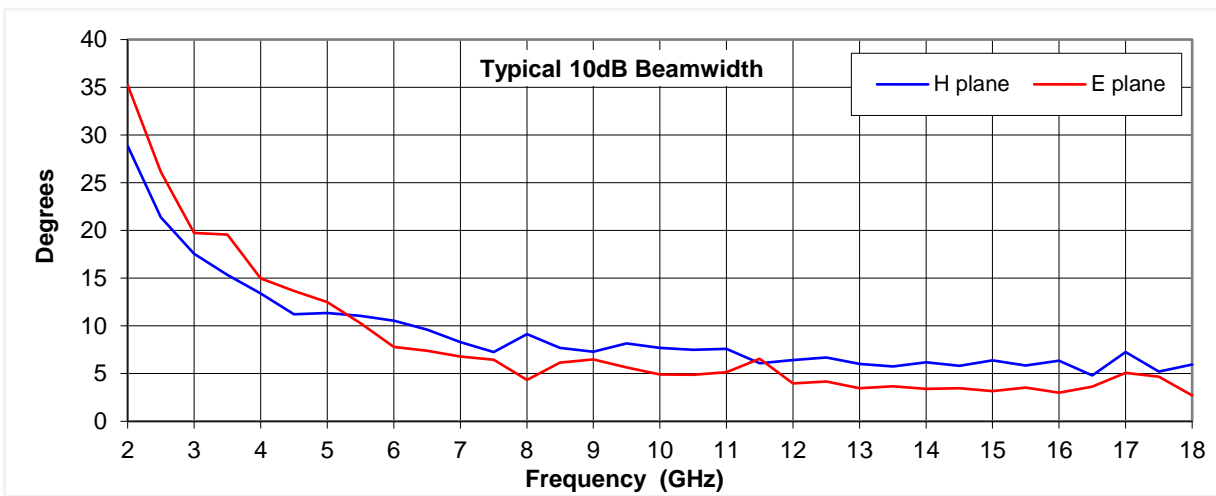
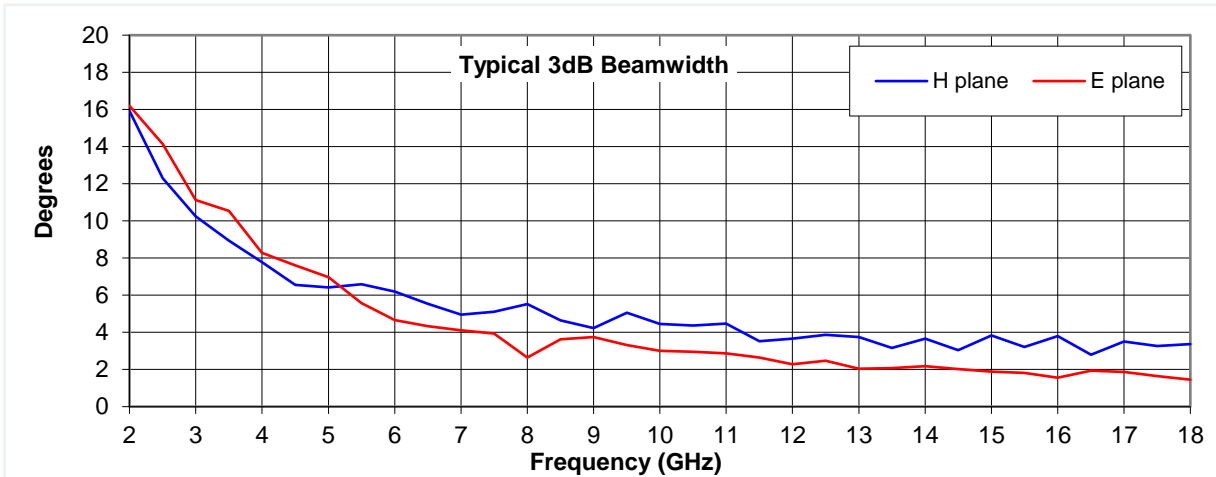
Typical Specification

Frequency	2 to 18 GHz
Connector Type	SMA
Power Handling	20 Watt c.w.
VSWR	Typically < 2.5 : 1
Gain	18.5 to 29.6 dBi
Antenna Factor	17.8 to 29.1 dB/m
3dB Beamwidth	1 to 16 degrees
10dB Beamwidth	3 to 35 degrees
Weight	5 kg nominal
Maximum Size	Reflector diameter 625 mm max
Mounting	8 holes, tapped M6 on 125 mm pitch circle diameter
Construction	Spun aluminium reflector, powdercoat finish. Feed from aluminium and engineering plastics, painted.

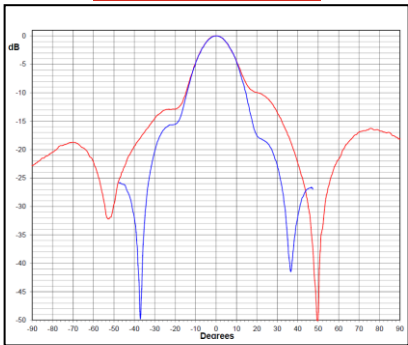
Typical Antenna Gain / Factor

This is calculated by reference to standard gain horn antennas, and cross checked with reference to the antenna beamwidth, with an estimated error of +/- 0.8dB.

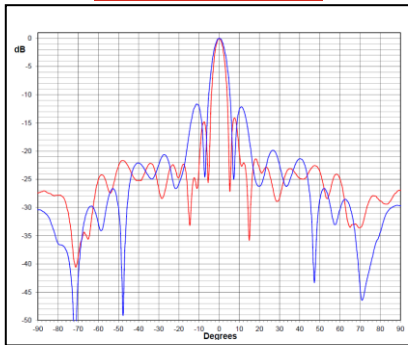




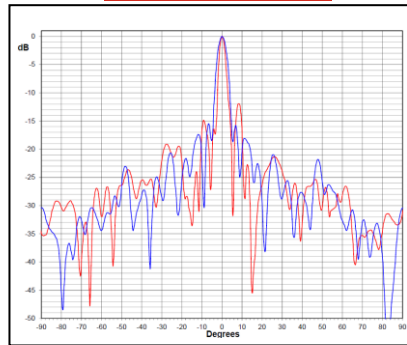
2 GHz



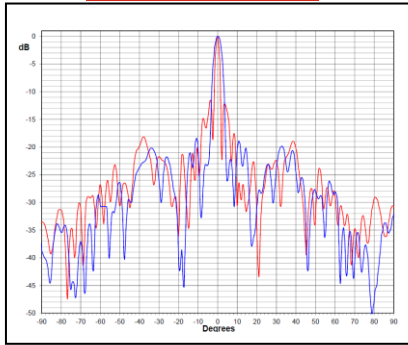
6 GHz



11 GHz



15 GHz



18 GHz

