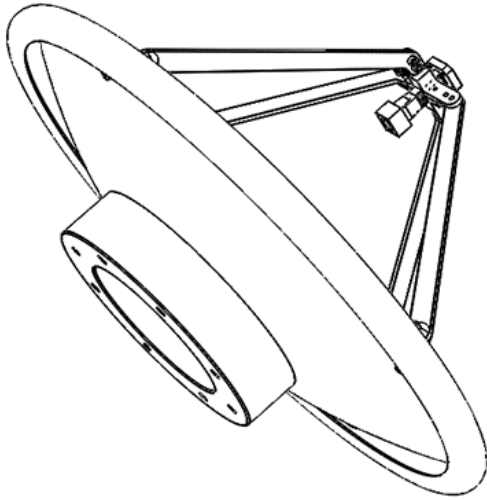


QMS-00371

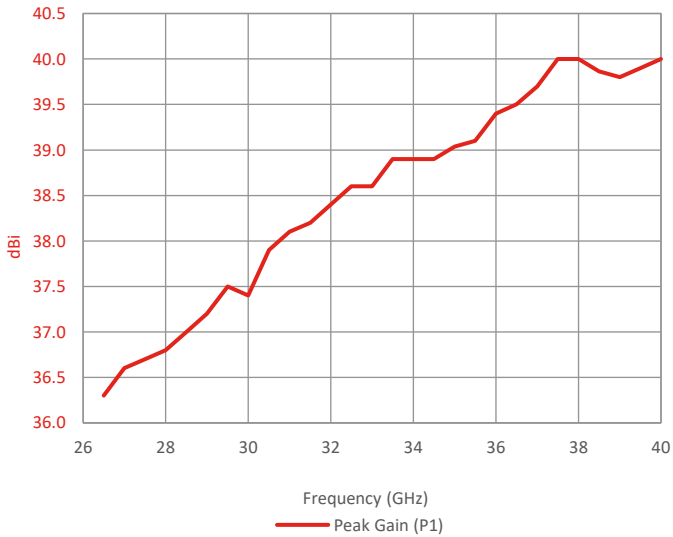


Please contact Steatite Antennas for a full interface control drawing.

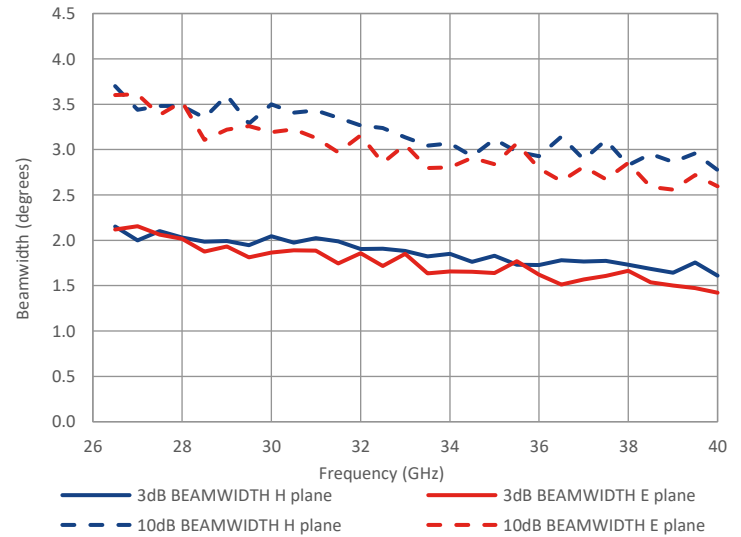
Typical Specification

Frequency	26 to 40 GHz
Connector	WG22 Flange UG-599/U
VSWR	Typically < 2.0:1
Gain	36.3 to 40 dBi
Antenna Factor	21.7 to 22.4 dB/m
3 dB Beamwidth	1.4 to 2.2 degrees
10 dB Beamwidth	2.6 to 3.7 degrees
Power	Typically 5 kW c.w.
Size & Weight	Ø 373mm x 228mm (D x H), 2.5kg nominal
Mounting	8 holes, tapped M6, 125 mm PCD
Environmental	Please contact Steatite for advice.

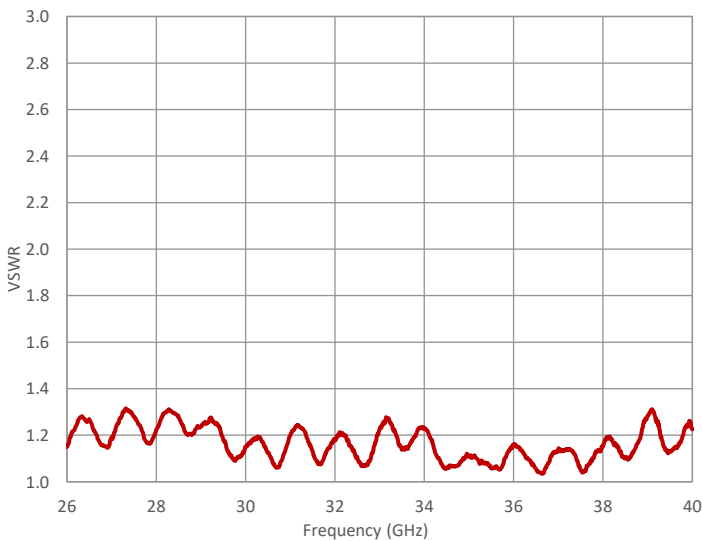
Typical Gain



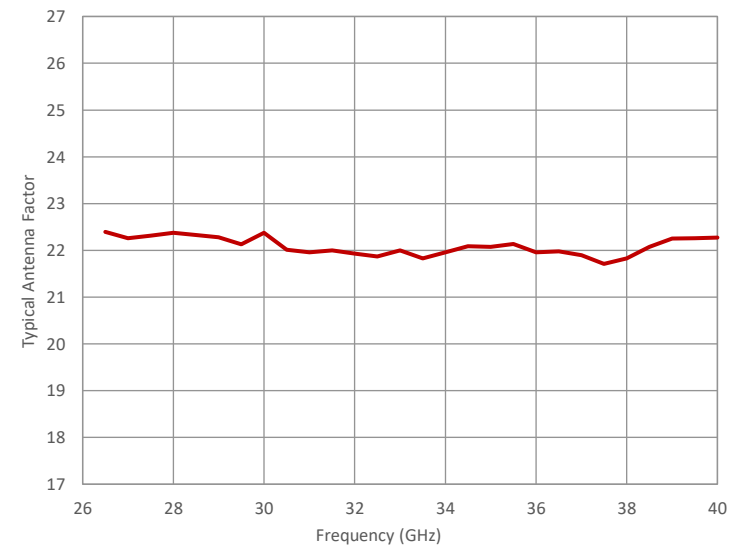
Typical Beamwidth



Typical VSWR



Typical Antenna Factor



Steatite Antennas reserve the right to change and/or update this specification whereby it is deemed that this would improve either the production and/or performance specification of this part. Information herein should not be disclosed to a third party without the prior written consent of Steatite Antennas.

BP 19/06/2024 3382

