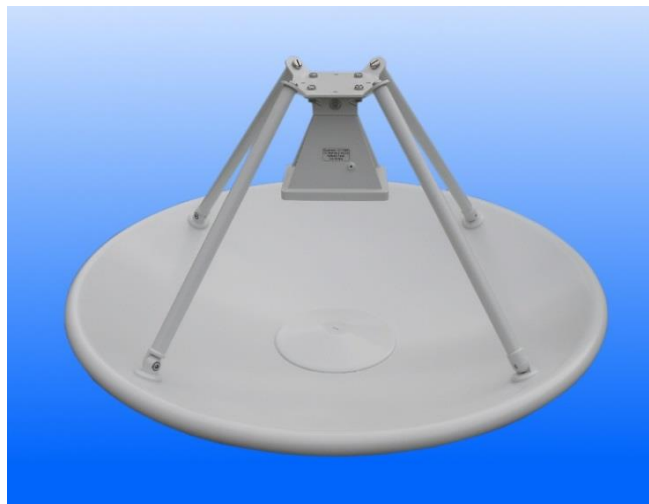


0.6 m Aluminium Reflector & 2-18 GHz Wideband Feed fitted with an N type Connector and Radome

Catalogue number **QSR-600-A-228 & QWF-SL-2-18-N-R**

Steatite reference **QMS-00345**

Contents **Summary**
Typical Gain / Antenna Factor
Typical Beamwidth / Patterns
VSWR



QQD06-2 V7.3

PDM 31/01/2019 4845

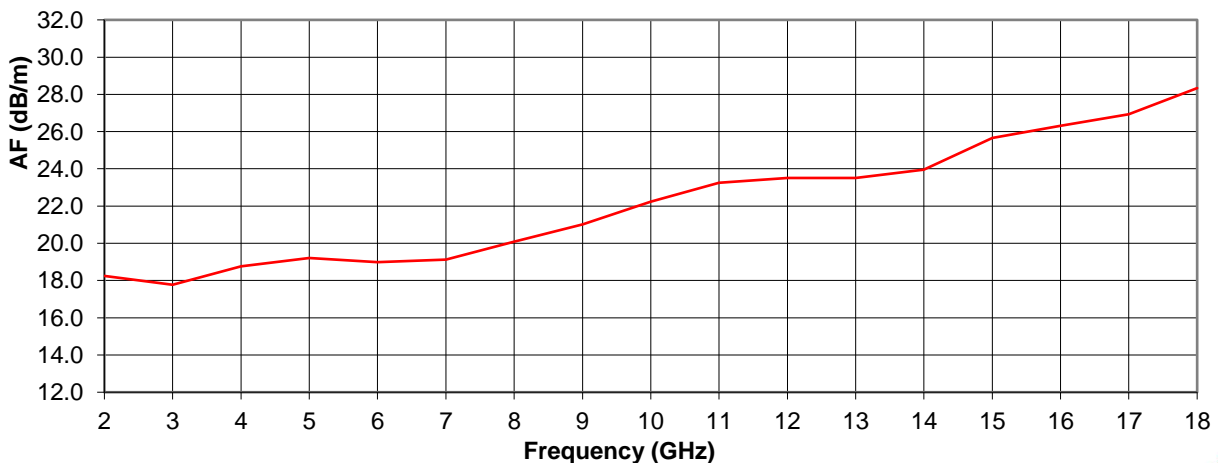
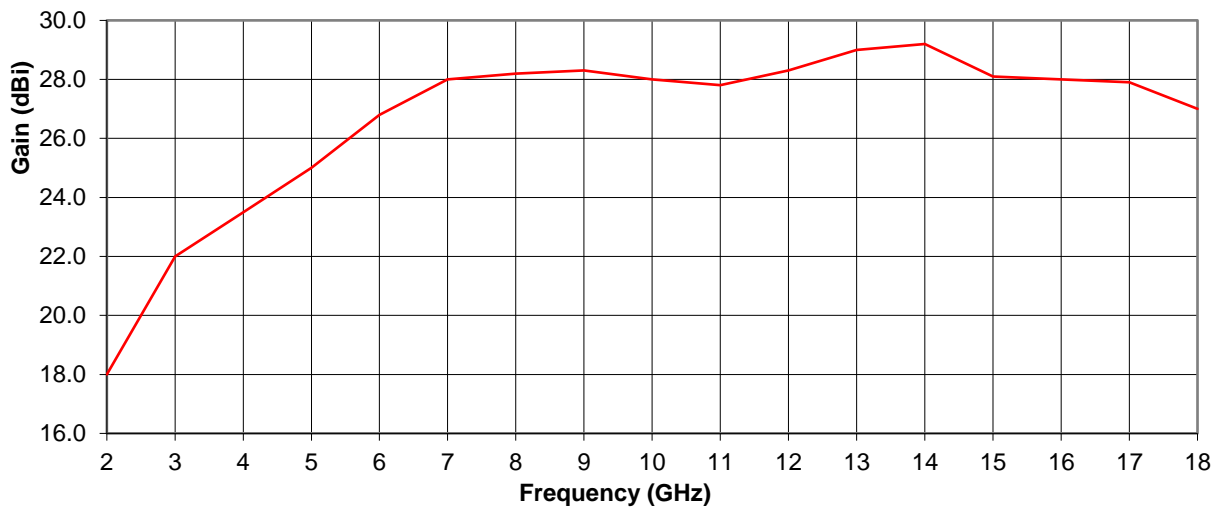


Typical Specification

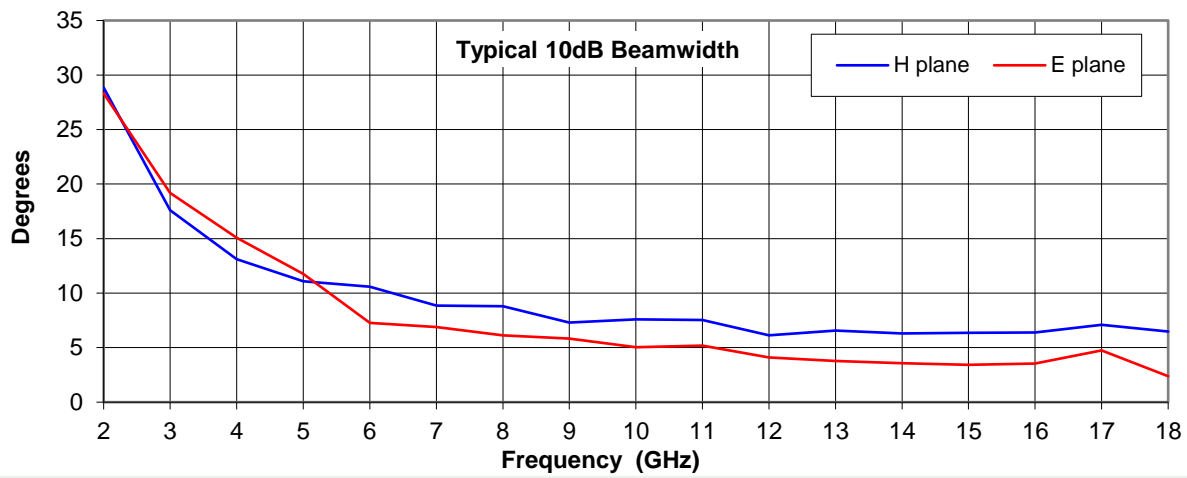
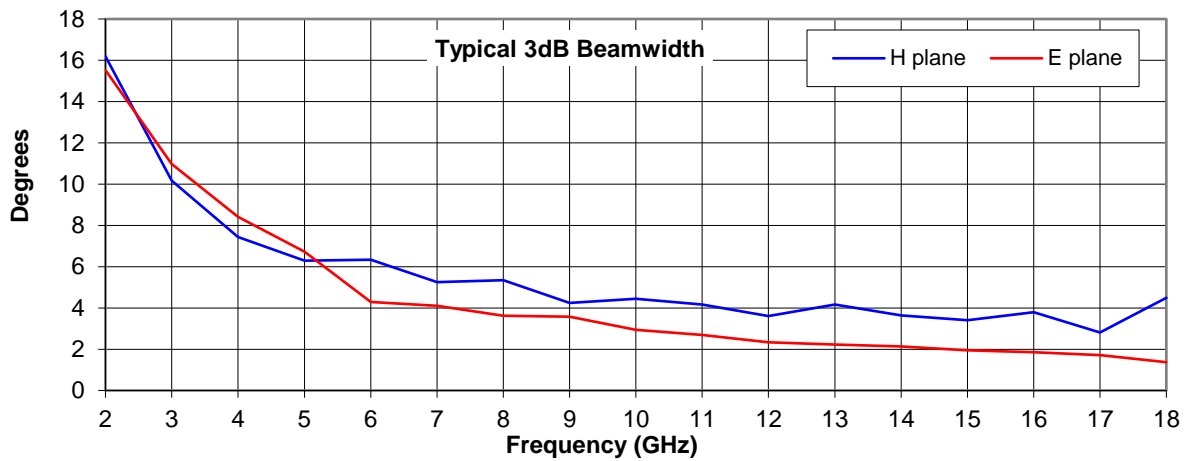
Frequency	2 to 18 GHz
Connector Type	N type jack
Power Handling	40 Watt c.w.
VSWR	Typically < 2.5 : 1
Gain	18 to 29.2 dBi
Antenna Factor	17.8 to 28.3 dB/m
3dB Beamwidth	1.4 to 16.2 degrees
10dB Beamwidth	2.4 to 28.9 degrees
Weight	5 kg nominal
Maximum Size	Reflector diameter 625 mm max
Mounting	8 holes, tapped M6 on 125 mm pcd
Construction	Spun aluminium reflector. Powdercoat finish.

Typical Antenna Gain / Factor

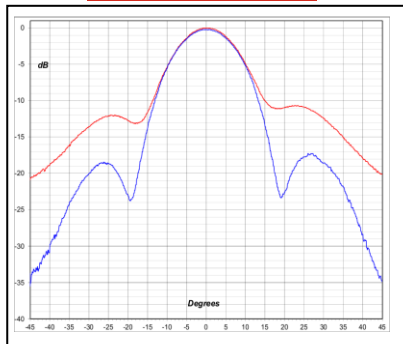
This is calculated by reference to standard gain horn antennas, and cross checked with reference to the antenna beamwidth, with an estimated error of +/- 0.8dB.



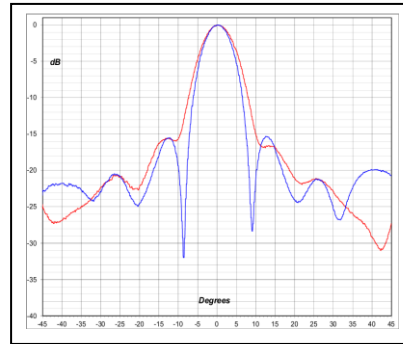
Typical Beamwidth / Radiation Patterns



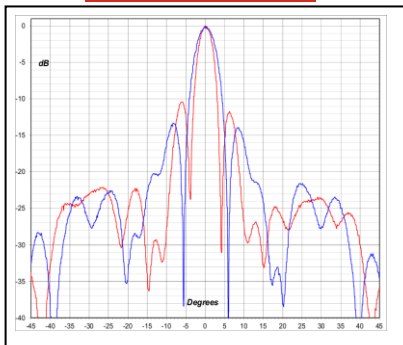
2 GHz



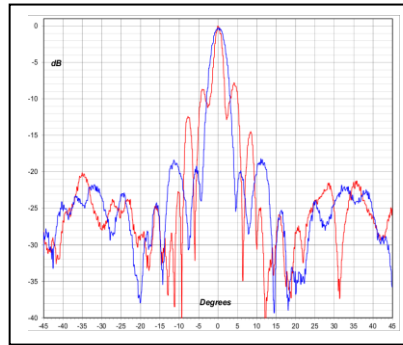
4 GHz



8 GHz



16 GHz



Red trace = E-plane, Blue trace = H-plane cut

