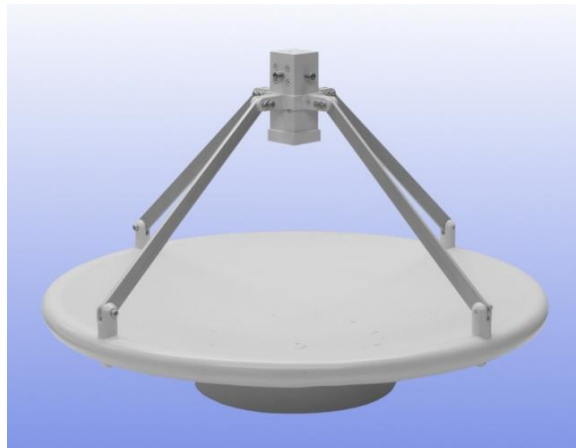


0.34 m Aluminium Reflector & 18 - 40 GHz Dual Polar Wideband Feed fitted with K type Connectors and a Radome

Catalogue number **QSR-340-A-152 & QWF-DL-18-40-K-R**

Q-par reference **QMS-00312**

Contents **Summary**
Typical Gain
Typical Beamwidth / Patterns

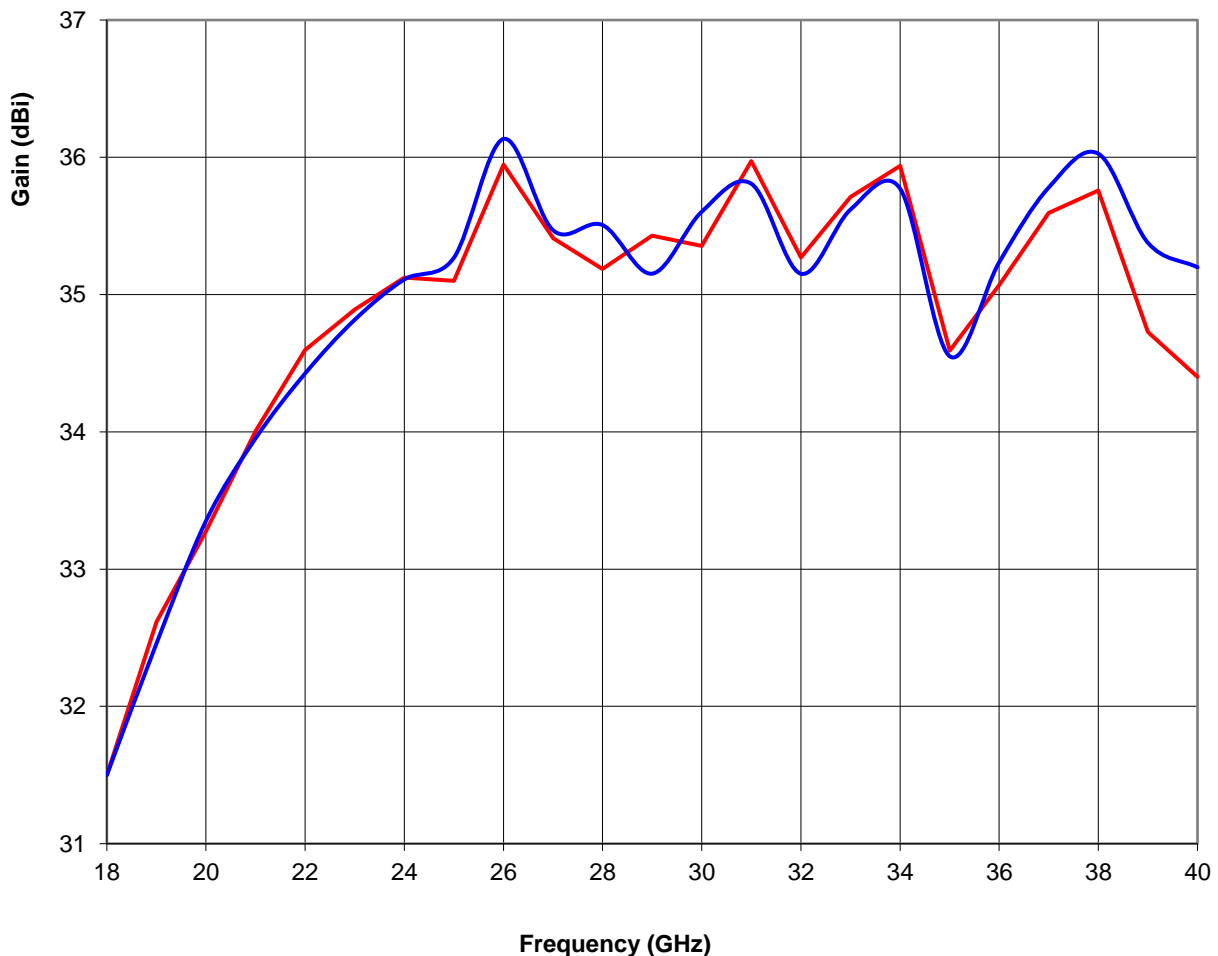


Typical Specification

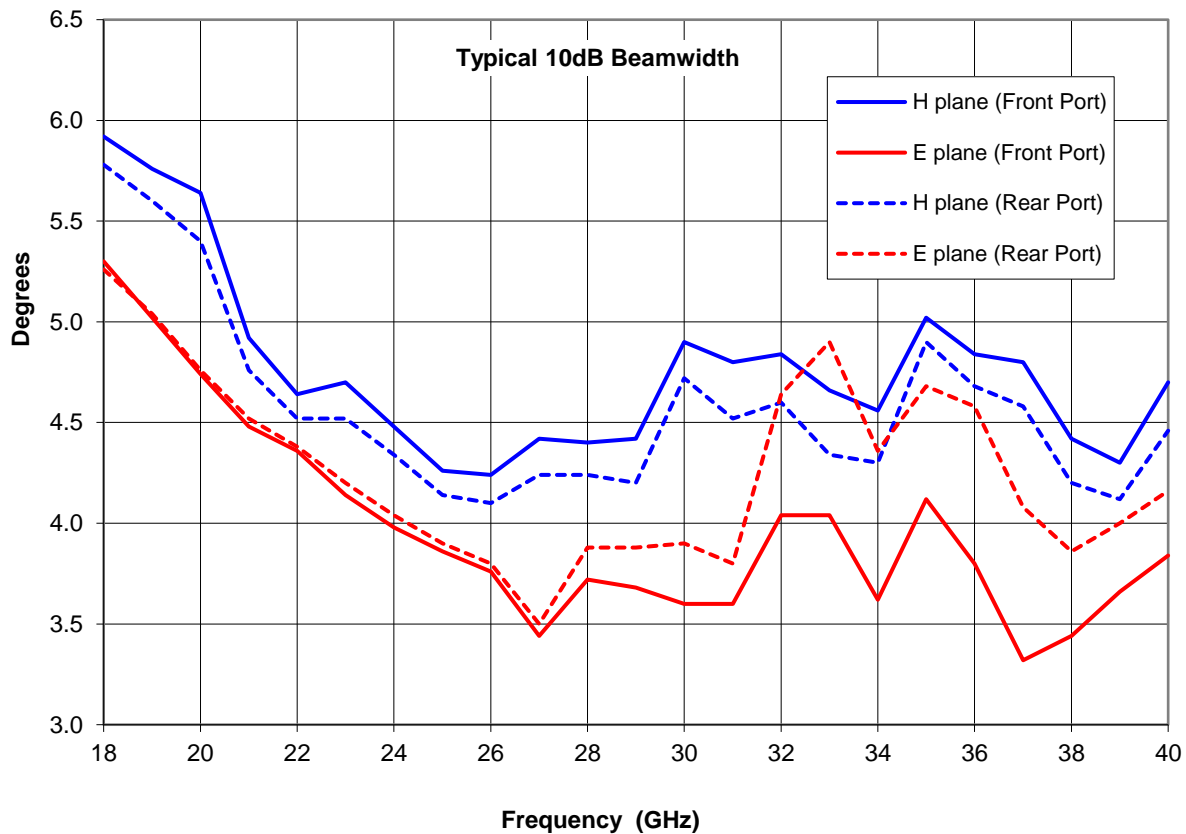
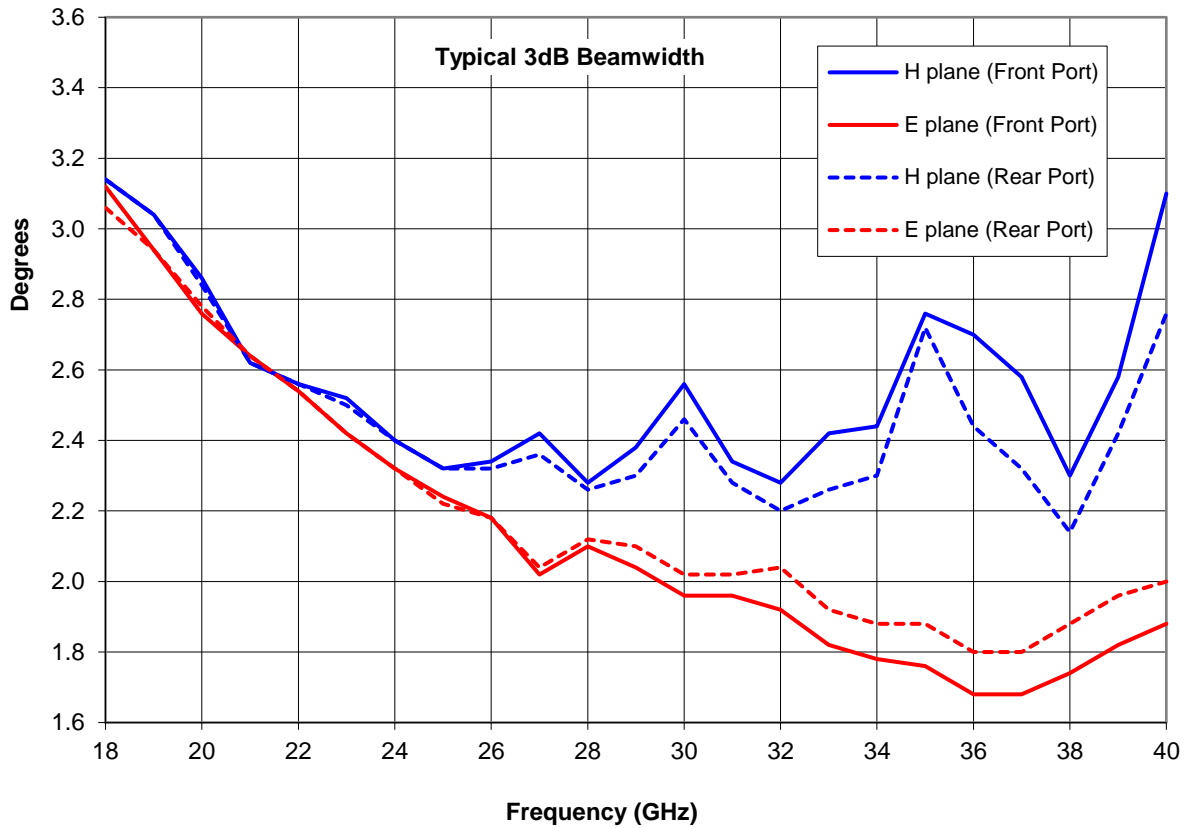
Frequency	18 to 40 GHz
Connector Type	2 x K type (2.9mm) jack
Power Handling	20 Watt c.w.
VSWR	Typically < 2.4:1
Gain	31.5 to 36.1 dBi
Isolation	> 25 dB (between connectors)
3dB Beamwidth	2 to 3 degrees
10dB Beamwidth	3 to 6 degrees
Weight	2.2 kg nominal
Maximum Size	Reflector diameter 370 mm maximum
Mounting	8 holes, tapped M6, 125 mm pitch circle diameter
Construction	Spun aluminium reflector, powdercoat finish. Anodised aluminium legs. Composite aluminium / plastic radome feed, painted.

Typical Antenna Gain

This is calculated by reference to standard gain horn antennas, and cross checked with reference to the antenna beamwidth, with an estimated error of +/- 0.8dB.

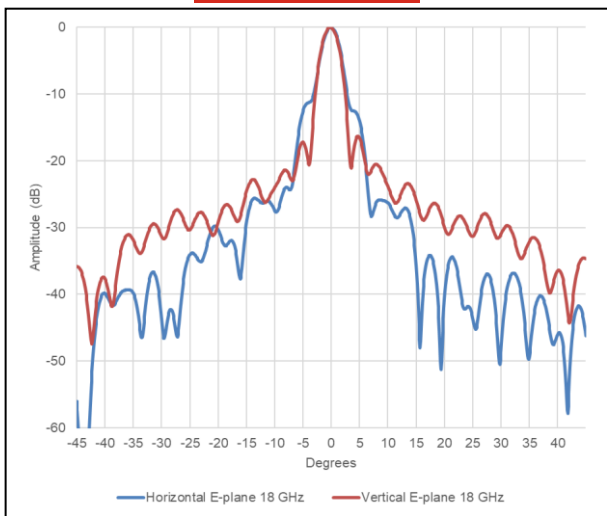


Typical Beamwidth

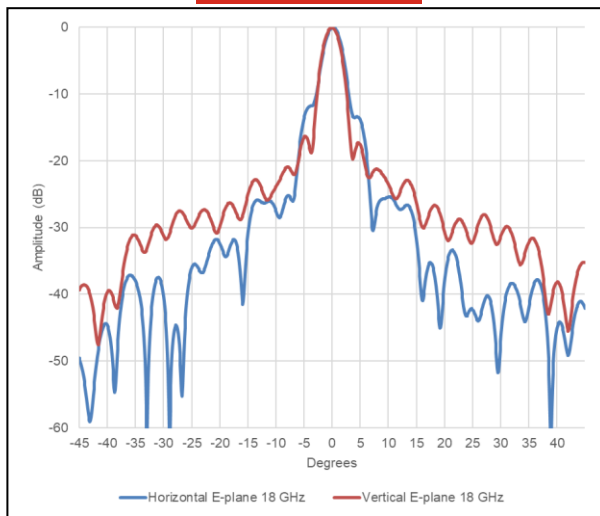


Typical Radiation Patterns

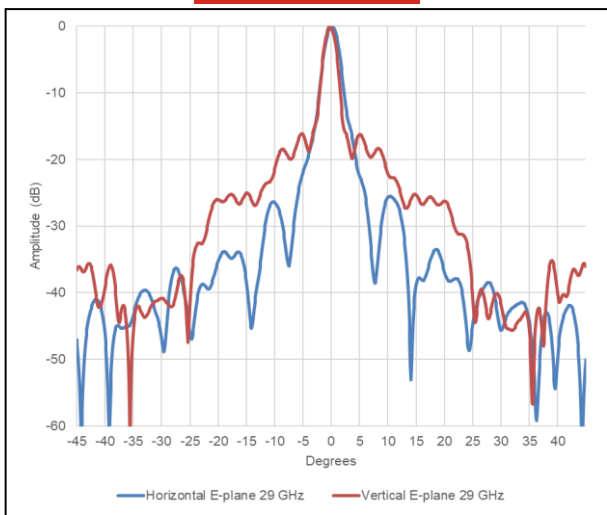
18 GHz Front Port



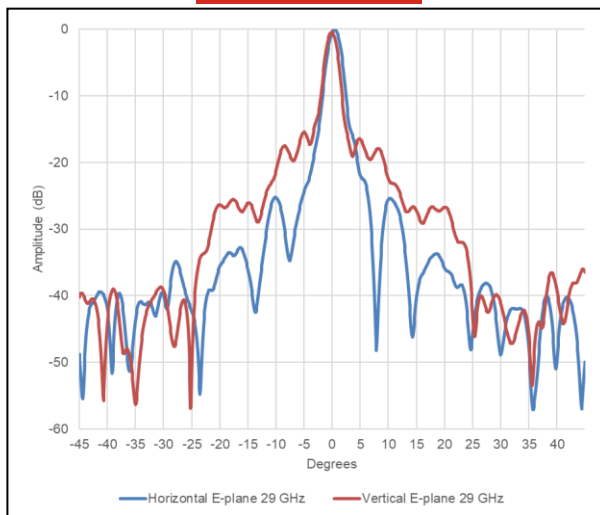
18 GHz Rear Port



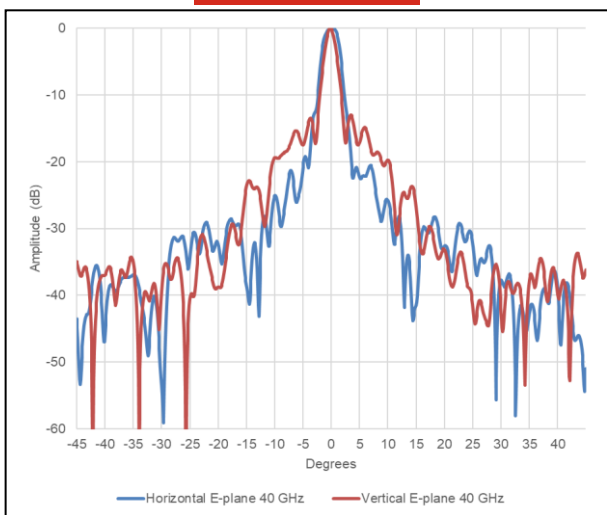
29 GHz Front Port



29 GHz Rear Port



40 GHz Front Port



40 GHz Rear Port

