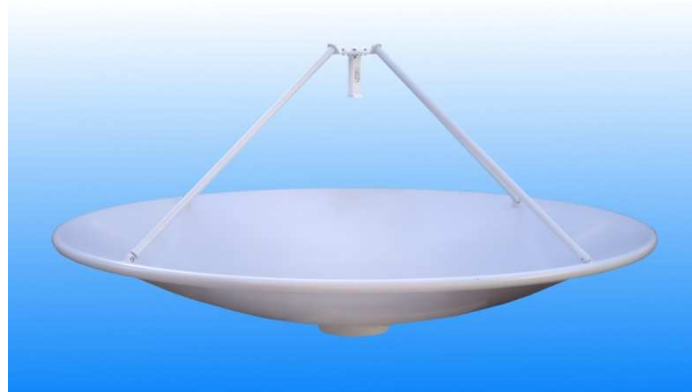


1.2 m Aluminium Reflector & 8-12 GHz Feed fitted with a Waveguide Flange and Radome

Catalogue number **QSR-1200-A-457 & QSF-SL-8-12-F-R**

Q-par reference **QMS-00290**

Contents **Summary**
Typical Gain / Antenna Factor
Typical Beamwidth / Patterns
VSWR

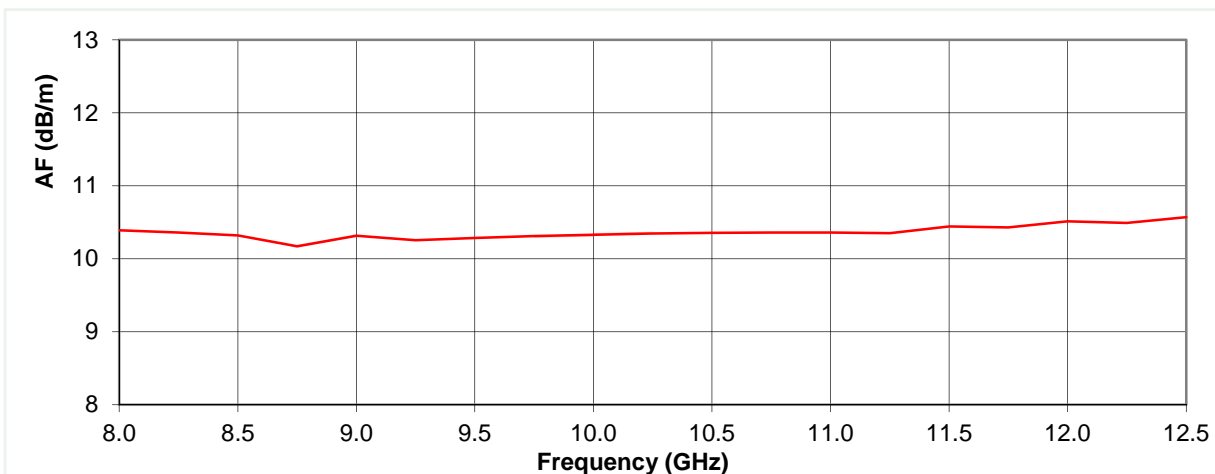
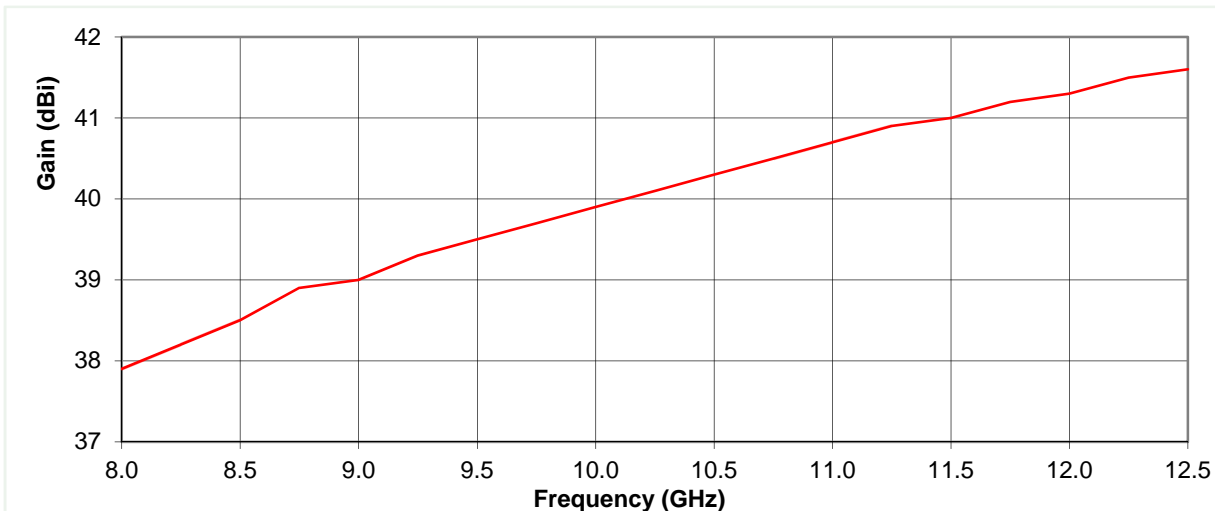


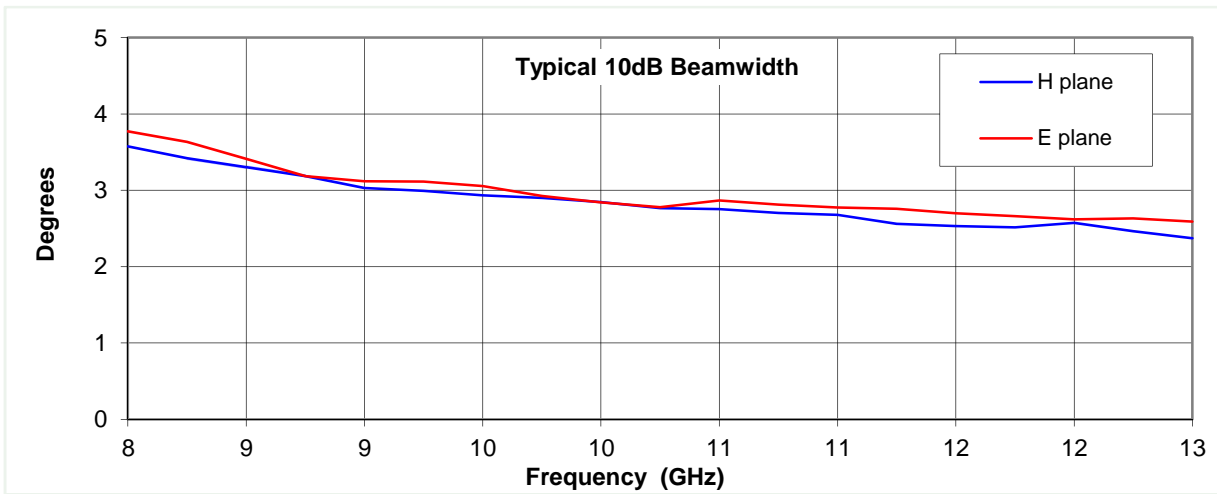
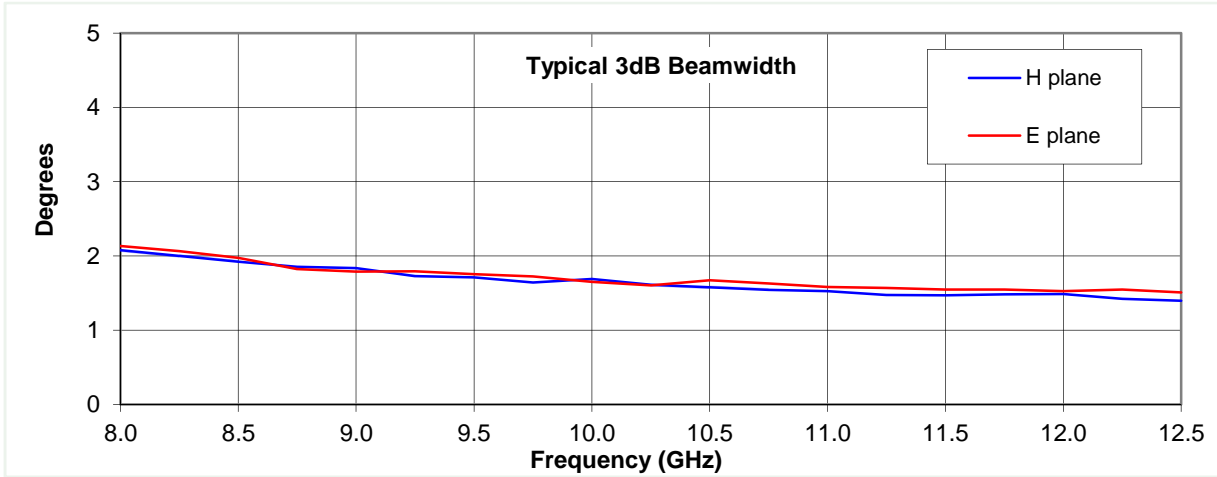
Typical Specification

Frequency	8 to 12.5 GHz
Connector Type	Waveguide 16 Flange -UDR100 (R100 , WR90)
Power Handling	2 kW c.w.
VSWR	Typically < 1.5:1
Gain	37.9 to 41.6 dBi
Antenna Factor	10.2 to 10.6 dB/m
3dB Beamwidth	1 to 2 degrees
10dB Beamwidth	2 to 4 degrees
Weight	12.5 kg nominal
Maximum Size	Reflector diameter 1233 mm
Mounting	8 holes tapped M6 on 125 mm pitch circle diameter
Construction	Aluminium reflector with powdercoat finish. Copper and brass feed, painted.

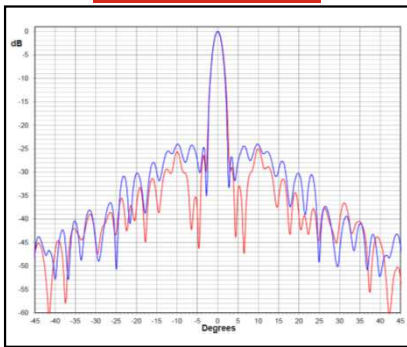
Typical Antenna Gain / Factor

This is calculated by reference to standard gain horn antennas, and cross checked with reference to the antenna beamwidth, with an estimated error of +/- 0.8dB.

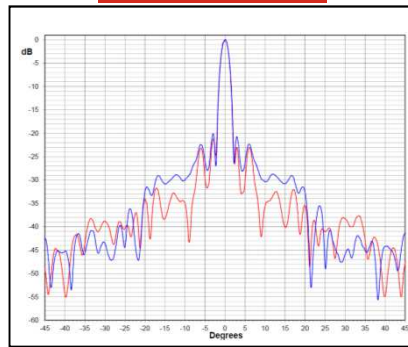




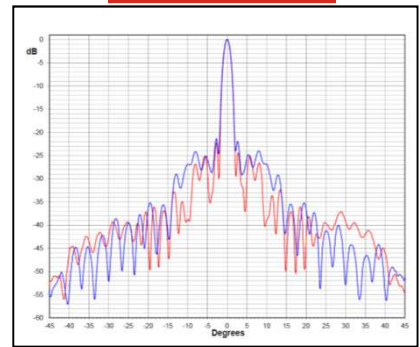
8 GHz



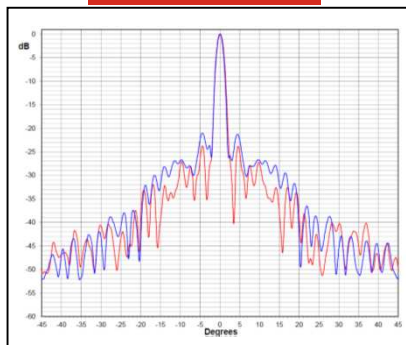
9 GHz



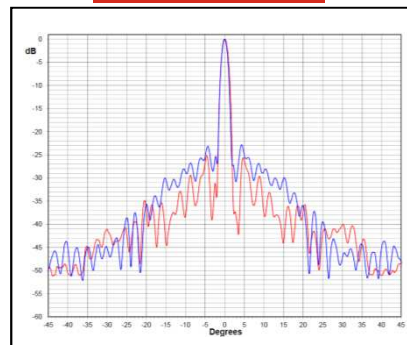
10 GHz



11 GHz



12.5 GHz



Red trace = E-plane, Blue trace = H-plane cut

