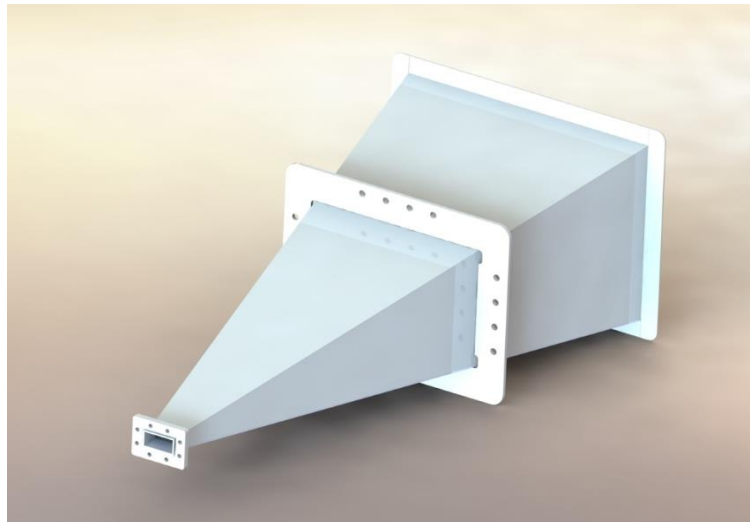


4 - 6 GHz Linearly Polarised 24 dBi Horn Antenna fitted with UDR48 Waveguide Flange

Catalogue number **QSH-SL-4-6-F-24**

Steatite reference **QMS-01063**

Contents **Summary**
Typical Gain / Antenna Factor
Typical Beamwidth / Patterns
VSWR



QQD06-2 V7.3

PDM 26/02/2020 7440

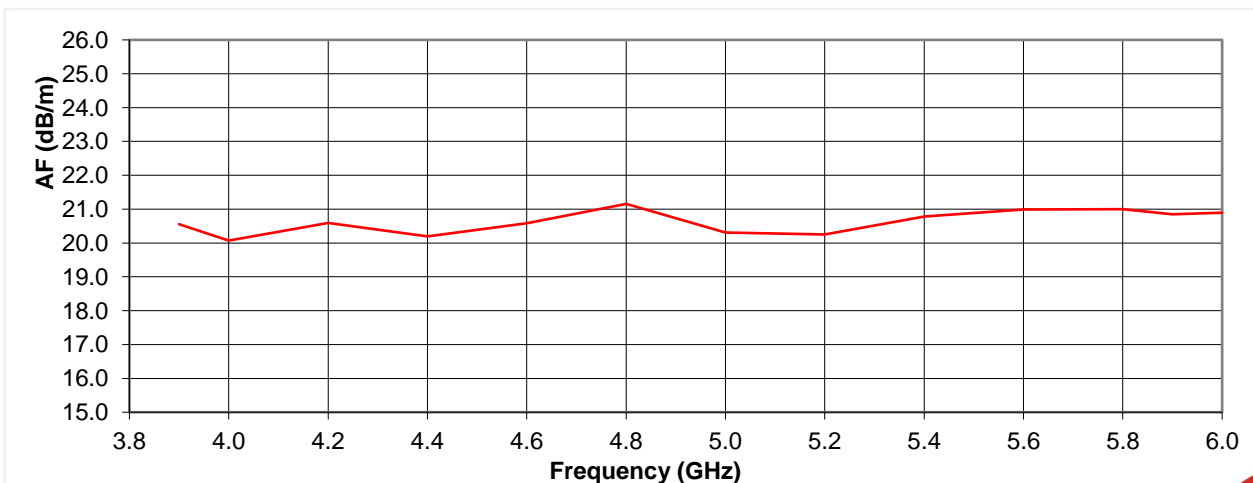
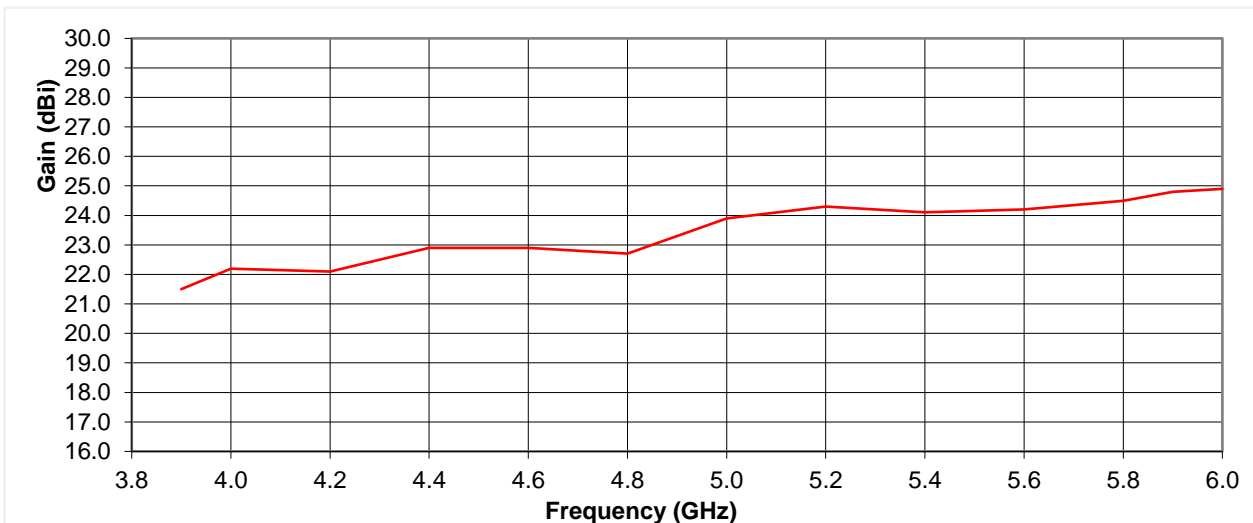


Typical Specification

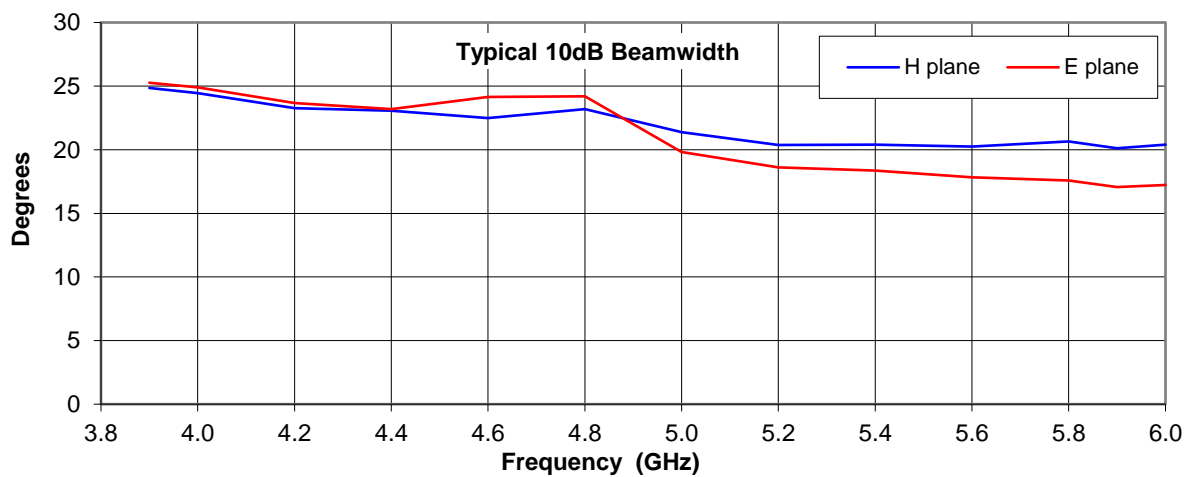
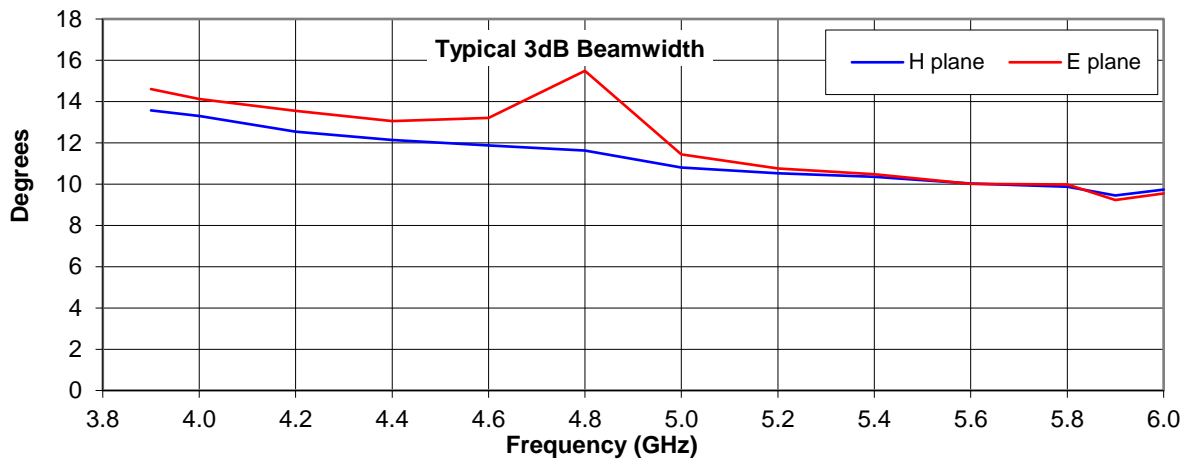
Frequency	3.9 to 6 GHz
Connector Type	Waveguide flange UDR48
Power Handling	1MW peak, 14.5 kW mean
VSWR	<1.2:1
Gain	21.5 to 24.9 dBi
Antenna Factor	20.1 to 21.2 dB/m
3dB Beamwidth	9 to 15 degrees
10dB Beamwidth	17 to 25 degrees
Weight	6.1 kg nominal
Maximum Size	461 x 340 mm external aperture x 1007 mm long
Mounting	16 holes on muont bracket Ø10.5mm thru. See ICD
Construction	Welded aluminium and engineering plastics, powdercoat finish

Typical Antenna Gain / Factor

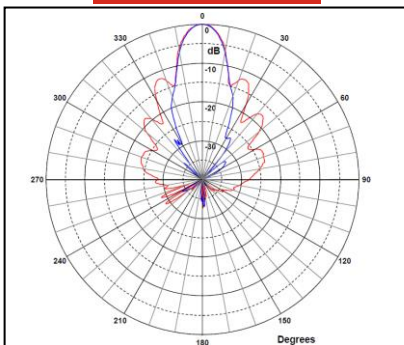
This is calculated by reference to standard gain horn antennas, and cross checked with reference to the antenna beamwidth, with an estimated error of +/- 0.8dB.



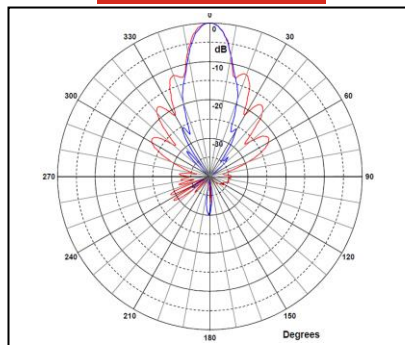
Typical Beamwidth / Radiation Patterns



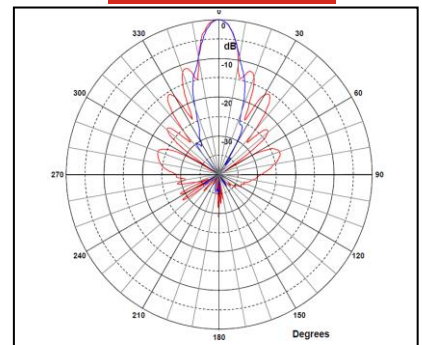
3.9 GHz



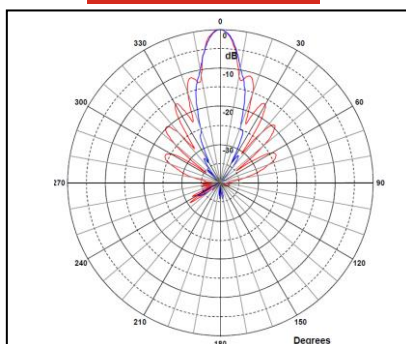
4.4 GHz



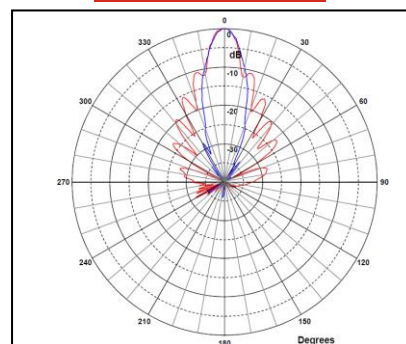
5.0 GHz



5.4 GHz



6.0 GHz



Red trace = E-plane, Blue trace = H-plane cut

