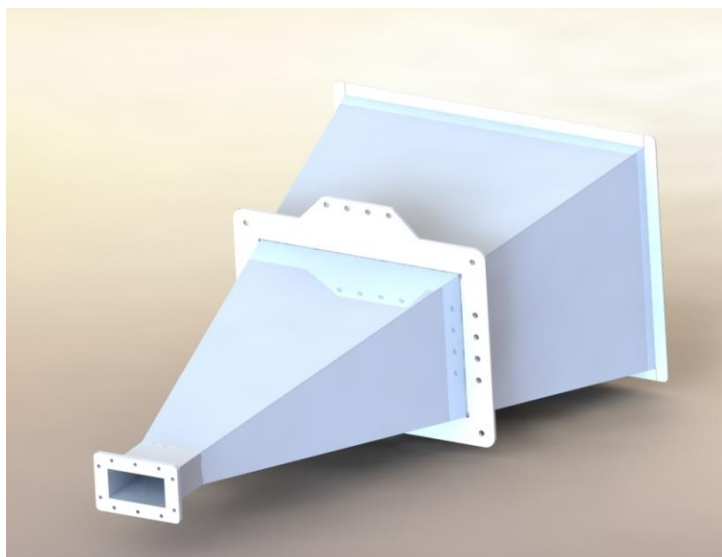


1.7 - 2.6 GHz Linearly Polarised 20 dBi Horn Antenna fitted with a Waveguide Flange

Catalogue number **QSH-SL-1.7-2.6-F-20**

Steatite reference **QMS-01061**

Contents **Summary**
Typical Gain / Antenna Factor
Typical Beamwidth / Patterns
VSWR



QQD06-2 V7.3

PDM 26/02/2020 8937

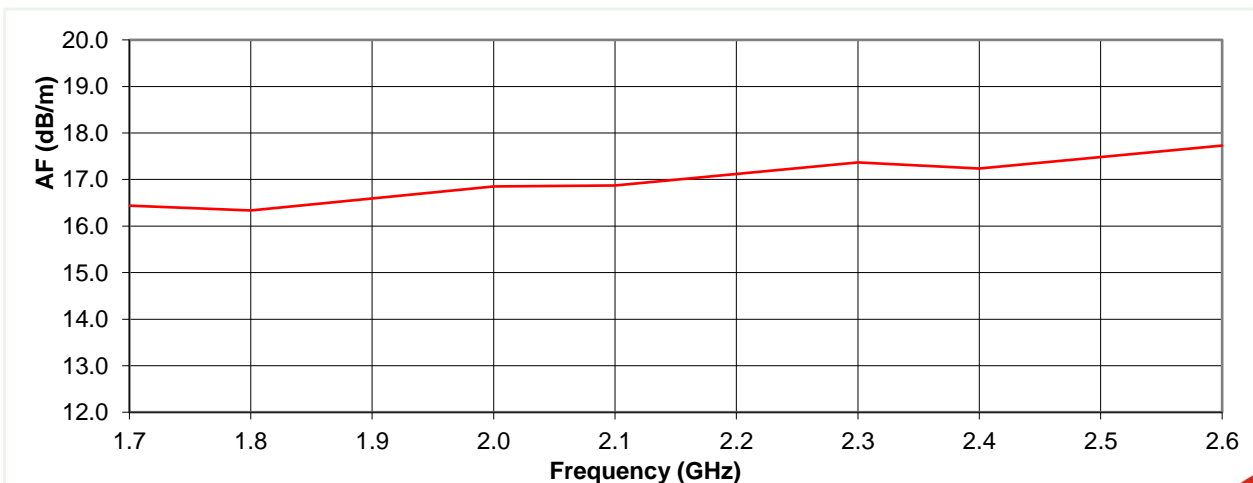
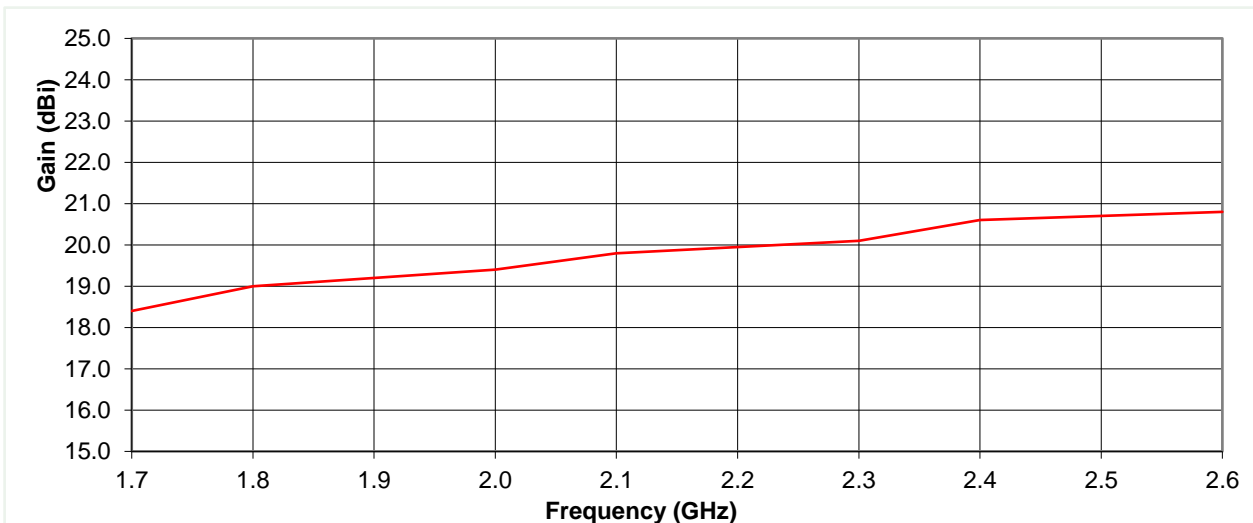


Typical Specification

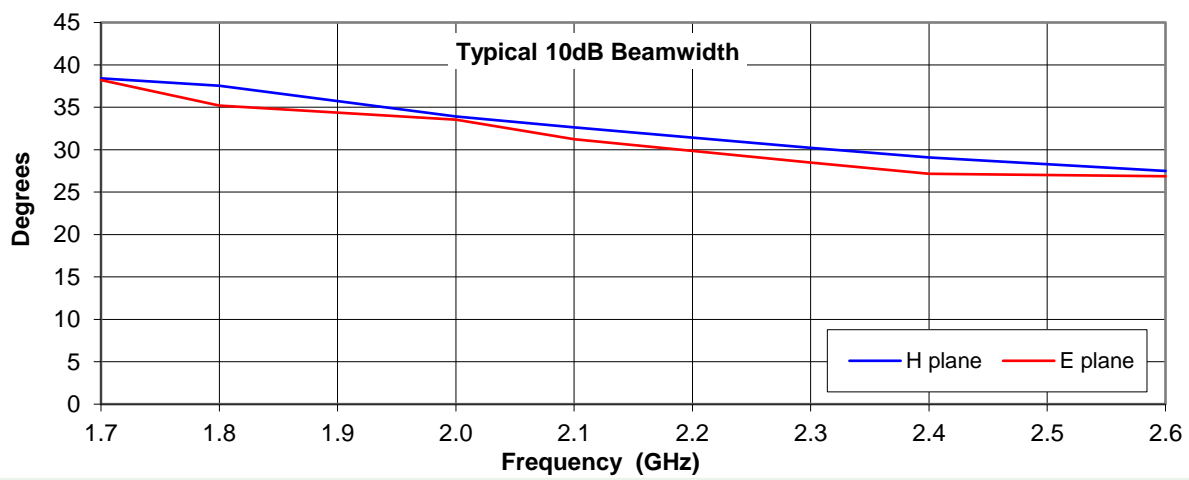
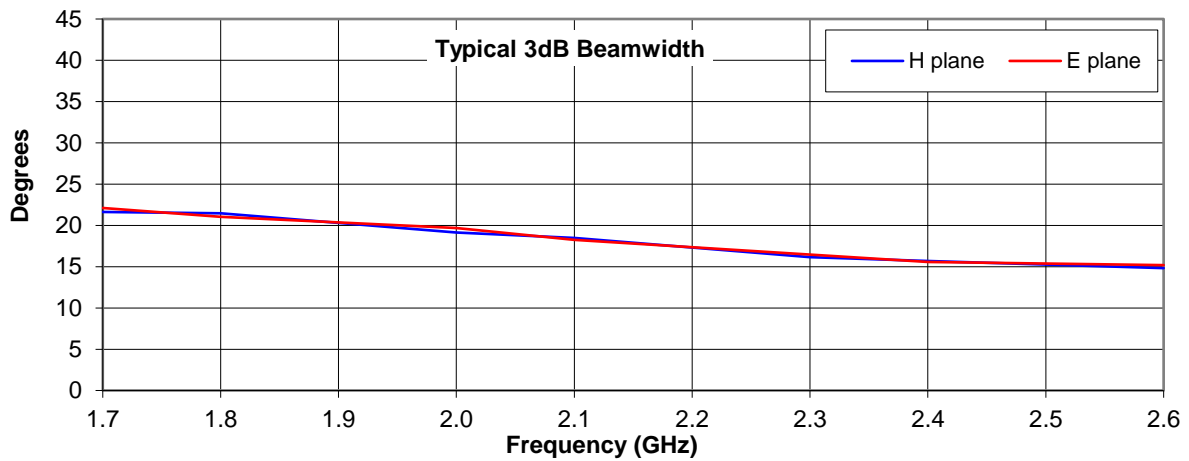
Frequency	1.7 to 2.6 GHz
Connector Type	WG14 Flange
Power Handling	95kW CW at 1 ATM
VSWR	Typically < 1.4 : 1
Gain	18.4 to 20.8 dBi
Antenna Factor	16.3 to 17.7 dB/m
3dB Beamwidth	15 to 22 degrees
10dB Beamwidth	27 to 38 degrees
Weight	11.5kg (Estimated)
Maximum Size	Aperture 622 x 457mm, 1226mm long.
Mounting	Mounting flange with 16 thru holes Ø10.5mm
Construction	Welded aluminium, powder caosted.

Typical Antenna Gain / Factor

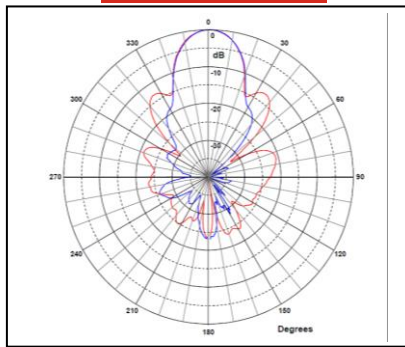
This is calculated by reference to standard gain horn antennas, and cross checked with reference to the antenna beamwidth, with an estimated error of +/- 0.8dB.



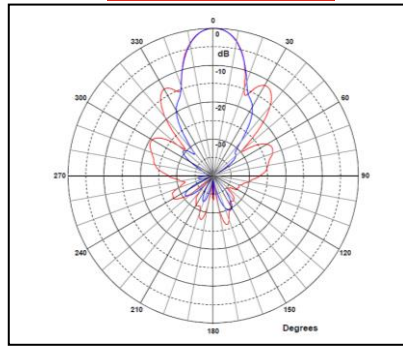
Typical Beamwidth / Radiation Patterns



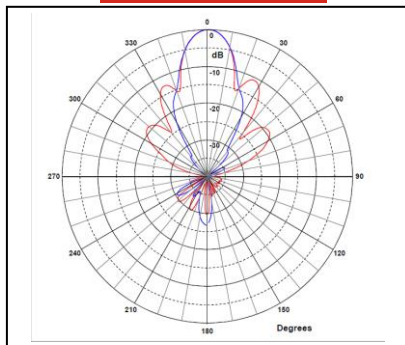
1.7 GHz



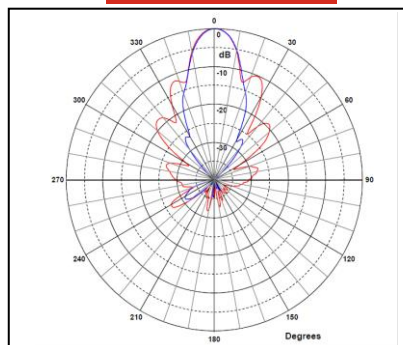
2.0 GHz



2.3 GHz



2.6 GHz



Red trace = E-plane, Blue trace = H-plane cut

