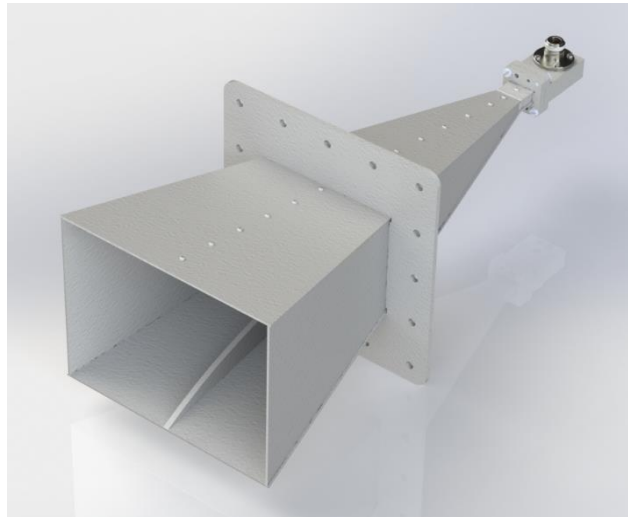


7.5 - 18 GHz Linearly Polarised High Gain Wideband Ridged Horn Antenna fitted with a N type Connector

Catalogue number **QWH-SL-7.5-18-N-HG**

Steatite reference **QMS-01038**

Contents **Summary**
Typical Gain / Antenna Factor
Typical Beamwidth / Patterns

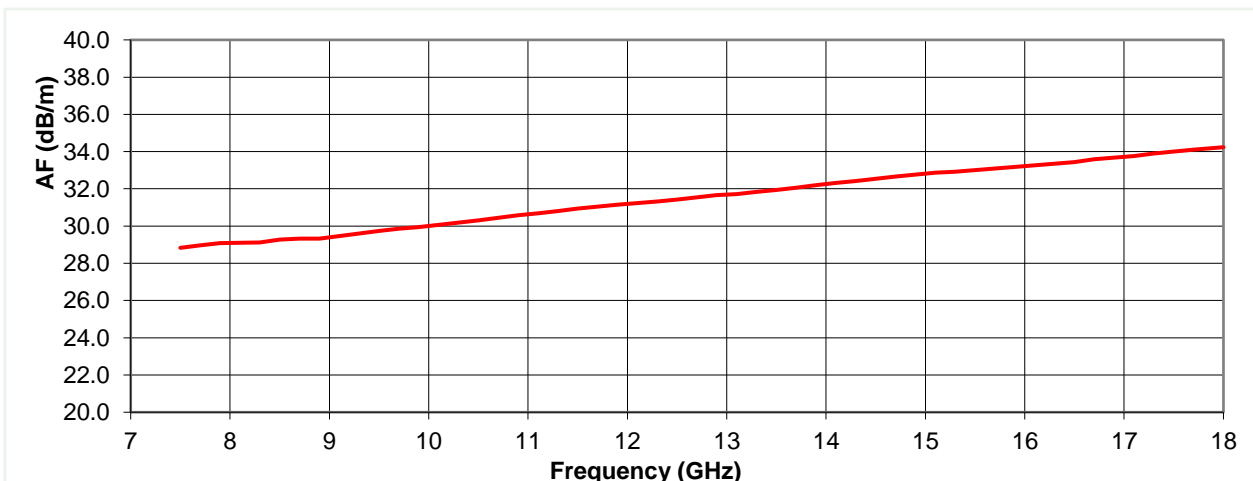
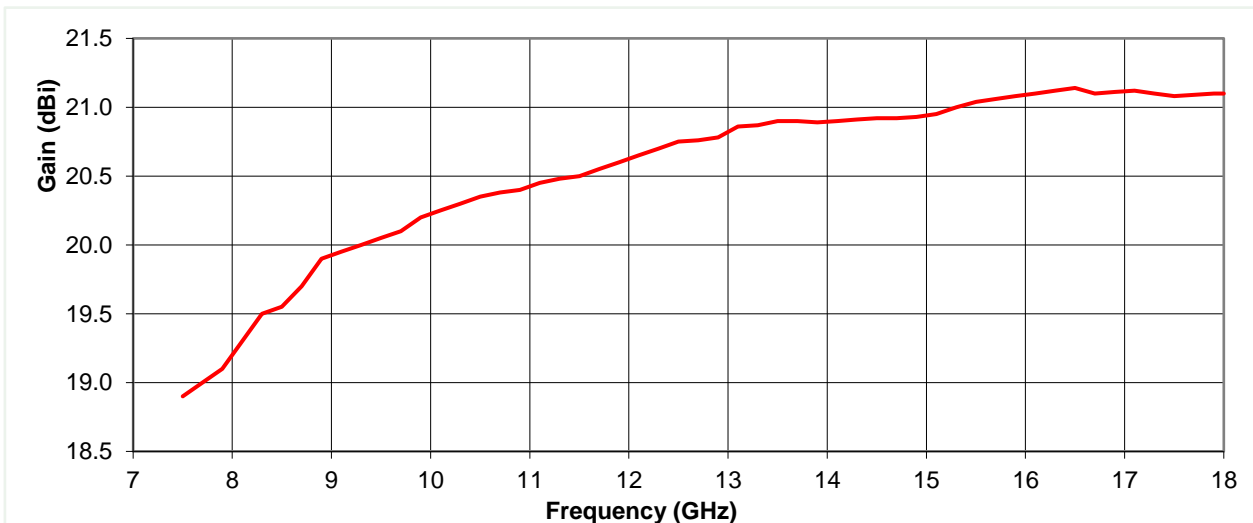


Typical Specification

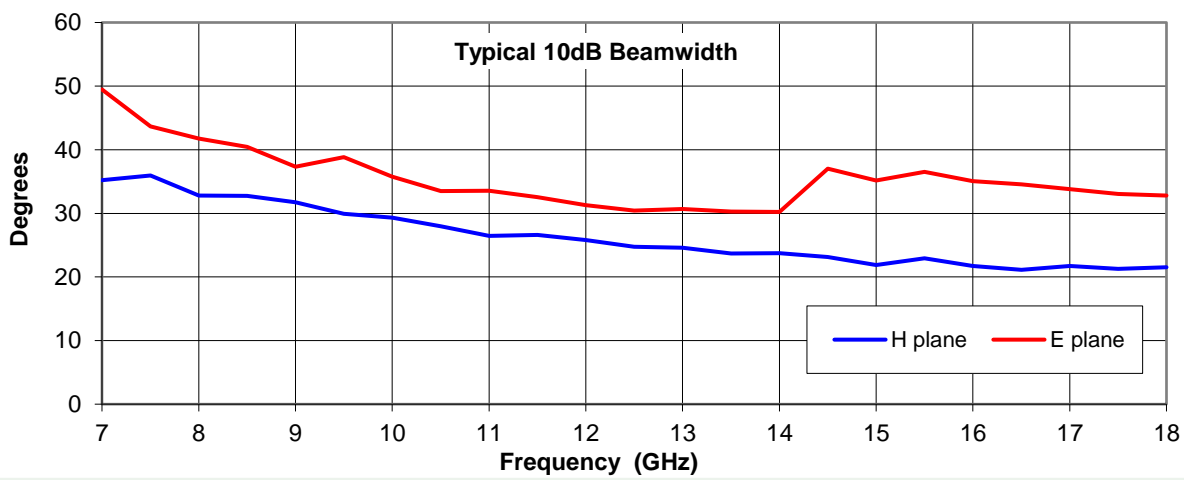
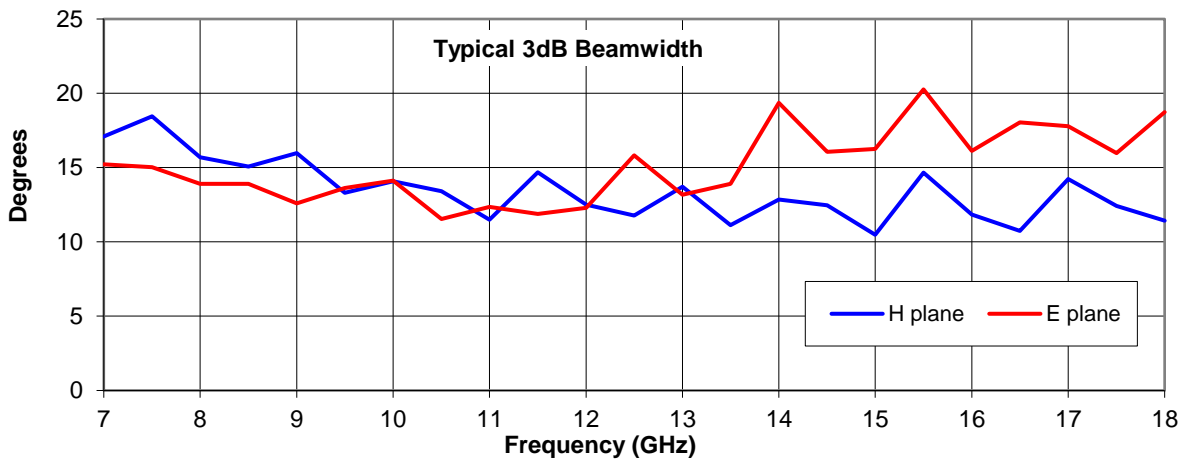
Frequency	7.5 to 18 GHz
Connector Type	N Female
Power Handling	300W CW (12 GHz)
VSWR	<1.5:1 (Typical)
Gain	19.2 to 21.4 dBi
Antenna Factor	47.1 to 55.3 dB/m
3dB Beamwidth	10 to 20 degrees
10dB Beamwidth	21 to 44 degrees
Weight	3.5 kg nominal
Maximum Size	186 mm x 144 mm external aperture x 476 mm long
Mounting	Wrap-around mounting flange (See ICD)
Construction	Soldered brass, painted.

Typical Antenna Gain / Factor

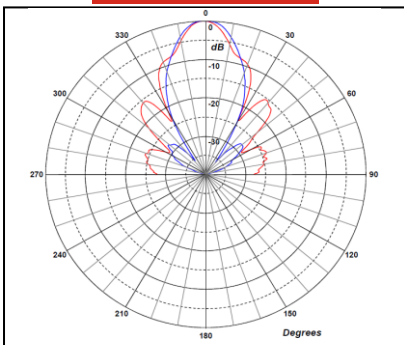
This is calculated by reference to standard gain horn antennas, and cross checked with reference to the antenna beamwidth, with an estimated error of +/- 0.8dB.



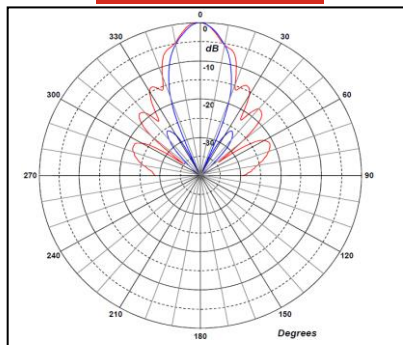
Typical Beamwidth / Radiation Patterns



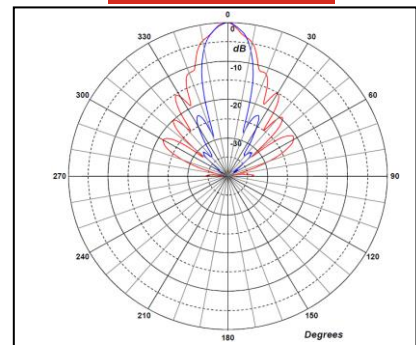
7.5 GHz



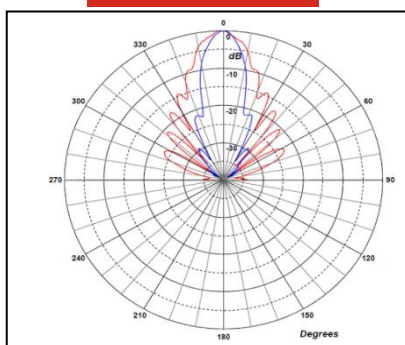
10 GHz



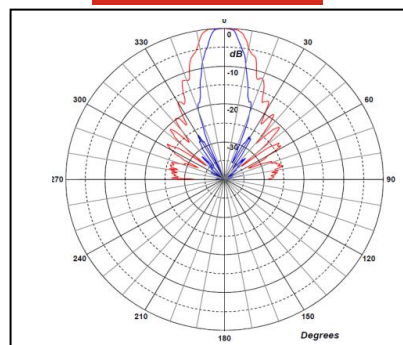
13 GHz



15 GHz



18 GHz



Red trace = E-plane, Blue trace = H-plane cut