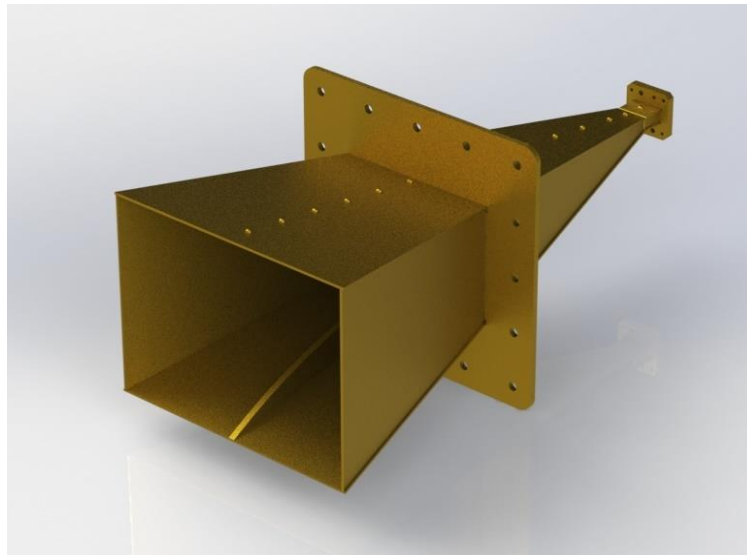


7.5 - 18 GHz Linearly Polarised High Gain Wideband Ridged Horn Antenna fitted with a Waveguide Flange

Catalogue number **QWH-SL-7.5-18-F-HG**

Steatite reference **QMS-00932**

Contents **Summary**
Typical Gain / Antenna Factor
Typical Beamwidth / Patterns
VSWR

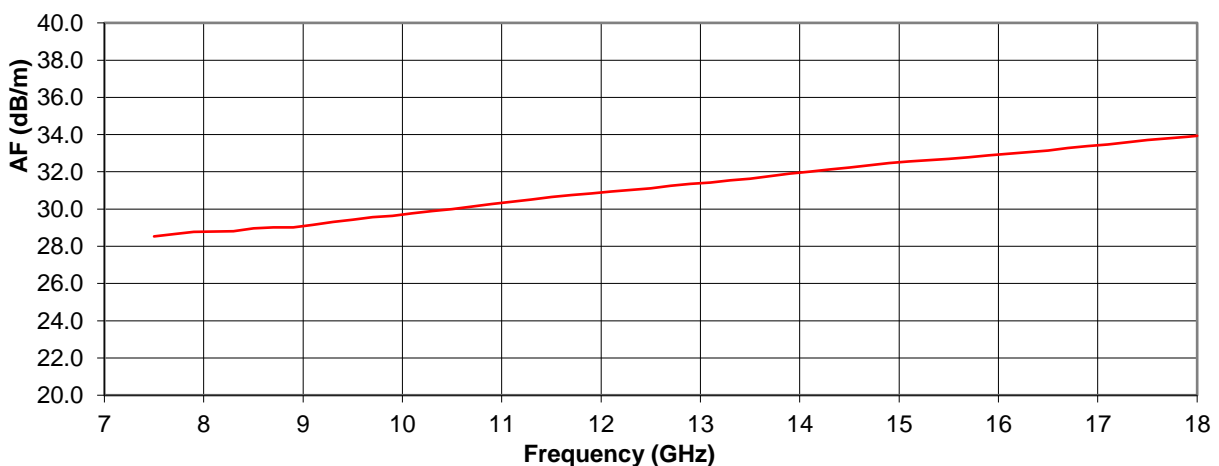
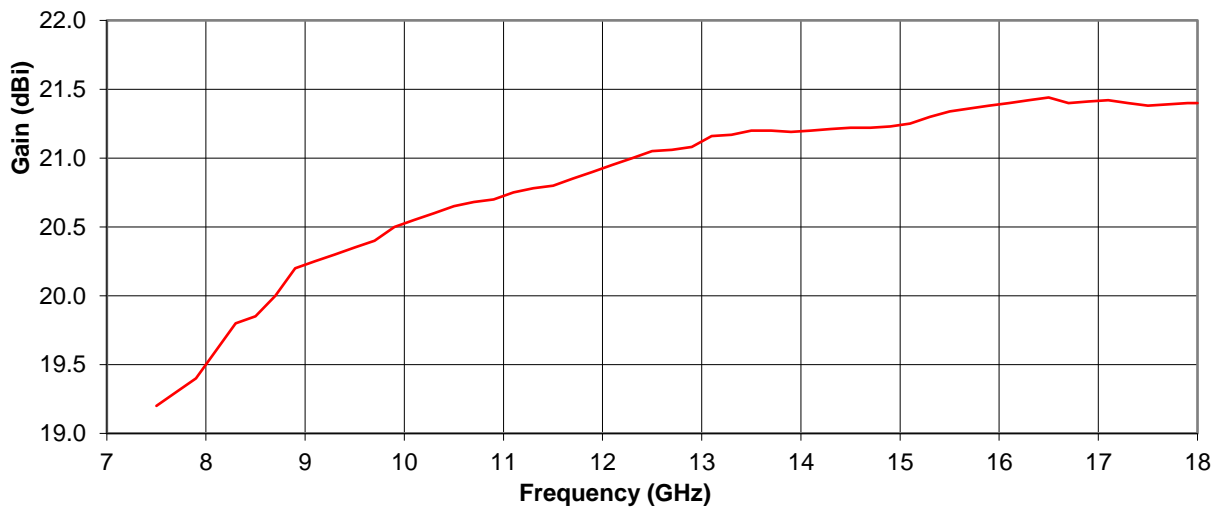


Typical Specification

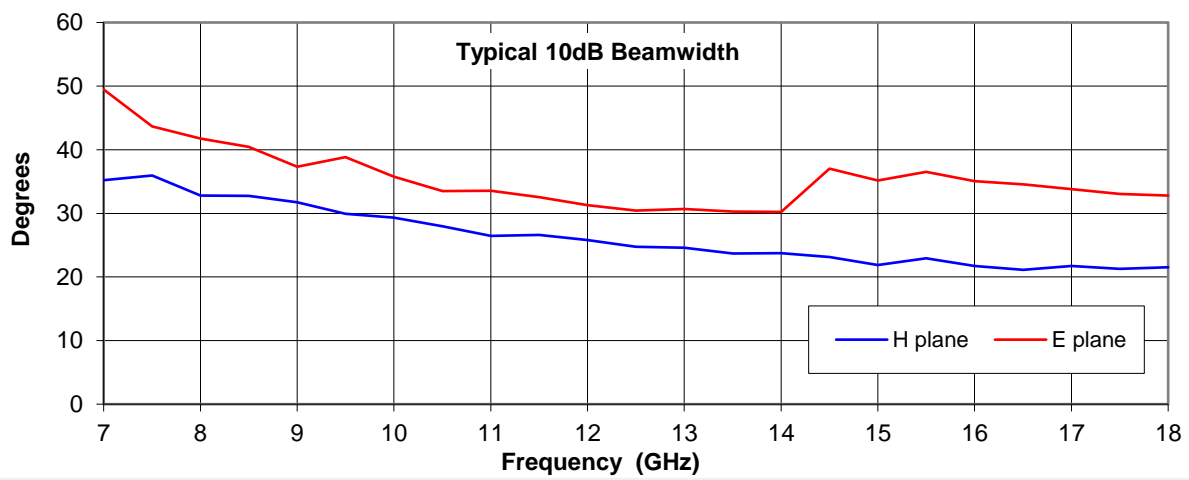
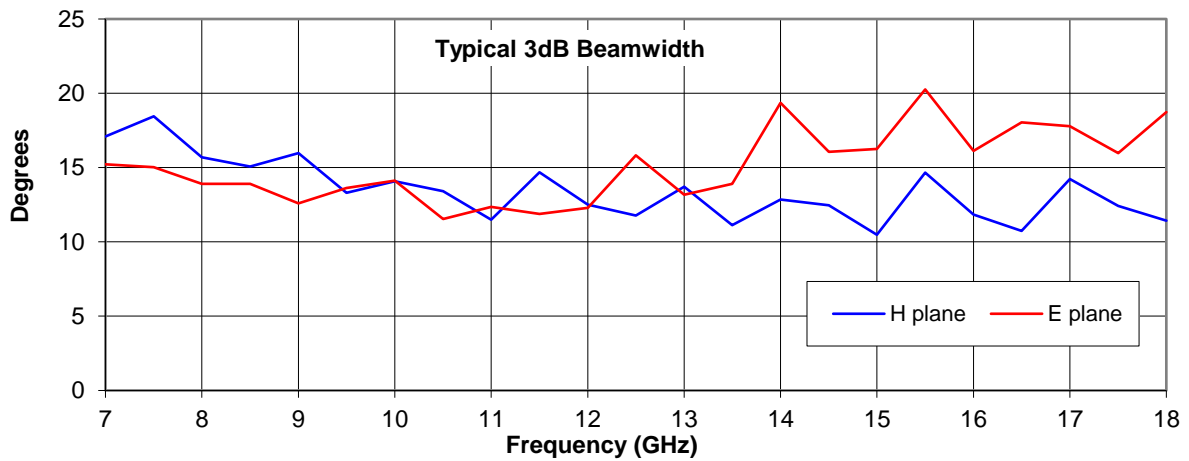
Frequency	7.5 to 18 GHz
Connector Type	WRD750 Flange
Power Handling	2 kW c.w. 20 kW peak
VSWR	< 1.3 :1
Gain	19.2 to 21.4 dBi
Antenna Factor	47.1 to 55.3 dB/m
3dB Beamwidth	10 to 20 degrees
10dB Beamwidth	21 to 44 degrees
Weight	3.2 kg nominal
Maximum Size	186 mm x 144 mm external aperture x 425 mm long
Mounting	Wrap-around mounting flange (See ICD)
Construction	Soldered brass, painted.

Typical Antenna Gain / Factor

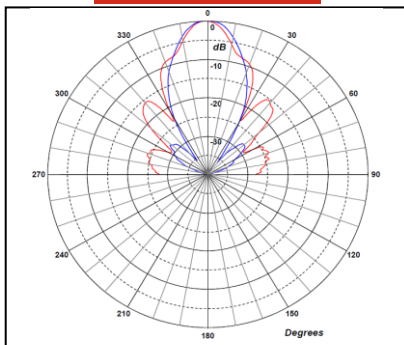
This is calculated by reference to standard gain horn antennas, and cross checked with reference to the antenna beamwidth, with an estimated error of +/- 0.8dB.



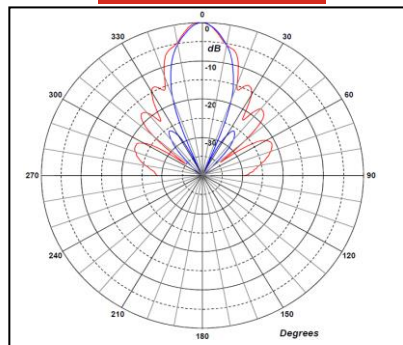
Typical Beamwidth / Radiation Patterns



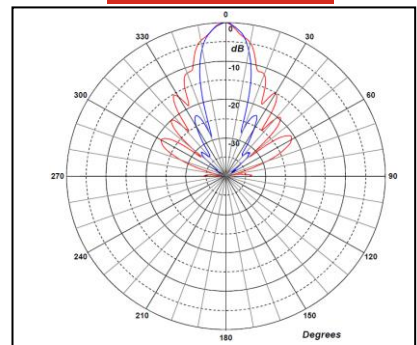
7.5 GHz



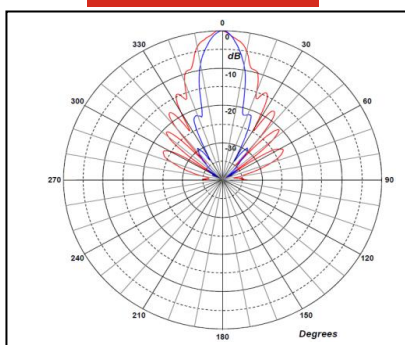
10 GHz



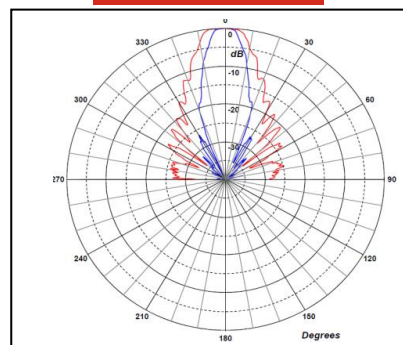
13 GHz



15 GHz



18 GHz



Red trace = E-plane, Blue trace = H-plane cut