

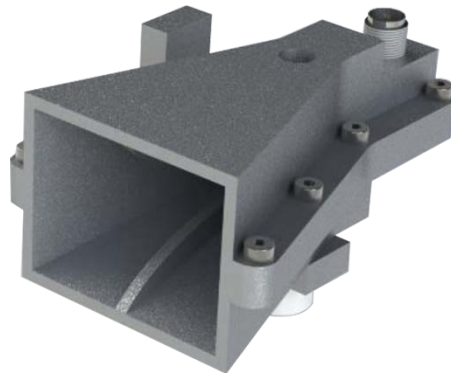


18 - 40 GHz Linearly Polarised Wideband Ridged Horn Antenna fitted with a K type Connector

Catalogue number **QWH-SL-18-40-K-SG**

Q-par reference **QMS-00910**

Contents **Summary**
Typical Gain / Antenna Factor
Typical Beamwidth / Patterns
VSWR

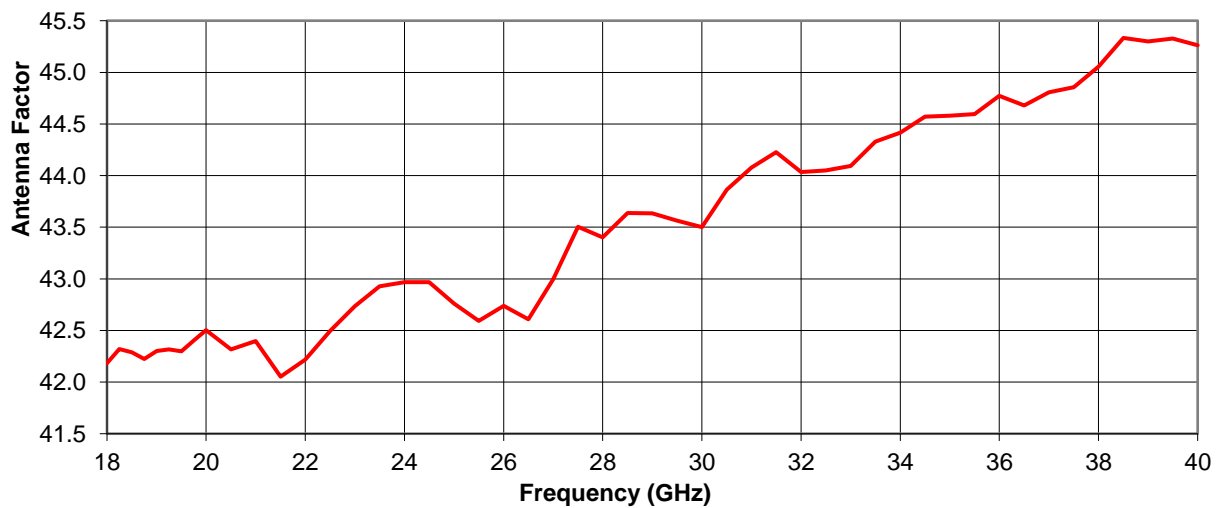
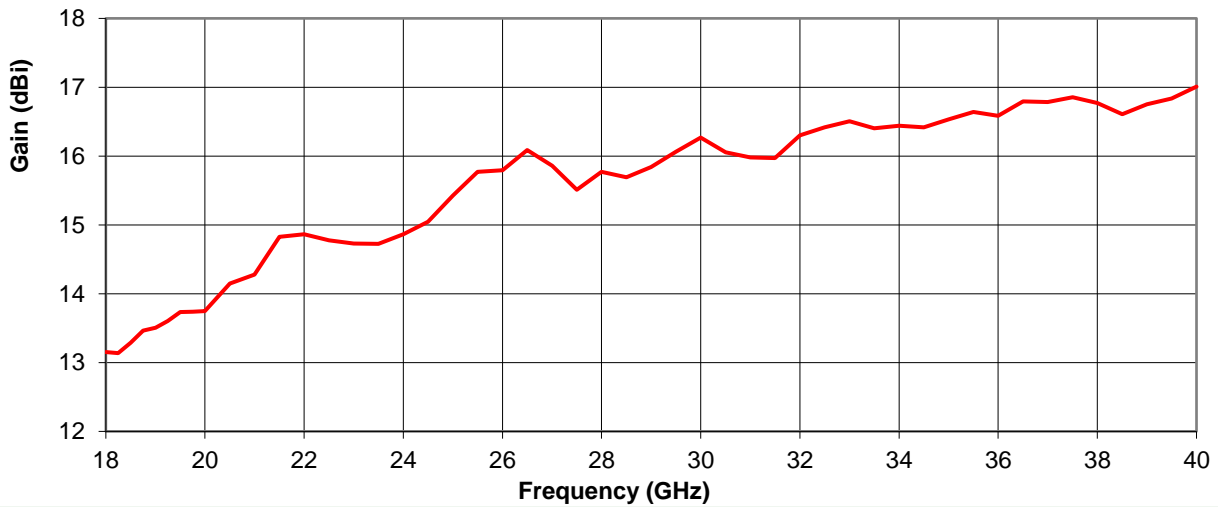


Typical Specification

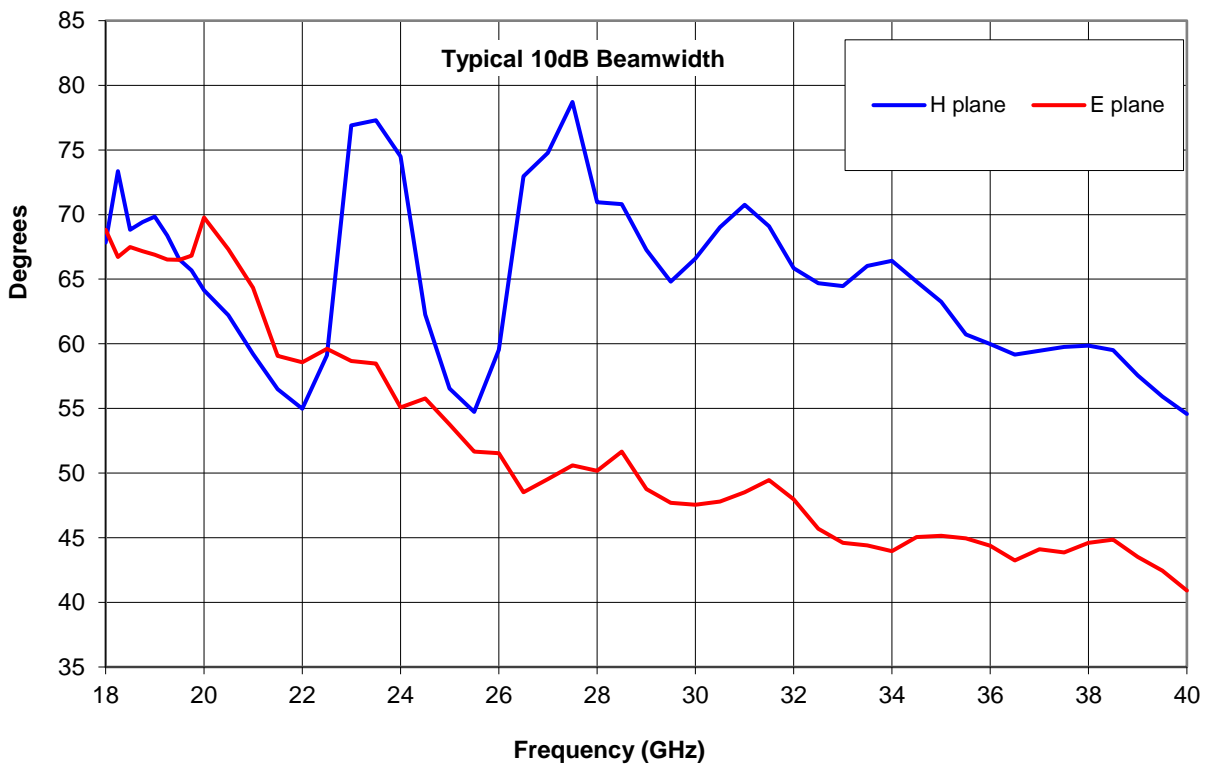
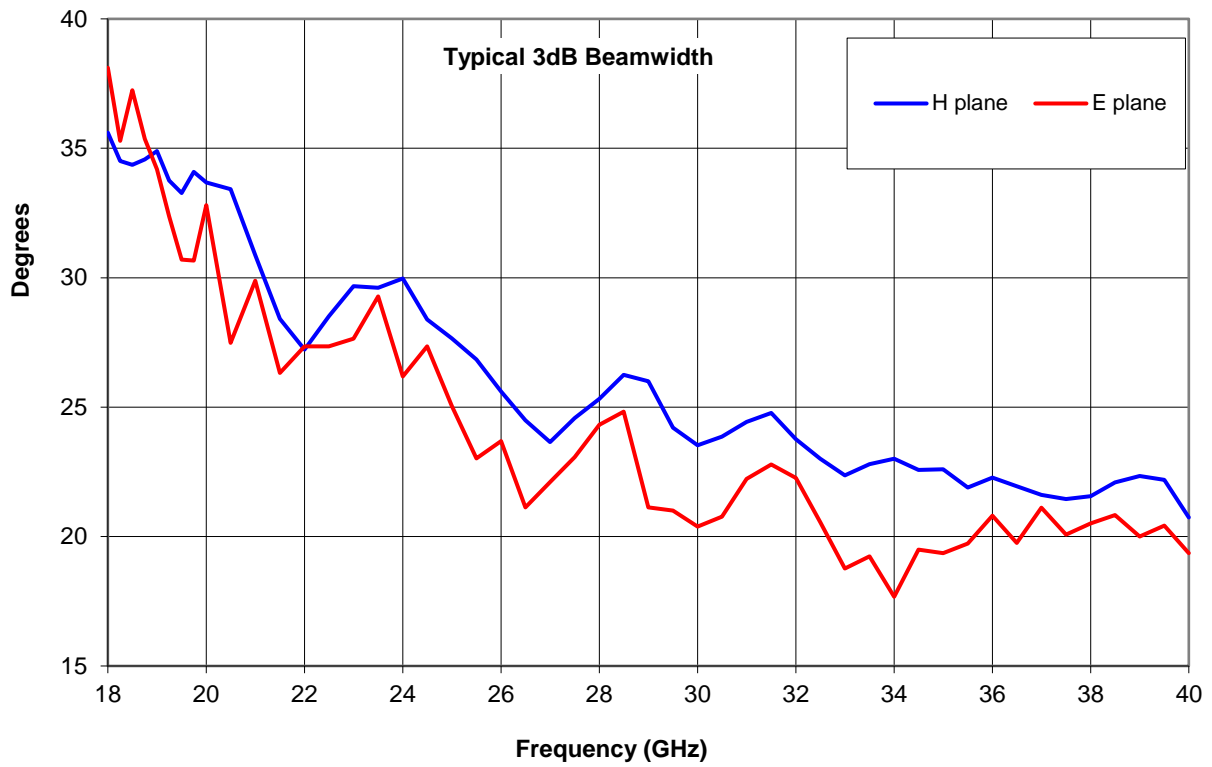
Frequency	18 to 40 GHz
Connector Type	2.92mm (K-Type)
Power Handling	20 Watt
VSWR	Typically <1.7:1
Gain	13.1 to 17 dBi
Antenna Factor	42.1 to 45.3 dB/m
3dB Beamwidth	18 to 38 degrees
10dB Beamwidth	41 to 79 degrees
Weight	75 g nominal
Maximum Size	35 mm x 28 mm Aperture x 62 mm Length
Mounting	Mounting bracket with a 1/4-20 Mounting Hole & SHC Screw)
Construction	Aluminium Horn and Transition

Typical Antenna Gain / Antenna Factor

This is calculated by reference to standard gain horn antennas, and cross checked with reference to the antenna beamwidth, with an estimated error of +/- 0.8dB.



Typical Antenna Beamwidths

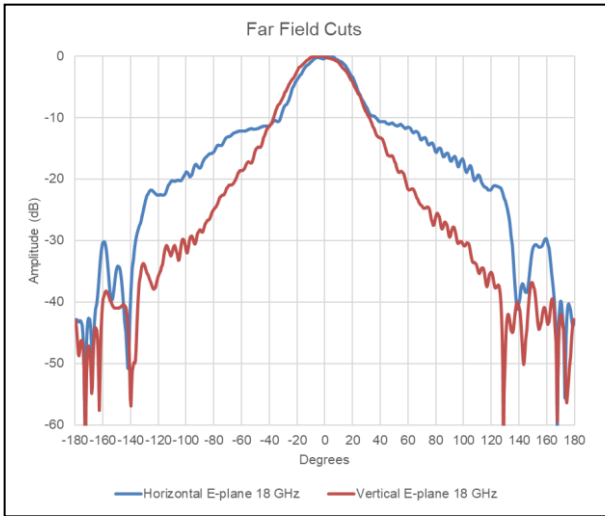


Steatite Antennas reserve the right to change and/or update this specification whereby it is deemed that this would improve either the production and/or performance specification/parameters of this antenna.

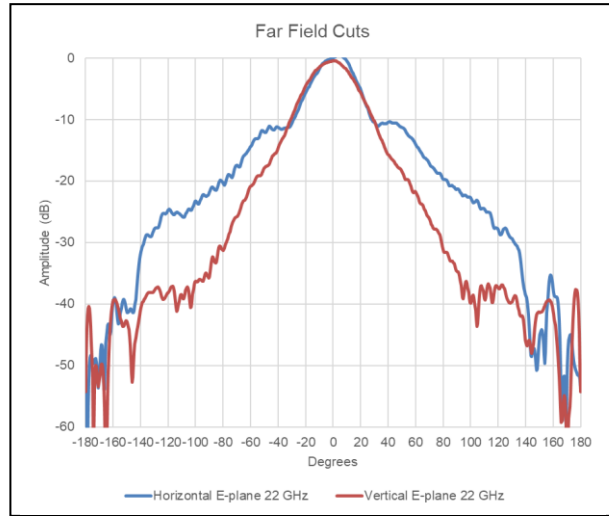
Information herein should not be disclosed to a third party without the prior written consent of Steatite Antennas.

Typical Radiation Patterns

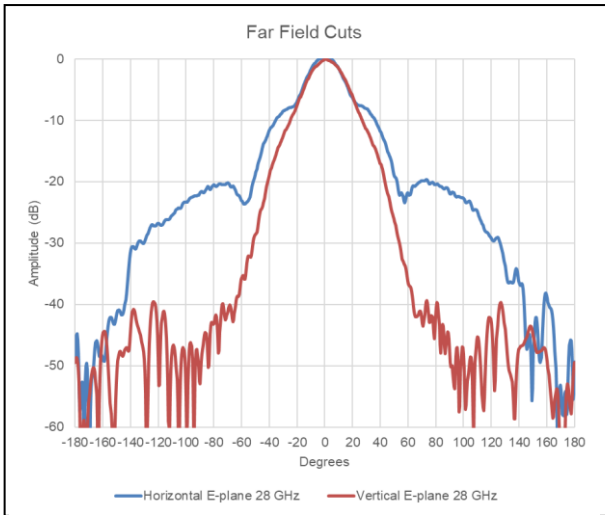
18 GHz



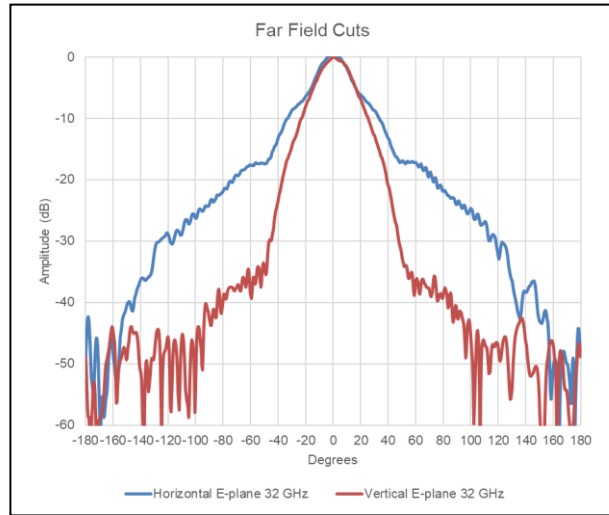
22 GHz



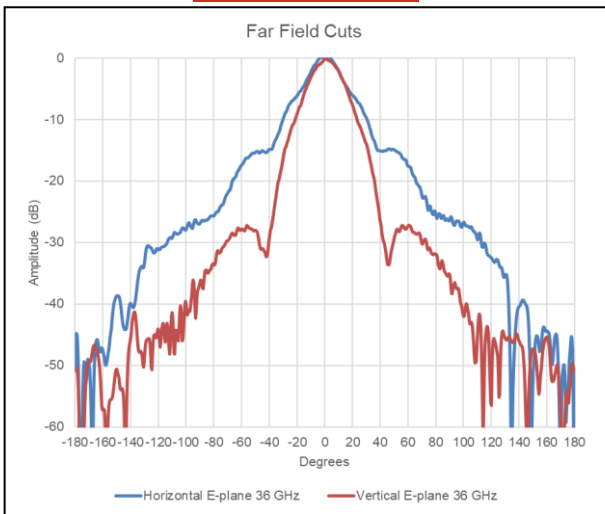
28 GHz



32 GHz



36 GHz



40 GHz

