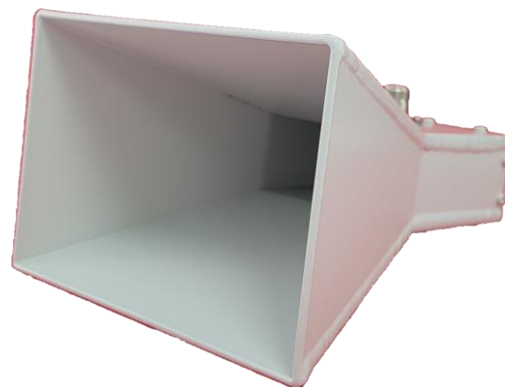


2 - 4 GHz Linearly Polarised Wideband 10 dBi Horn fitted with an N Type Connector

Catalogue number **QWH-SL-2-4-N-10**

Steatite reference **QMS-00909**

Contents **Summary**
Typical Gain / Antenna Factor
Typical Beamwidth / Patterns
VSWR

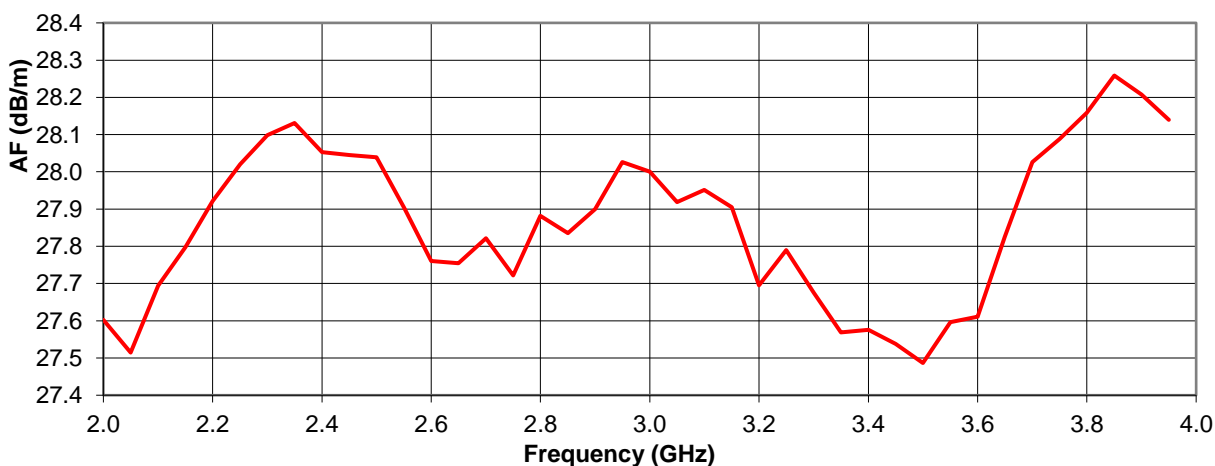
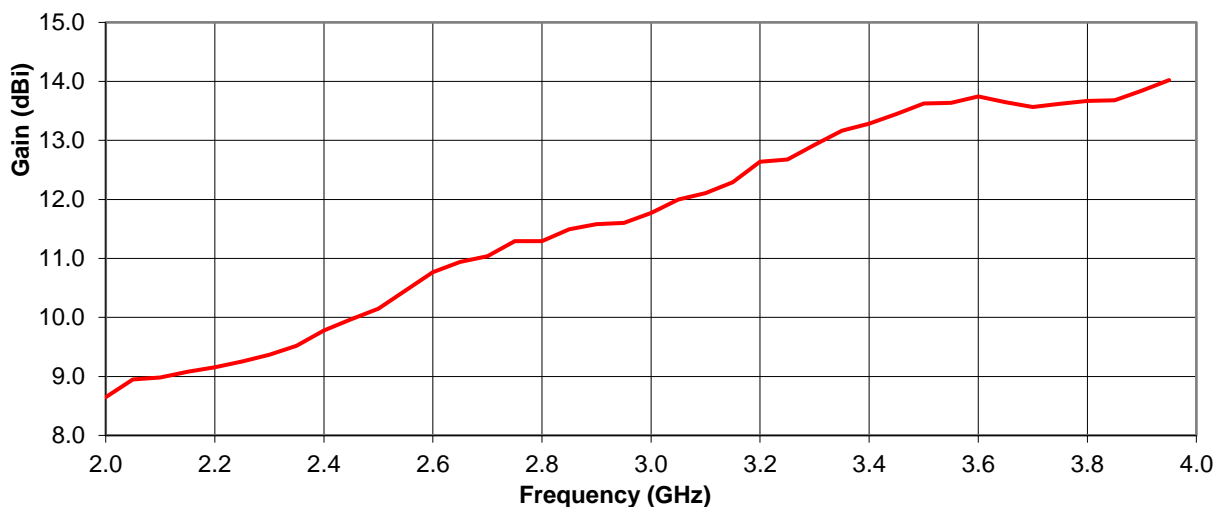


Typical Specification

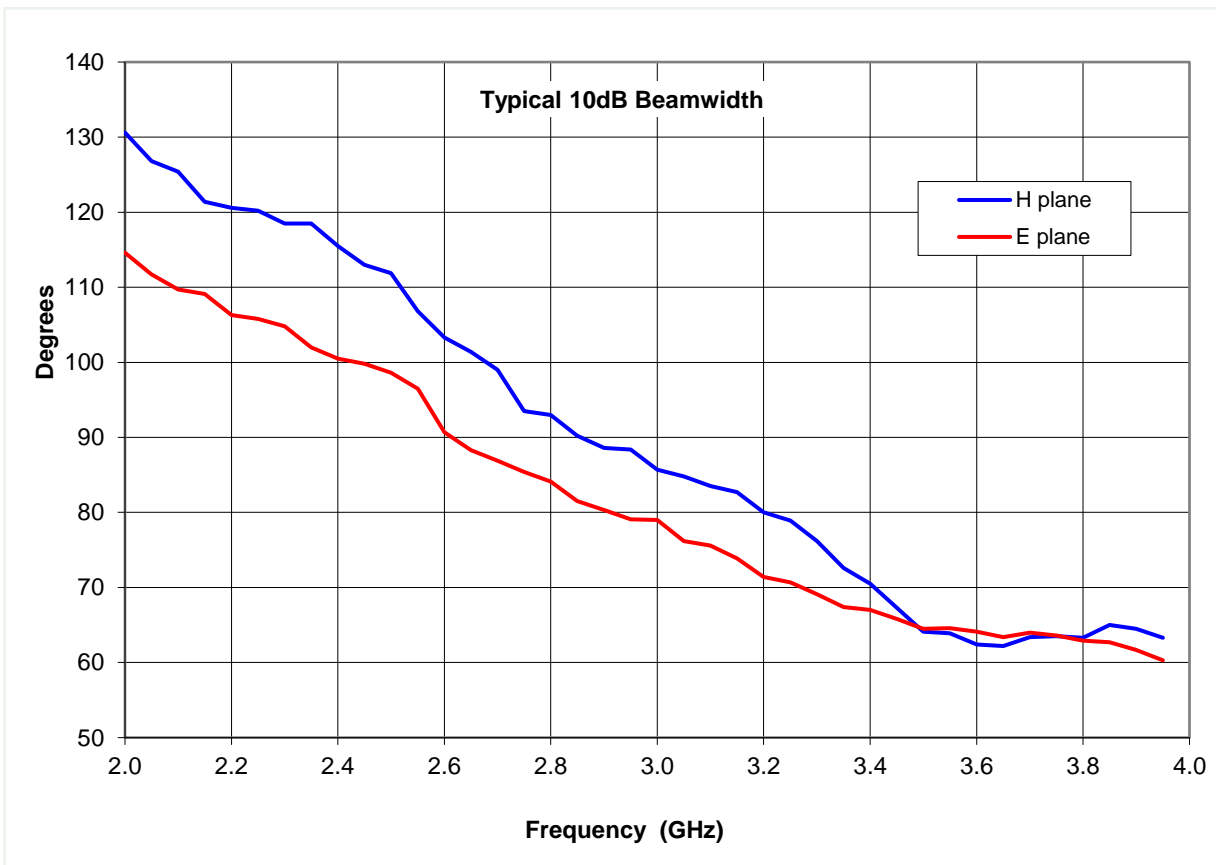
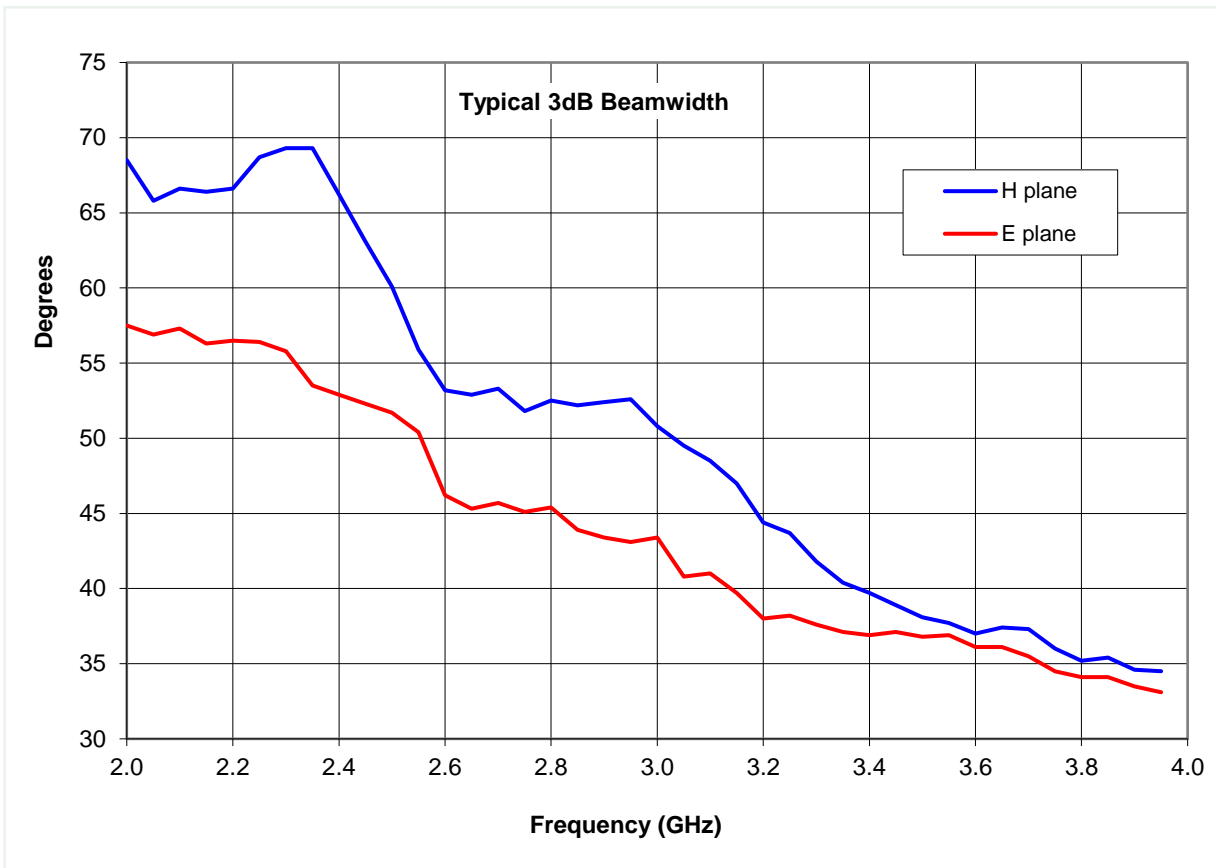
Frequency	2 to 4 GHz
Connector Type	N Type Female
Power Handling	50W CW
VSWR	< 1.5:1 (Typical)
Gain	8.6 to 14 dBi
Antenna Factor	27.5 to 28.3 dB/m
3dB Beamwidth	33 to 69 degrees
10dB Beamwidth	60 to 131 degrees
Weight	700 g nominal
Maximum Size	Maximum aperture size of 162 x 116 mm and length 210mm
Mounting	4 x M5 6mm depth fixings spaced 40 and 70.7 mm apart. Torque 5.0 ±0.8 Nm
Construction	Aluminium construction

Typical Antenna Gain / Factor

This is calculated by reference to standard gain horn antennas, and cross checked with reference to the antenna beamwidth, with an estimated error of +/- 0.8dB.

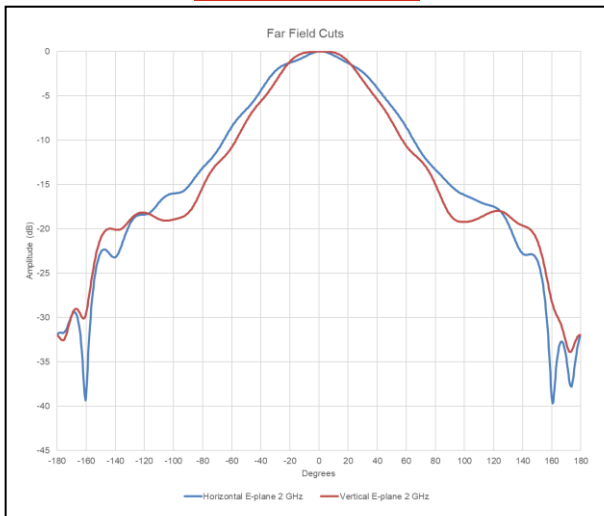


Typical Beamwidth

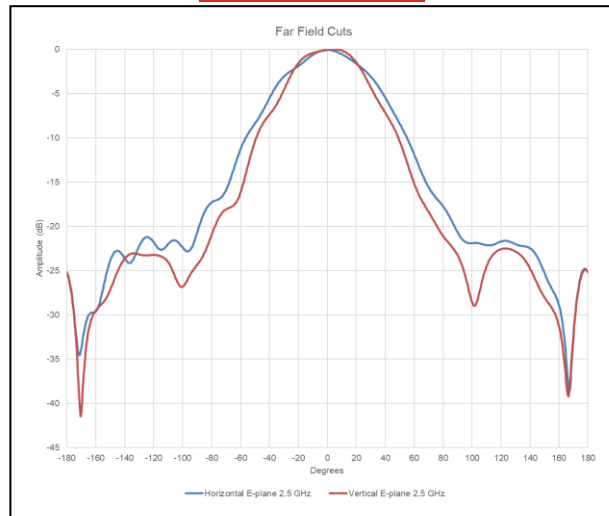


Typical Radiation Patterns

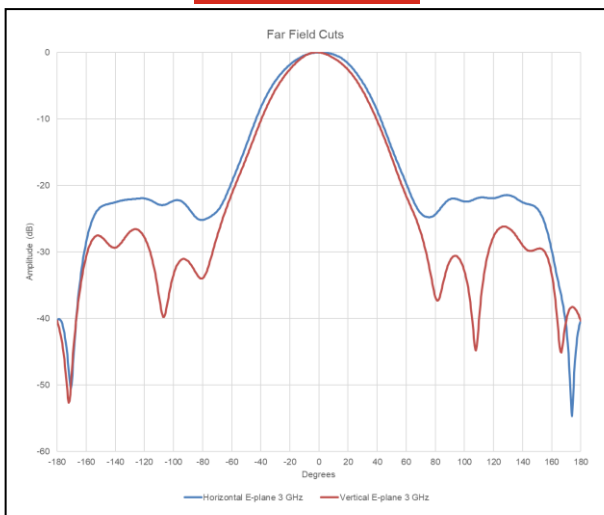
2 GHz



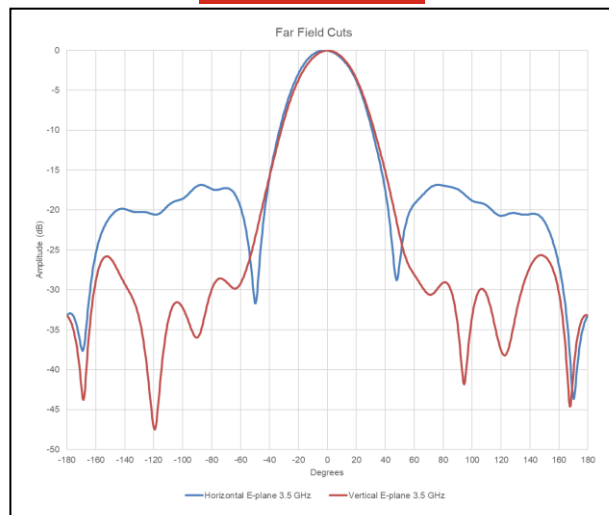
2.5 GHz



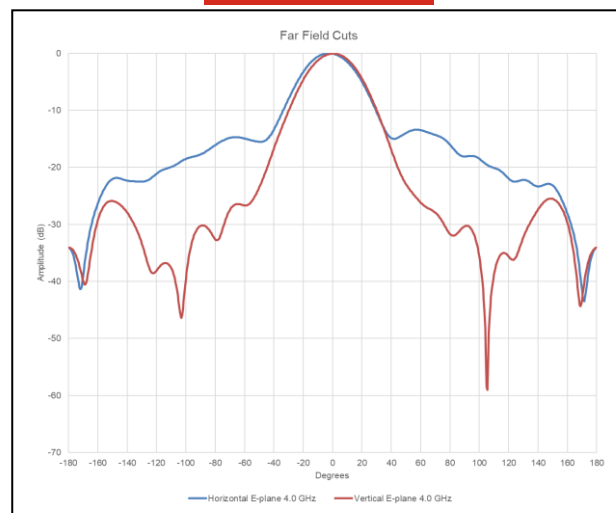
3 GHz



3.5 GHz



4 GHz



Red trace = E-plane, Blue trace = H-plane cut