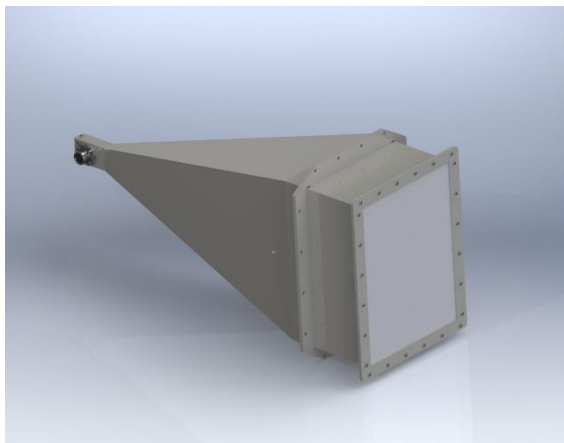


# 4 - 6 GHz Linearly Polarised 22 dBi Lensed Horn Antenna fitted with an 7:16 DIN type Connector

Catalogue number **QSH-SL-4-6-A-22-R**

Q-par reference **QMS-00891**

Contents **Summary**  
**Typical Gain / Antenna Factor**  
**Typical Beamwidth**  
**VSWR**



## Typical Specification - at 1 metre

<b>Frequency</b>	4 to 6 GHz
<b>Connector Type</b>	SC jack
<b>Power Handling</b>	300 W c.w. 10 kW peak.
<b>VSWR</b>	Typical < 1.5 : 1      2 : 1 maximum.
<b>Gain</b>	21.1 to 22.7 dBi
<b>Antenna Factor</b>	21.2 to 23.1 dB/m
<b>3dB Beamwidth</b>	12 to 15 degrees
<b>Weight</b>	5 kg nominal
<b>Maximum Size</b>	450 x 336 mm aperture x 891 mm long
<b>Mounting</b>	Wrap around flange. Mounting brackets fitted on two faces above centre of gravity.
<b>Construction</b>	Stainless steel, aluminium and engineering plastics.

## Typical Antenna Gain / Factor and 3dB Beamwidth - at 1 metre

This is calculated by reference to standard gain horn antennas, and cross checked with reference to the antenna beamwidth, with an estimated error of +/- 0.8dB.

