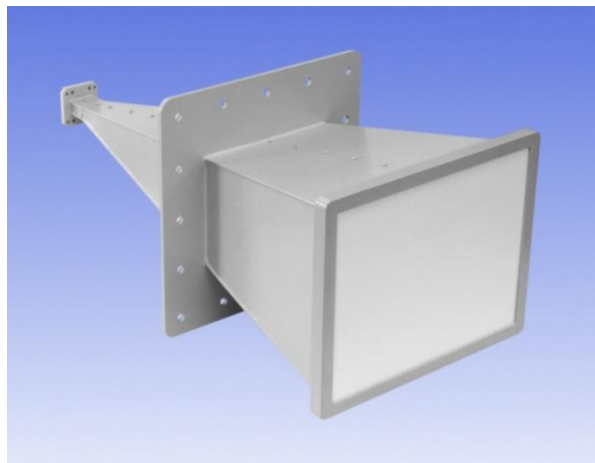


6.5 - 18 GHz Linearly Polarised High gain Wideband Ridged Horn Antenna fitted with a Waveguide Flange and a Radome

Catalogue number **QWH-SL-6.5-18-F-HG-R**

Q-par reference **QMS-00827**

Contents **Summary**
Typical Gain / Antenna Factor
Typical Beamwidth / Patterns
VSWR

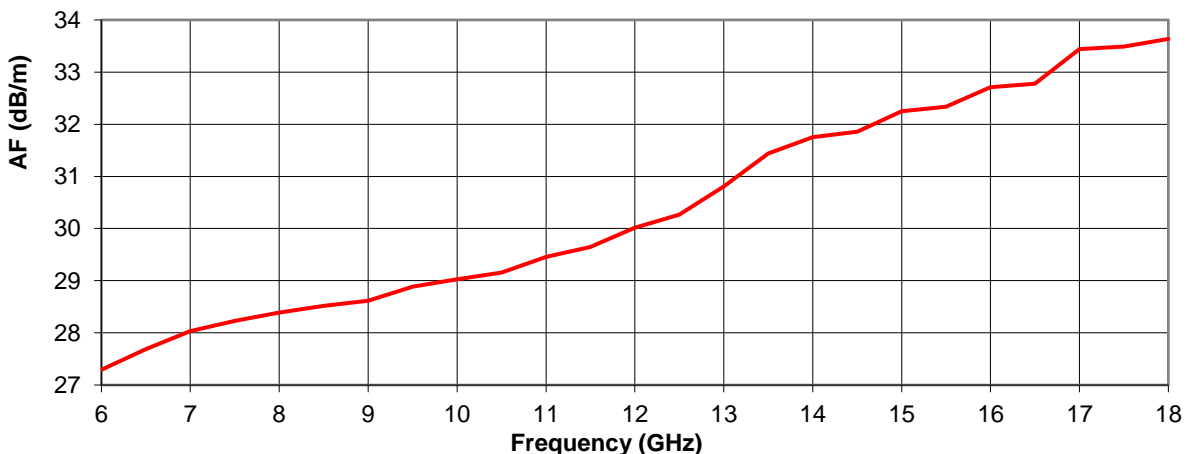
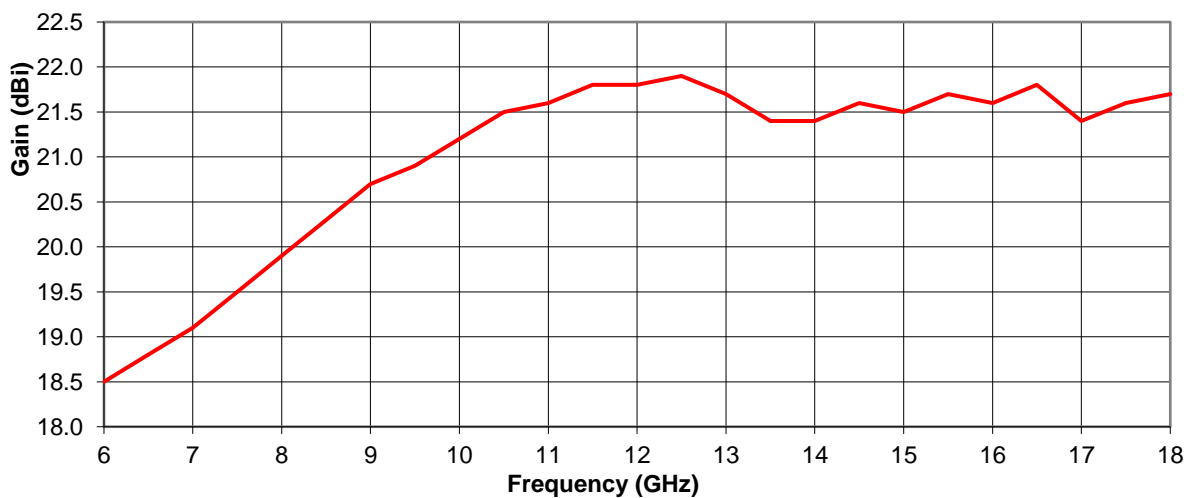


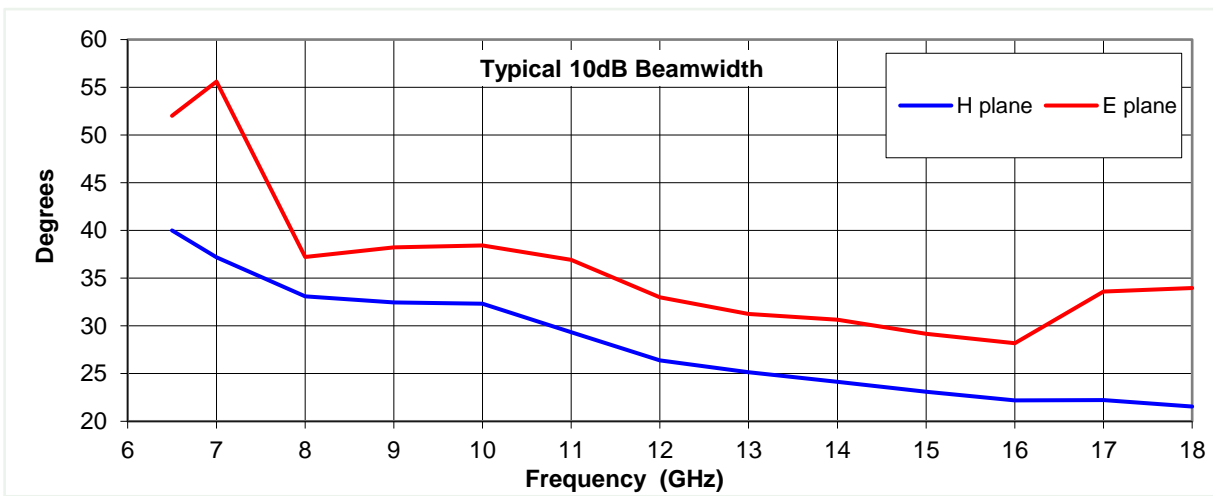
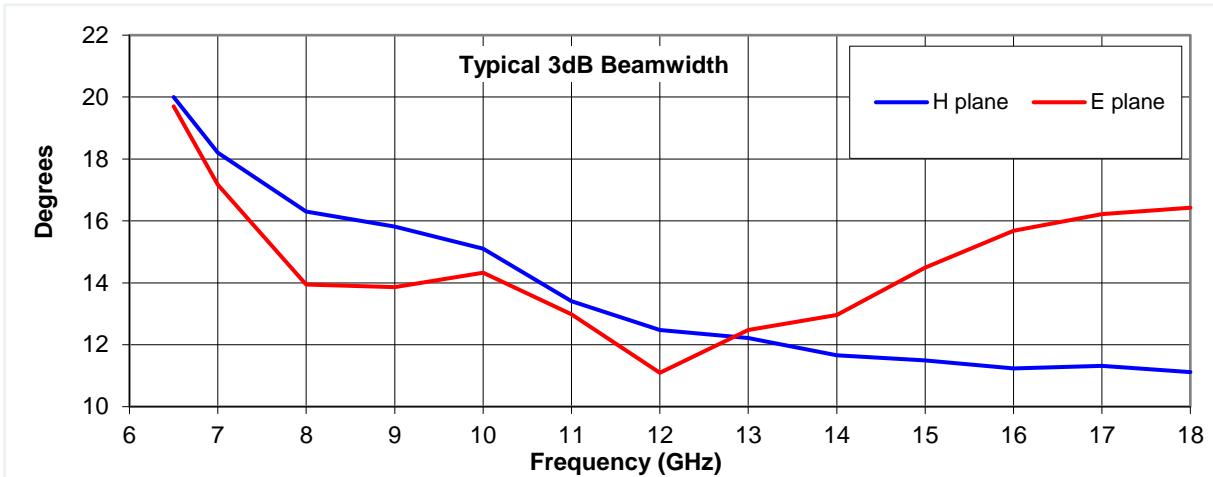
Typical Specification

Frequency	6.5 to 18 GHz
Connector Type	WRD650 flange
Power Handling	4 kW c.w.
VSWR	< 1.15:1 at 9 to 18 GHz 1.3:1 maximum
Gain	18.5 to 21.9 dBi
Antenna Factor	27.3 to 33.6 dB/m
3dB Beamwidth	11 to 20 degrees
10dB Beamwidth	22 to 56 degrees
Weight	3.5 kg
Maximum Size	200 x 160 mm aperture x 426 mm long
Mounting	Mount flange at centre of gravity, with 16 holes, diameter 6 mm, 40 mm centres
Construction	Brass horn with composite plastic radome, stainless steel screws, painted.

Typical Antenna Gain / Factor

This is calculated by reference to standard gain horn antennas, and cross checked with reference to the antenna beamwidth, with an estimated error of +/- 0.8dB.

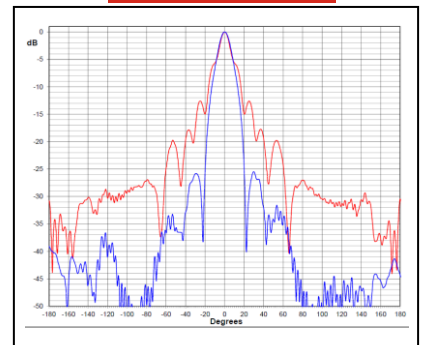
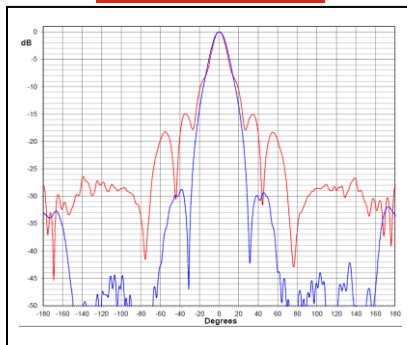
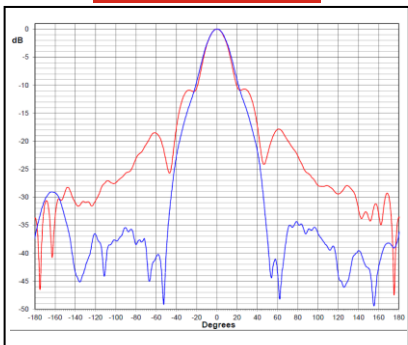




6.5 GHz

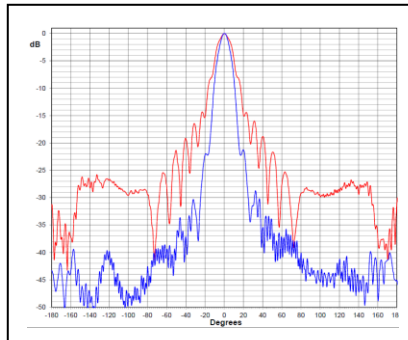
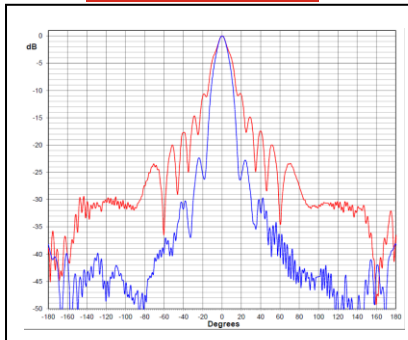
9 GHz

12 GHz



15 GHz

18 GHz



Red trace = E-plane, Blue trace = H-plane cut