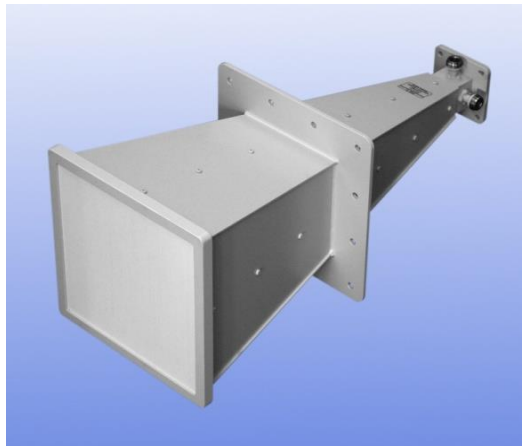


2 - 18 GHz Dual Polar Wideband High Gain Horn Antenna fitted with N type Connectors and a Radome

Catalogue number **QWH-DL-2-18-N-HG-R**

Steatite reference **QMS-00775**

Contents **Summary**
Typical Gain / Antenna Factor
Typical Beamwidth / Patterns
VSWR

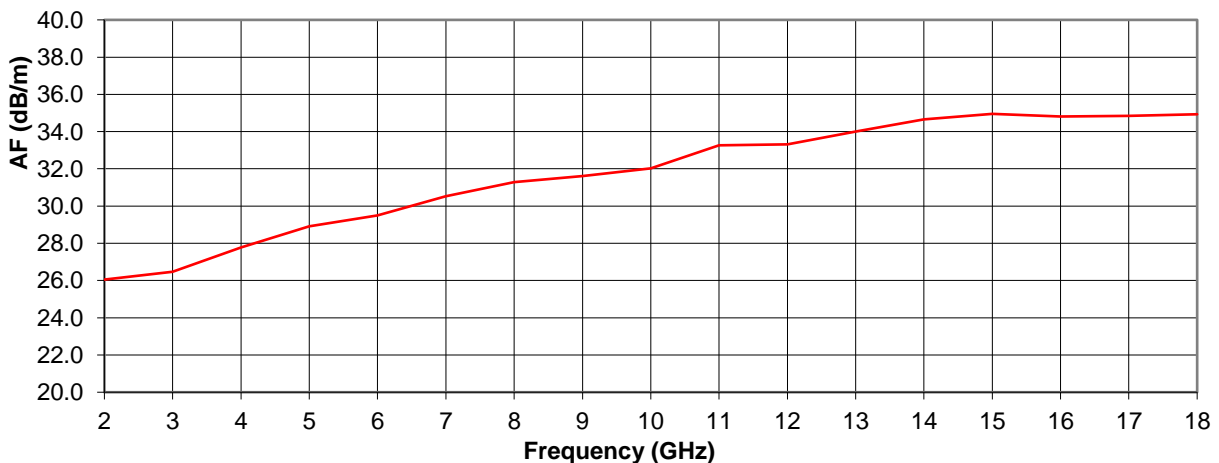
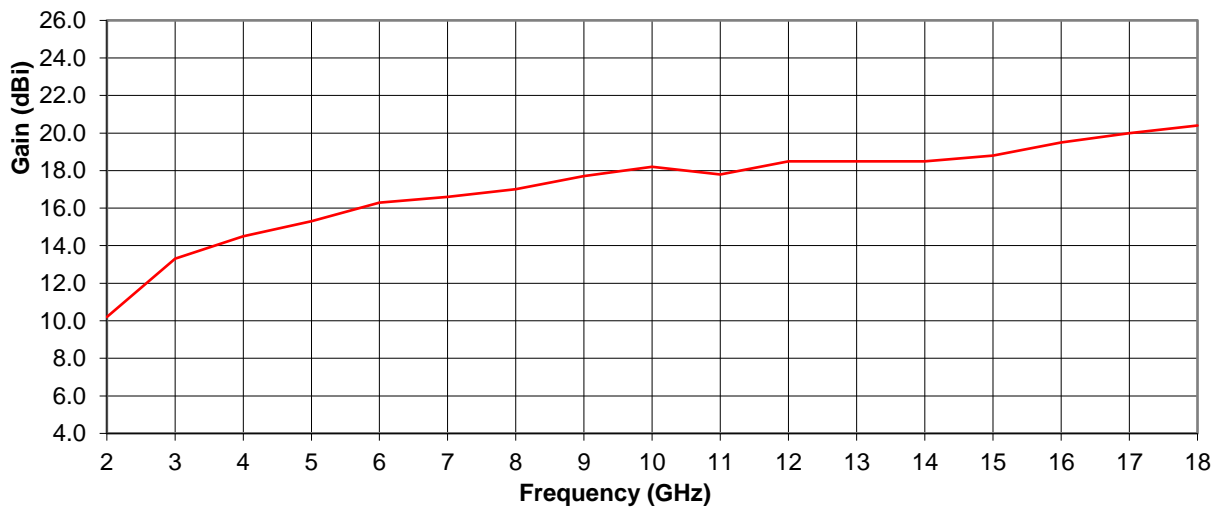


Typical Specification

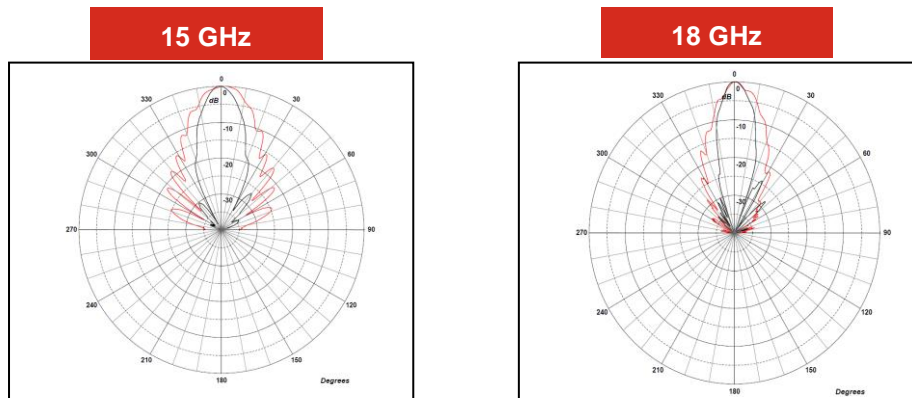
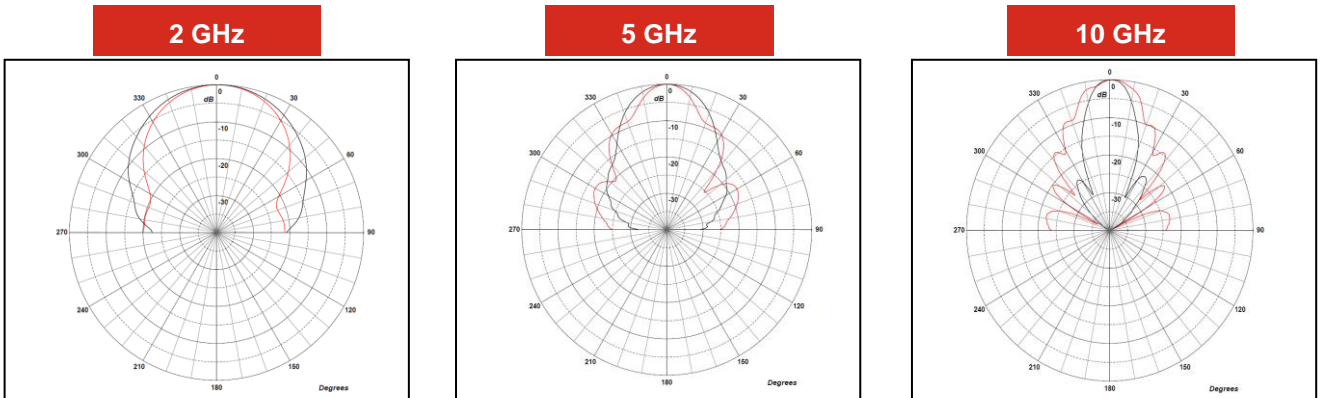
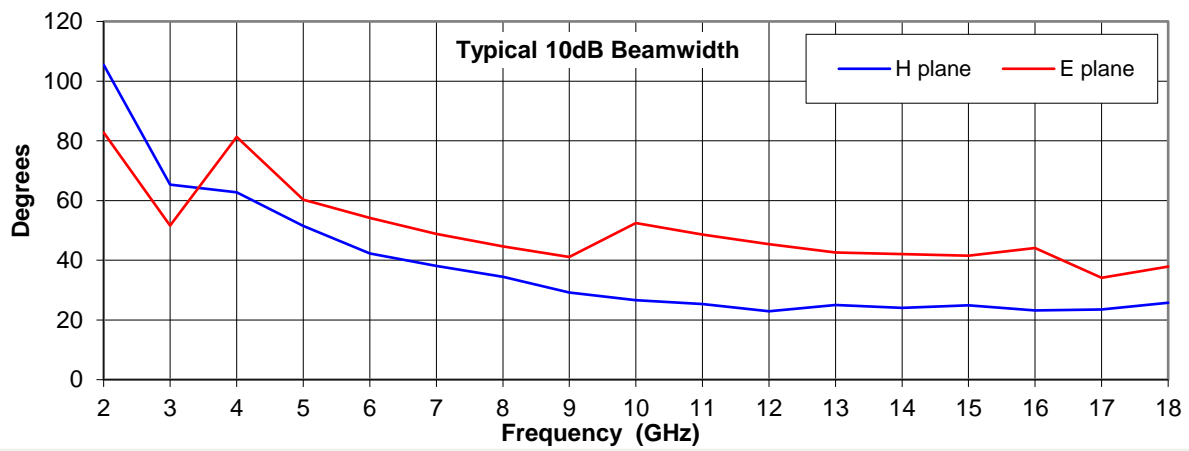
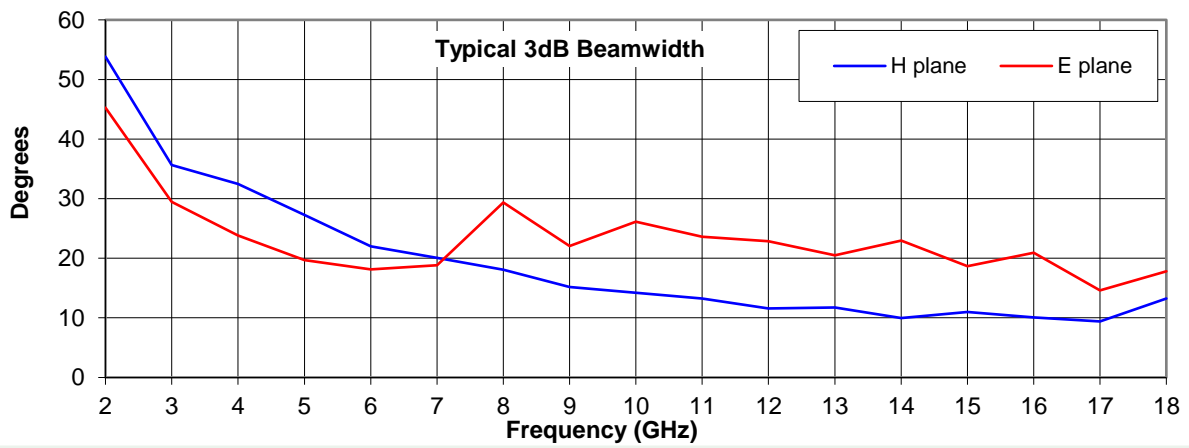
Frequency	2 to 18 GHz
Connector Type	Type N
Power Handling	40 W c.w.
VSWR	Typically < 2.5 : 1
Gain	10.2 to 20.4 dBi
Antenna Factor	26.1 to 35 dB/m
3dB Beamwidth	9 to 54 degrees
10dB Beamwidth	23 to 105 degrees
Weight	2 kg nominal
Maximum Size	180 mm x 180 mm external aperture x 433 mm long
Mounting	Rear mounting plate with 4 holes, diameter 4 mm, 50 mm centres
Construction	Aluminium and engineering plastics. Painted.

Typical Antenna Gain / Factor

This is calculated by reference to standard gain horn antennas, and cross checked with reference to the antenna beamwidth, with an estimated error of +/- 0.8dB.



Typical Beamwidth / Radiation Patterns



Red trace = E-plane, Blue trace = H-plane cut