

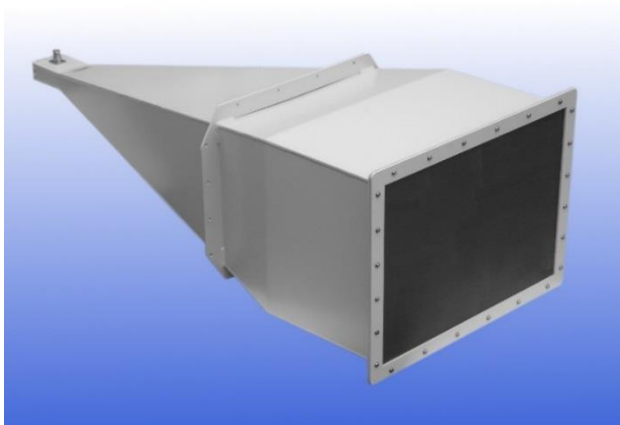
2.6 - 4.0 GHz Linearly Polarised 21 dBi Lensed Horn Antenna fitted with an SC type Connector and Radome

Catalogue number **QSH-SL-2.6-4-C-21-R**

Q-par reference **QMS-00494**

Contents **Summary**

Typical Gain / Antenna Factor - at 1 metre
Typical Beamwidth / Patterns - at 1 metre
VSWR



(Indicative photograph only)



Typical Specification - at 1 metre

Frequency	2.6 to 4 GHz
Connector Type	SC Jack
Power Handling	10 kW peak; 700 W mean
VSWR	Typically < 1.5:1; Maximum 2:1
Gain	19.6 to 22.2 dBi
Antenna Factor	18.9 to 20.1 dB/m
3dB Beamwidth	9 to 20 degrees
Weight	10.8 kg nominal
Maximum Size	497 x 377 ext. aperture x 1140 mm long
Mounting	Mount flange with 8 holes, 95 mm centres, in two rows 316 mm apart. Plus 8 holes, 70 mm centres, in two rows 430 mm apart
Construction	Welded aluminium, powdercoat finish. Dielectric radome.

Typical Antenna Gain / Factor - at 1 metre

This is calculated by reference to standard gain horn antennas, and cross checked with reference to the antenna beamwidth, with an estimated error of +/- 0.8dB.

