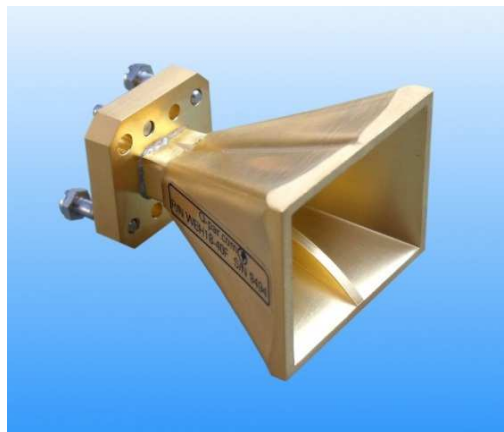


18 - 40 GHz Linearly Polarised Wideband Ridged Horn Antenna fitted with WRD180 flange

Catalogue number **QWH-SL-18-40-F-SG**

Q-par reference **QMS-00380**

Contents **Summary**
Typical Gain / Antenna Factor
Typical Beamwidth / Patterns
VSWR



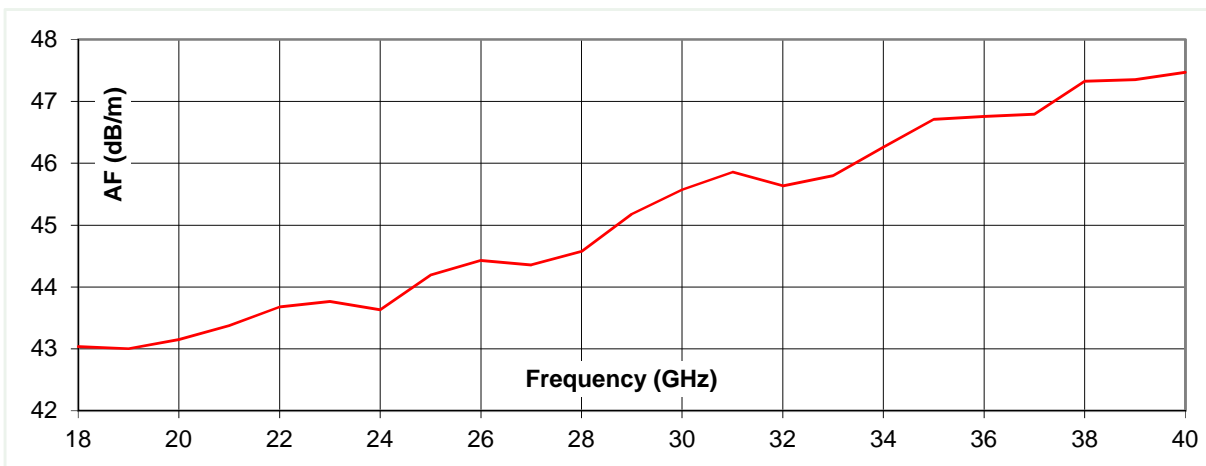
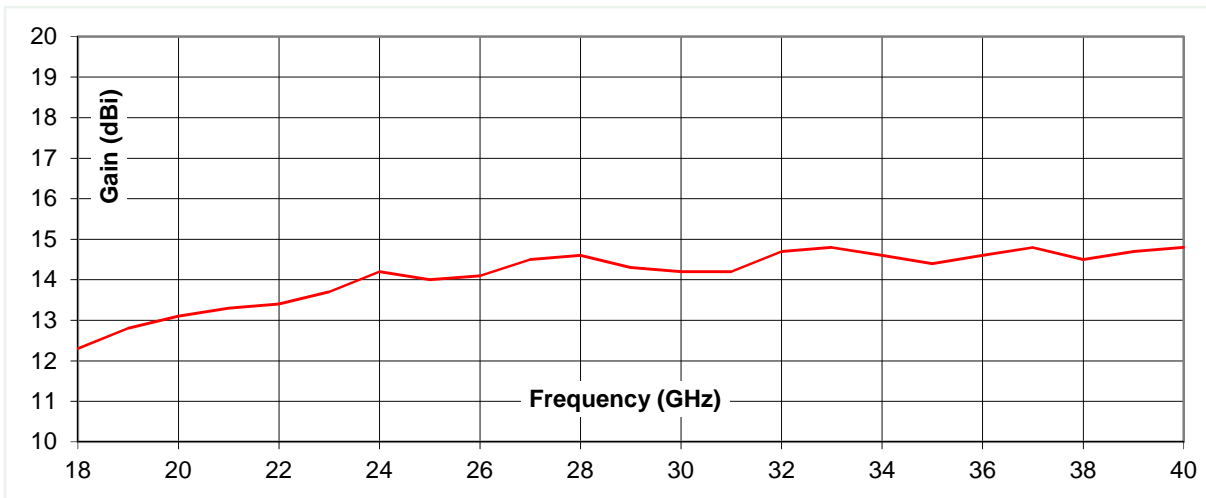
Typical photograph. Finish according to customer specifications.

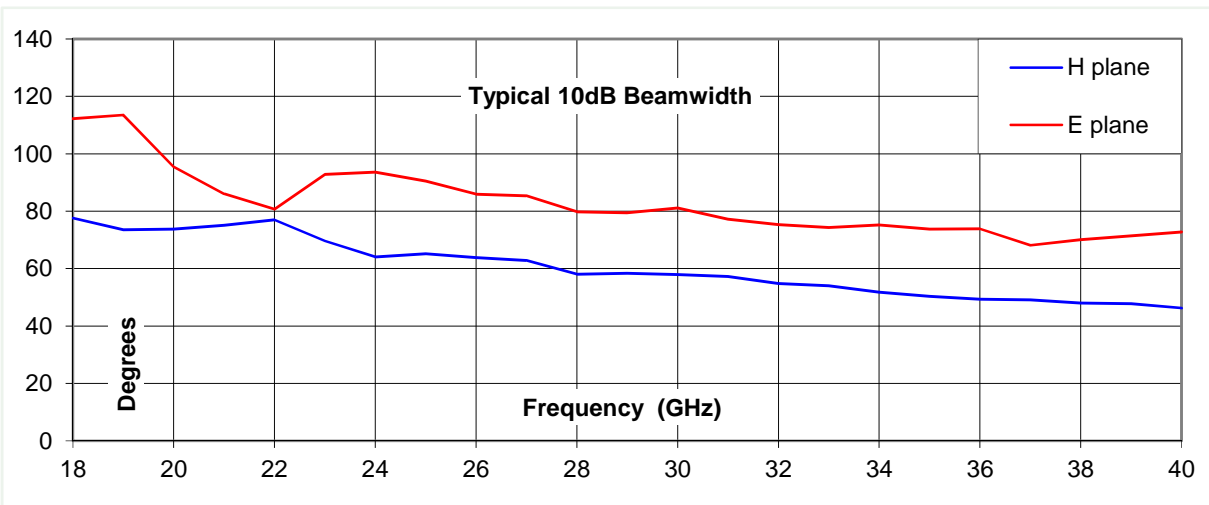
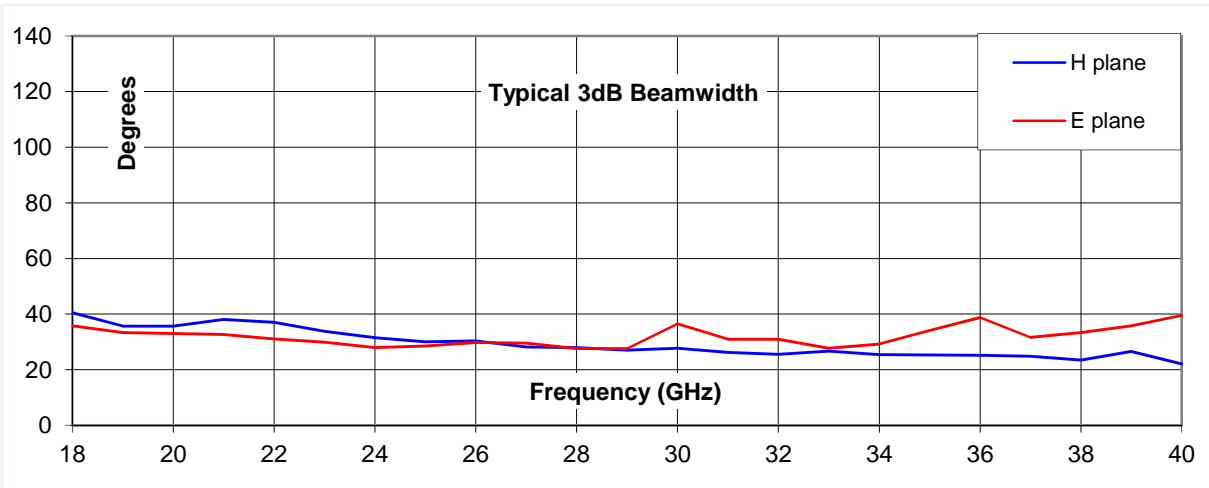
Typical Specification

Frequency	18 to 40 GHz
Connector type	WRD180 flange
Power Handling	200 Watt c.w.
VSWR	Typically < 1.3 :1
Gain	12.3 to 14.8 dBi
Antenna Factor	43 to 47.5 dB/m
3dB Beamwidth	22 to 41 degrees
10dB Beamwidth	46 to 113 degrees
Weight	70 g nominal
Maximum size	35 mm x 28 mm external aperture x 38 mm long
Mounting	WRD180 flange
Construction	Electroformed copper horn, gold plated.

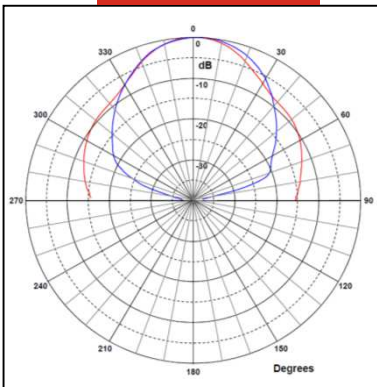
Typical Antenna Gain / Factor

This is calculated by reference to standard gain horn antennas, and cross checked with reference to the antenna beamwidth, with an estimated error of +/- 0.8dB.

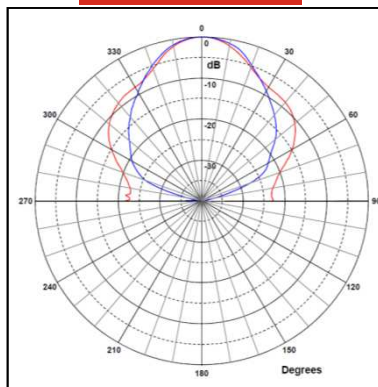




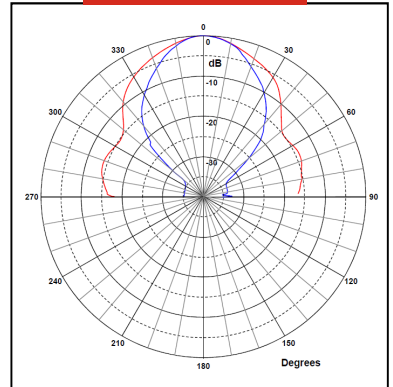
18 GHz



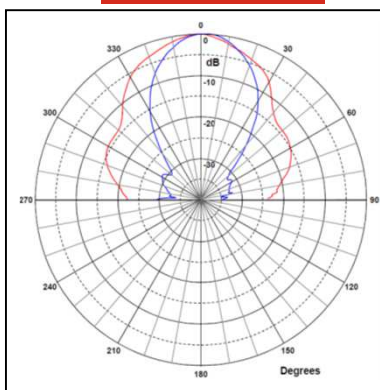
24 GHz



30 GHz



35 GHz



40 GHz

