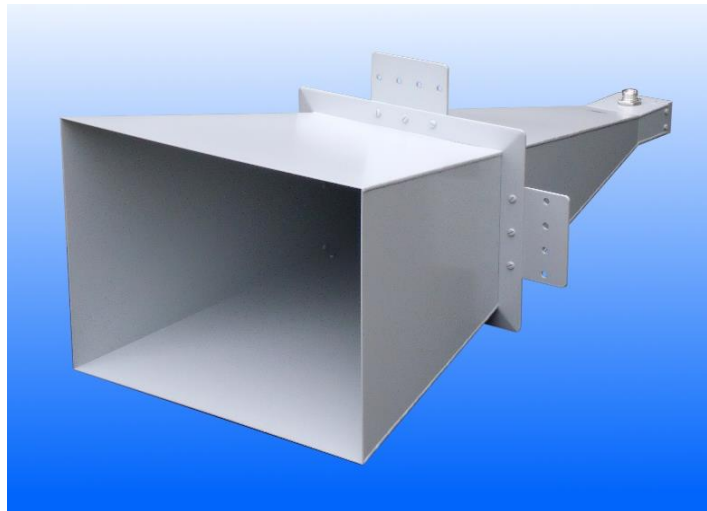


# 1.7 - 2.6 GHz Linearly Polarised 20 dBi Horn Antenna fitted with a 7:16 DIN type Connector

Catalogue number **QSH-SL-1.7-2.6-A-20**

Steatite reference **QMS-00342**

Contents **Summary**  
**Typical Gain / Antenna Factor**  
**Typical Beamwidth / Patterns**  
**VSWR**

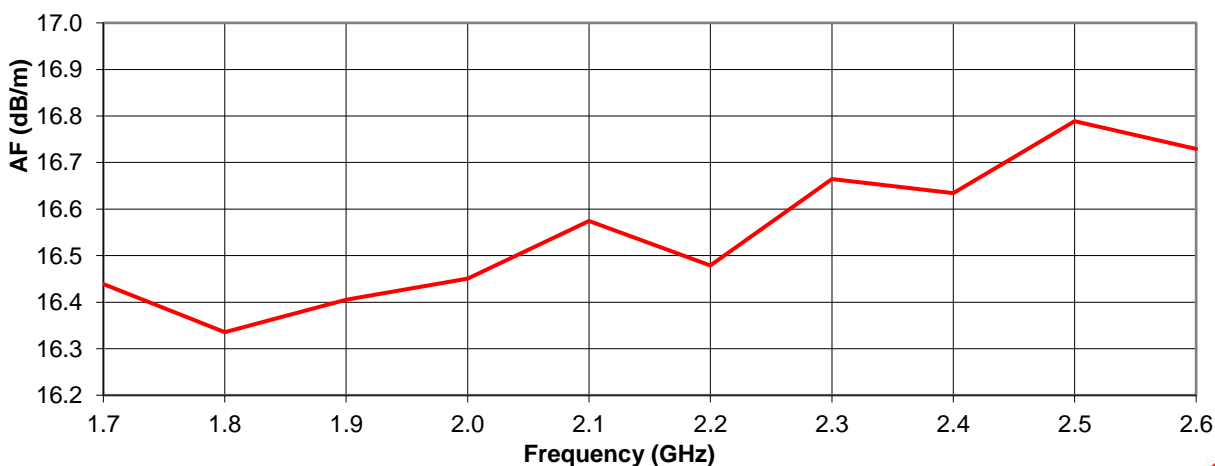
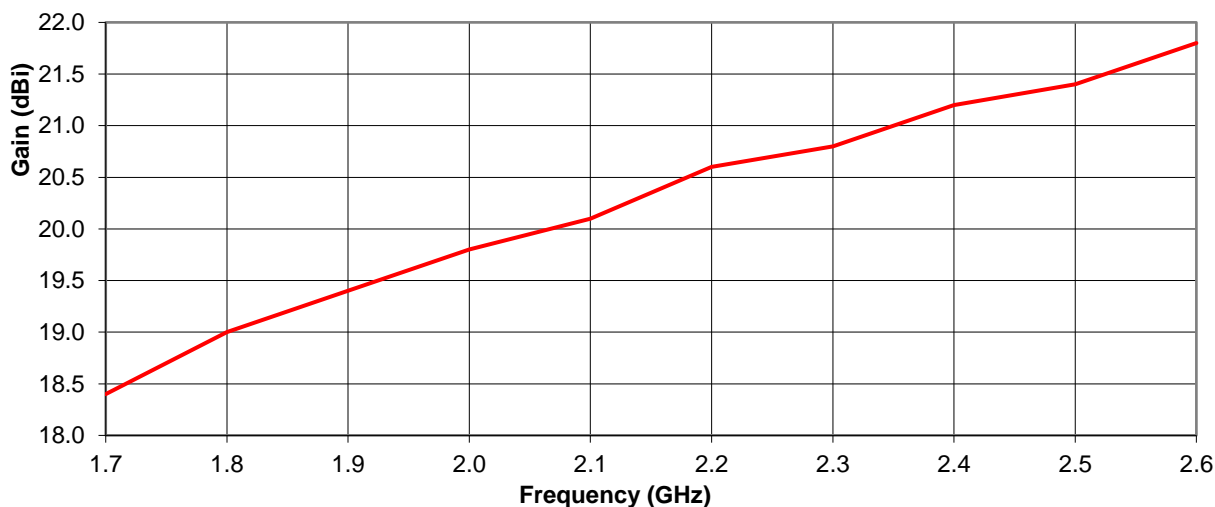


## Typical Specification

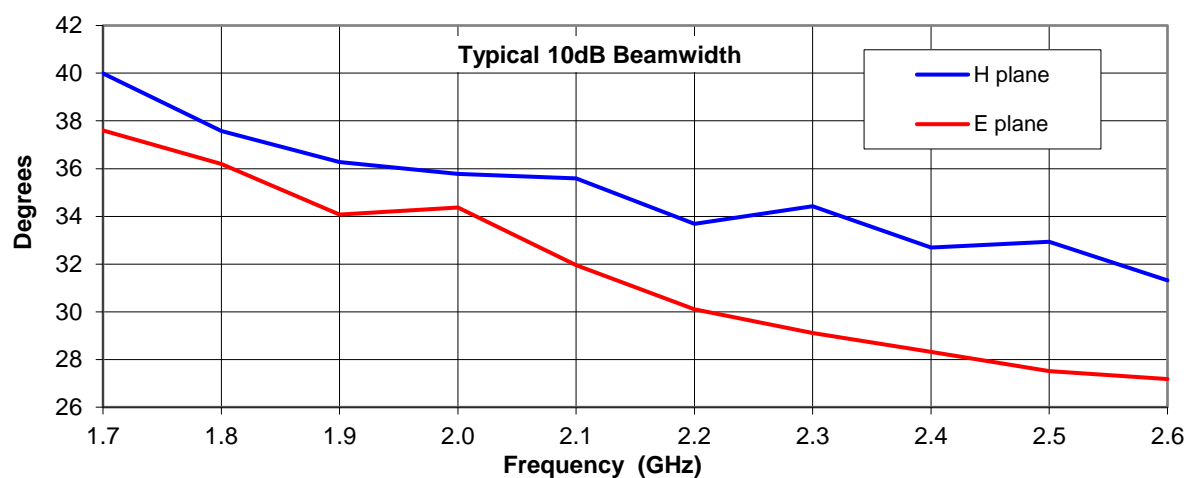
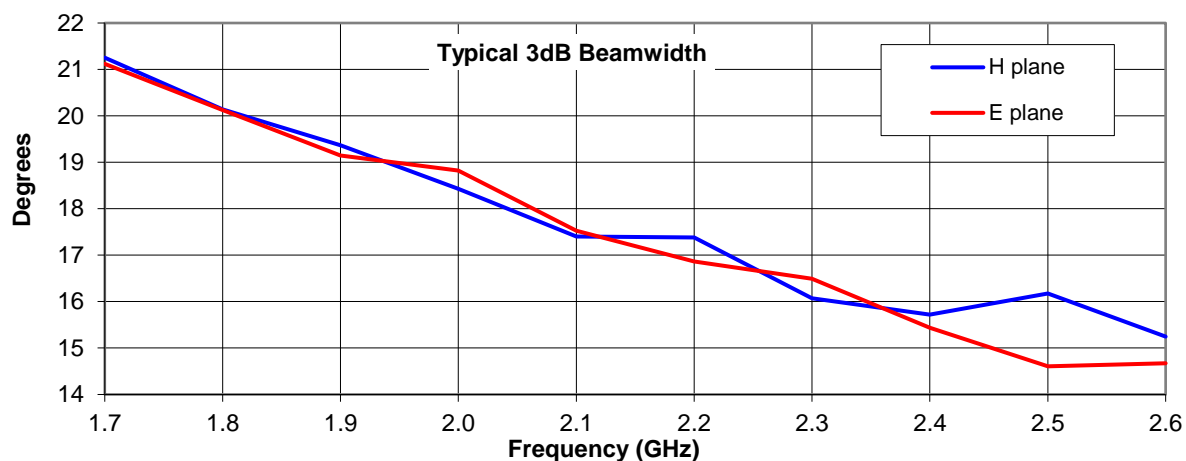
<b>Frequency</b>	1.7 to 2.6 GHz
<b>Connector Type</b>	7/16 type jack
<b>Power Handling</b>	800W CW (Ambient Temperature, Sea Level and a VSWR of 1.3)
<b>VSWR</b>	Typically <1.3 :1
<b>Gain</b>	18.4 to 21.8 dBi
<b>Antenna Factor</b>	16.3 to 16.8 dB/m
<b>3dB Beamwidth</b>	15 to 21 degrees
<b>10dB Beamwidth</b>	27 to 40 degrees
<b>Weight</b>	11 kg nominal
<b>Maximum Size</b>	578 mm x 410 mm external aperture x 1225 mm long
<b>Mounting</b>	Mounting Plate on 2 sides at C of G. Each with 4 holes, diameter 10 mm, 40 mm centres
<b>Construction</b>	Welded aluminium. Powdercoat finish.

## Typical Antenna Gain / Factor

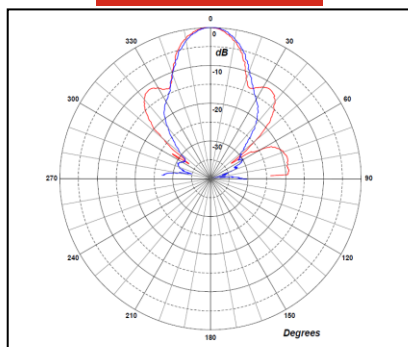
This is calculated by reference to standard gain horn antennas, and cross checked with reference to the antenna beamwidth, with an estimated error of +/- 0.8dB.



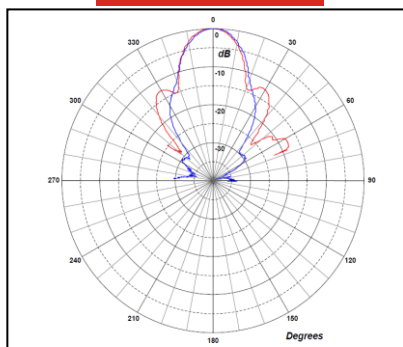
## Typical Beamwidth / Radiation Patterns



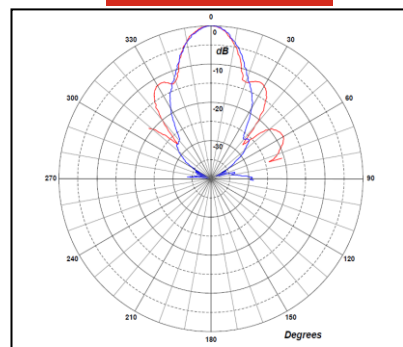
1.7 GHz



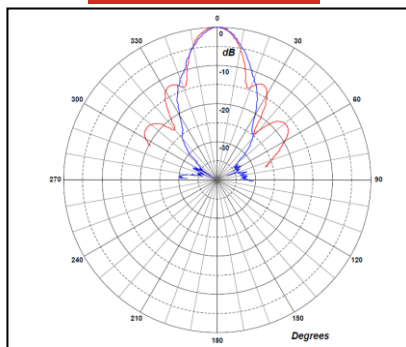
1.9 GHz



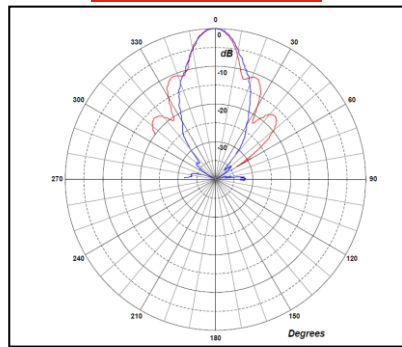
2.1 GHz



2.3 GHz



2.6 GHz



Red trace = E-plane, Blue trace = H-plane cut

