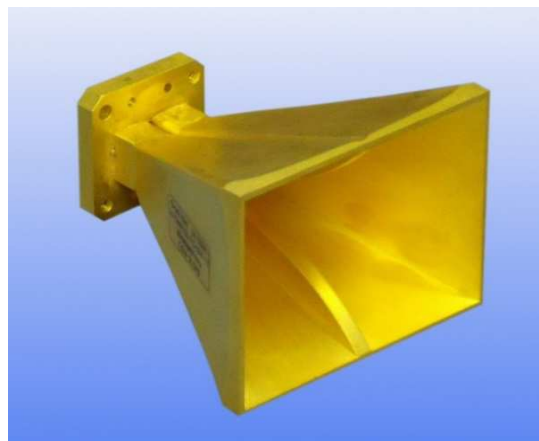


7.5 - 18 GHz Linearly Polarised Wideband Ridged Horn Antenna fitted with a Waveguide Flange

Catalogue number **QWH-SL-7.5-18-F-SG**

Q-par reference **QMS-00302**

Contents **Summary**
Typical Gain / Antenna Factor
Typical Beamwidth / Patterns
VSWR

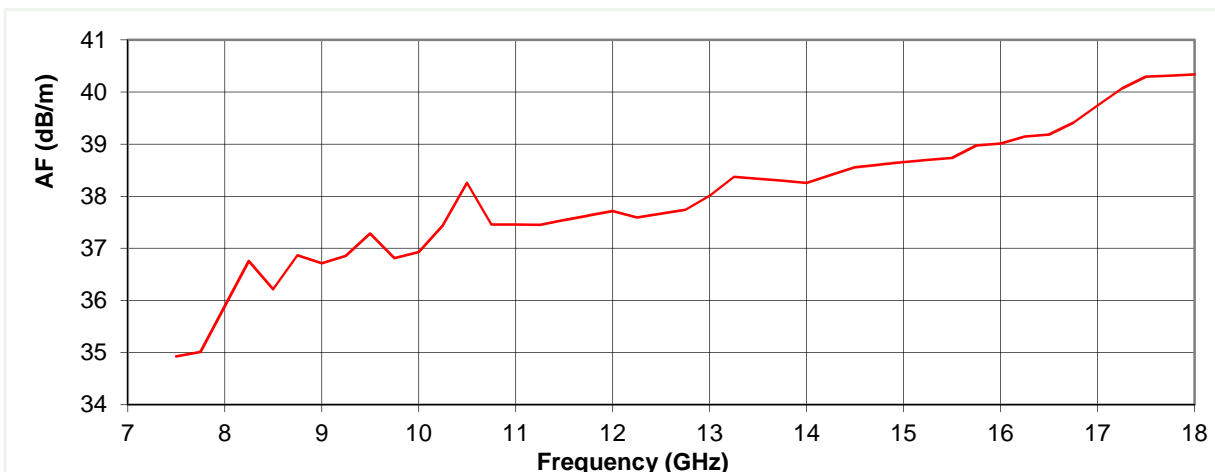
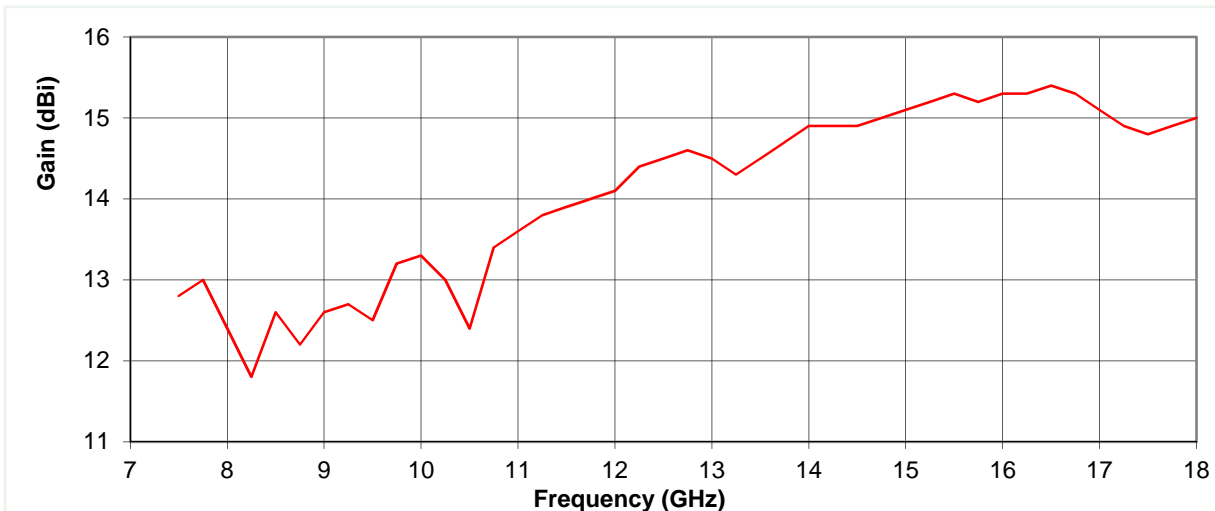


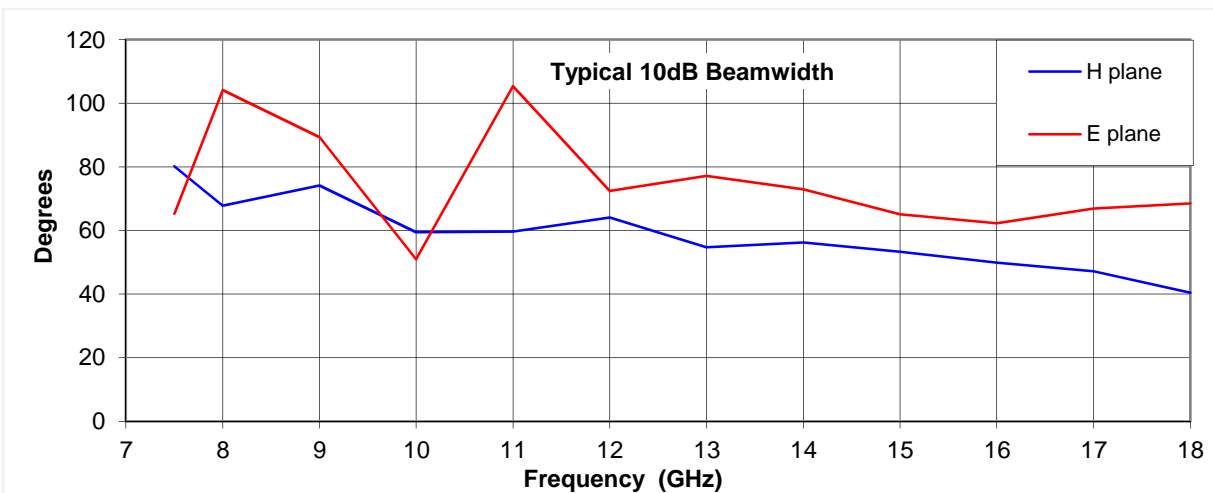
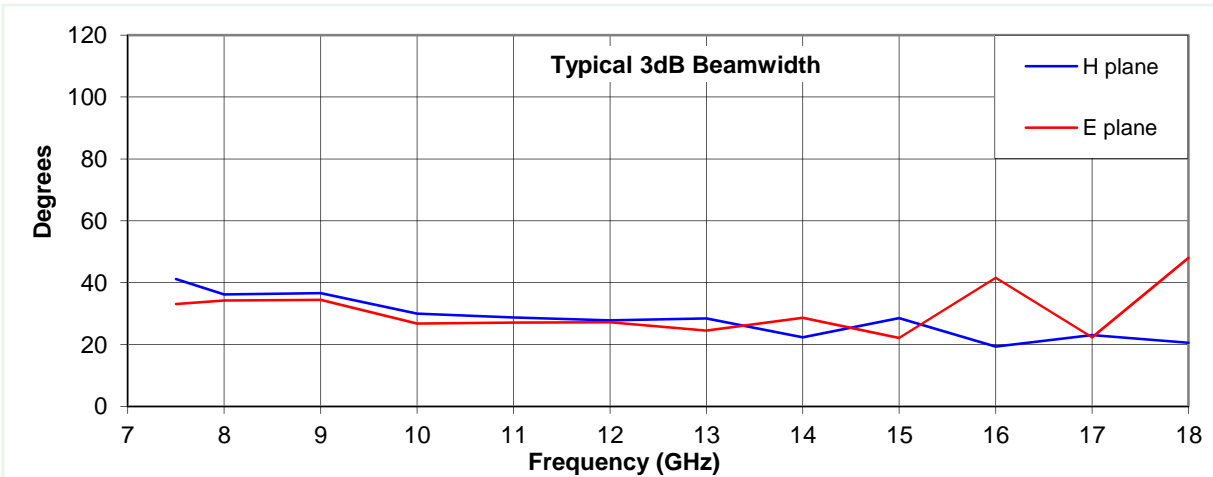
Typical Specification

| | |
|-----------------------|--|
| Frequency | 7.5 to 18 GHz |
| Connector Type | WRD750 Flange |
| Power Handling | 1 kW c.w. |
| VSWR | Typically < 1.5 :1 |
| Gain | 11.8 to 15.4 dBi |
| Antenna Factor | 34.9 to 40.3 dB/m |
| 3dB Beamwidth | 19 to 48 degrees |
| 10dB Beamwidth | 40 to 105 degrees |
| Weight | 330 g nominal |
| Maximum Size | 75 mm x 58 mm external aperture x 78 mm long |
| Mounting | WRD750 Flange |
| Construction | Electroformed copper horn, brass flange. Gold plated |

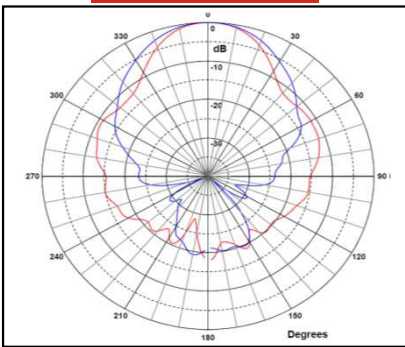
Typical Antenna Gain / Factor

This is calculated by reference to standard gain horn antennas, and cross checked with reference to the antenna beamwidth, with an estimated error of +/- 0.8dB.

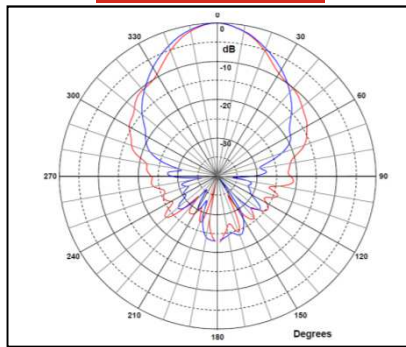




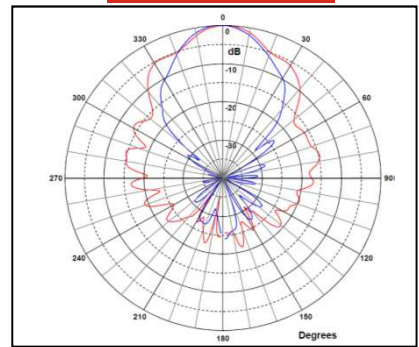
7.5 GHz



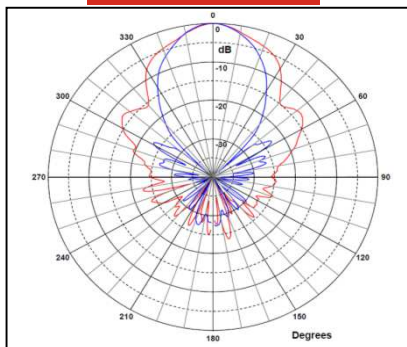
10 GHz



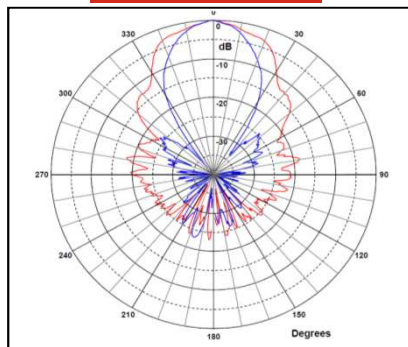
13 GHz



16 GHz



18 GHz



Red trace = E-plane, Blue trace = H-plane cut