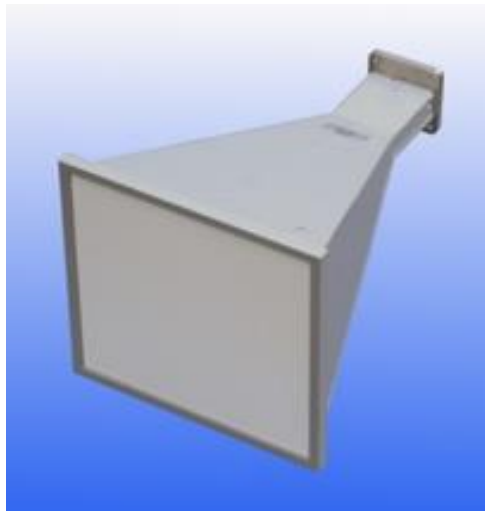


2.5 - 7.5 GHz Linearly Polarised Wideband Ridged Horn Antenna fitted with a WRD250 Flange and Radome

Catalogue number **QWH-SL-2.5-7.5-F-SG-R**

Steatite reference **QMS-00289**

Contents **Summary**
Typical Gain / Antenna Factor
Typical Beamwidth / Patterns

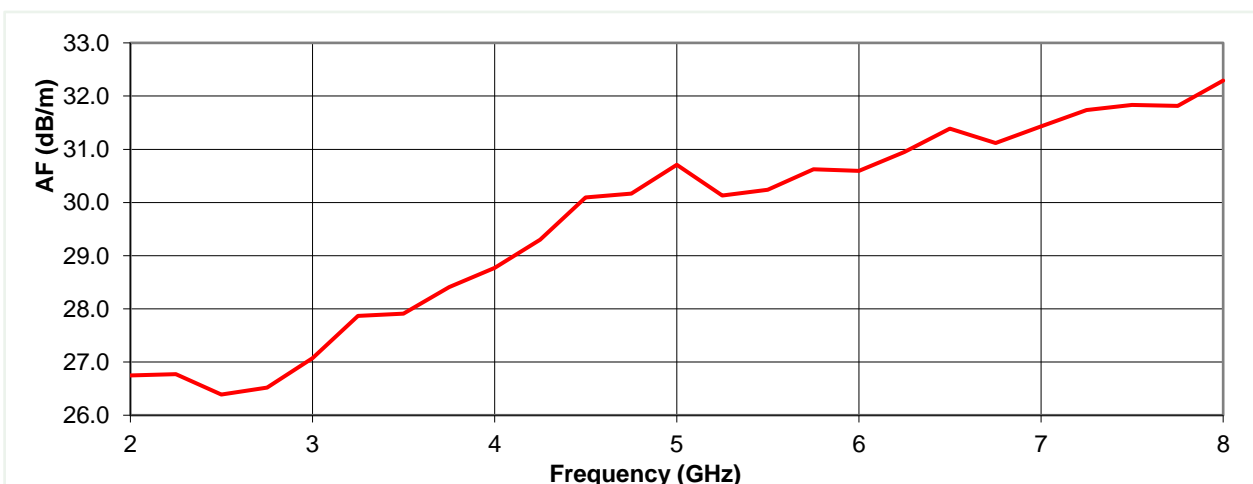
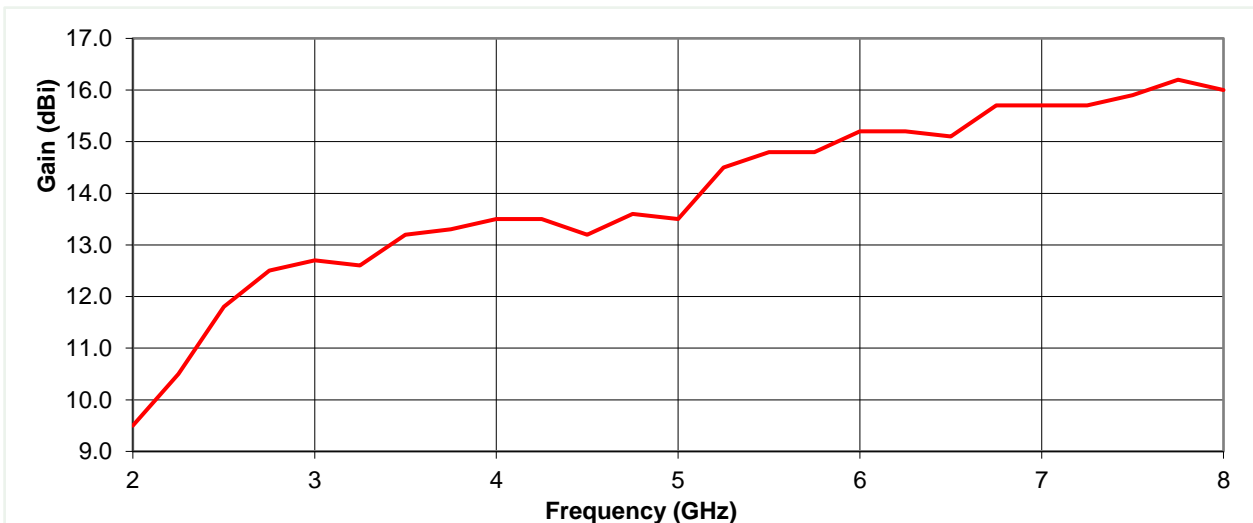


Typical Specification

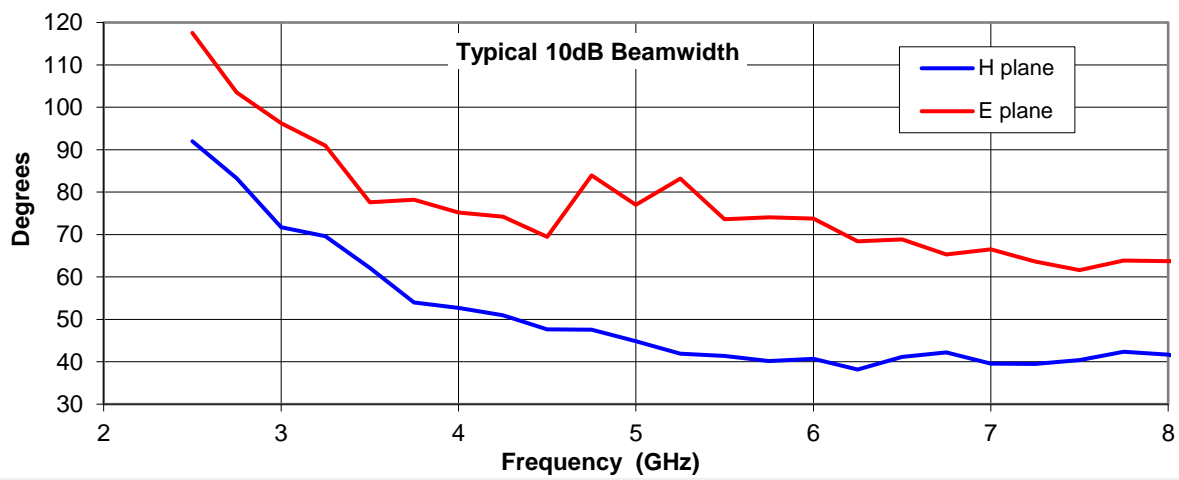
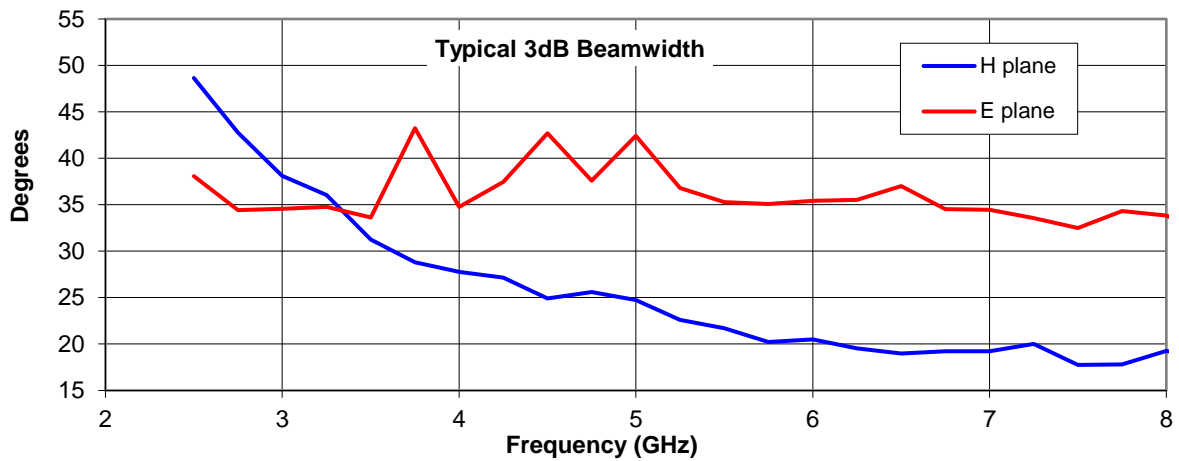
Frequency	2.6 to 8 GHz
Connector Type	WRD-250 Waveguide
Power Handling	2kW CW
VSWR	< 1.4:1
Gain	9.5 to 16.2 dBi
Antenna Factor	26.4 to 32.3 dB/m
3dB Beamwidth	18 to 49 degrees
10dB Beamwidth	38 to 118 degrees
Weight	1.6 kg nominal
Maximum Size	216 x 216 mm aperture x 318 mm long
Mounting	WRD250 flange
Construction	Aluminium horn with plastic composite radome, painted

Typical Antenna Gain / Factor

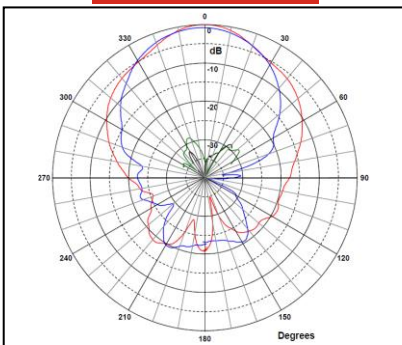
This is calculated by reference to standard gain horn antennas, and cross checked with reference to the antenna beamwidth, with an estimated error of +/- 0.8dB.



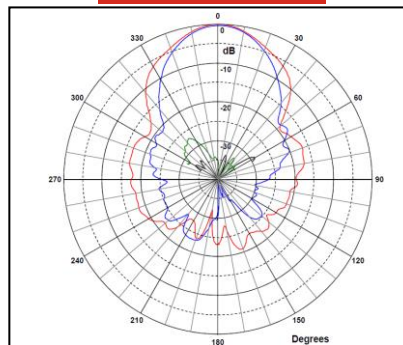
Typical Beamwidth / Radiation Patterns



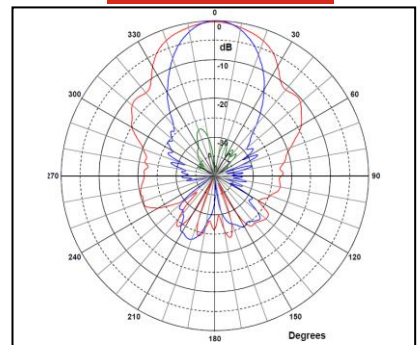
2.5 GHz



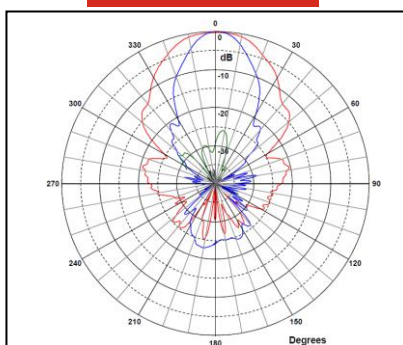
3.5 GHz



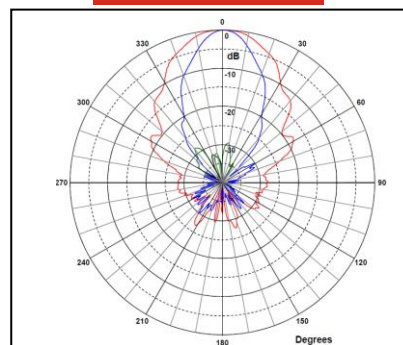
4.5 GHz



6.5 GHz



7.5 GHz



Red trace = E-plane, Blue trace = H-plane cut