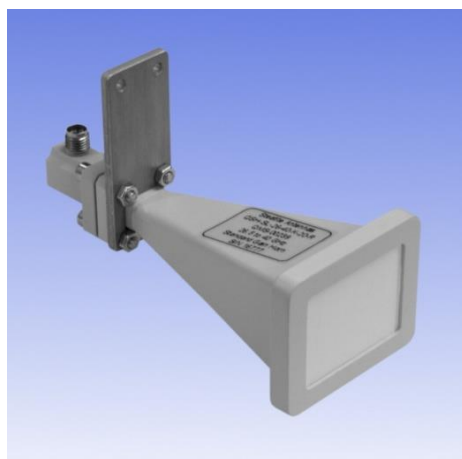


# 26 - 40 GHz Linearly Polarised 20 dBi Horn Antenna fitted with a K type Connector and Radome

Catalogue number **QSH-SL-26-40-K-20-R**

Q-par reference **QMS-00239**

Contents **Summary**  
**Typical Gain / Antenna Factor**  
**Typical Beamwidth / Patterns**  
**VSWR**

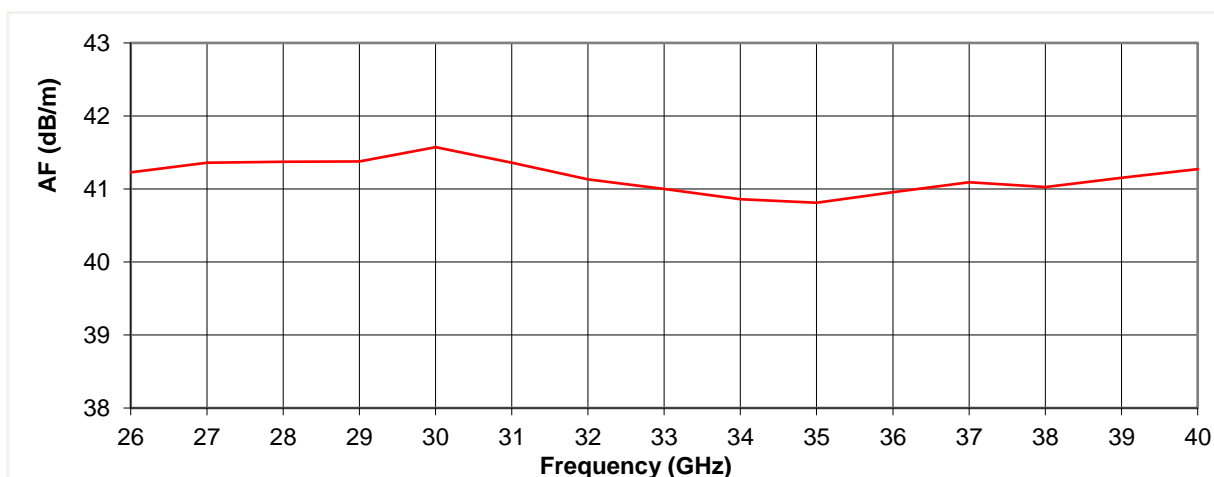
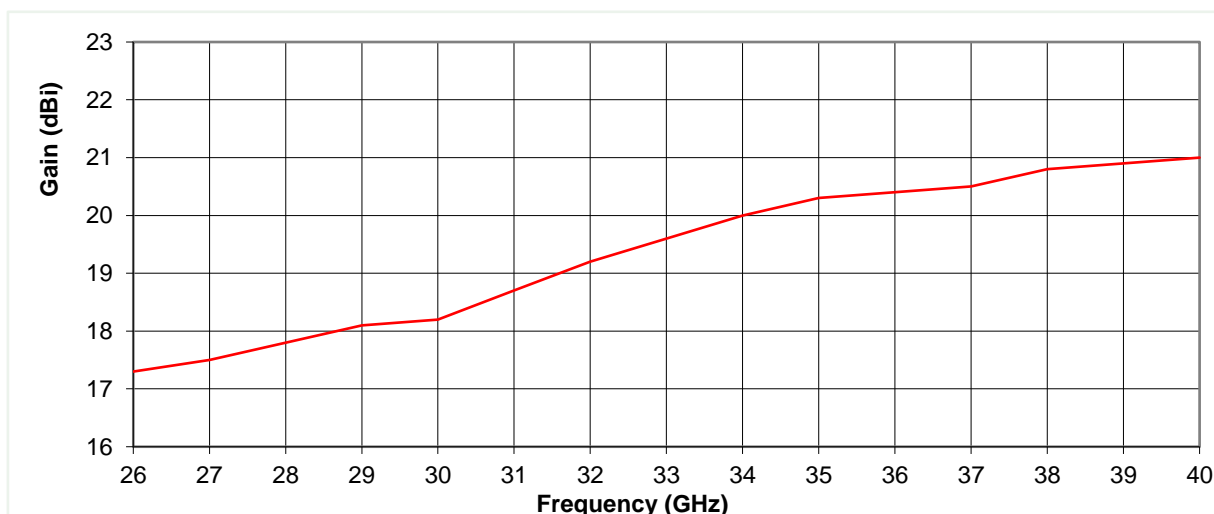


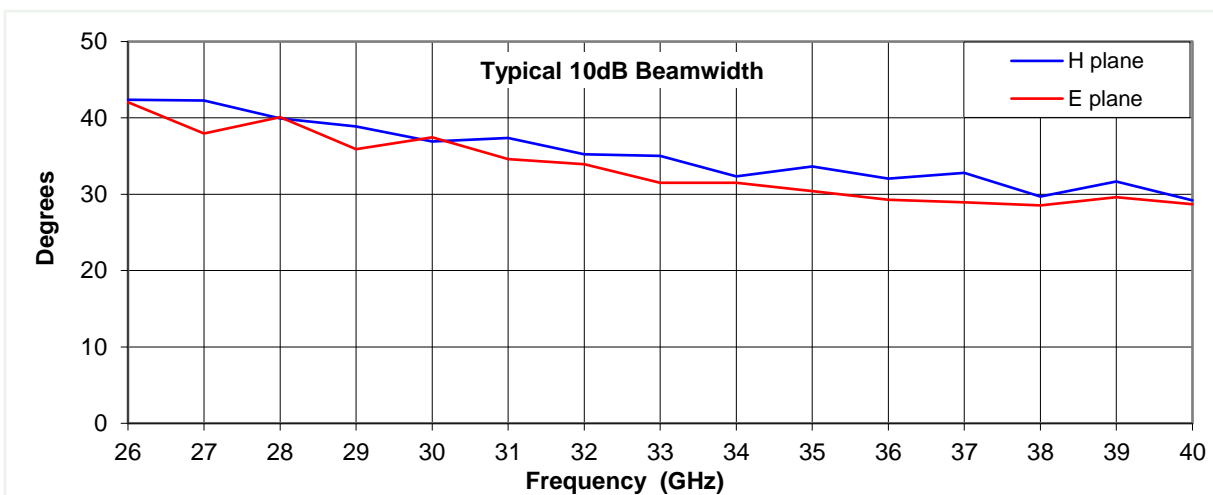
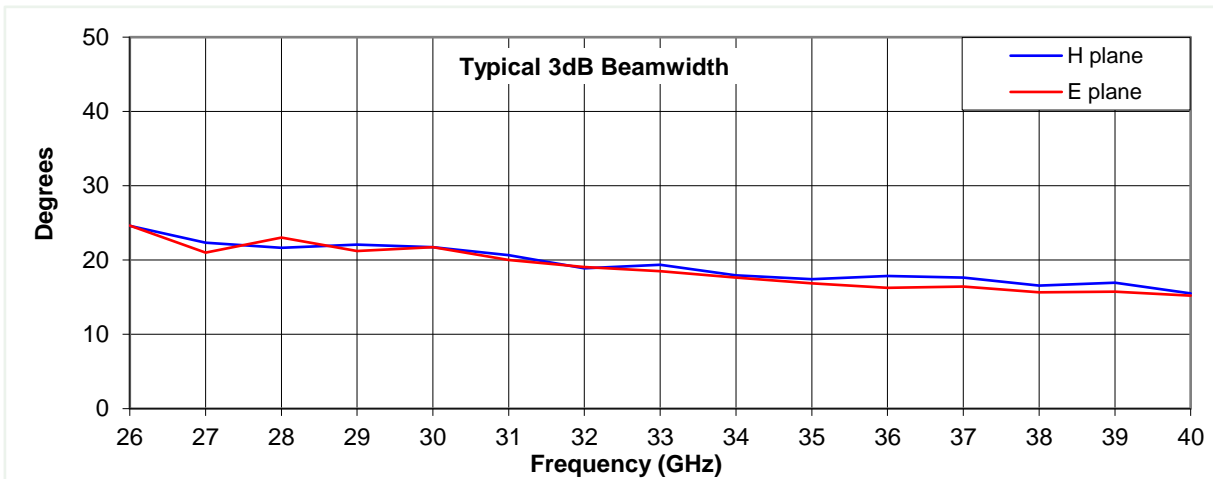
## Typical Specification

|                       |                                                                                                                      |
|-----------------------|----------------------------------------------------------------------------------------------------------------------|
| <b>Frequency</b>      | 26 to 40 GHz                                                                                                         |
| <b>Connector Type</b> | K type (2.92 mm) jack                                                                                                |
| <b>Power Handling</b> | 20 Watt c.w.                                                                                                         |
| <b>VSWR</b>           | Typically < 1.4:1                                                                                                    |
| <b>Gain</b>           | 17.3 to 21 dBi                                                                                                       |
| <b>Antenna Factor</b> | 40.8 to 41.6 dB/m                                                                                                    |
| <b>3dB Beamwidth</b>  | 15 to 25 degrees                                                                                                     |
| <b>10dB Beamwidth</b> | 29 to 42 degrees                                                                                                     |
| <b>Weight</b>         | 170 g nominal                                                                                                        |
| <b>Maximum Size</b>   | 45.3 x 37.3mm aperture x 100.3 mm long                                                                               |
| <b>Mounting</b>       | Mount plate with 2 holes, diameter 3 mm, 12 mm centres                                                               |
| <b>Construction</b>   | Gold plated electroformed copper horn with aluminium transition and mount plate, painted. Stainless steel connector. |

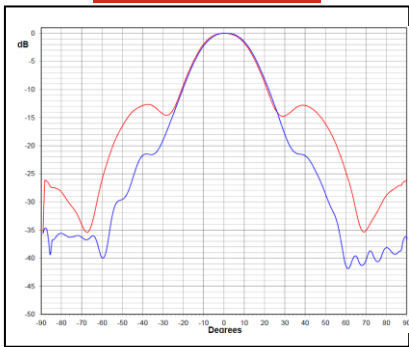
## Typical Antenna Gain / Factor

This is calculated by reference to standard gain horn antennas, and cross checked with reference to the antenna beamwidth, with an estimated error of +/- 0.8dB.

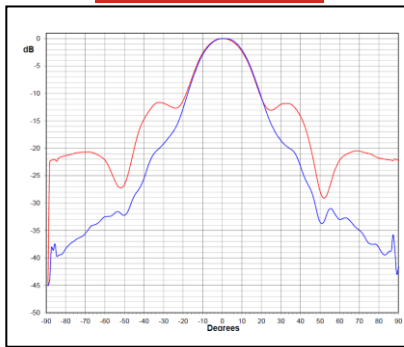




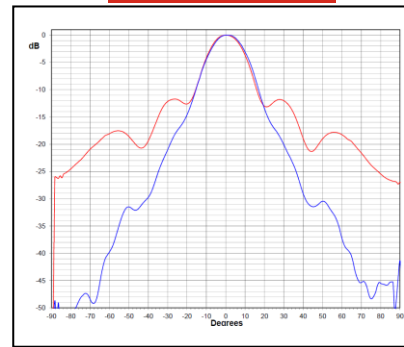
**26 GHz**



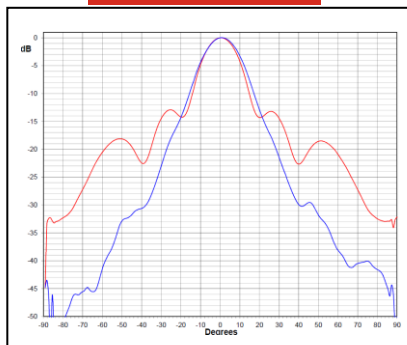
**30 GHz**



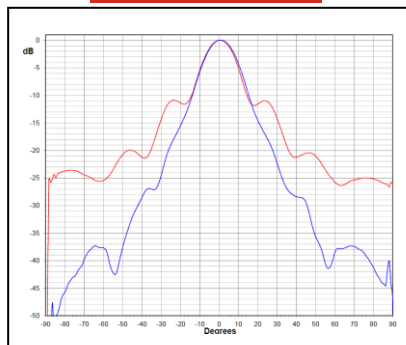
**34 GHz**



**37 GHz**



**40 GHz**



Red trace = E-plane, Blue trace = H-plane cut

