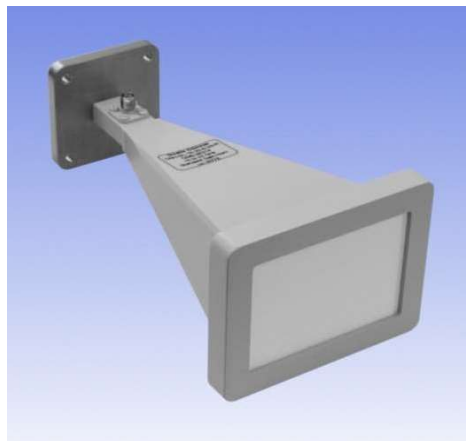


# 15 - 22 GHz Linearly Polarised 20 dBi Horn Antenna fitted with an SMA type Connector and Radome

Catalogue number **QSH-SL-15-22-S-20-R**

Q-par reference **QMS-00219**

Contents **Summary**  
**Typical Gain / Antenna Factor**  
**Typical Beamwidth / Patterns**  
**VSWR**

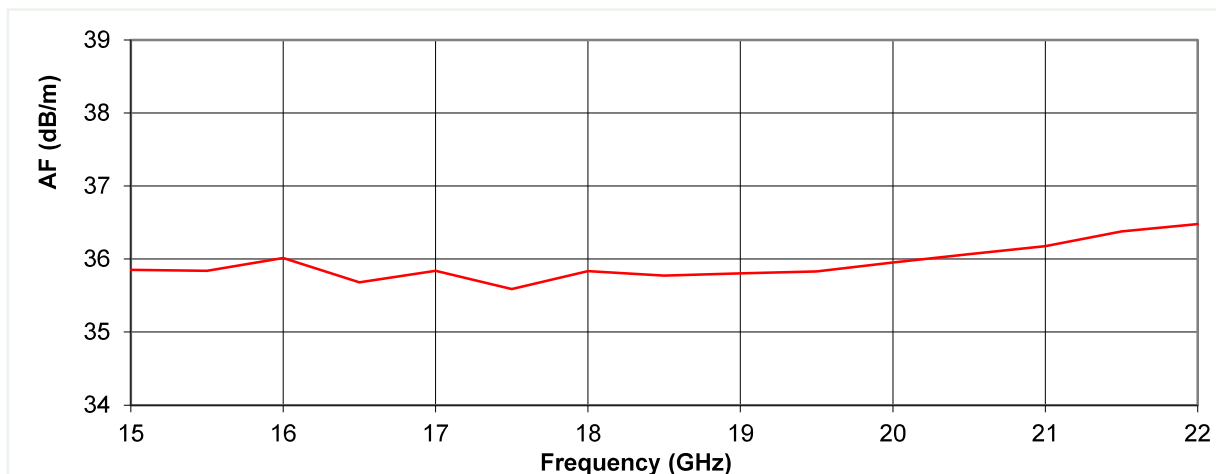
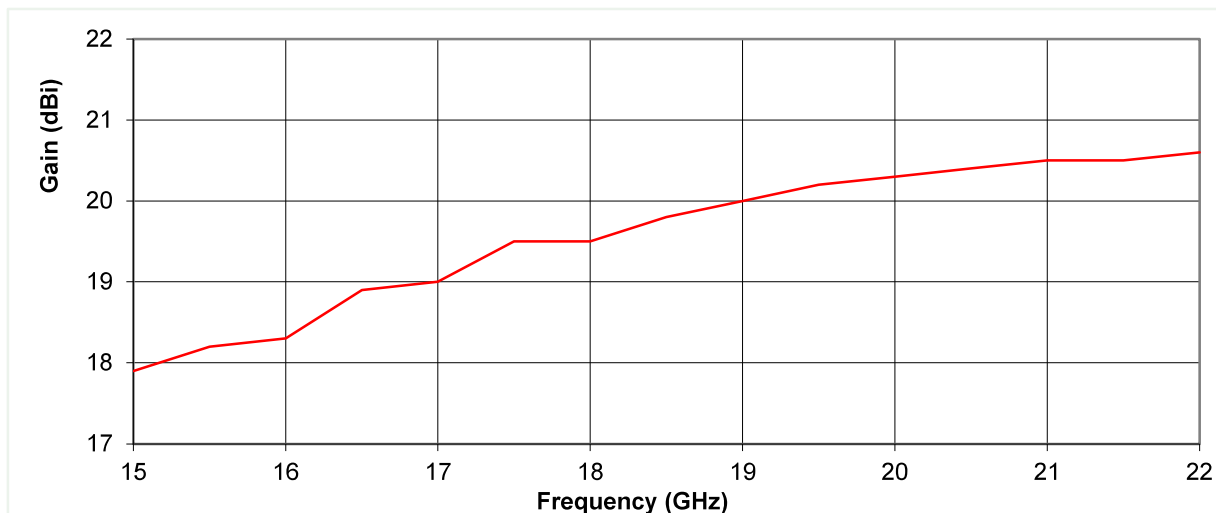


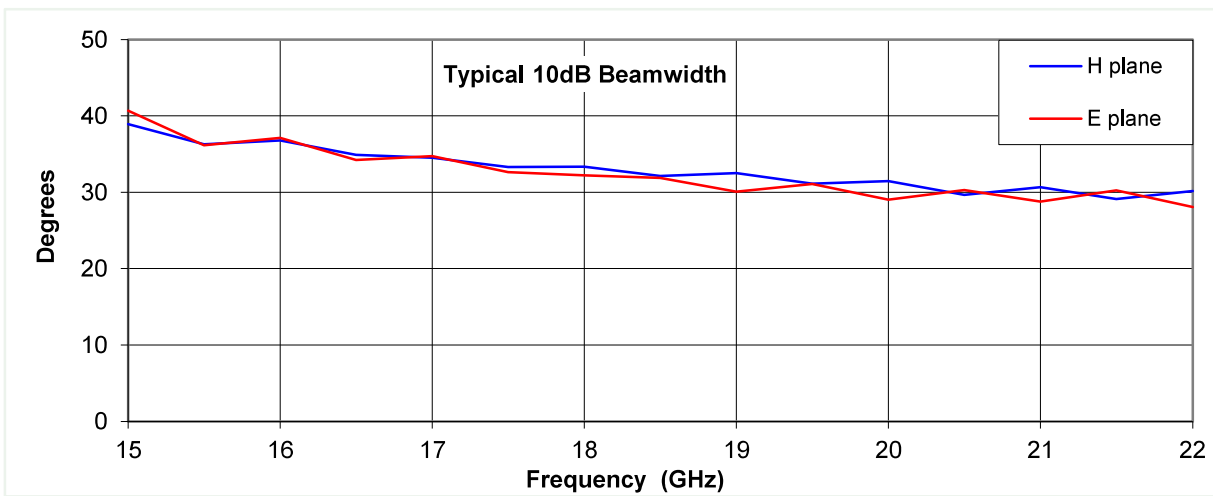
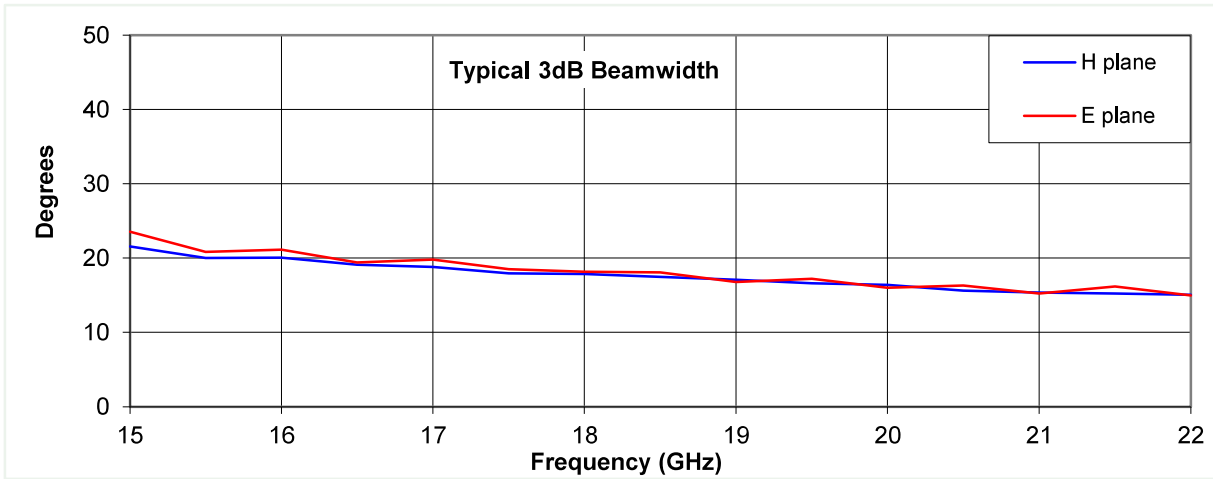
## Typical Specification

<b>Frequency</b>	15 to 22 GHz
<b>Connector Type</b>	SMA jack
<b>Power Handling</b>	20 Watt c.w.
<b>VSWR</b>	Typically < 1.4:1
<b>Gain</b>	17.9 to 20.6 dBi
<b>Antenna Factor</b>	35.6 to 36.5 dB/m
<b>3dB Beamwidth</b>	15 to 24 degrees
<b>10dB Beamwidth</b>	28 to 41 degrees
<b>Weight</b>	500 g nominal
<b>Maximum Size</b>	86 x 66 mm aperture x 162 mm long
<b>Mounting</b>	Rear mount plate with 4 holes, diameter 4 mm, 38 mm centres
<b>Construction</b>	Electroformed copper, painted. Anodised aluminium mount plate. Stainless steel connector.

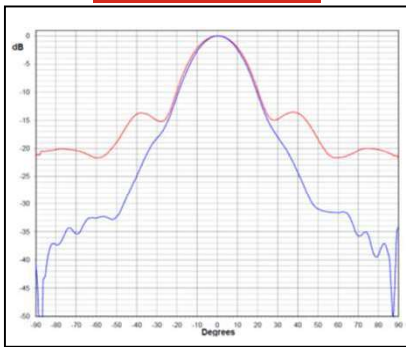
## Typical Antenna Gain / Factor

This is calculated by reference to standard gain horn antennas, and cross checked with reference to the antenna beamwidth, with an estimated error of +/- 0.8dB.

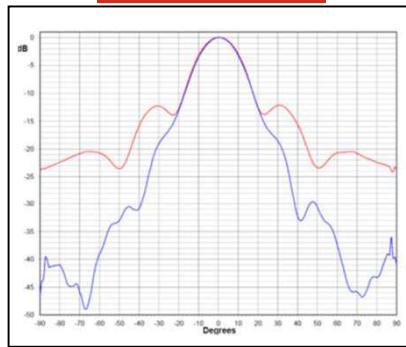




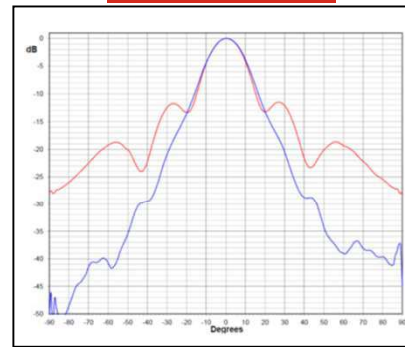
**15 GHz**



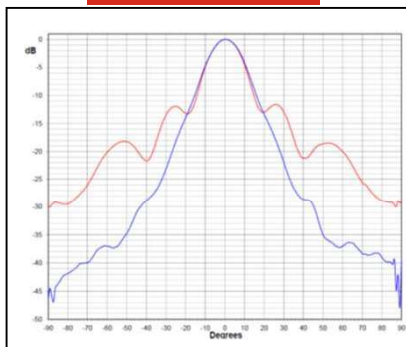
**17 GHz**



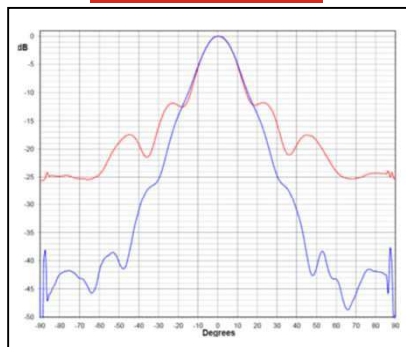
**19 GHz**



**20 GHz**



**22 GHz**



Red trace = E-plane, Blue trace = H-plane cut

