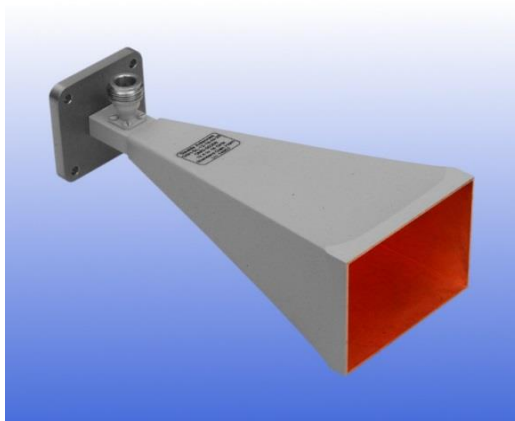


12 - 18 GHz Linearly Polarised 20 dBi Horn Antenna fitted with an N type Connector

Catalogue number **QSH-SL-12-18-N-20**

Q-par reference **QMS-00208**

Contents **Summary**
Typical Gain / Antenna Factor
Typical Beamwidth / Patterns
VSWR



Typical photograph. Finish according to customer specifications.

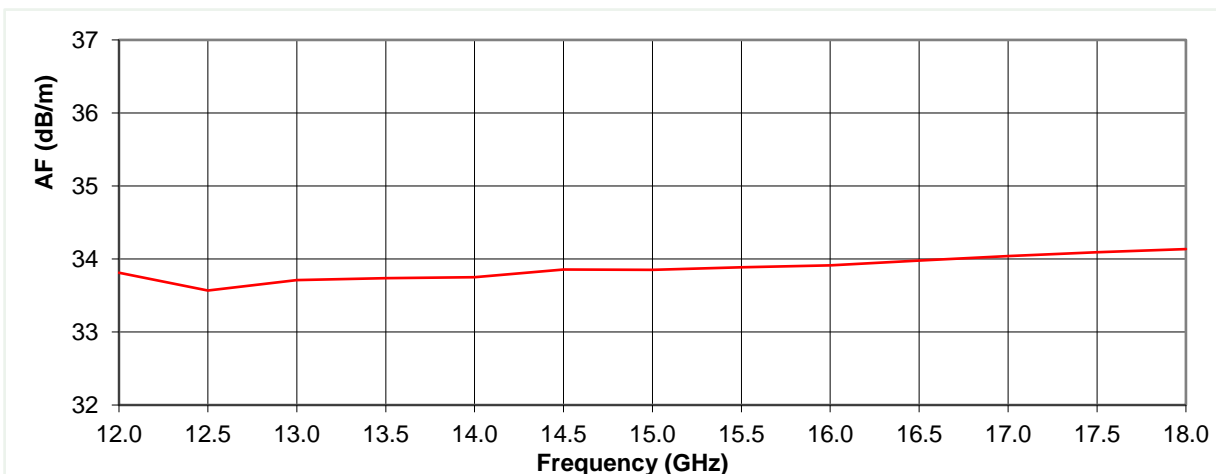
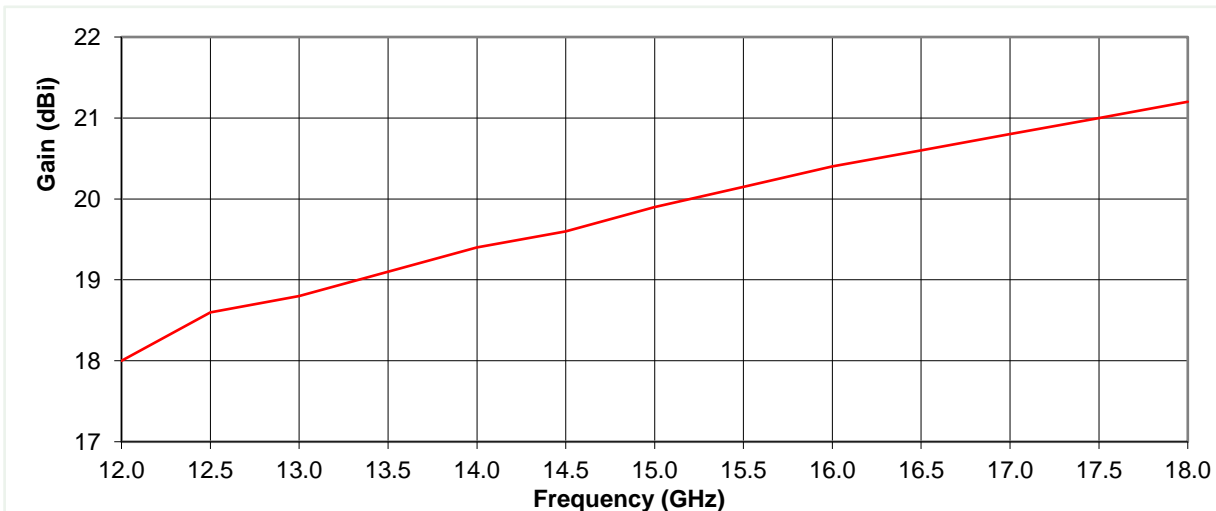


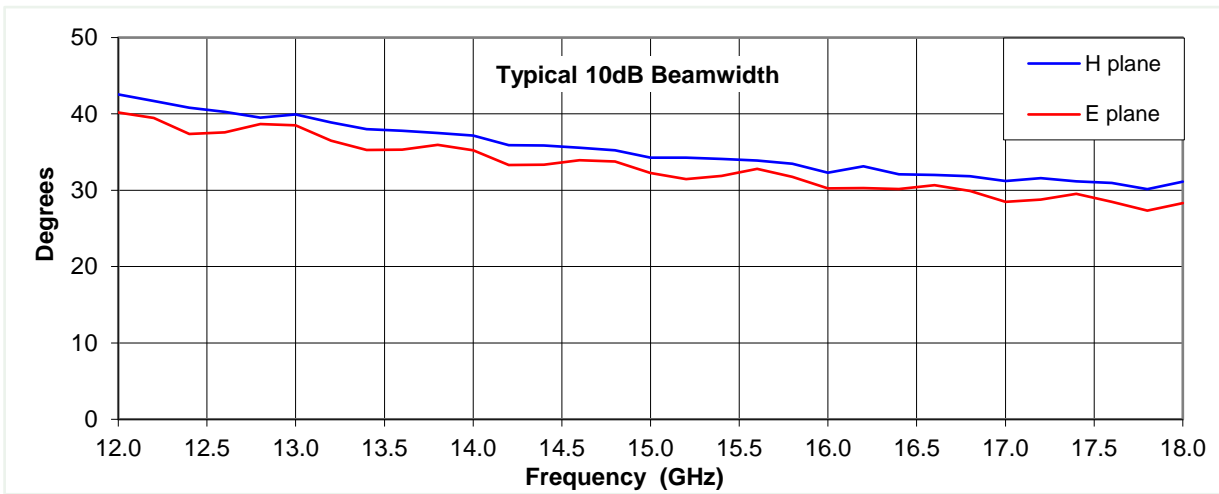
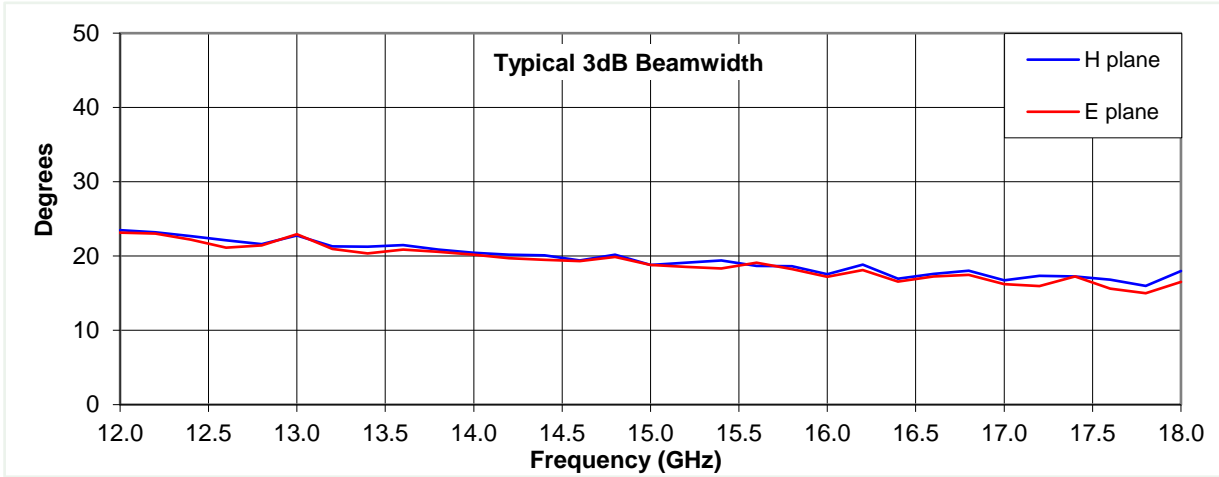
Typical Specification

Frequency	12 to 18 GHz
Connector Type	N type jack
Power Handling	60 Watt c.w.
VSWR	Typically < 1.4:1
Gain	18 to 21.2 dBi
Antenna Factor	33.6 to 34.1 dB/m
3dB Beamwidth	15 to 23 degrees
10dB Beamwidth	27 to 43 degrees
Weight	450 g nominal
Maximum Size	77 x 58 mm aperture x 178 mm long
Mounting	Mounting Plate 50 mm x 50 mm with 4 holes, diameter 4.1 mm, 38 mm centres.
Construction	Copper and brass horn, painted. Aluminium mount plate, anodised.

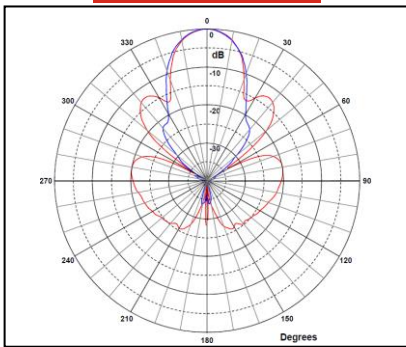
Typical Antenna Gain / Factor

This is calculated by reference to standard gain horn antennas, and cross checked with reference to the antenna beamwidth, with an estimated error of +/- 0.8dB.

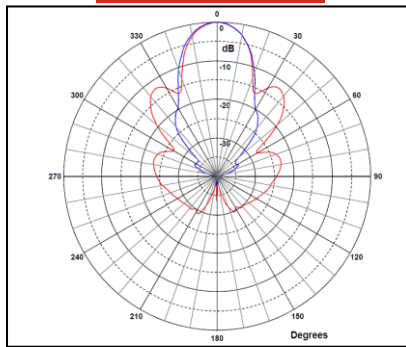




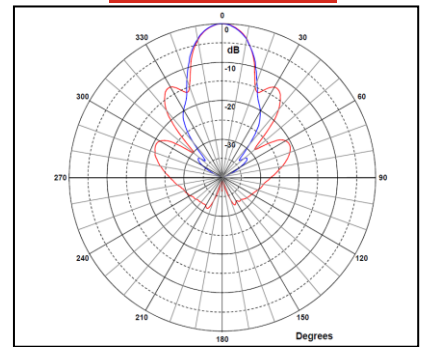
12.4 GHz



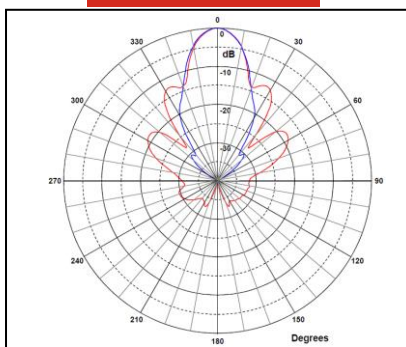
13.4 GHz



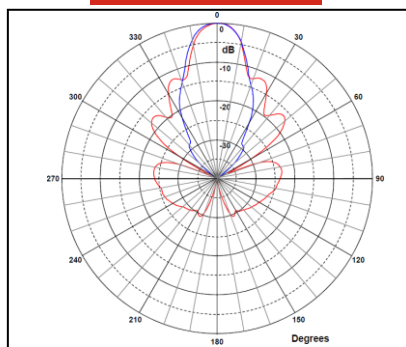
15 GHz



16.4 GHz



18 GHz



Red trace = E-plane, Blue trace = H-plane cut

