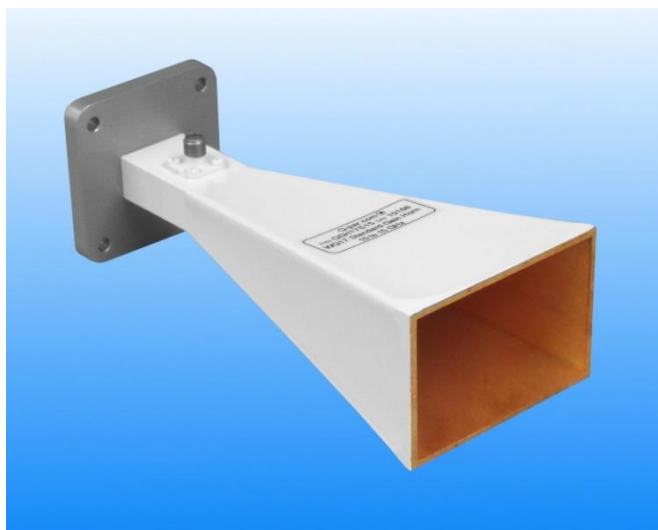


10 - 15 GHz Linearly Polarised 15 dBi Horn Antenna fitted with an SMA type Connector

Catalogue number **QSH-SL-10-15-S-15**

Steatite reference **QMS-00196**

Contents **Summary**
Typical Gain / Antenna Factor
Typical Beamwidth / Patterns
VSWR



QQD06-2 V7.3

PDM 05-Oct-18 6856

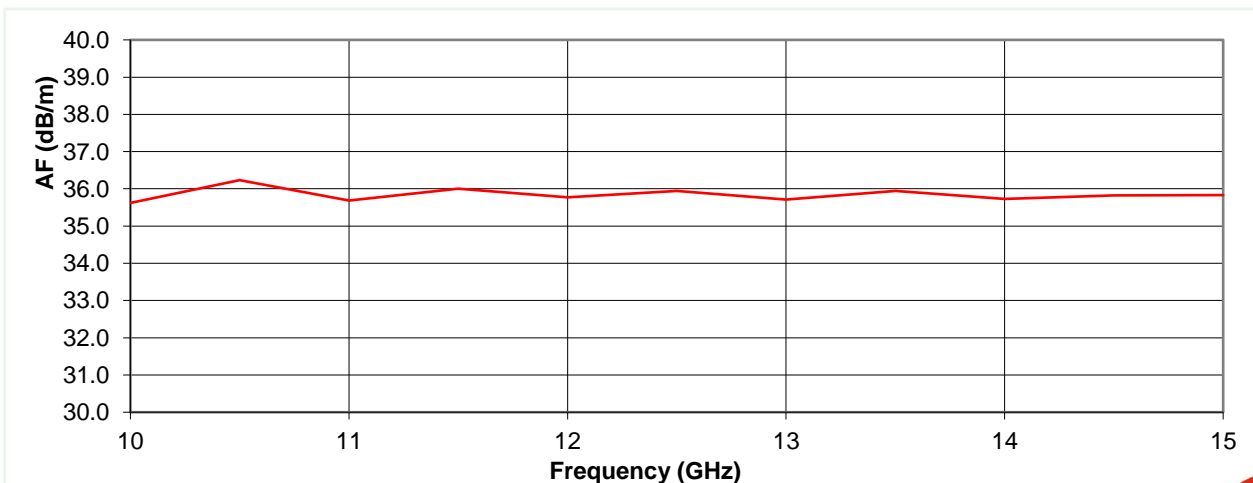
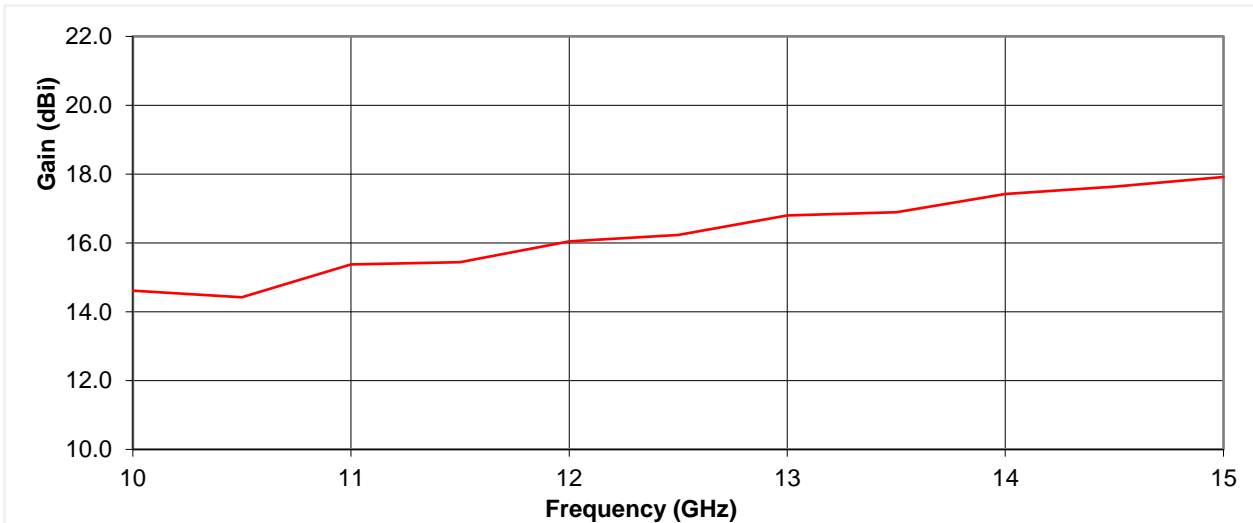


Typical Specification

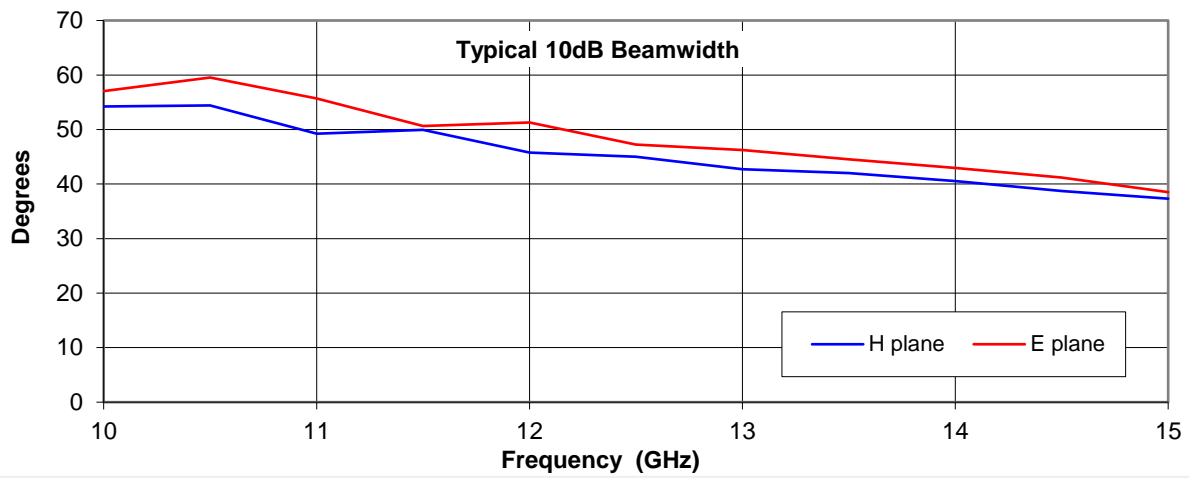
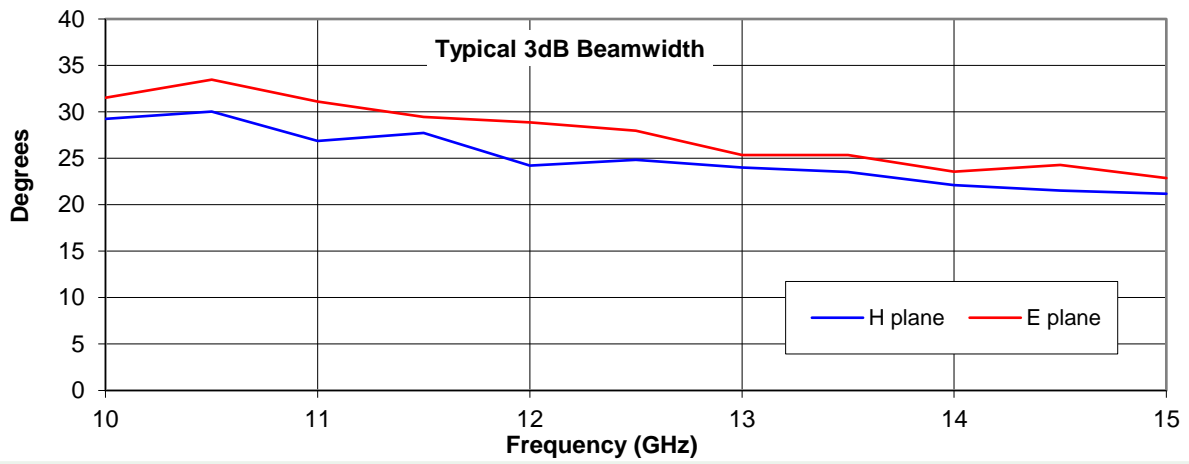
Frequency	10 to 15 GHz
Connector Type	SMA type jack
Power Handling	40 Watt c.w.
VSWR	< 1.3 :1
Gain	14.4 to 17.9 dBi
Antenna Factor	35.6 to 36.2 dB/m
3dB Beamwidth	21 to 33 degrees
10dB Beamwidth	37 to 60 degrees
Weight	400 g nominal
Maximum Size	65 mm x 45 mm external aperture x 147 mm long
Mounting	Mounting Plate 50 mm x 50 mm with 4 holes diameter 4.1 mm, on 38 mm centres
Construction	Electroformed copper painted horn with anodised aluminium mounting plate.

Typical Antenna Gain / Factor

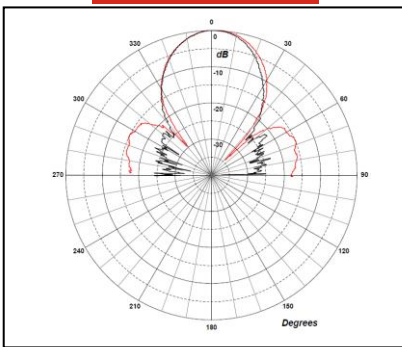
This is calculated by reference to standard gain horn antennas, and cross checked with reference to the antenna beamwidth, with an estimated error of +/- 0.8dB.



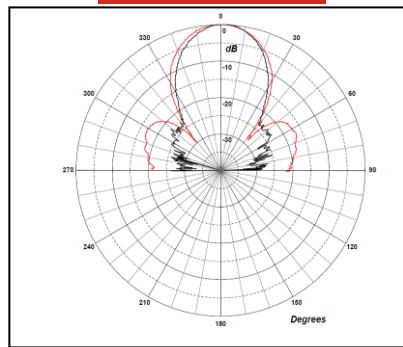
Typical Beamwidth / Radiation Patterns



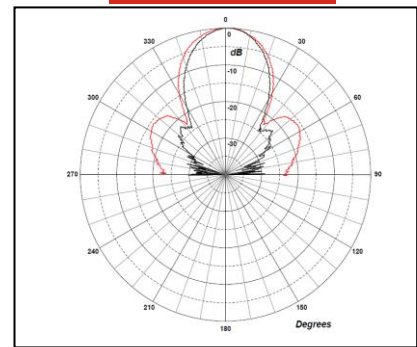
XX GHz



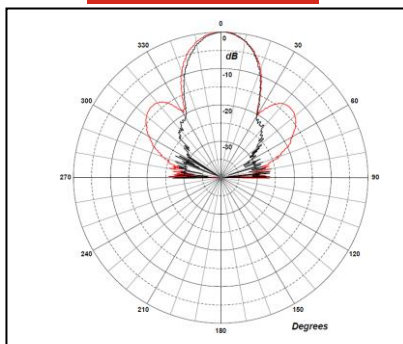
XX GHz



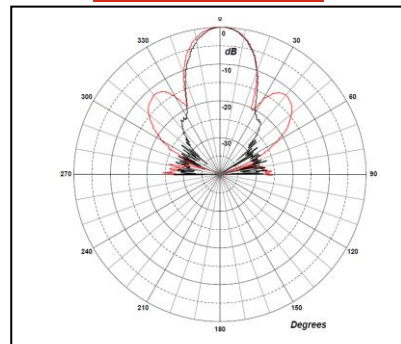
XX GHz



XX GHz



XX GHz



Red trace = E-plane, Blue trace = H-plane cut

