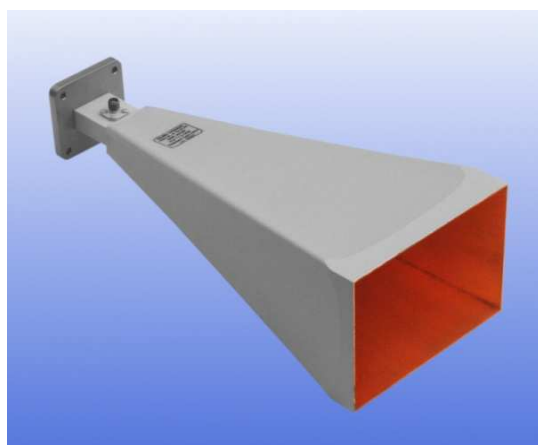


8 - 12 GHz Linearly Polarised 20 dBi Horn Antenna fitted with an SMA type Connector

Catalogue number **QSH-SL-8-12-S-20**

Q-par reference **QMS-00184**

Contents **Summary**
Typical Gain / Antenna Factor
Typical Beamwidth / Patterns
VSWR

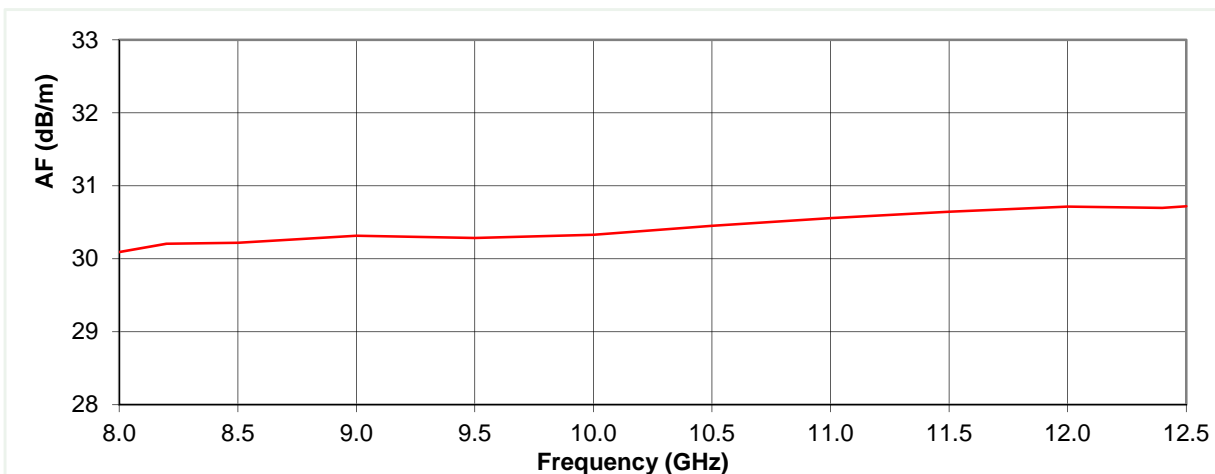
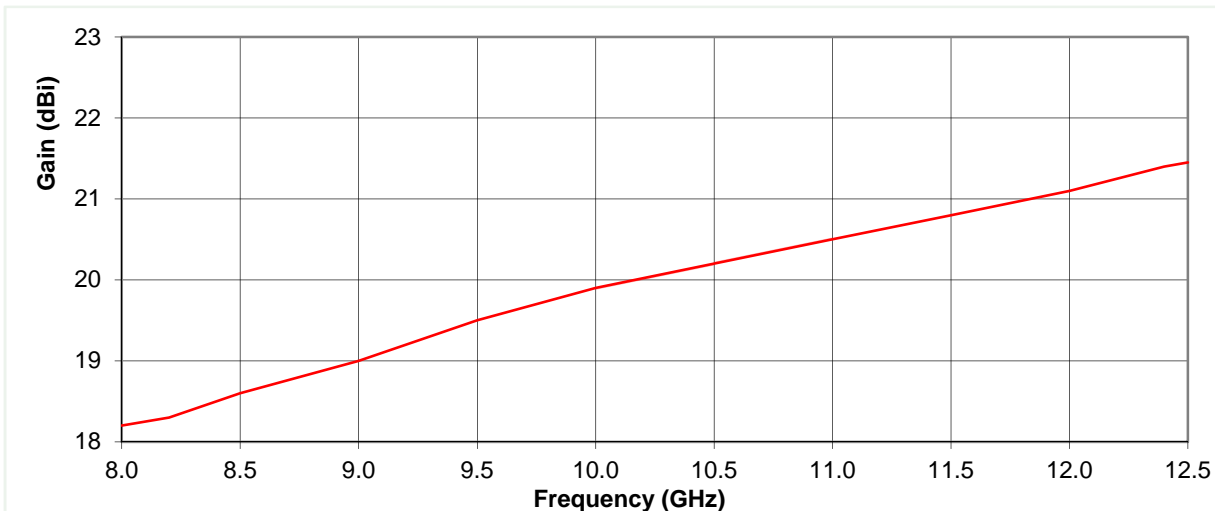


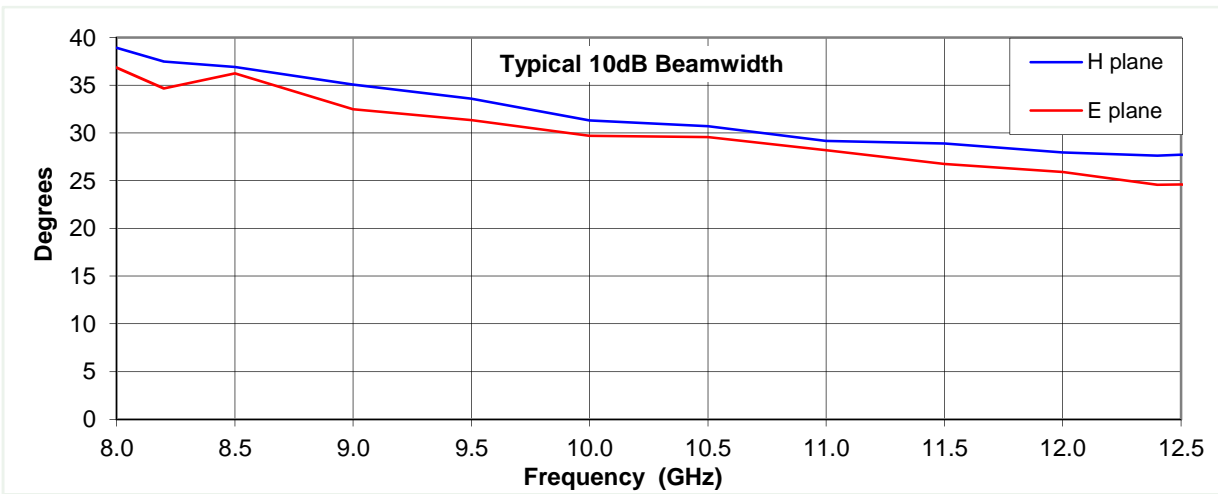
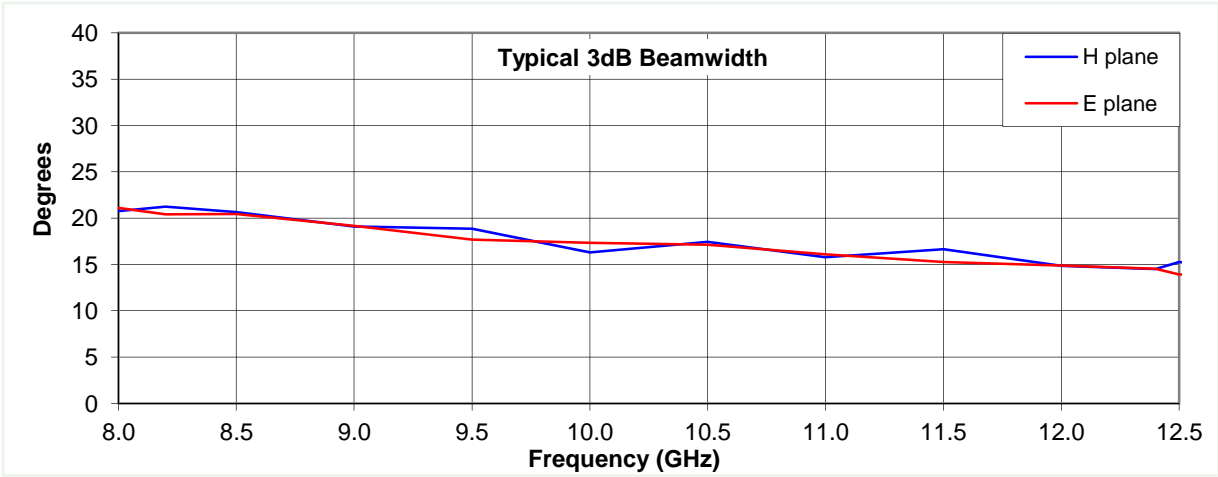
Typical Specification

Frequency	8 to 12.5 GHz
Connector Type	SMA type jack
Power Handling	45 Watt c.w.
VSWR	Typically < 1.3 :1
Gain	18.2 to 21.5 dBi
Antenna Factor	30.1 to 30.7 dB/m
3dB Beamwidth	14 to 21 degrees
10dB Beamwidth	24 to 39 degrees
Weight	1 kg nominal
Maximum Size	116 x 86 mm external aperture x 263 mm long
Mounting	Mounting Plate 50 mm x 50 mm with 4 holes, diameter 4.1 mm, on 38 mm centres.
Construction	Electroformed copper, painted. Anodised aluminium mounting plate.

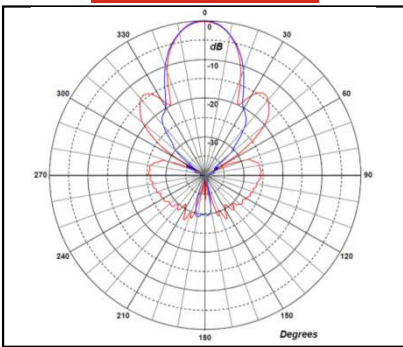
Typical Antenna Gain / Factor

This is calculated by reference to standard gain horn antennas, and cross checked with reference to the antenna beamwidth, with an estimated error of +/- 0.8dB.

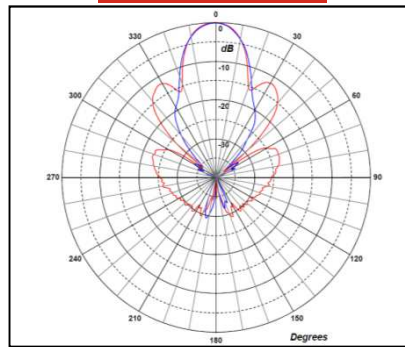




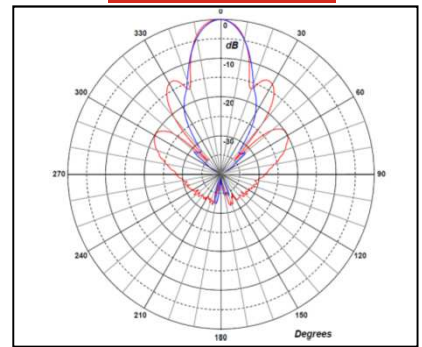
8 GHz



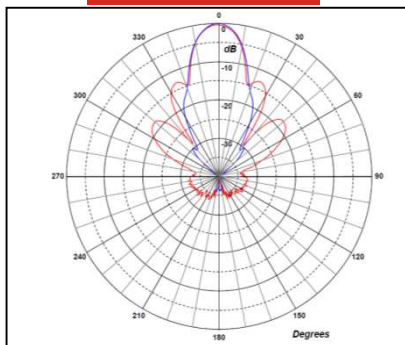
9 GHz



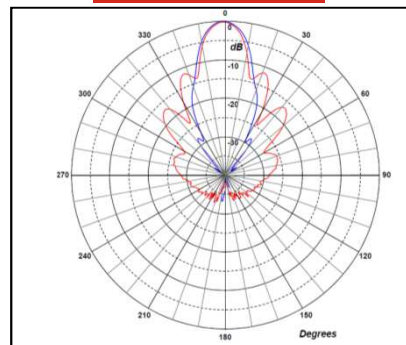
10 GHz



11 GHz



12.5 GHz



Red trace = E-plane, Blue trace = H-plane cut

