



# 8 - 12 GHz Linearly Polarised 23 dBi Horn Antenna fitted with a Waveguide Flange

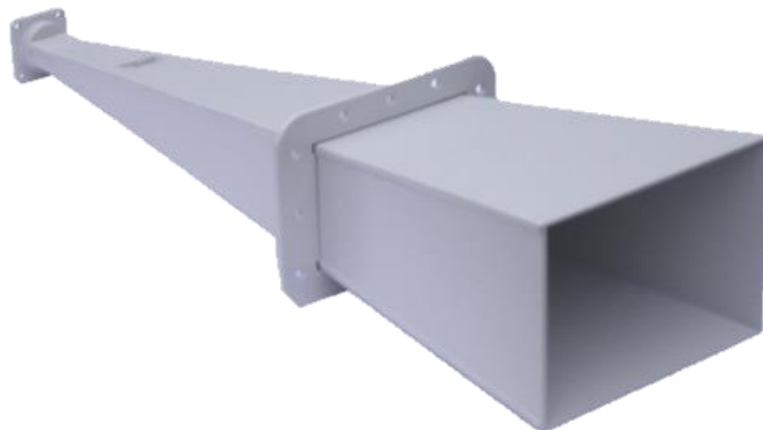
Catalogue number **QSH-SL-8-12-F-23**

Steatite reference **QMS-00171**

Contents **Summary**

**Typical Gain / Antenna Factor - at 1 Metre**

**Typical Beamwidth / Patterns - at 1 Metre**

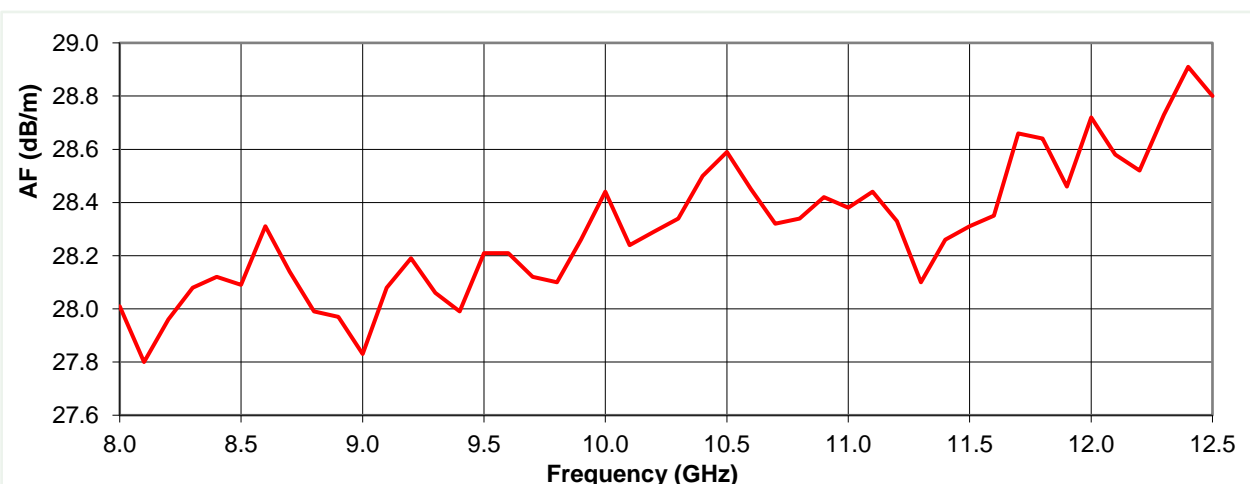
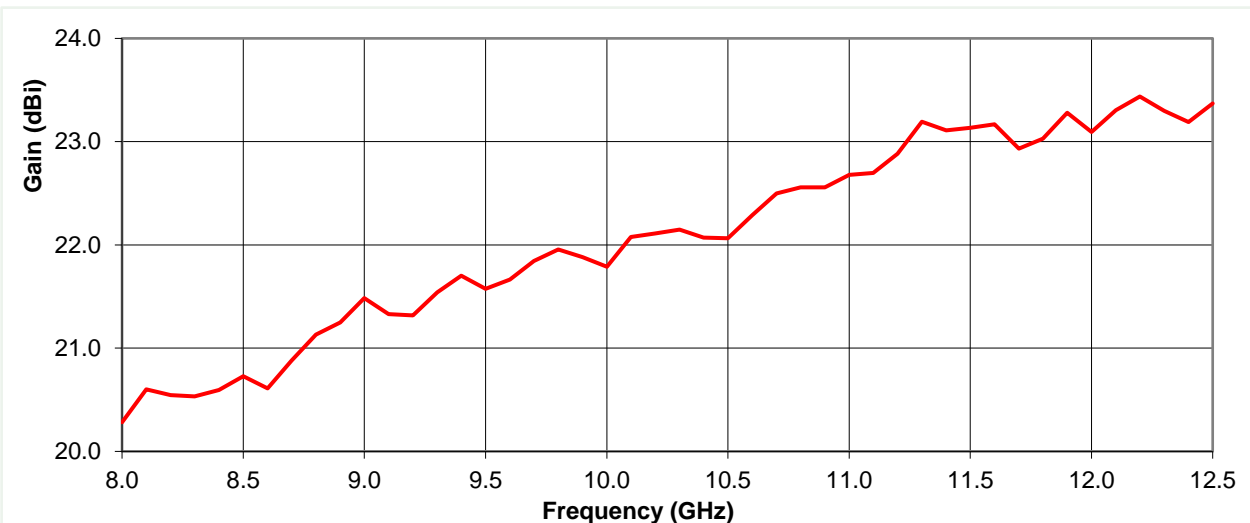


## Typical Specification

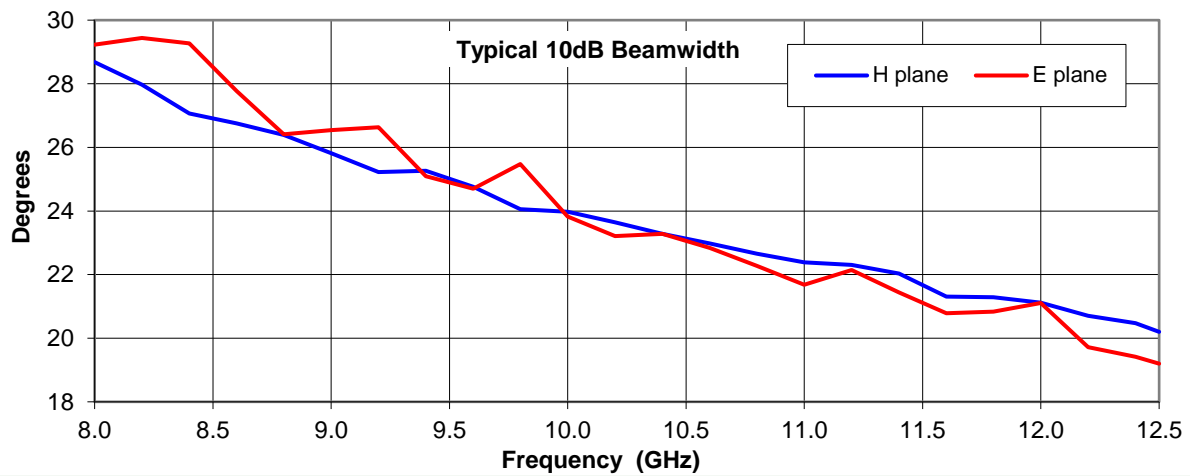
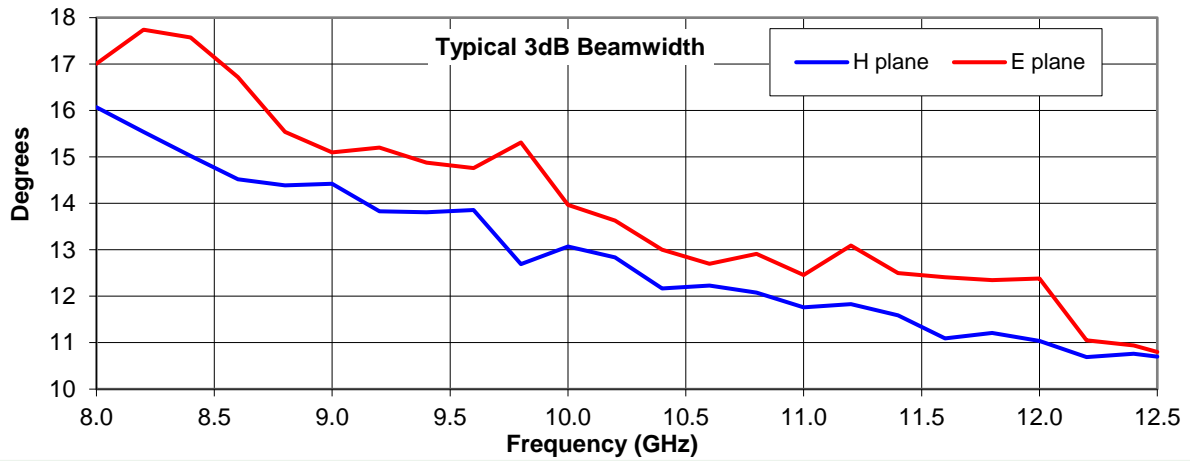
<b>Frequency</b>	8 to 12.5 GHz
<b>Connector Type</b>	UBR100 waveguide Flange
<b>Power Handling</b>	10 kW c.w.
<b>VSWR</b>	< 1.15 :1
<b>Gain</b>	20.5 to 23.4 dBi
<b>Antenna Factor</b>	27.8 to 28.9 dB/m
<b>3dB Beamwidth</b>	11 to 18 degrees
<b>10dB Beamwidth</b>	19 to 29 degrees
<b>Weight</b>	1.2 kg nominal
<b>Maximum Size</b>	169 x 112 mm external aperture x 531 mm long
<b>Mounting</b>	12 holes, diameter 6 mm, 35 mm centres
<b>Construction</b>	Welded aluminium, powdercoat finish.

## Typical Antenna Gain / Factor - at 1 Metre

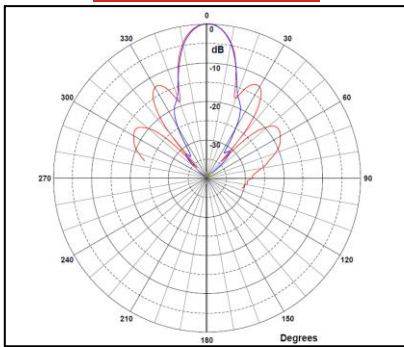
This is calculated by reference to standard gain horn antennas, and cross checked with reference to the antenna beamwidth, with an estimated error of +/- 0.8dB.



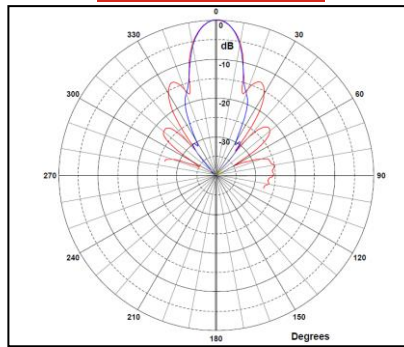
## Typical Beamwidth / Radiation Patterns - at 1 Metre



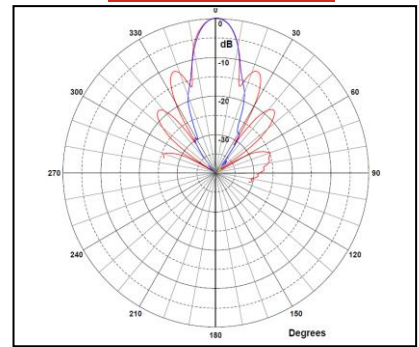
8 GHz



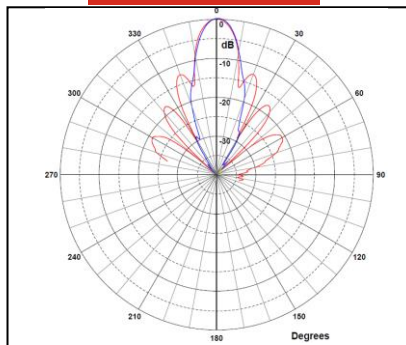
9 GHz



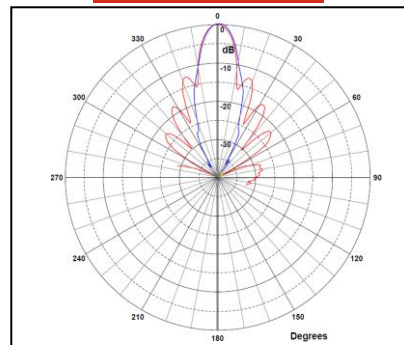
10 GHz



11 GHz



12.4 GHz



Red trace = E-plane, Blue trace = H-plane cut

