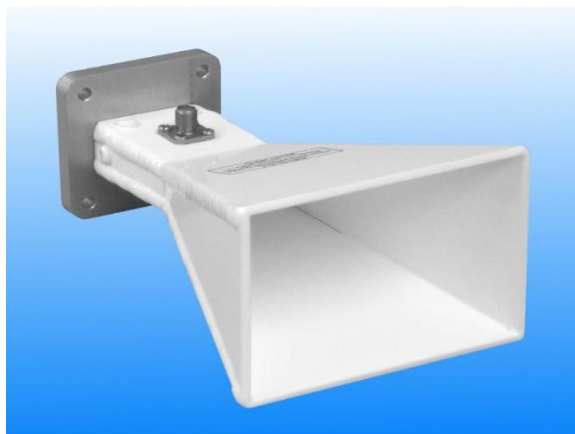


## 7 - 10 GHz Linearly Polarised 15 dBi Horn Antenna fitted with an SMA type Connector

Catalogue number **QSH-SL-7-10-S-15**

Steatite reference **QMS-00162**

Contents **Summary**  
**Typical Gain / Antenna Factor**  
**Typical Beamwidth / Patterns**

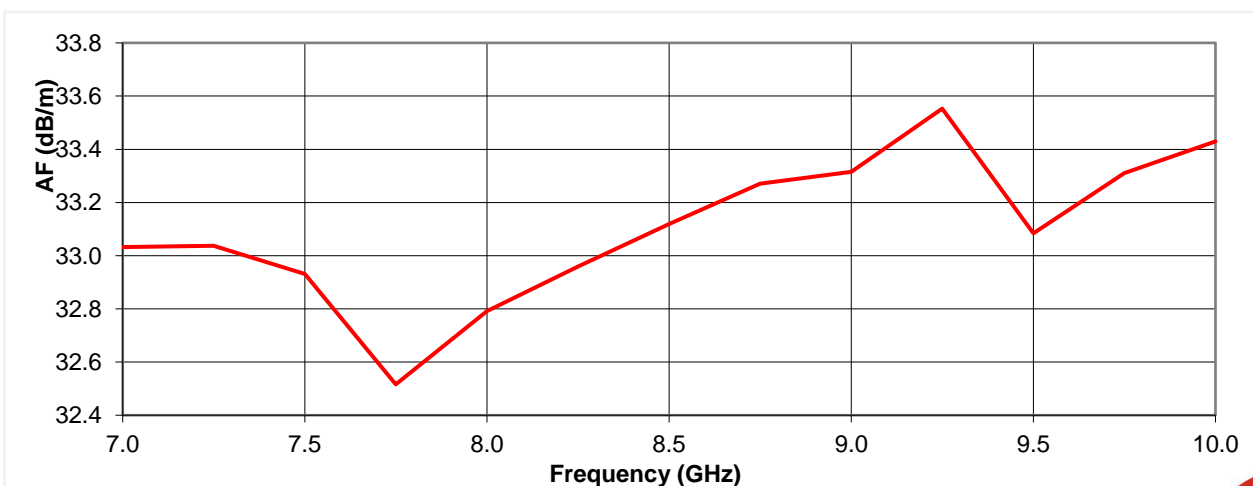
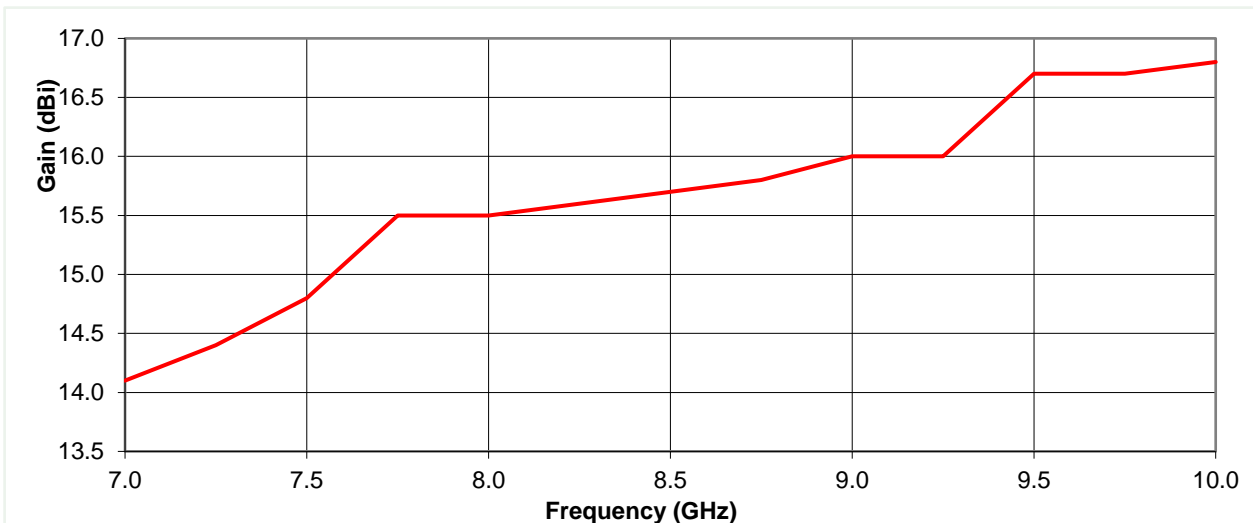


## Typical Specification

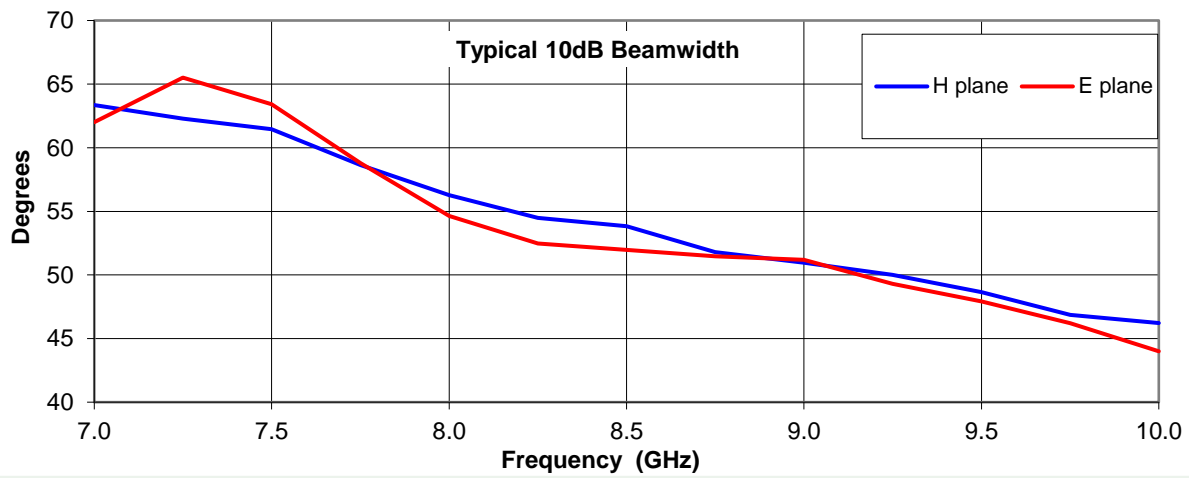
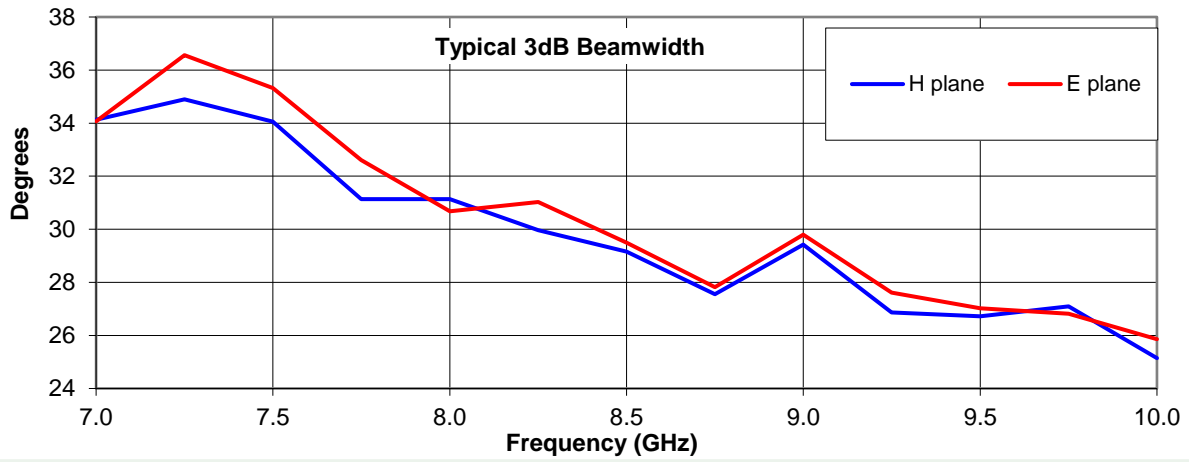
<b>Frequency</b>	7 to 10 GHz
<b>Connector Type</b>	SMA type jack
<b>Power Handling</b>	50 Watt c.w.
<b>VSWR</b>	< 1.4:1
<b>Gain</b>	14.1 to 16.8 dBi
<b>Antenna Factor</b>	32.5 to 33.6 dB/m
<b>3dB Beamwidth</b>	25 to 37 degrees
<b>10dB Beamwidth</b>	44 to 66 degrees
<b>Weight</b>	220 g nominal
<b>Maximum Size</b>	89 mm x 65 mm external aperture x 131 mm long
<b>Mounting</b>	Mounting Plate with 4 holes, diameter 4.1 mm, 38 mm centres
<b>Construction</b>	Welded aluminium. Painted.

## Typical Antenna Gain / Factor

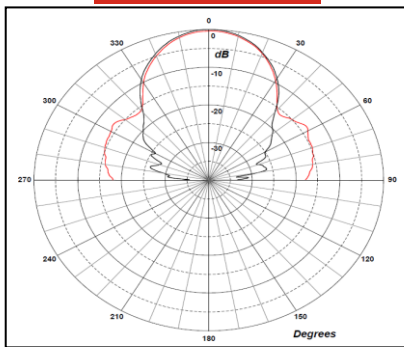
This is calculated by reference to standard gain horn antennas, and cross checked with reference to the antenna beamwidth, with an estimated error of +/- 0.8dB.



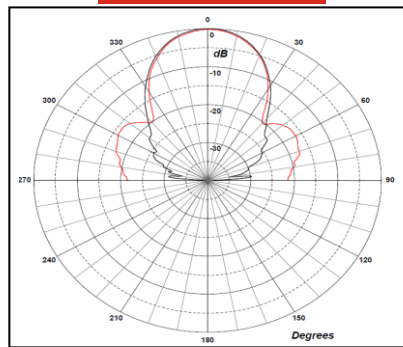
**Typical Beamwidth / Radiation Patterns**



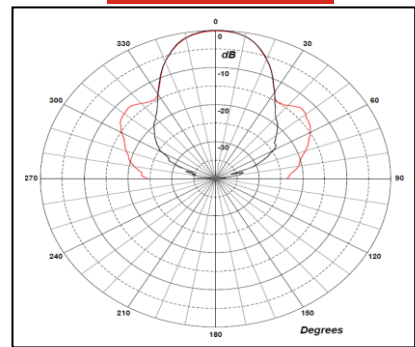
**7 GHz**



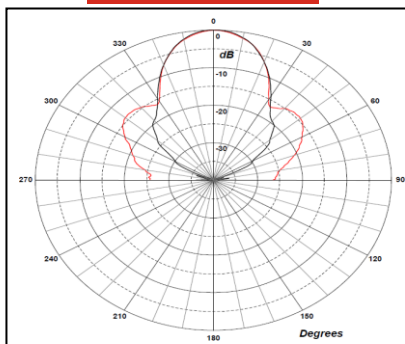
**8 GHz**



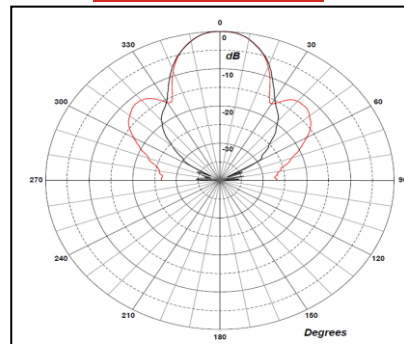
**9 GHz**



**9.5 GHz**



**10 GHz**



Red trace = E-plane, Black trace = H-plane cut

