

Standard Gain Horn Antenna

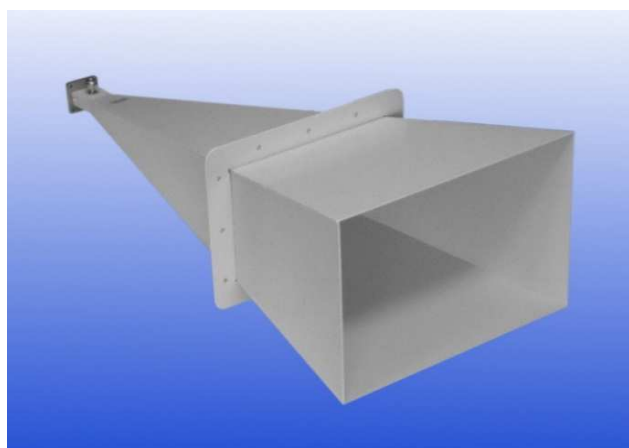
5.8 to 8.2 GHz

WG14 R70 WR137

Catalogue number: **QSH-SL-6-8-N-24**

Q-par reference: **QMS-00155**

Contents: **Summary**
Typical Gain / Antenna Factor
Typical Beamwidth / Patterns
VSWR



Test Report

sd 05/06/2014 5232

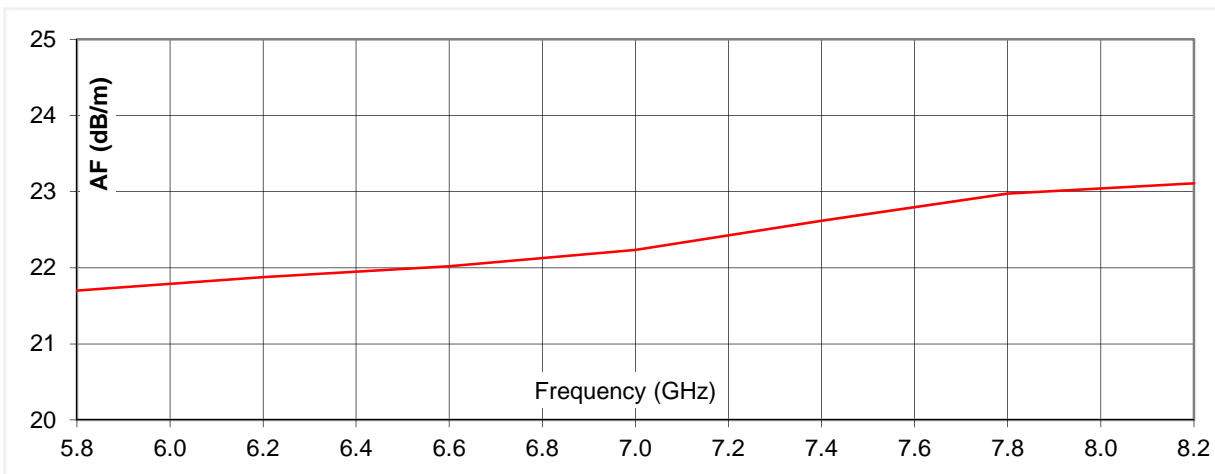
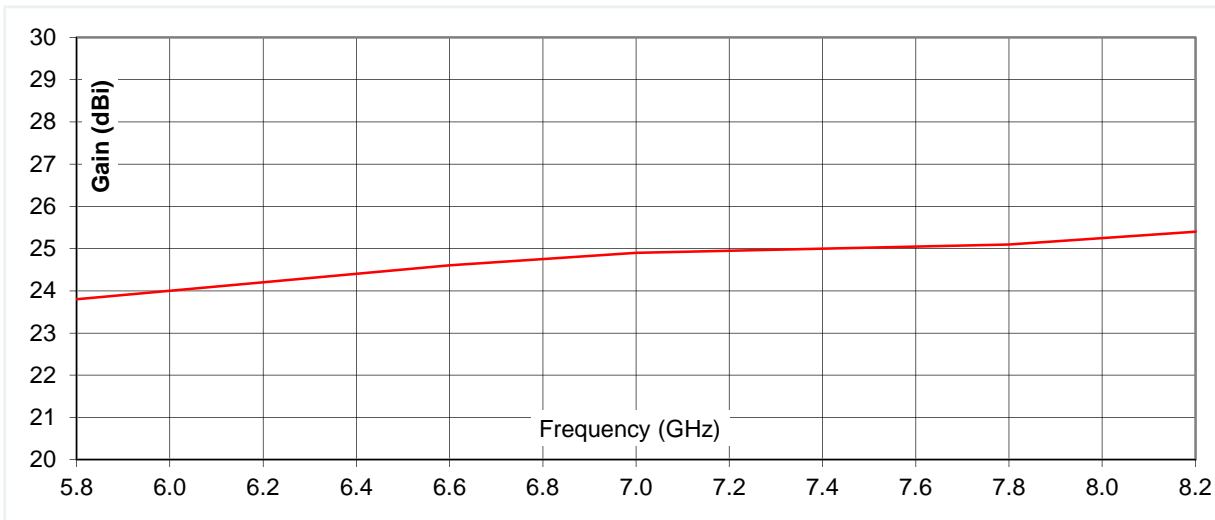


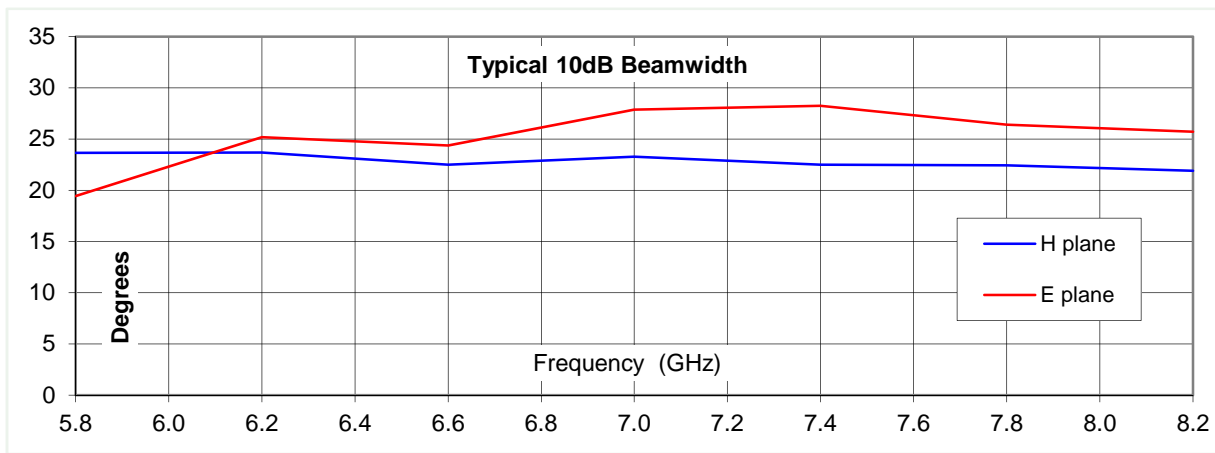
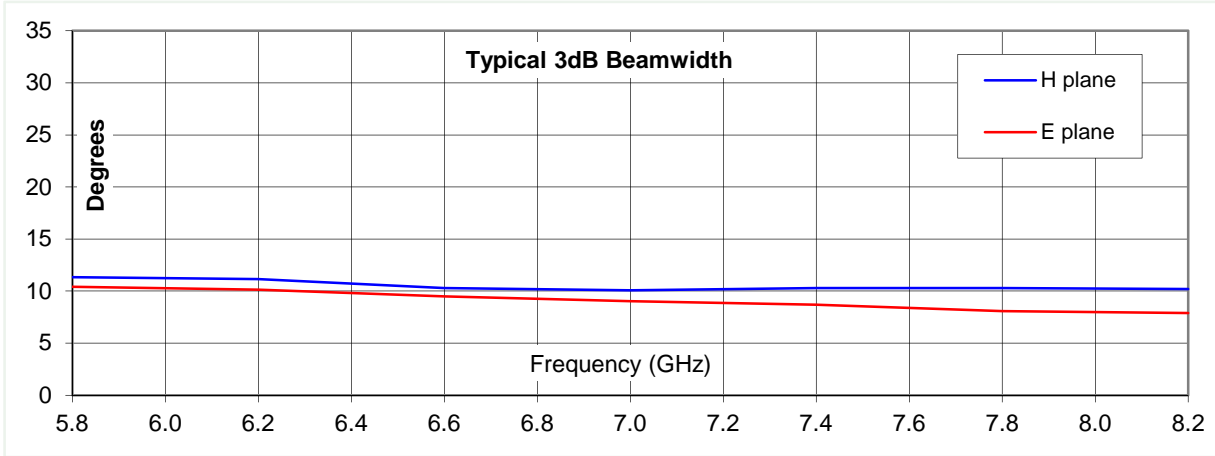
Typical Specification

Frequency	5.8 to 8.2 GHz
Connector type	N type jack
Power Handling	100 Watt c.w.
VSWR	< 1.5:1
Gain	23.6 to 25.3 dBi
Antenna Factor	21.7 to 23.1 dB/m
3dB Beamwidth	8 to 11 degrees
10dB Beamwidth	19 to 28 degrees
Weight	3.7 kg nominal
Size- max.	356 x 255 mm external aperture x 750 mm long
Mounting	Rear mount plate with 4 holes, diameter 4, 38 mm centres. Plus rectangular flange with 12 holes, diameter 6 mm, 75 mm centres
Construction	Welded aluminium, powdercoat finish

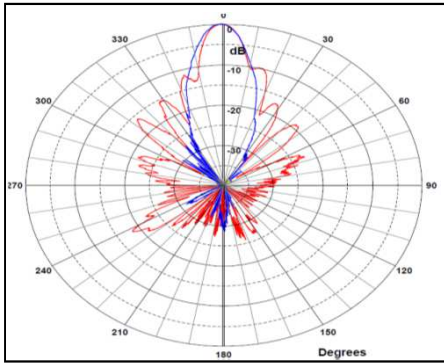
Typical Antenna Gain / Factor

This is calculated by reference to standard gain horn antennas, and cross checked with reference to the antenna beamwidth, with an estimated error of +/- 0.8dB.

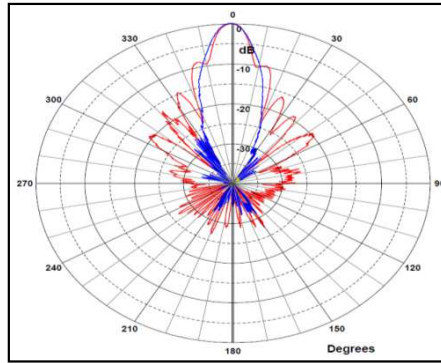




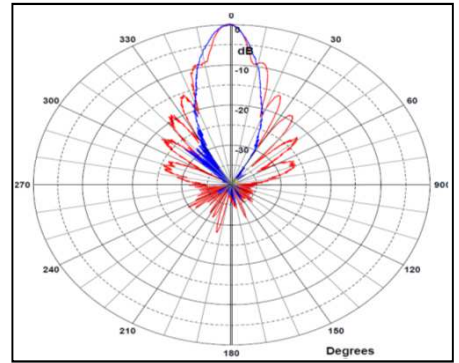
5.8 GHz



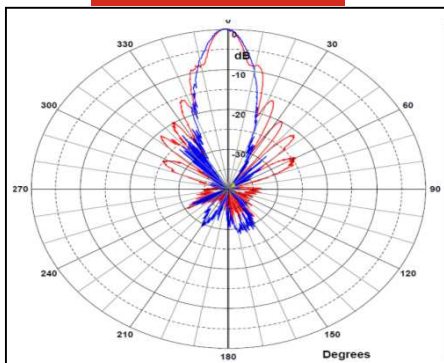
6.6 GHz



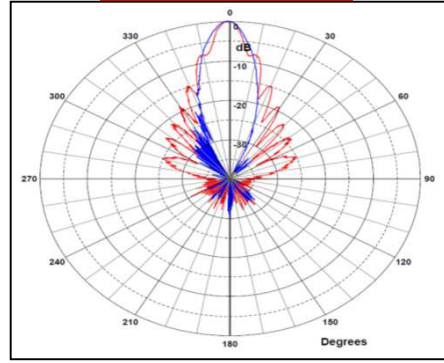
7 GHz



7.4 GHz



8.2 GHz



Red trace = E-plane, Blue trace = H-plane cut