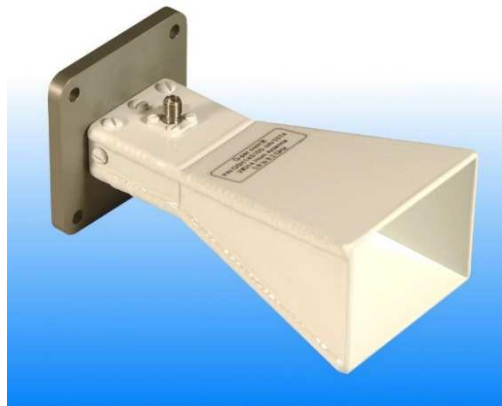


## 6 - 8 GHz Linearly Polarised 10 dBi Horn Antenna fitted with an SMA type Connector

Catalogue number **QSH-SL-6-8-S-10**

Q-par reference **QMS-00150**

Contents **Summary**  
**Typical Gain / Antenna Factor**  
**Typical Beamwidth / Patterns**  
**VSWR**



Typical photograph. Finish according to customer specifications.

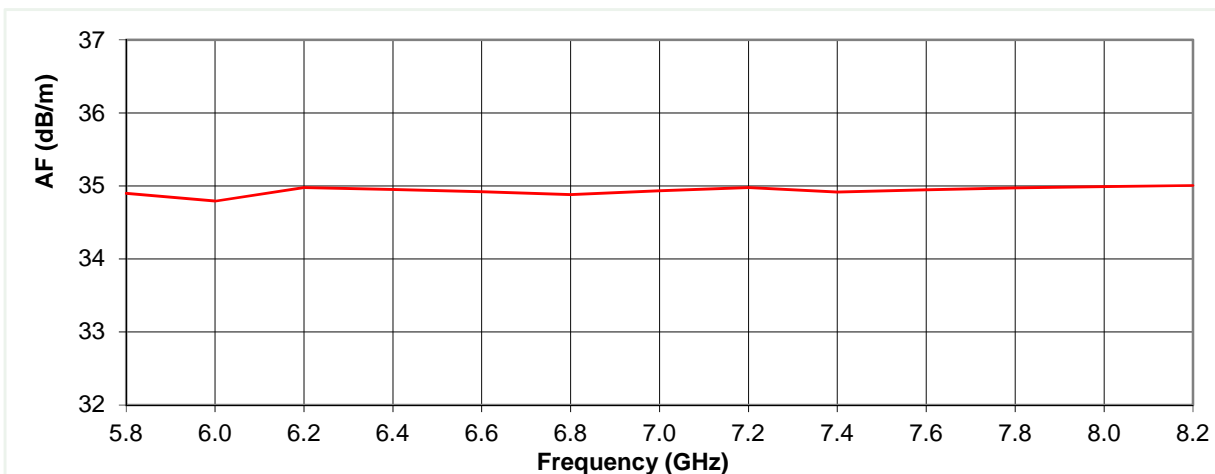
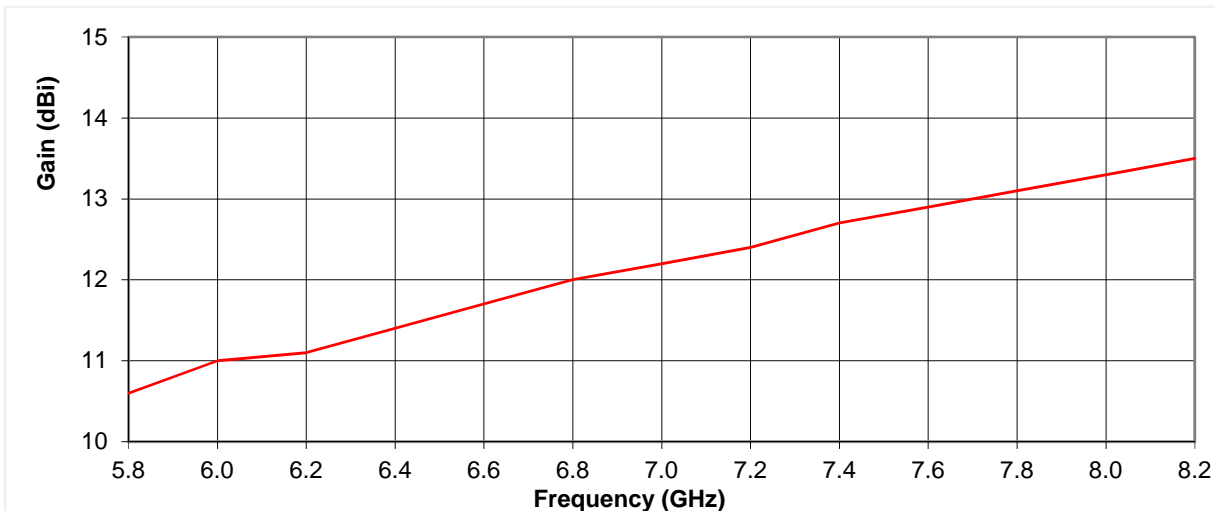


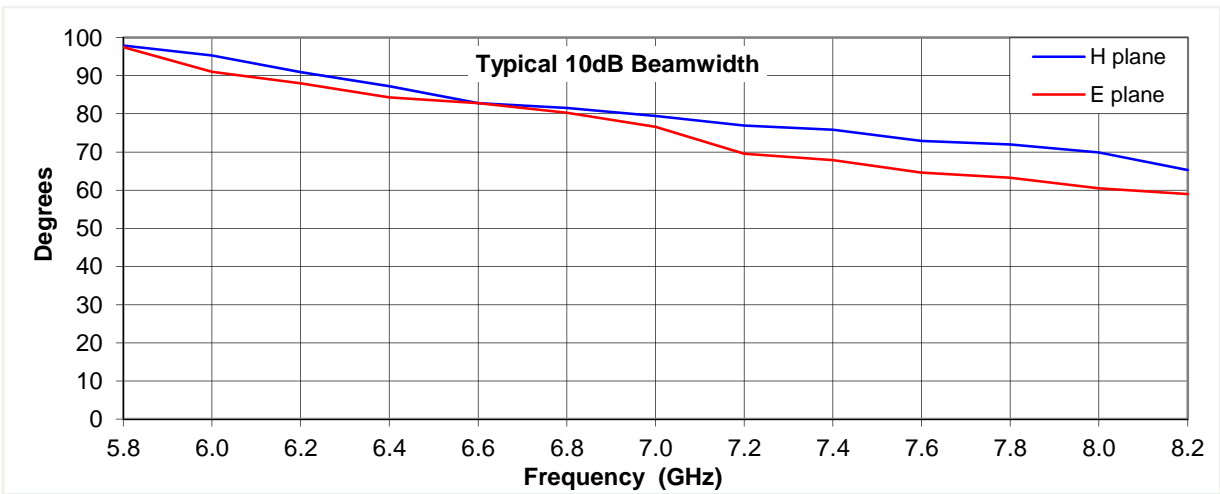
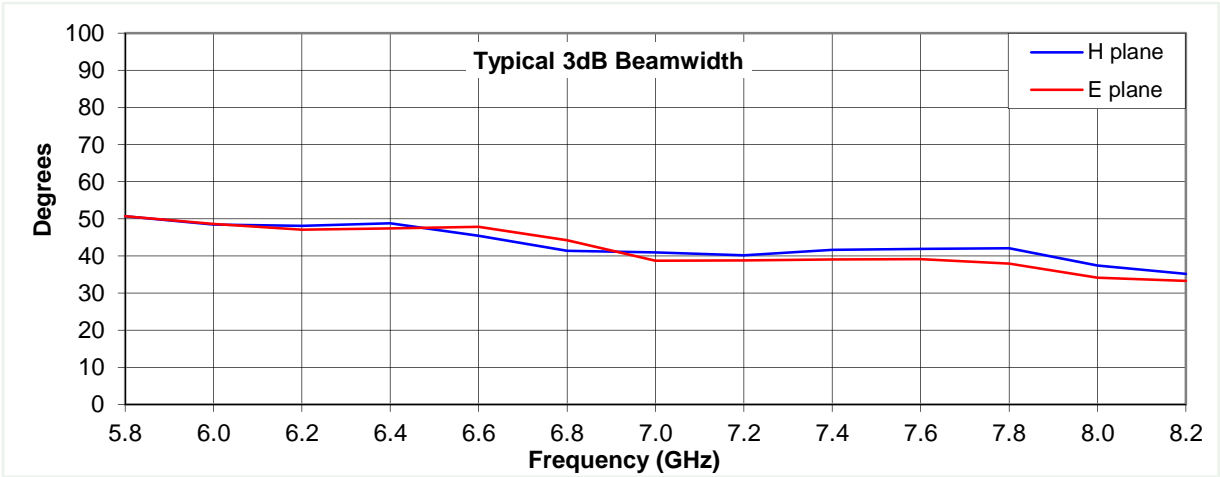
## Typical Specification

<b>Frequency</b>	5.8 to 8.2 GHz
<b>Connector Type</b>	SMA type jack
<b>Power Handling</b>	50 Watt c.w.
<b>VSWR</b>	Typically < 1.4 :1
<b>Gain</b>	10.6 to 13.5 dBi
<b>Antenna Factor</b>	34.8 to 35 dB/m
<b>3dB Beamwidth</b>	33 to 51 degrees
<b>10dB Beamwidth</b>	59 to 98 degrees
<b>Weight</b>	200 g nominal
<b>Maximum Size</b>	69 x 53 mm external aperture x 127 mm long
<b>Mounting</b>	Mounting Plate 50 mm x 50 mm with 4 holes, diameter 4.1 mm, on 38 mm centres
<b>Construction</b>	Welded aluminium horn, painted. Anodised aluminium mount plate

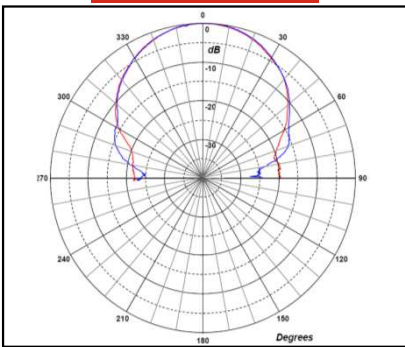
## Typical Antenna Gain / Factor

This is calculated by reference to standard gain horn antennas, and cross checked with reference to the antenna beamwidth, with an estimated error of +/- 0.8dB.

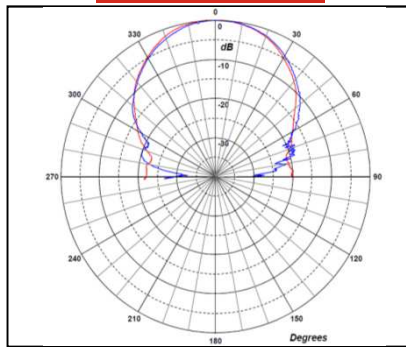




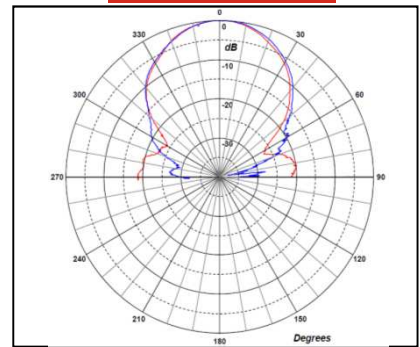
**5.8 GHz**



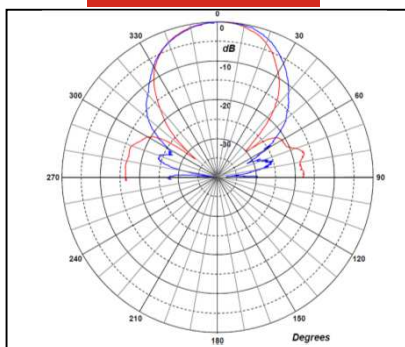
**6.2 GHz**



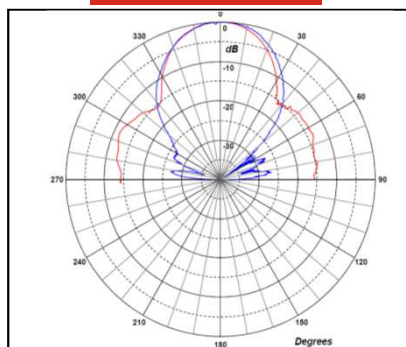
**7 GHz**



**7.6 GHz**



**8.2 GHz**



Red trace = E-plane, Blue trace = H-plane cut

