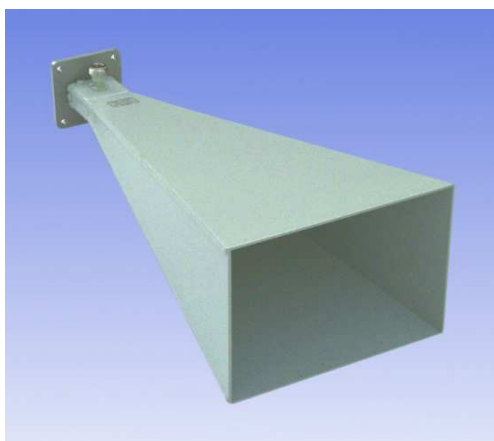


## 6 - 8 GHz Linearly Polarised 20 dBi Horn Antenna fitted with an N type Connector

Catalogue number **QSH-SL-6-8-N-20**

Q-par reference **QMS-00149**

Contents **Summary**  
**Typical Gain / Antenna Factor**  
**Typical Beamwidth / Patterns**  
**VSWR**

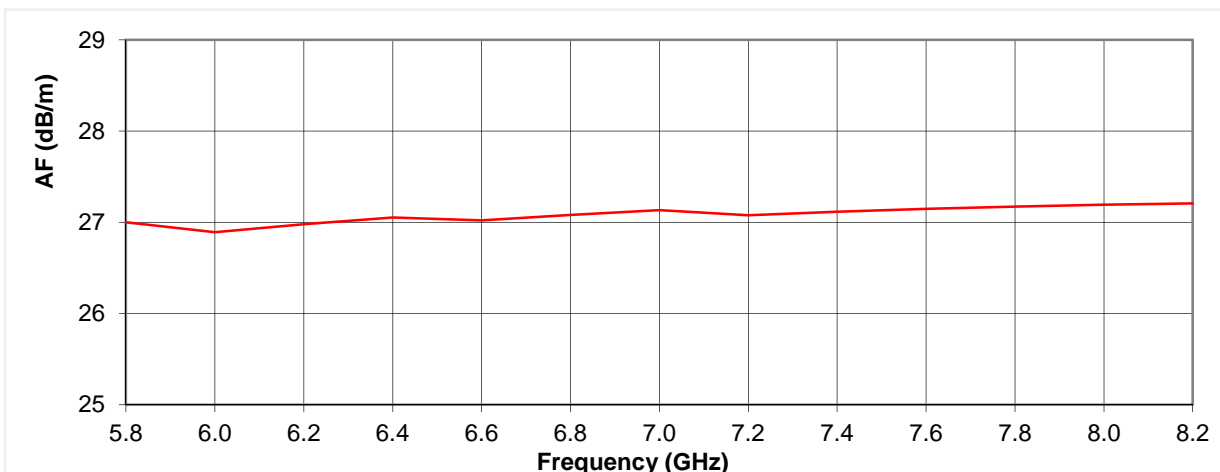
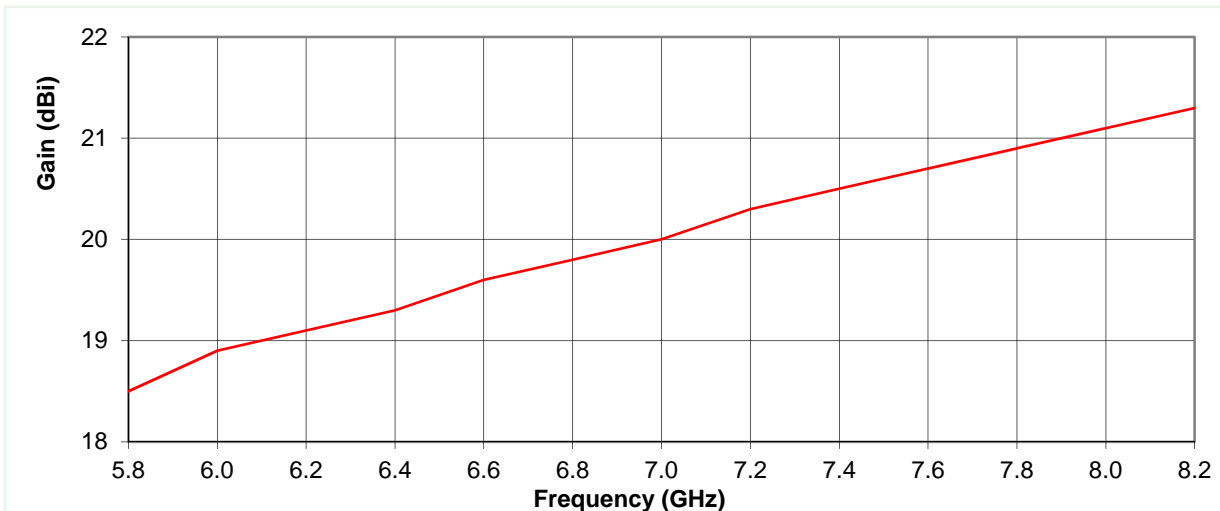


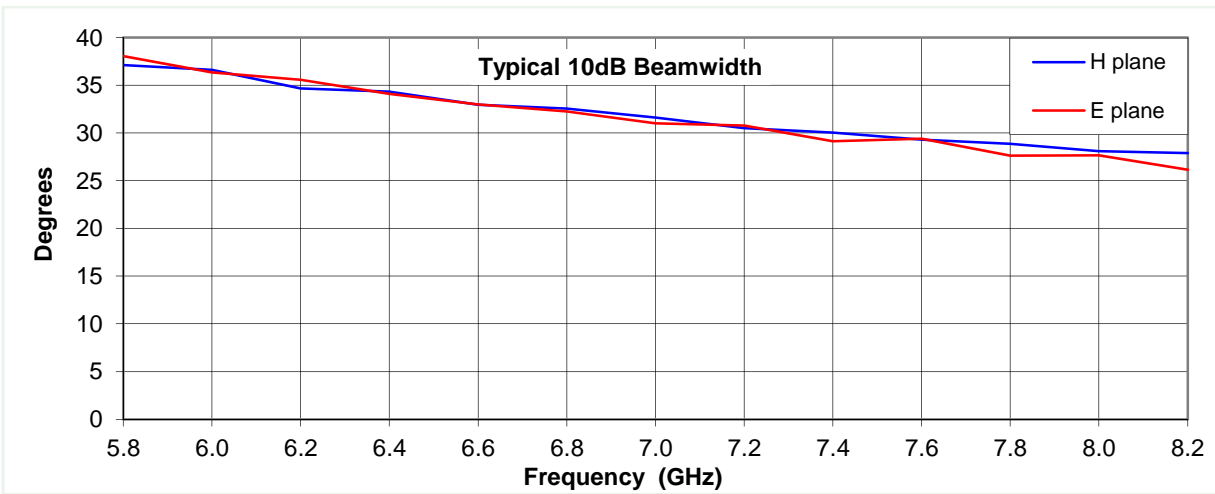
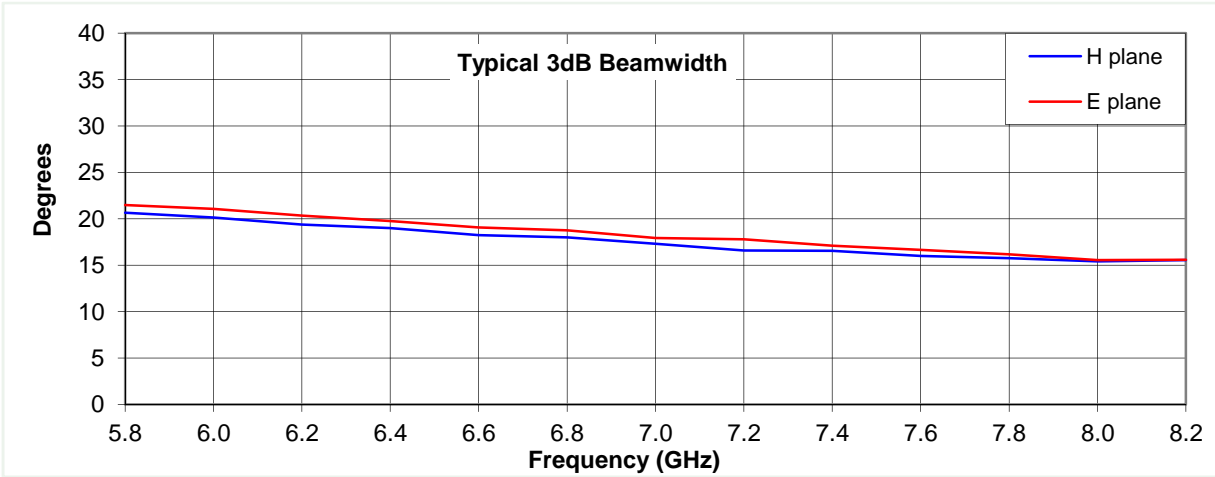
## Typical Specification

<b>Frequency</b>	5.8 to 8.2 GHz
<b>Connector Type</b>	N type jack
<b>Power Handling</b>	100 Watt c.w.
<b>VSWR</b>	Typically <1.5:1
<b>Gain</b>	18.5 to 21.3 dBi
<b>Antenna Factor</b>	26.9 to 27.2 dB/m
<b>3dB Beamwidth</b>	15 to 21 degrees
<b>10dB Beamwidth</b>	26 to 38 degrees
<b>Weight</b>	0.9 kg nominal
<b>Maximum Size</b>	176 x 122 mm external aperture x 398 mm long
<b>Mounting</b>	Rear mount plate with 4 holes, diameter 5.1 mm, 50 mm centres
<b>Construction</b>	Welded aluminium, painted. Stainless steel connector.

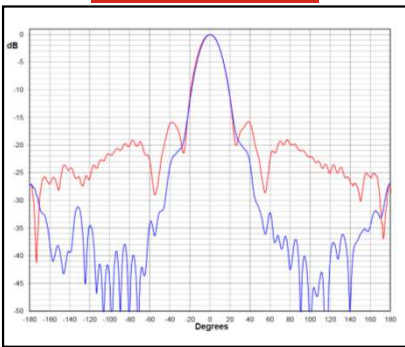
## Typical Antenna Gain / Factor

This is calculated by reference to standard gain horn antennas, and cross checked with reference to the antenna beamwidth, with an estimated error of +/- 0.8dB.

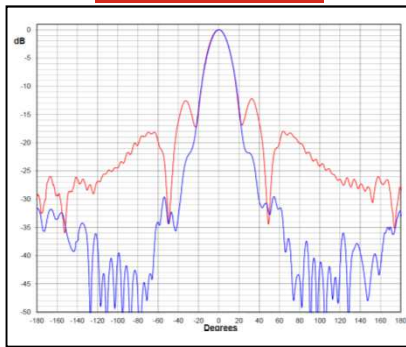




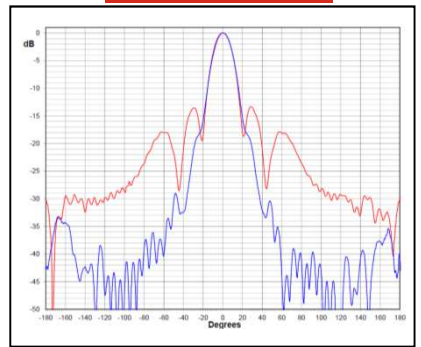
**5.8 GHz**



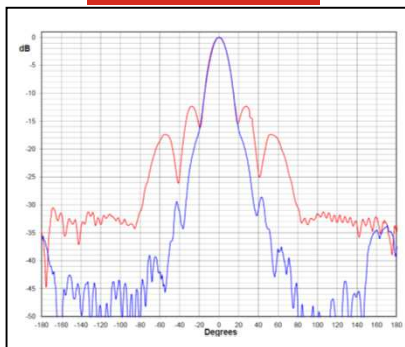
**6.4 GHz**



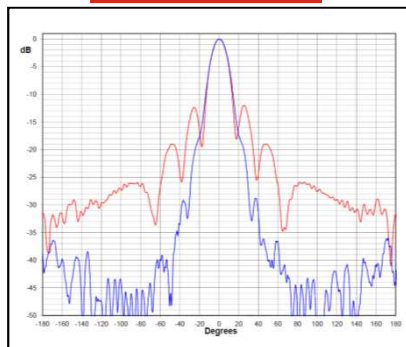
**7.0 GHz**



**7.6 GHz**



**8.2 GHz**



Red trace = E-plane, Blue trace = H-plane cut

