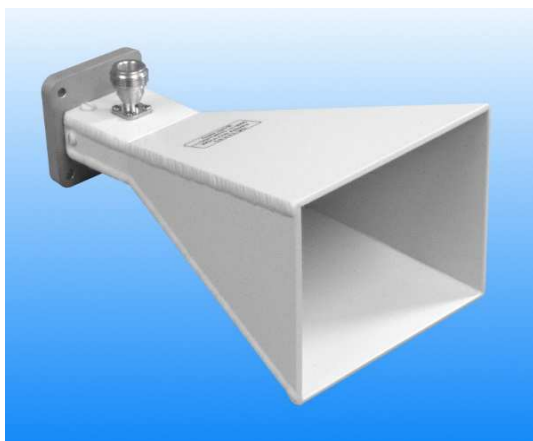


6 - 8 GHz Linearly Polarised 15 dBi Horn Antenna fitted with an N type Connector

Catalogue number **QSH-SL-6-8-N-15**

Q-par reference **QMS-00148**

Contents **Summary**
Typical Gain / Antenna Factor
Typical Beamwidth / Patterns
VSWR

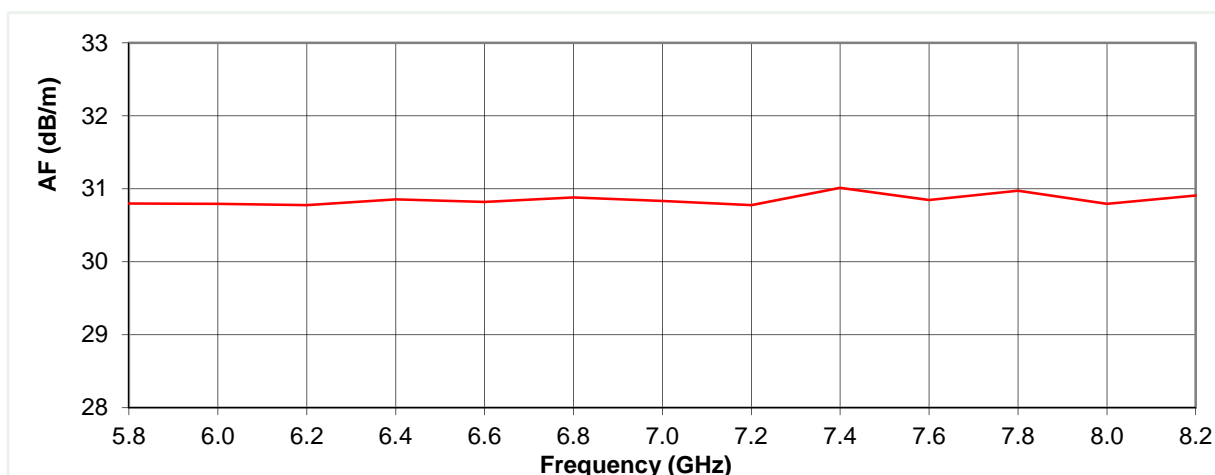
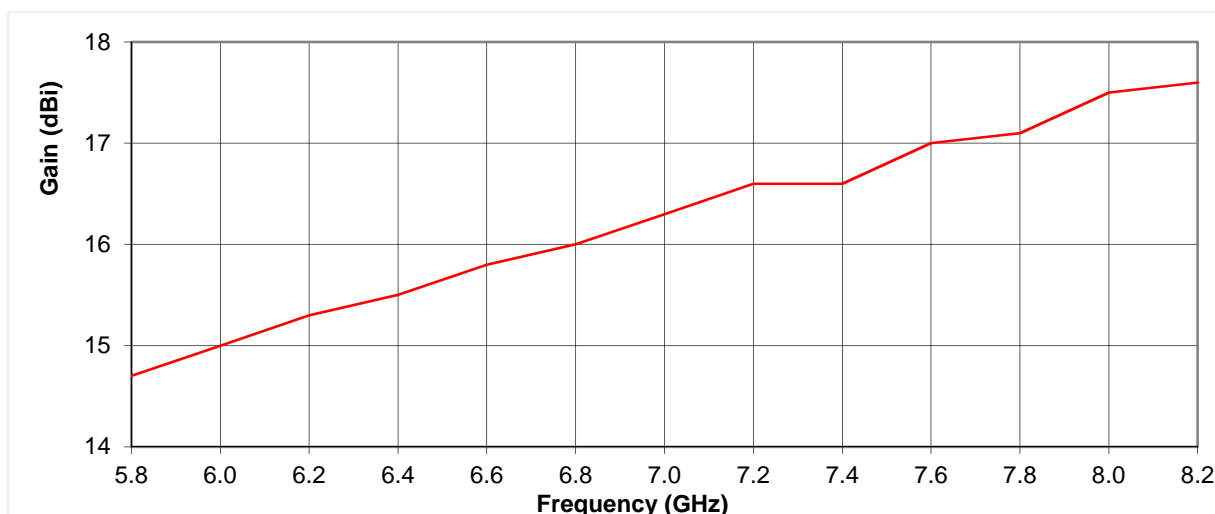


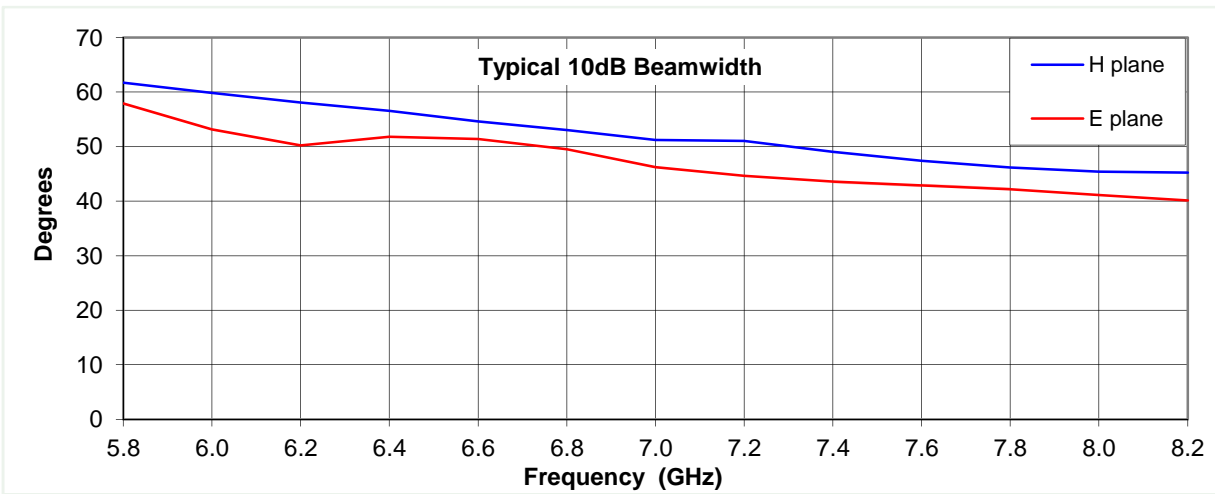
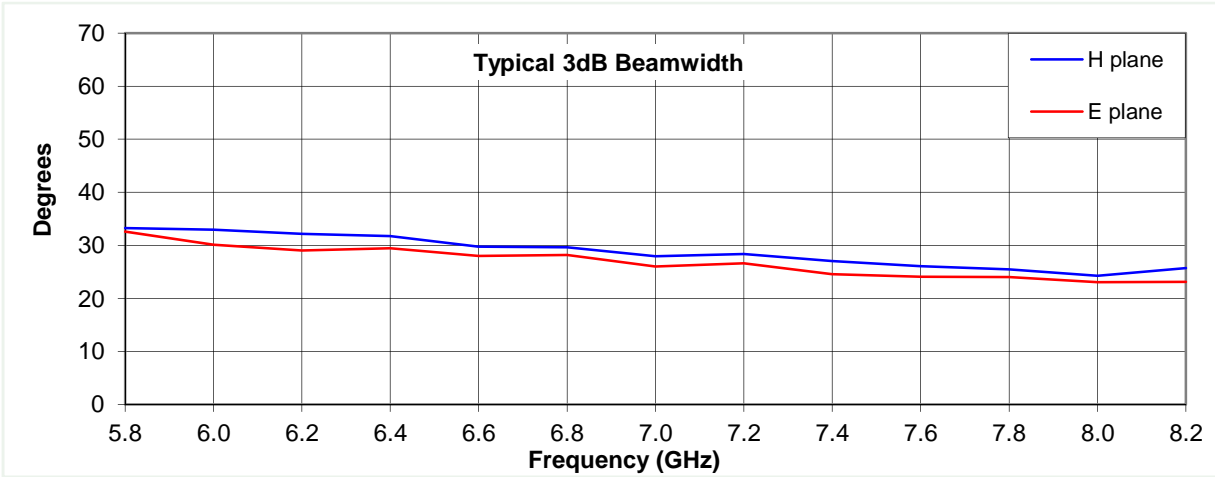
Typical Specification

Frequency	6 to 8 GHz
Connector Type	N type jack
Power Handling	100 Watt c.w.
VSWR	Typically < 1.5 :1
Gain	15 to 17.5 dBi
Antenna Factor	30.8 to 31 dB/m
3dB Beamwidth	23 to 33 degrees
10dB Beamwidth	41 to 60 degrees
Weight	370 g nominal
Maximum Size	107 mm x 85 mm external aperture x 172 mm long
Mounting	Mounting Plate 64 mm x 64 mm with 4 holes, diameter 5 mm, on 50 mm centres
Construction	Welded aluminium. Powdercoat finish.

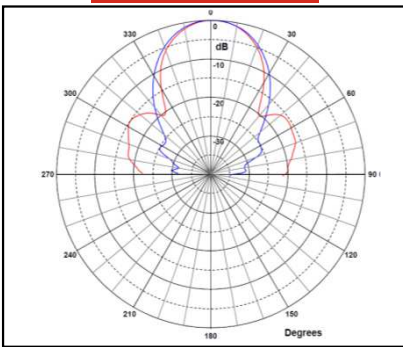
Typical Antenna Gain / Factor

This is calculated by reference to standard gain horn antennas, and cross checked with reference to the antenna beamwidth, with an estimated error of +/- 0.8dB.

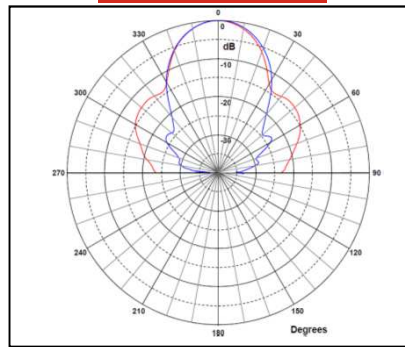




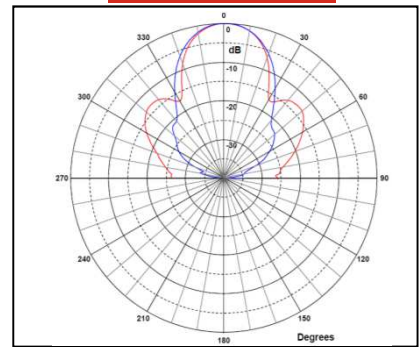
6 GHz



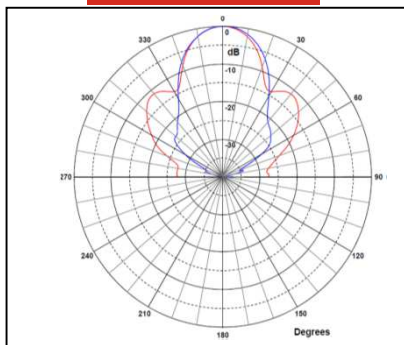
6.6 GHz



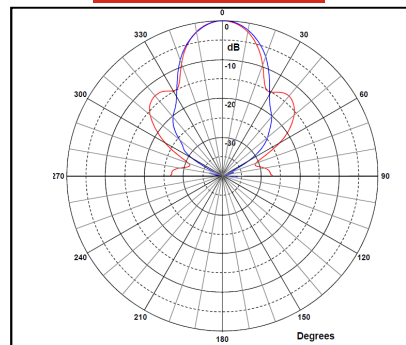
7.2 GHz



7.6 GHz



8 GHz



Red trace = E-plane, Blue trace = H-plane cut

