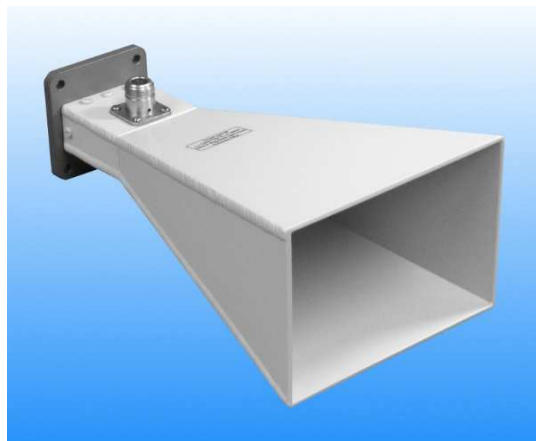


4 - 6 GHz Linearly Polarised 15 dBi Horn Antenna fitted with an N type Connector

Catalogue number **QSH-SL-4-6-N-15**

Q-par reference **QMS-00124**

Contents **Summary**
Typical Gain / Antenna Factor
Typical Beamwidth / Patterns
VSWR

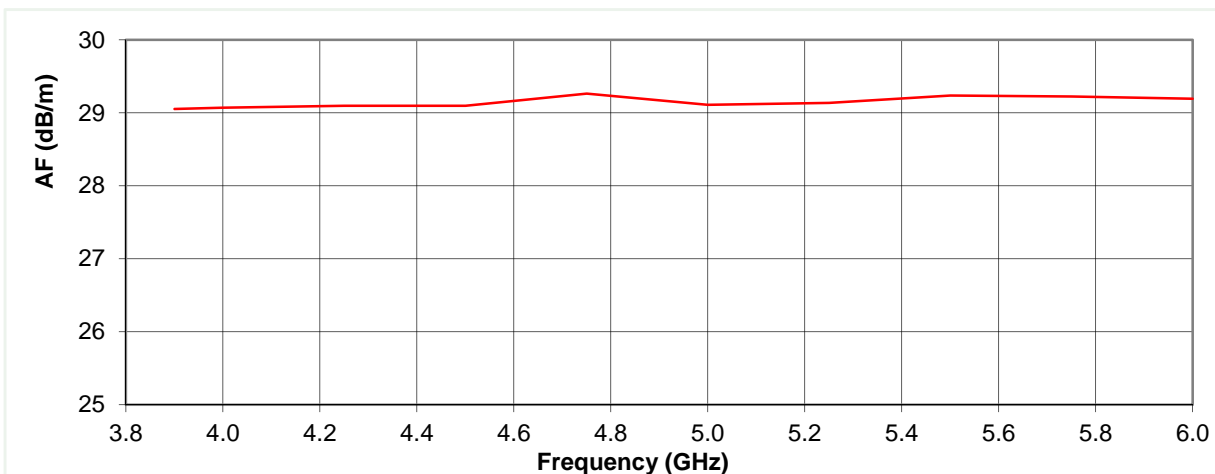
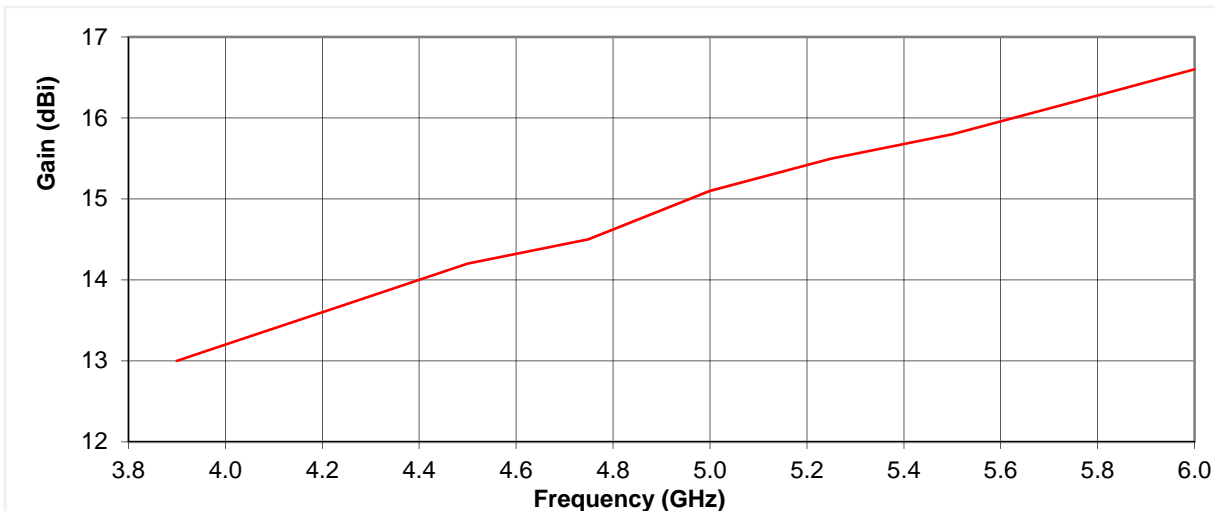


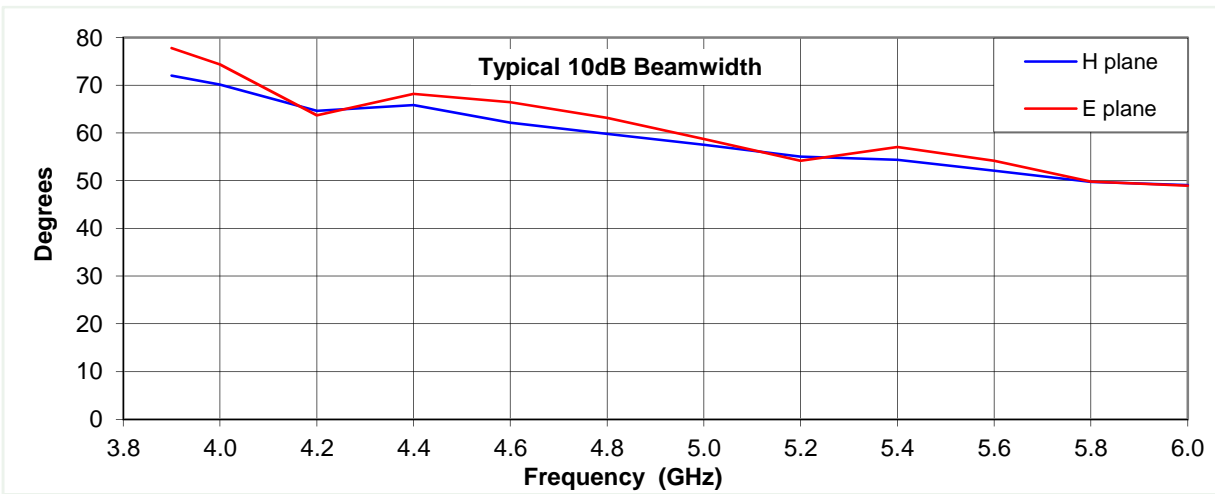
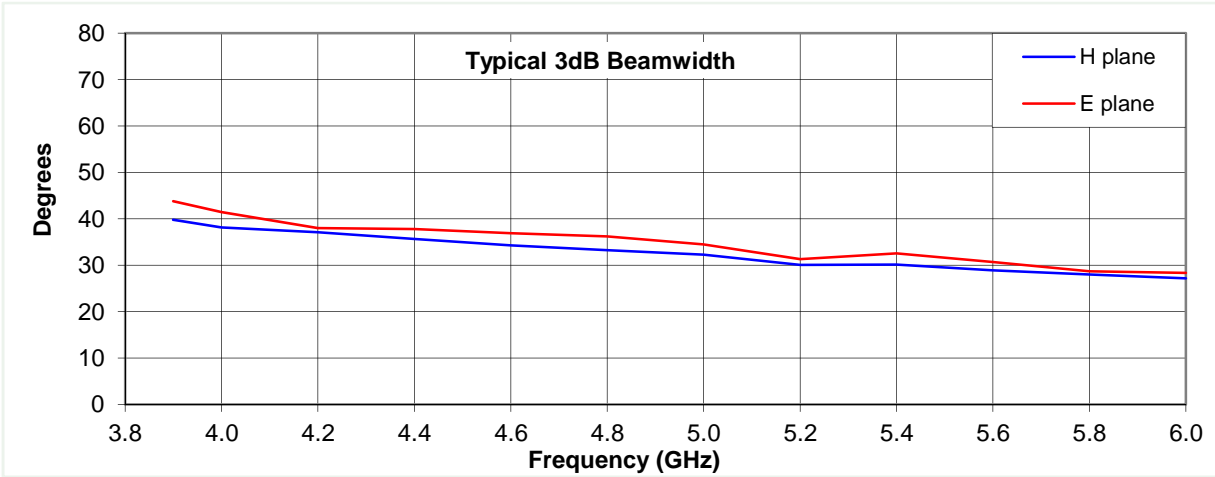
Typical Specification

Frequency	3.9 to 6 GHz
Connector Type	N type jack
Power Handling	200 Watt c.w.
VSWR	Typically < 1.4:1
Gain	13 to 16.6 dBi
Antenna Factor	29.1 to 29.3 dB/m
3dB Beamwidth	27 to 44 degrees
10dB Beamwidth	49 to 78 degrees
Weight	620 g nominal
Maximum Size	136 mm x 94.5 mm external aperture, 236 mm long
Mounting	Rear mounting plate with 4 holes diameter 5.1 mm, 50 mm centres
Construction	Welded aluminium horn, painted. Anodised aluminium mount plate.

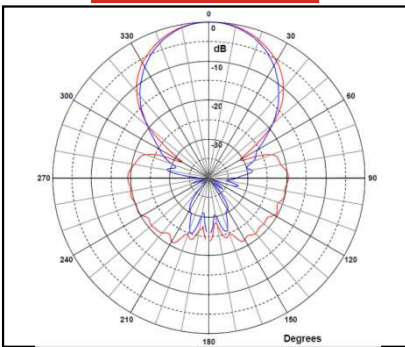
Typical Antenna Gain / Factor

This is calculated by reference to standard gain horn antennas, and cross checked with reference to the antenna beamwidth, with an estimated error of +/- 0.8dB.

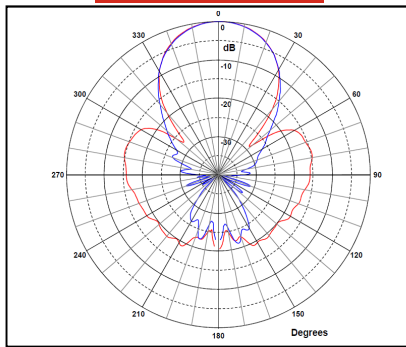




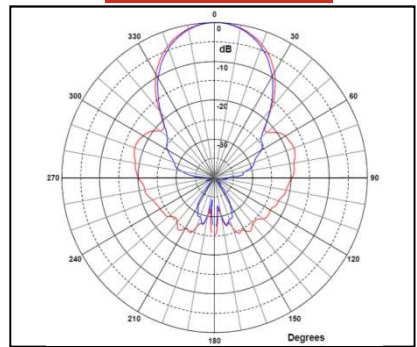
3.9 GHz



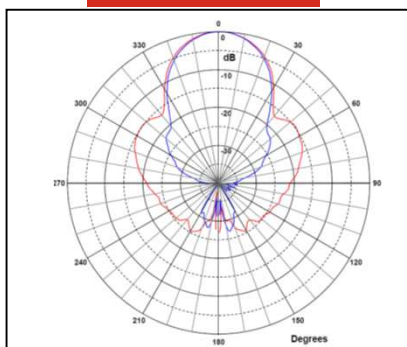
4.2 GHz



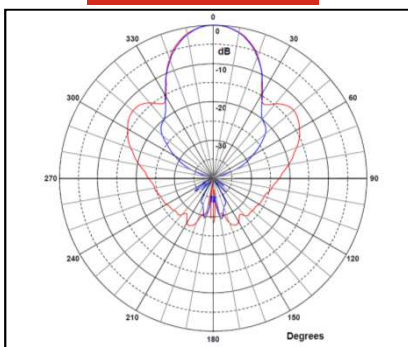
4.8 GHz



5.4 GHz



6 GHz



Red trace = E-plane, Blue trace = H-plane cut

