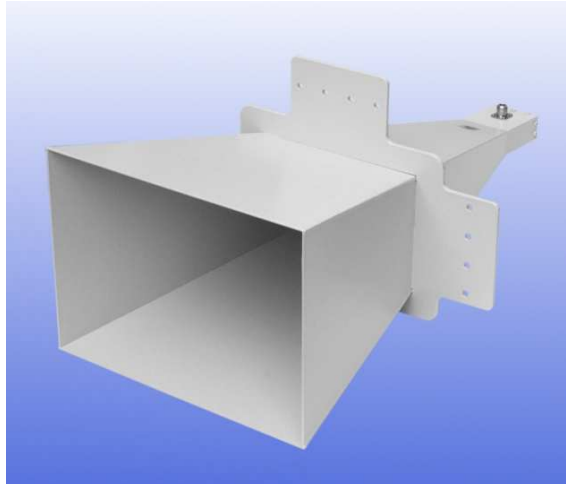


2.6 - 4.0 GHz Linearly Polarised 20 dBi Horn Antenna fitted with an N type Connector

Catalogue number **QSH-SL-2.6-4-N-20**

Q-par reference **QMS-00113**

Contents **Summary**
Typical Gain / Antenna Factor
Typical Beamwidth / Patterns
VSWR

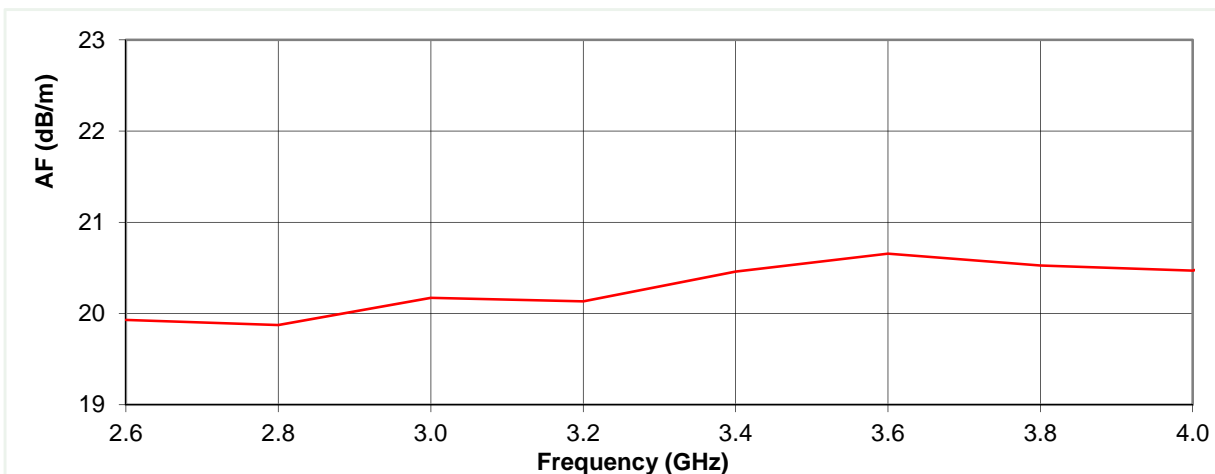
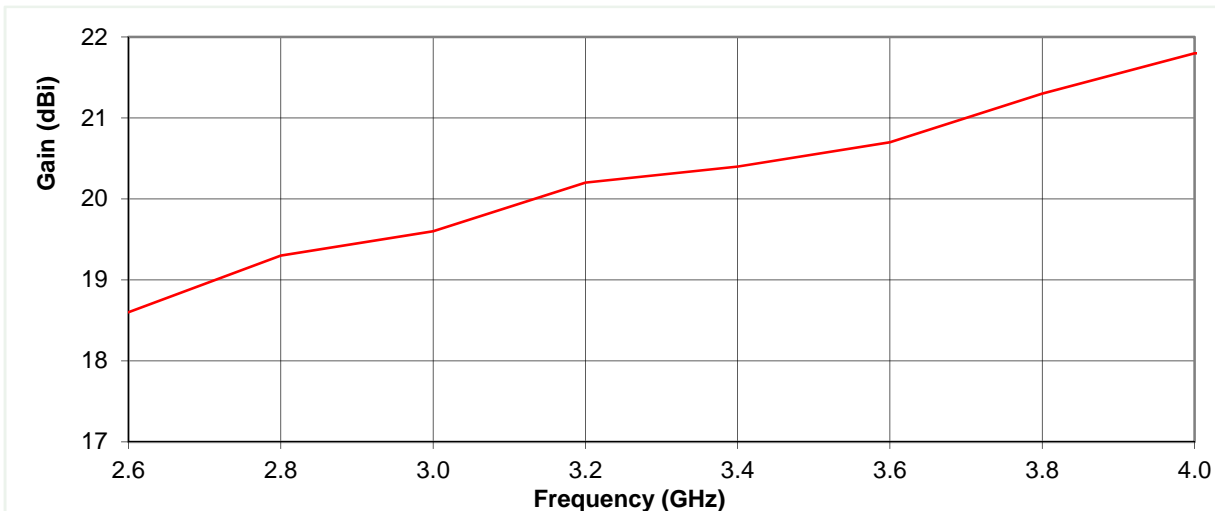


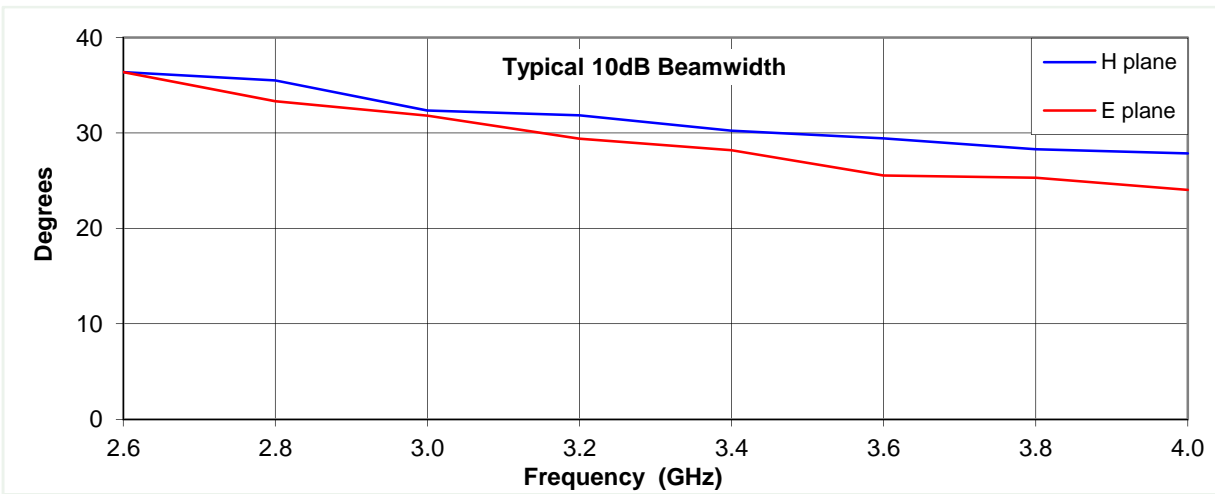
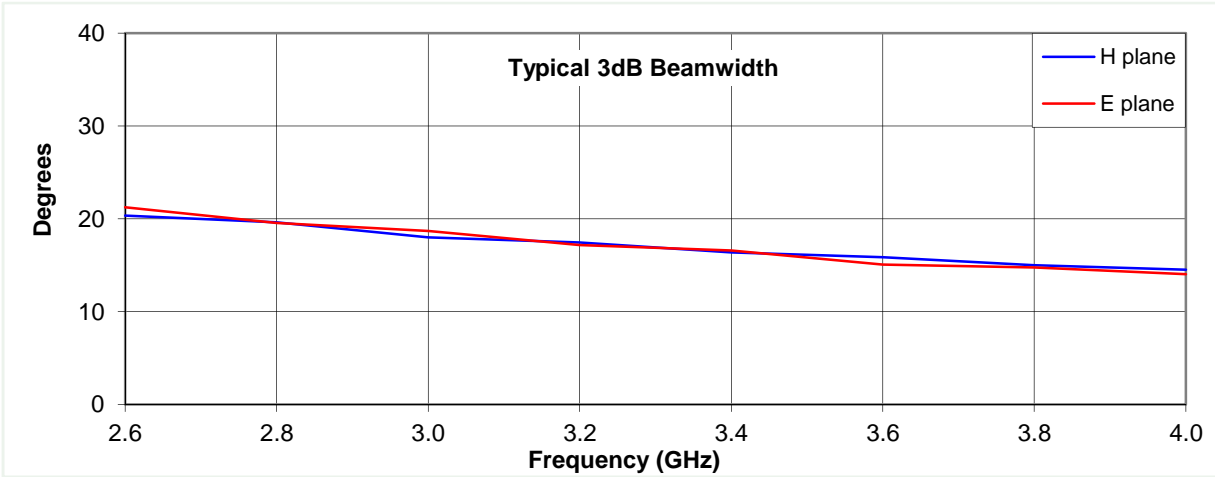
Typical Specification

Frequency	2.6 to 4 GHz
Connector Type	N type jack
Power Handling	200 Watt c.w.
VSWR	< 1.4:1
Gain	18.6 to 21.8 dBi
Antenna Factor	19.9 to 20.9 dB/m
3dB Beamwidth	14 to 21 degrees
10dB Beamwidth	24 to 36 degrees
Weight	5 kg nominal
Maximum Size	393 mm x 280 mm external aperture x 756 mm long
Mounting	Mount plates fitted at centre of gravity on 2 sides, each with 4 holes of diameter 10mm on 40 mm centres.
Construction	Welded aluminium. Powdercoat finish.

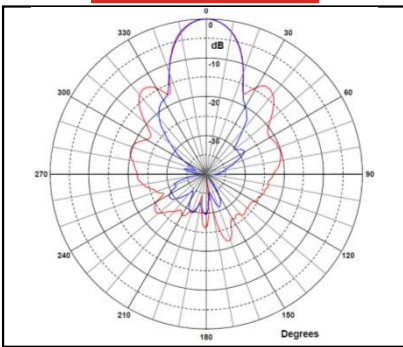
Typical Antenna Gain / Factor

This is calculated by reference to standard gain horn antennas, and cross checked with reference to the antenna beamwidth, with an estimated error of +/- 0.8dB.

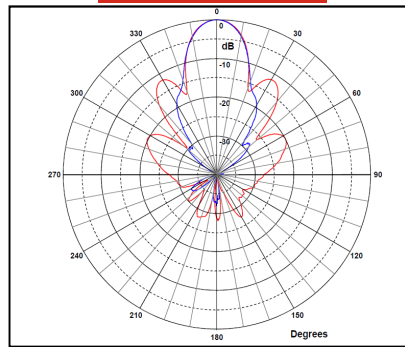




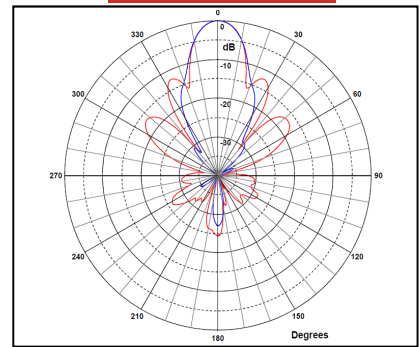
2.6 GHz



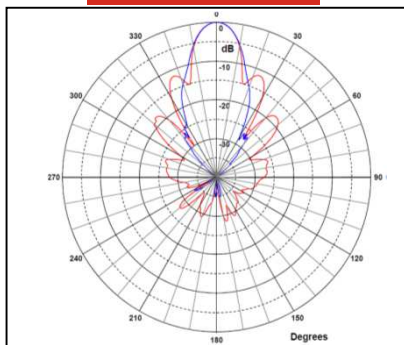
3.0 GHz



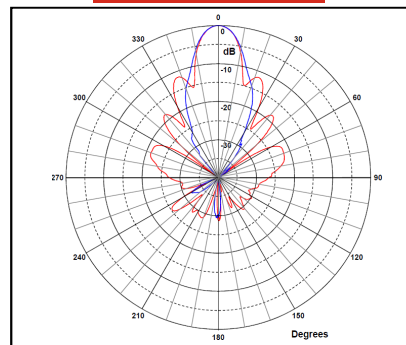
3.4 GHz



3.8 GHz



4 GHz



Red trace = E-plane, Blue trace = H-plane cut

