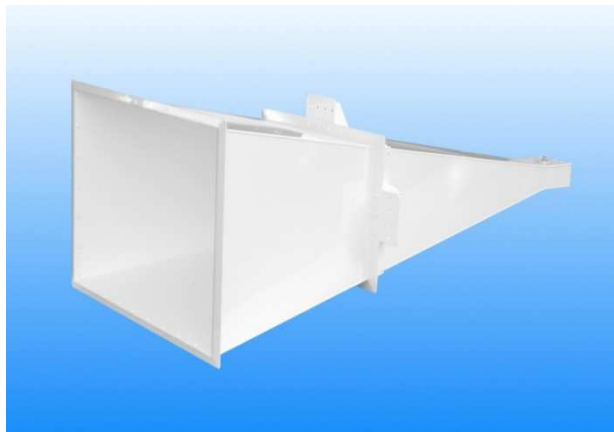


1.1 - 1.7 GHz Linearly Polarised 20 dBi Horn Antenna fitted with a 7/8 IEC / EIA type Connector

Catalogue number **QSH-SL-1.1-1.7-B-20**

Q-par reference **QMS-00081**

Contents **Summary**
Typical Gain / Antenna Factor
Typical Beamwidth / Patterns
VSWR



Typical photograph. Finish according to customer specifications.

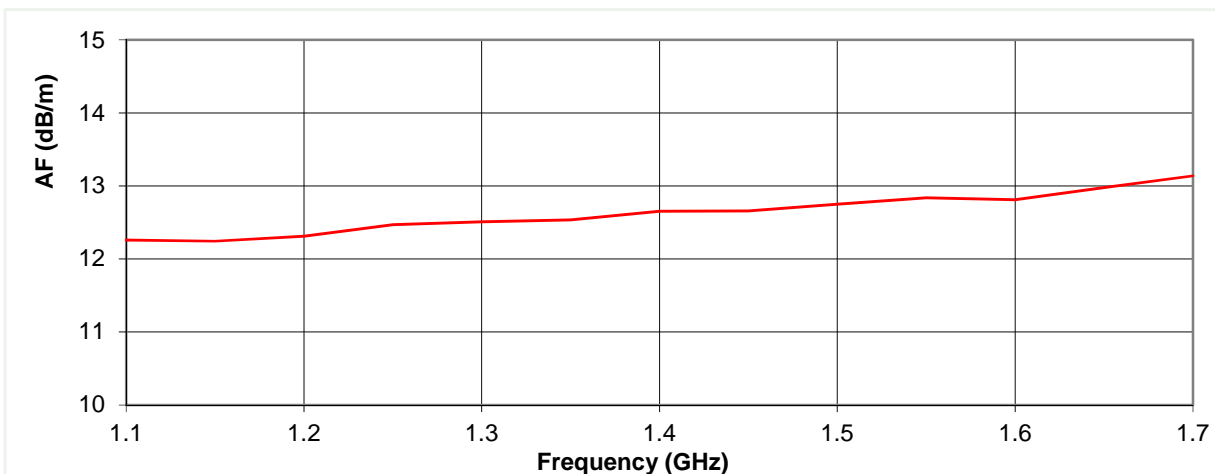
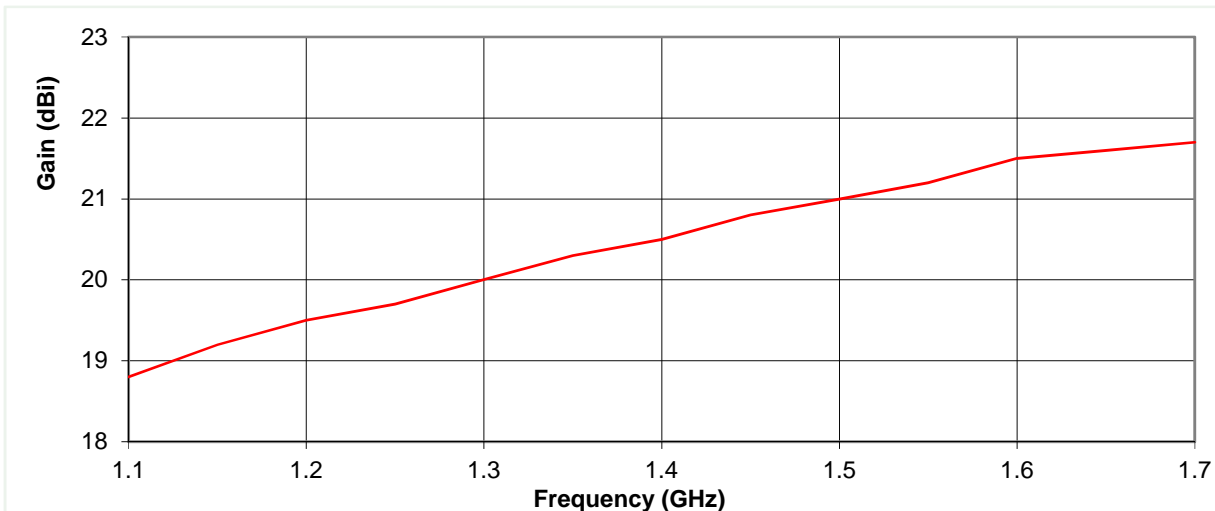


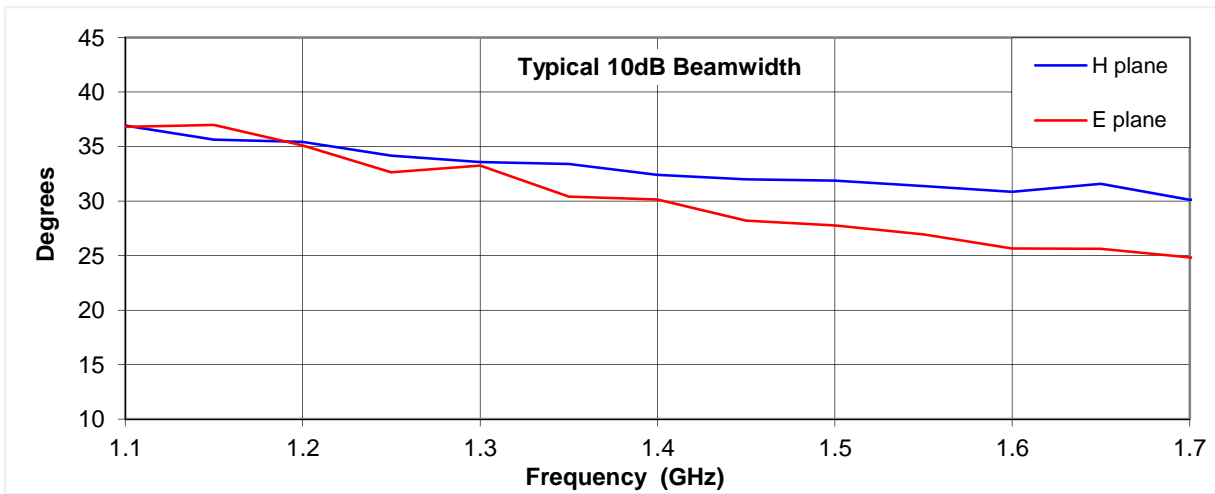
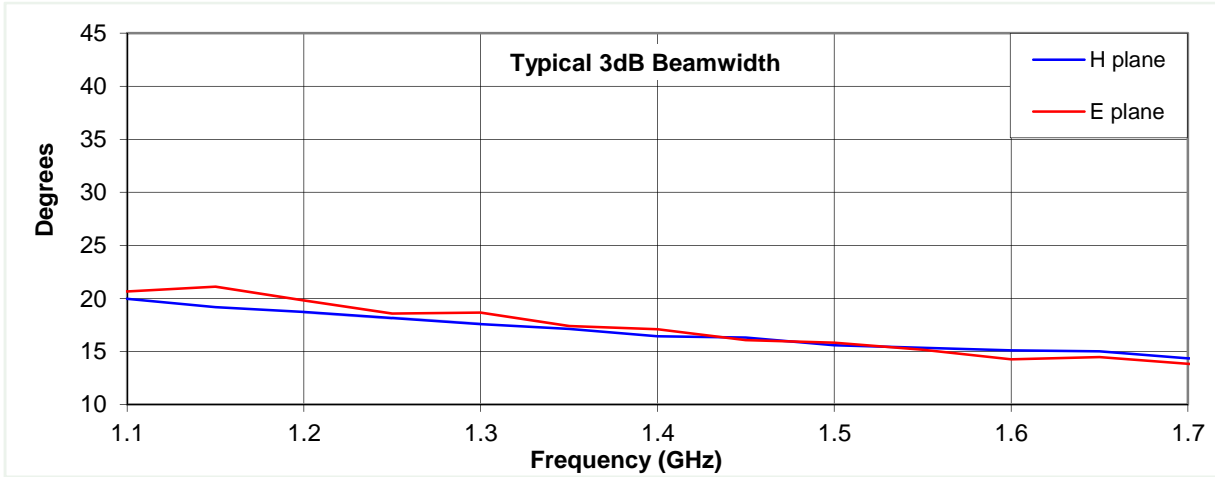
Typical Specification

Frequency	1.1 to 1.7 GHz
Connector Type	7/8 IEC
Power Handling	1400 Watt c.w.
VSWR	< 1.4 :1
Gain	18.8 to 21.7 dBi
Antenna Factor	12.2 to 13.1 dB/m
3dB Beamwidth	14 to 21 degrees
10dB Beamwidth	25 to 40 degrees
Weight	27 kg nominal
Maximum Size	960 mm x 705 mm external aperture x 1800 mm long
Mounting	Mounting bracket on two sides, at centre of gravity. Each having 4 holes, diameter 10 mm, 40 mm centres
Construction	Welded aluminium. Powdercoat finish.

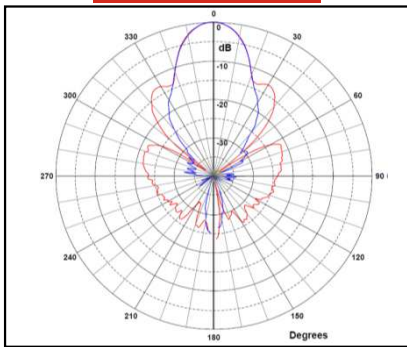
Typical Antenna Gain / Factor

This is calculated by reference to standard gain horn antennas, and cross checked with reference to the antenna beamwidth, with an estimated error of +/- 0.8dB.

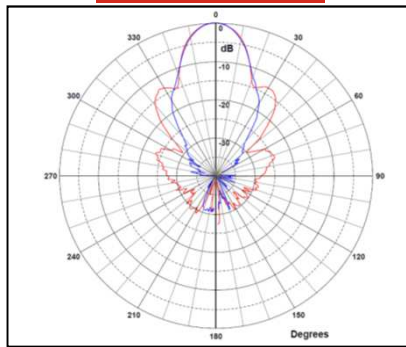




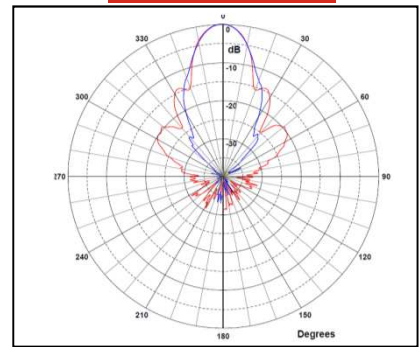
1.1 GHz



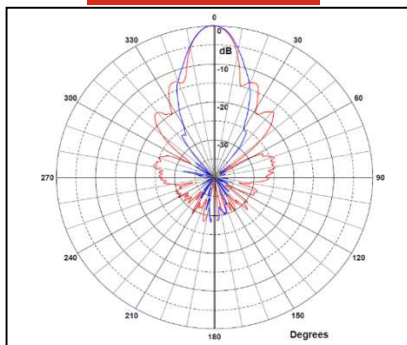
1.2 GHz



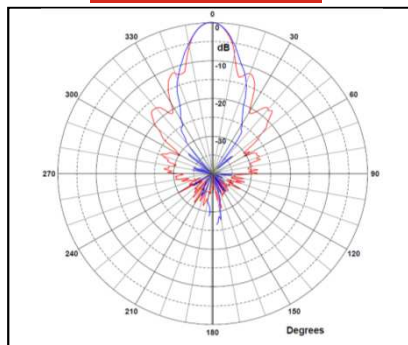
1.4 GHz



1.6 GHz



1.7 GHz



Red trace = E-plane, Blue trace = H-plane cut

