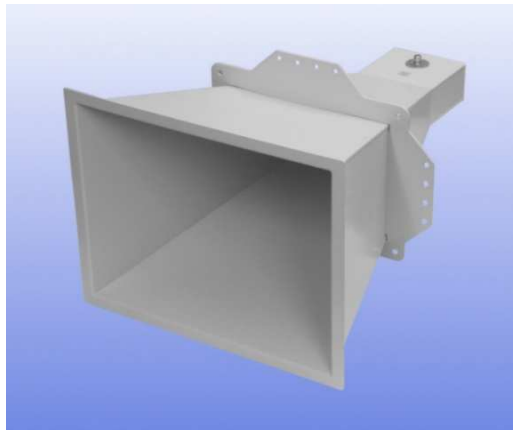


1.1 - 1.7 GHz Linearly Polarised 15 dBi Horn Antenna fitted with an N type Connector

Catalogue number **QSH-SL-1.1-1.7-N-15**

Q-par reference **QMS-00079**

Contents **Summary**
Typical Gain / Antenna Factor
Typical Beamwidth / Patterns
VSWR

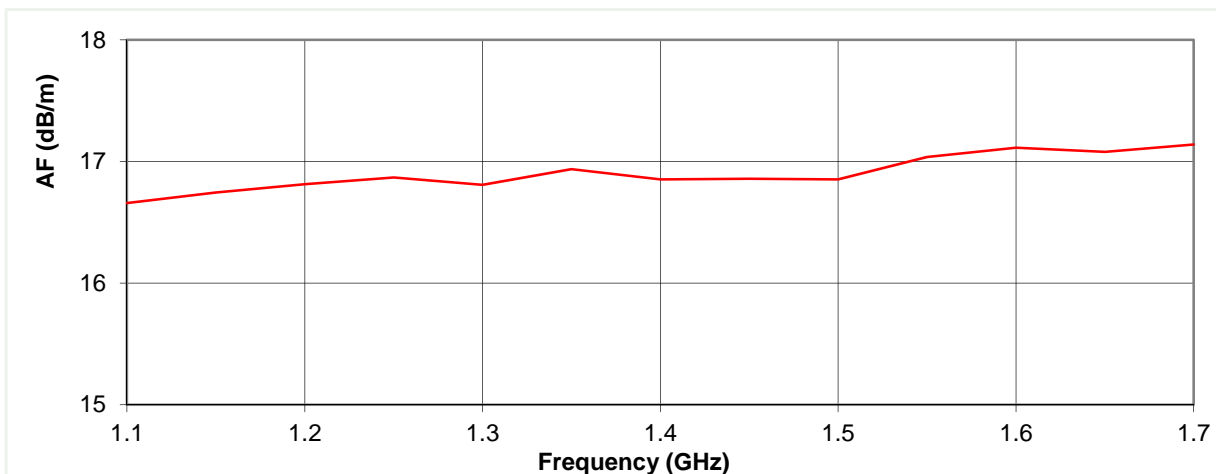
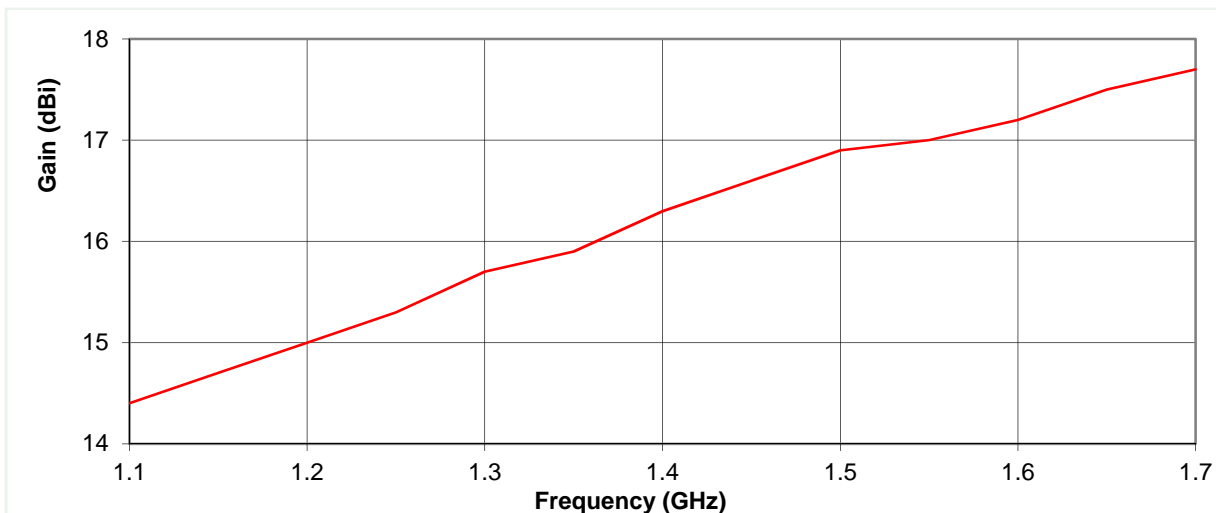


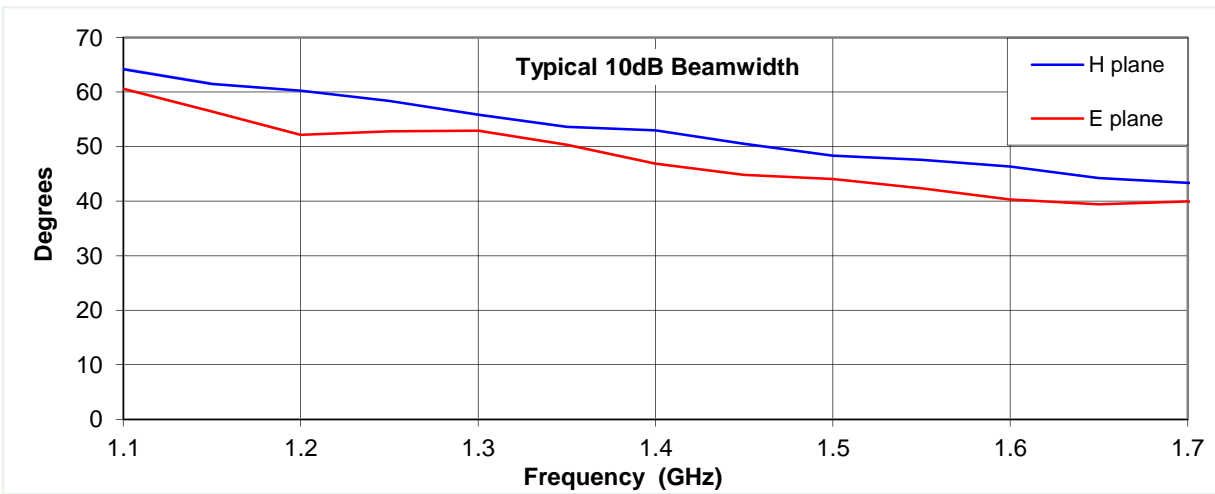
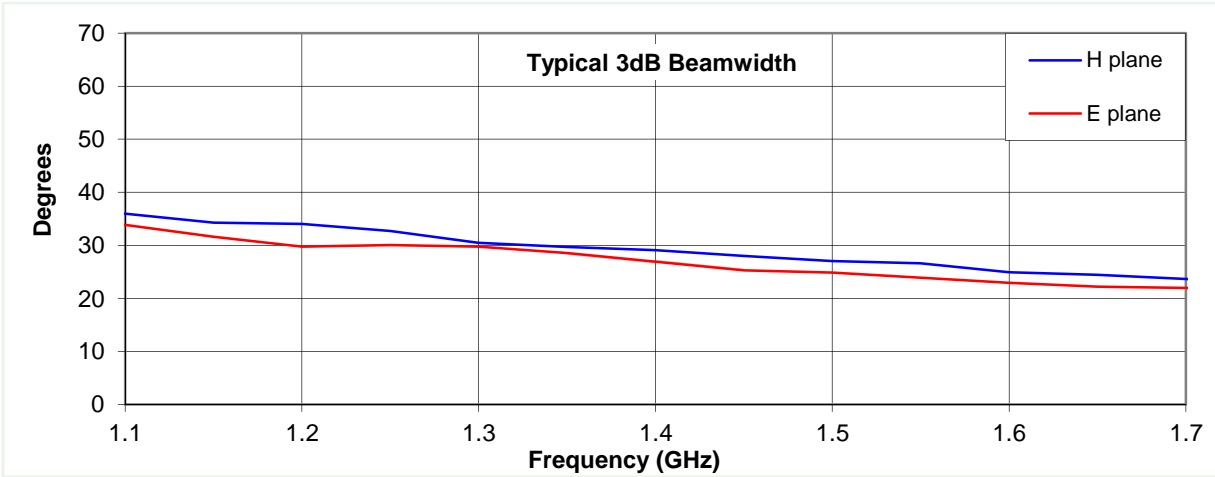
Typical Specification

Frequency	1.1 to 1.7 GHz
Connector Type	N type jack
Power Handling	300 Watt c.w.
VSWR	Typically < 1.4:1
Gain	14.4 to 17.7 dBi
Antenna Factor	14.3 to 17.9 dB/m
3dB Beamwidth	21 to 36 degrees
10dB Beamwidth	38 to 64 degrees
Weight	8.4 kg -nominal
Maximum Size	561 mm x 451 mm external aperture x 840 mm long
Mounting	Mounting Plate on 2 sides, at centre of gravity, each having 4 holes, diameter 10 mm, 40 mm centres
Construction	Welded Aluminium, powdercoat finish.

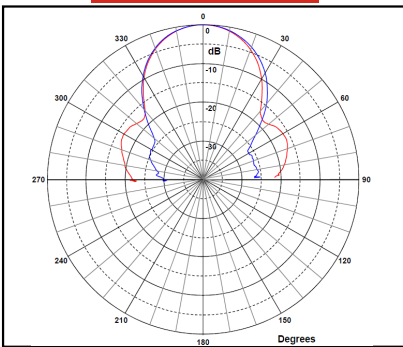
Typical Antenna Gain / Factor

This is calculated by reference to standard gain horn antennas, and cross checked with reference to the antenna beamwidth, with an estimated error of +/- 0.8dB.

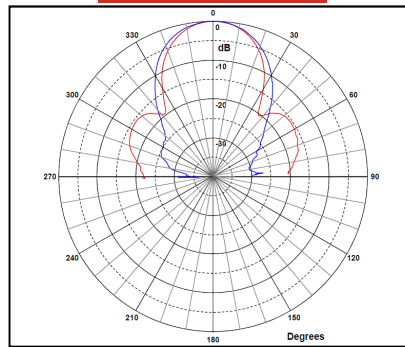




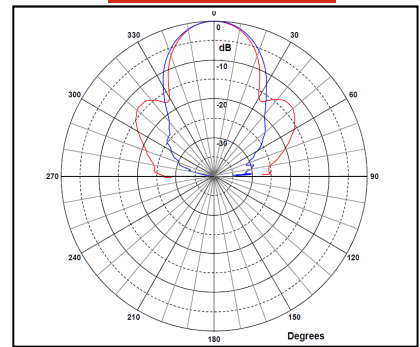
1.1 GHz



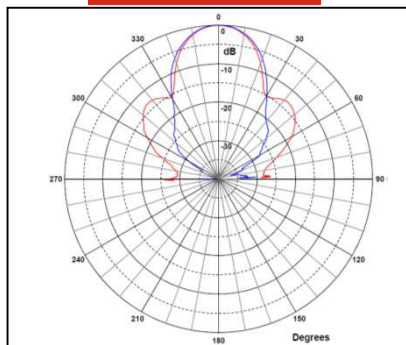
1.2 GHz



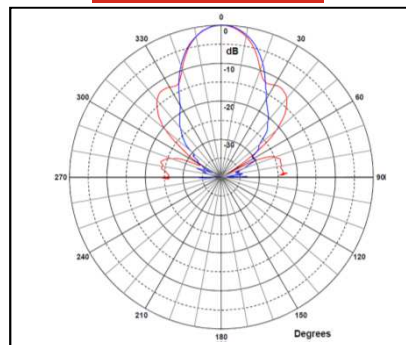
1.4 GHz



1.5 GHz



1.7 GHz



Red trace = E-plane, Blue trace = H-plane cut

