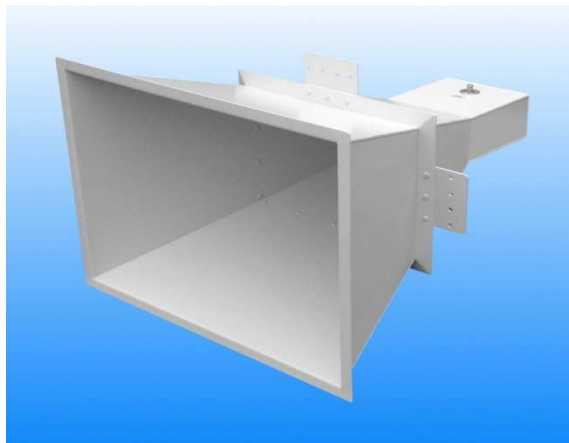


0.75 - 1.1 GHz Linearly Polarised 15 dBi Horn Antenna fitted with an N type Connector

Catalogue number **QSH-SL-0.7-1.1-N-15**

Q-par reference **QMS-00068**

Contents **Summary**
Typical Antenna Gain / Factor
Typical Beamwidth
VSWR



Typical photograph. Finish according to customer specifications.



Typical Specification

Frequency	0.75 to 1.1 GHz
Connector type	N type jack
Power Handling	400 Watt c.w.
VSWR	< 1.6 :1
Gain	13.6 to 17.1 dBi
Antenna Factor	14.1 to 14.4 dB/m
3dB Beamwidth	25 to 38 degrees
10dB Beamwidth	44 to 66 degrees
Weight	13.7 kg nominal
Maximum size	809 mm x 605 mm external aperture x 1050 mm long
Mounting	Mounting brackets fitted on two sides, at centre of gravity. Each having 4 holes, diameter 10 mm, 40 mm centres
Construction	Welded aluminium. Powdercoat finish

Typical Antenna Gain / Factor

This is calculated by reference to standard gain horn antennas, and cross checked with reference to the antenna beamwidth, with an estimated error of +/- 0.8dB.

