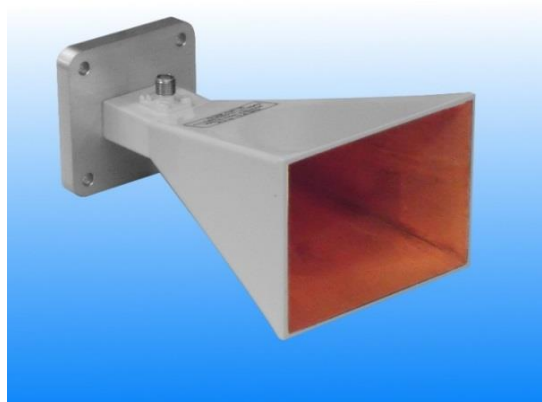


8 - 12 GHz Linearly Polarised 15 dBi Horn Antenna fitted with an SMA type Connector

Catalogue number **QSH-SL-8-12-S-15**

Steatite reference **QMS-00182**

Contents **Summary**
Typical Gain / Antenna Factor
Typical Beamwidth / Patterns

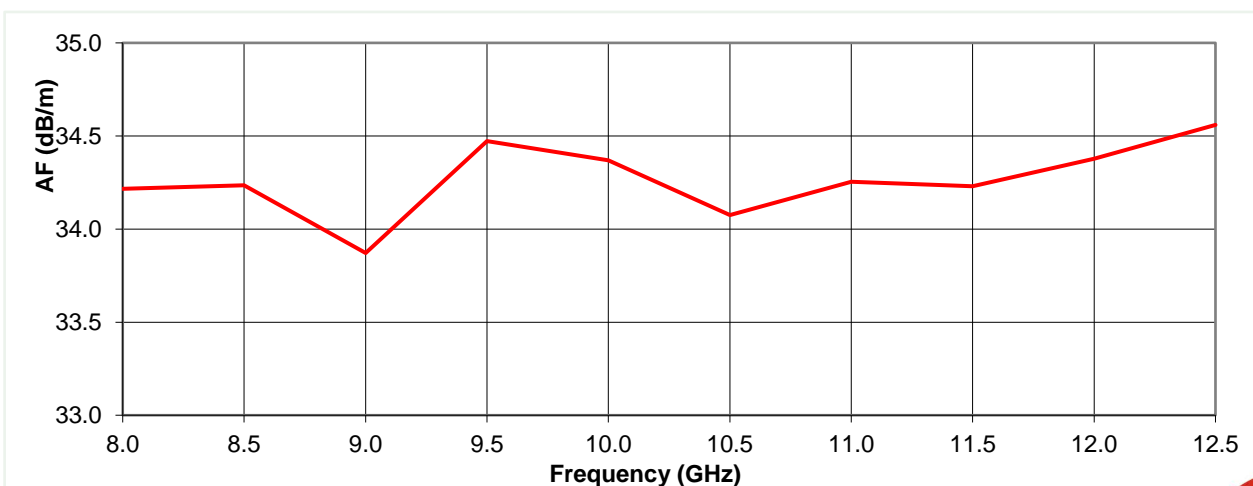
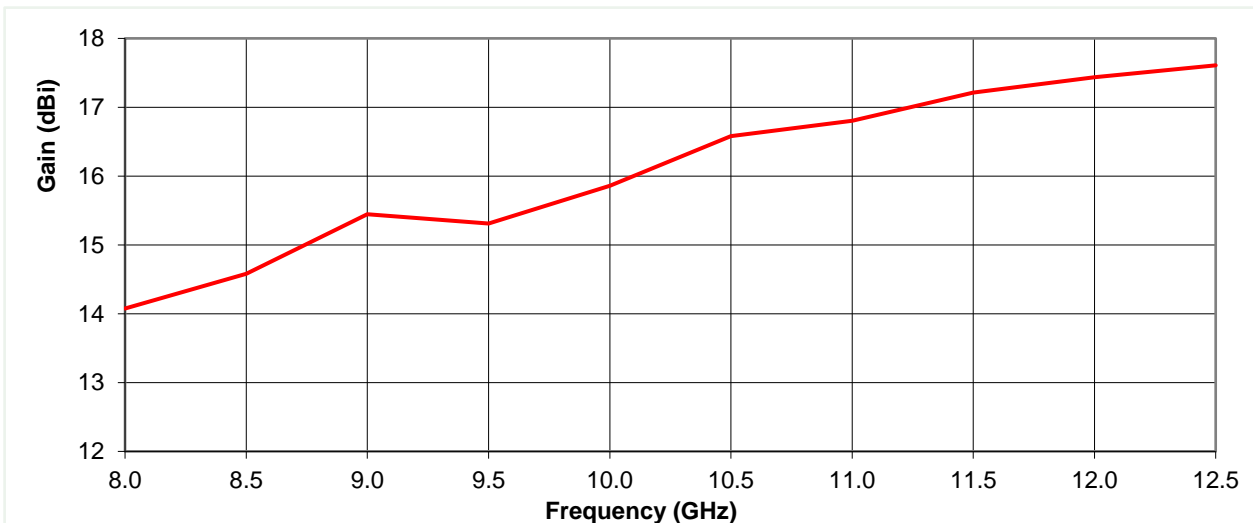


Typical Specification

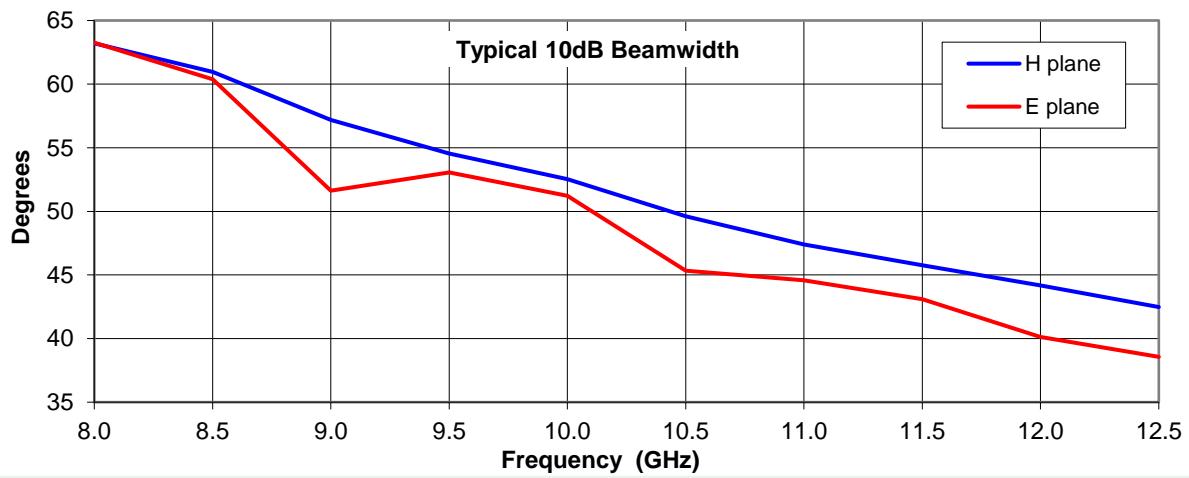
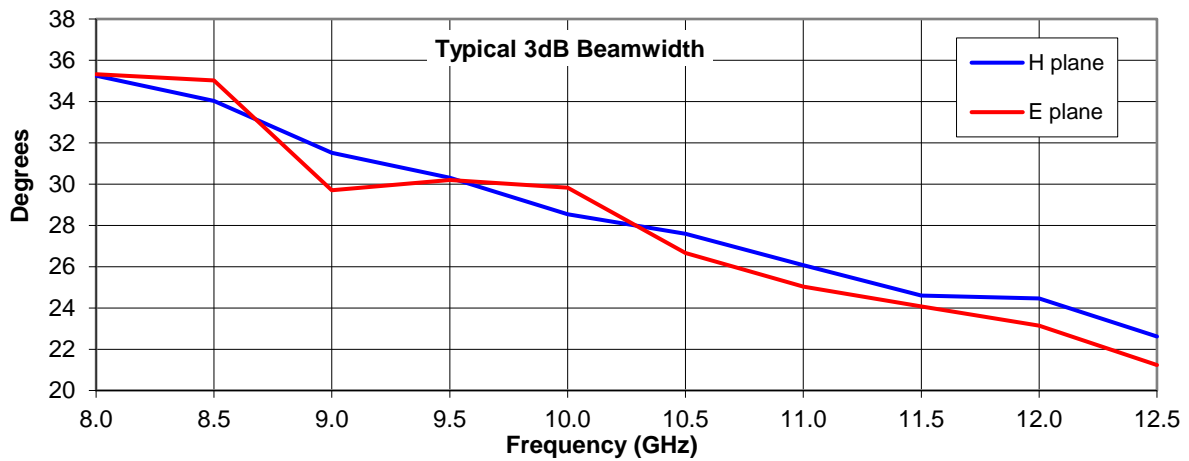
Frequency	8.2 to 12.4 GHz
Connector Type	SMA type jack
Power Handling	40 Watt c.w.
VSWR	Typically < 1.4 :1
Gain	14.1 to 17.6 dBi
Antenna Factor	33.9 to 34.6 dB/m
3dB Beamwidth	21 to 35 degrees
10dB Beamwidth	39 to 63 degrees
Weight	330 g nominal
Maximum Size	74 mm x 57 mm external aperture x 120 mm long
Mounting	Mounting Plate 50 mm x 50 mm with 4 holes, diameter 4.1 mm, on 38 mm centres
Construction	Electroformed copper with anodised aluminium mounting plate, painted.

Typical Antenna Gain / Factor

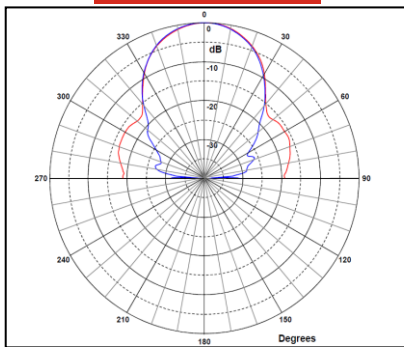
This is calculated by reference to standard gain horn antennas, and cross checked with reference to the antenna beamwidth, with an estimated error of +/- 0.8dB.



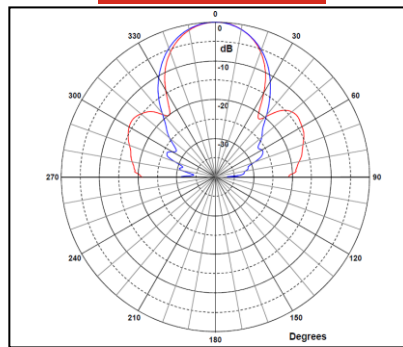
Typical Beamwidth / Radiation Patterns



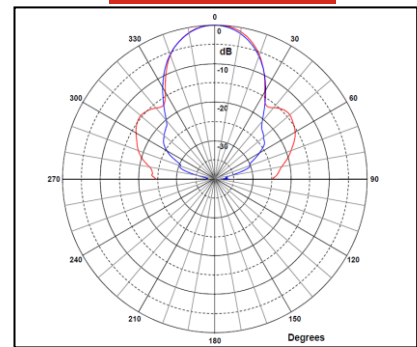
8 GHz



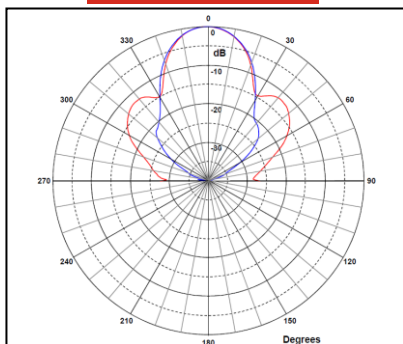
9 GHz



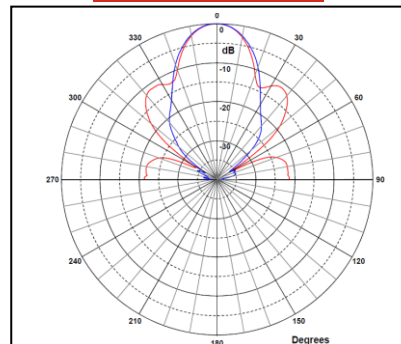
10 GHz



11 GHz



12.5 GHz



Red trace = E-plane, Blue trace = H-plane cut

