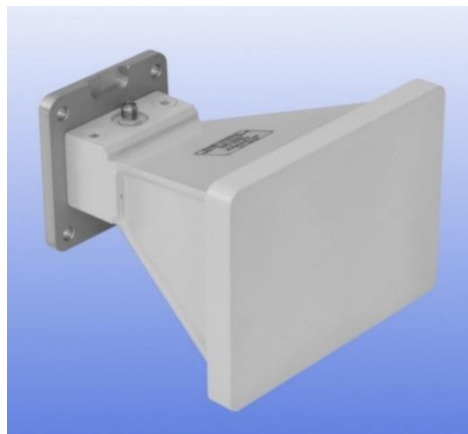


2 - 18 GHz Linearly Polarised Wideband Ridged Horn Antenna fitted with an SMA type Connector and Radome

Catalogue number **QWH-SL-2-18-S-SG-R**

Q-par reference **QMS-00001**

Contents **Summary**
Typical Gain / Antenna Factor
Typical Beamwidth / Patterns

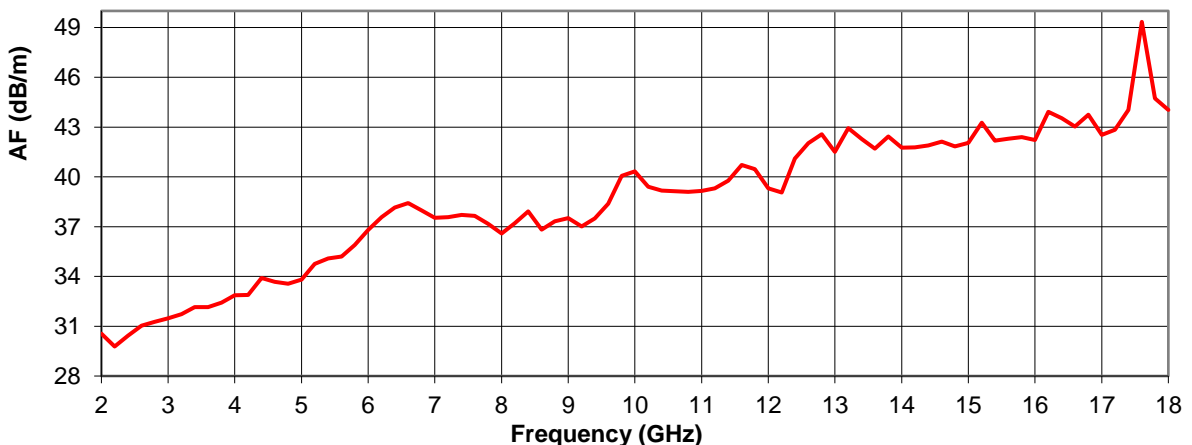
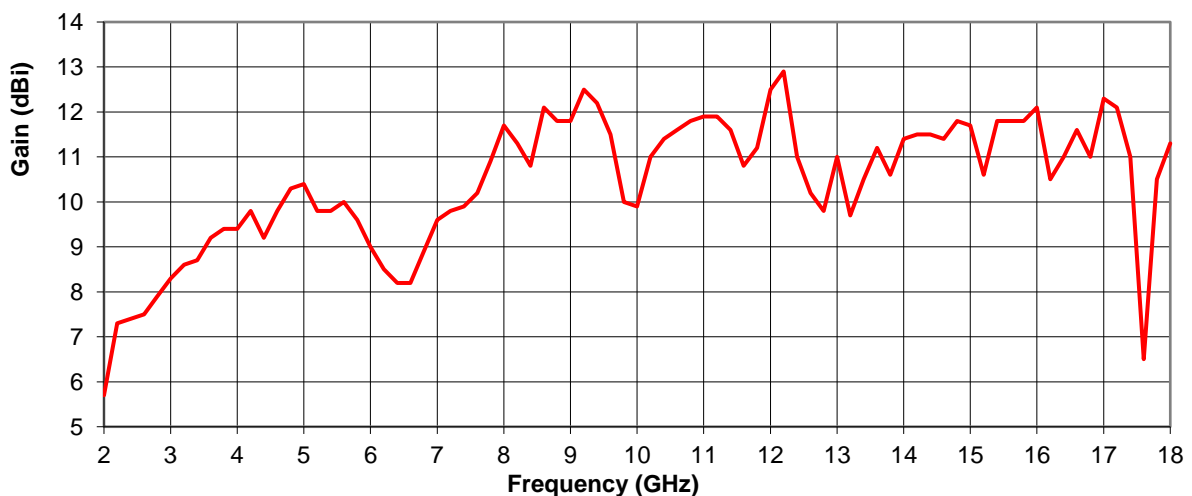


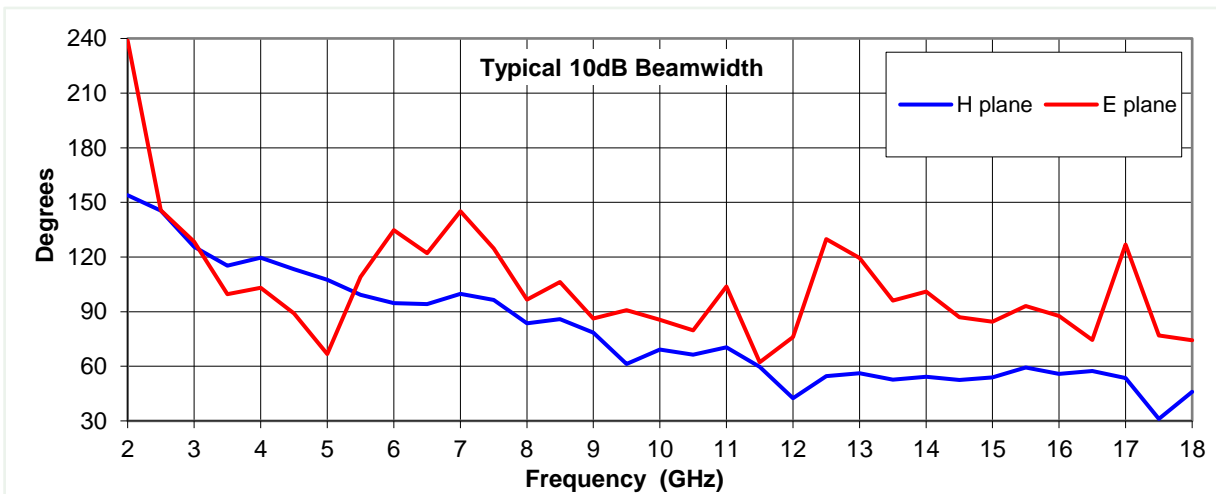
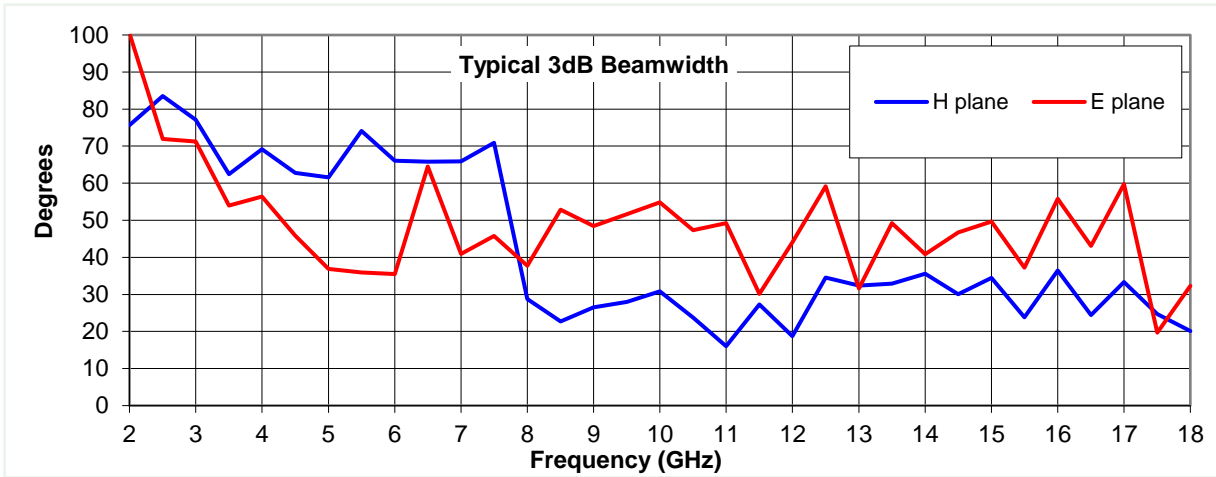
Typical Specification

Frequency	2 to 18 GHz
Connector Type	SMA type jack
Power Handling	20 Watt c.w.
VSWR	< 2.5:1 (-7.4 dB return loss)
Gain	5.7 to 12.9 dBi
Antenna Factor	29.8 to 49.3 dB/m
3dB Beamwidth	16 to 100 degrees
10dB Beamwidth	31 to 239 degrees
Weight	370 g
Maximum Size	118 mm x 85 mm x 118 mm long
Mounting	Rear mount plate, 4 holes 5.1 mm diameter, 50 mm centres
Construction	Aluminium and engineering plastics with anodised aluminium mounting plate

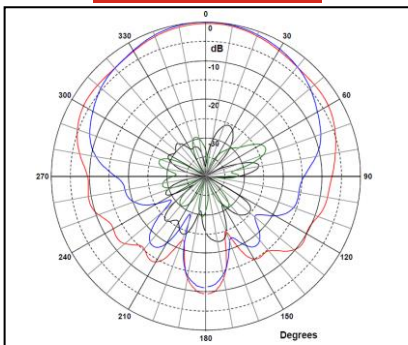
Typical Antenna Gain / Factor

This is calculated by reference to standard gain horn antennas, and cross checked with reference to the antenna beamwidth, with an estimated error of +/- 0.8dB.

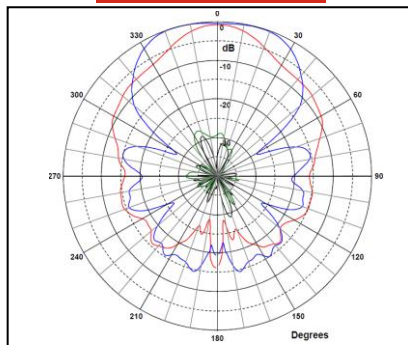




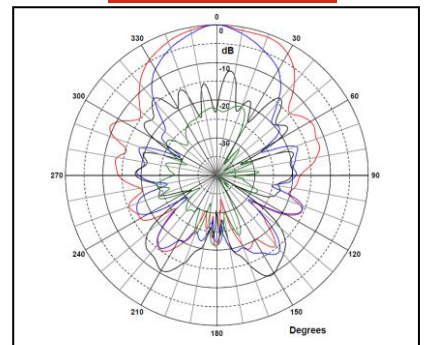
2 GHz



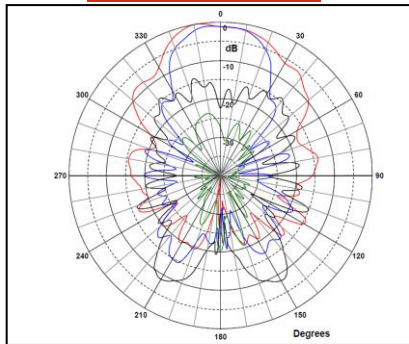
6 GHz



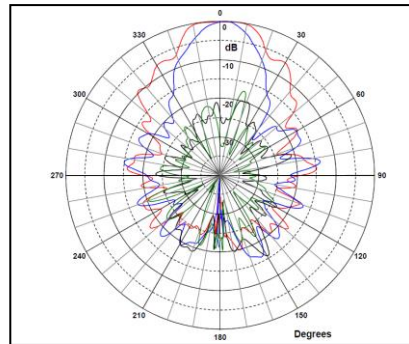
10 GHz



14 GHz



18 GHz



Red trace = E-plane, Blue trace = H-plane cut
 Black = E plane cross polar, Green = H plane cross polar